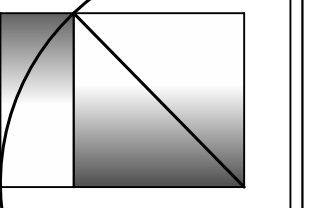


WHIPPLE
CALLENDER
ARCHITECTS

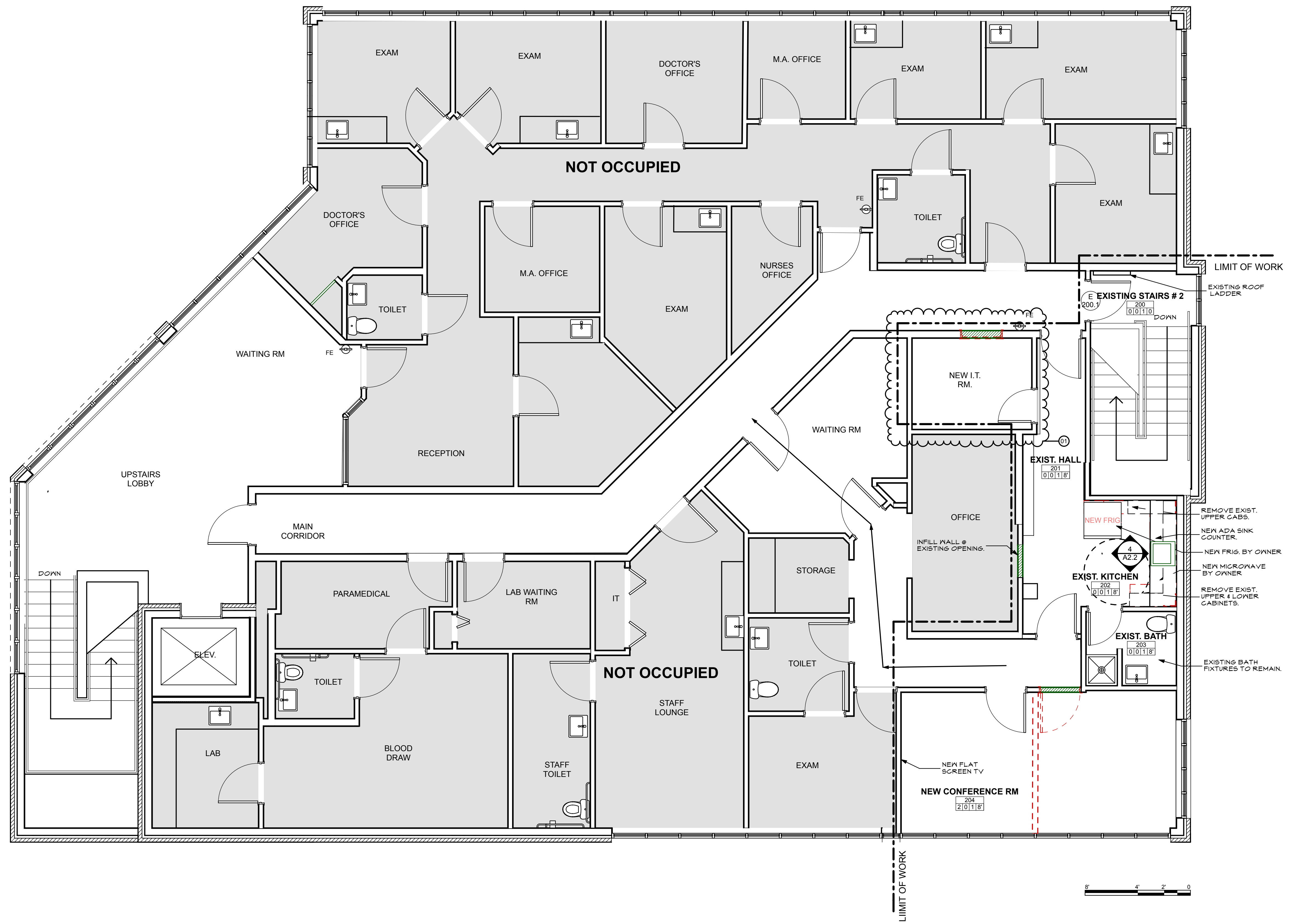


136 PLEASANT AVE.
PORTLAND, ME 04103
P 207.775.2696
F 207.775.3631
www.whipplecallender.com

MARK	DESCRIPTION	DATE
	ISSUED FOR STATE FIRE PERMIT	2-28-2017
	ISSUED FOR PERMIT W/ SURVEY	3-4-2017
01	REVISION #1	4-5-2017
02	REVISION #2	4-12-2017

DATE: 4/13/17
CHECKED BY: AEC
DRAWN BY: CLL
JOB: NEF
SHEET TITLE: SECOND FLOOR PLAN & DEMO PLAN

A1.2



LEGEND:

WALL TYPE 1 TYPICAL
SEE SHEET NO. A4.1

NEW WALL

DIMENSION TO THE FACE OF STUD UNLESS OTHERWISE NOTED

EXISTING WALL TO REMAIN

EXISTING CONSTRUCTION TO BE REMOVED

DOOR & FRAME SCHEDULE
SEE SHEET A4.1

INTERIOR ELEVATIONS

REVISED 4-13-17
ISSUED FOR PERMIT
MARCH 6, 2017

1
A1.2
SECOND FLOOR PLAN WITH DEMO
SCALE: 1/4" = 1'-0"

- GENERAL NOTES:**
1. VERIFY ALL DIMENSIONS IN THE FIELD. REPORT ALL DISCREPANCIES TO ARCHITECT PRIOR TO COMMENCEMENT WITH WORK.
 2. NOTED DIMENSIONS TAKE PRECEDENT OVER SCALED DIMENSIONS. LARGE DETAILS TAKE PRECEDENT OVER SMALL SCALED DETAILS.
 3. ALL NEW CONSTRUCTION DIMENSIONS ARE ROUGH OPENINGS UNLESS NOTED OTHERWISE. DIMENSIONS TO EXISTING WALL CONSTRUCTION ARE TO FINISH SURFACE.
 4. PROVIDE SOLID BLOCKING FOR ALL CABINETS AND ACCESSORIES. REVIEW INTERIOR ELEVATIONS AND DETAILS FOR LOCATIONS.

GENERAL LEGEND

ROOM NAME	CEILING HEIGHT	WALL MATERIAL #	BASEBOARD MATERIAL #	FLOORING MATERIAL #
RM. #				

ROOM FINISH LEGEND

FLOORING MATERIAL FIRST NO. OF 4	BASEBOARD MATERIAL SECOND NO. OF 4	WALL FINISH THIRD NO. OF 4
0 NO CHANGE	0 NO CHANGE	0 NO CHANGE
1 V.C.T.	1 4" VINYL	1 PAINT
2 CARPET		

THIS DRAWING IS AN INSTRUMENT OF SERVICE AND SHALL REMAIN THE PROPERTY OF WHIPPLE CALLENDER ARCHITECTS. IT SHALL NOT BE USED FOR ANY OTHER PURPOSE THAT FOR WHICH IT IS SPECIFICALLY FURNISHED.