

FINISH PLAN - DEMOLITION
SCALE: 3/16" = 1'-0"

KEY NOTES

- 120 REMOVE EXISTING FLOOR FINISH IN AREA DEFINED BY HATCH PATTERN. PATCH / PREPARE FLOOR TO RECEIVE NEW FLOOR FINISH.
- 311 PATCH FLOOR FINISH TO MATCH EXISTING. VERIFY WITH OWNER & ARCHITECT PRIOR TO ORDERING.

GENERAL NOTES

- A. REPAIR EXISTING SURFACES TO REMAIN AS REQUIRED FOR APPLICATION OF NEW FINISHES.
- B. WHERE EXISTING ACCESS PANELS CONFLICT WITH CONSTRUCTION, RELOCATE PANELS TO ALIGN WITH AND FIT WITHIN NEW CONSTRUCTION.
- C. CONTRACTOR SHALL PROVIDE BLOCKING FOR ALL EQUIPMENT, FIXTURES, MILLWORK & ACCESSORIES MOUNTED ON WALL.
- D. CONTRACTOR SHALL PROVIDE COLOR SAMPLES FOR ALL FINISHES & P-LAM TO OWNER & ARCHITECT PRIOR TO ORDERING AND INSTALLATION.
- E. ADJUST OPENING FORCE OF ALL INTERIOR DOOR CLOSERS TO A MAXIMUM OF 5 LBF.
- F. DO NOT SCALE DRAWINGS. WRITTEN DIMENSIONS GOVERN. IN CASE OF CONFLICT, CONSULT THE ARCHITECT.
- G. PARTITIONS ARE DIMENSIONED FROM FINISH FACE TO FINISH FACE UNLESS OTHERWISE NOTED. MAINTAIN DIMENSIONS MARKED AS "CLEAR". ALLOW FOR THICKNESS OF FINISHES.
- H. IF EXISTING DOORS TO REMAIN DO NOT ALLOW FOR SPECIFIED HARDWARE, G.C. TO PROVIDE NEW DOOR.
- I. G.C. SHALL PROVIDE ALL WORK RELATED TO ENGINEERING TO INCLUDE, BUT NOT LIMITED TO: MECHANICAL, ELECTRICAL, FIRE PROTECTION & LIFE SAFETY. G.C. SHALL PROVIDE DESIGN DRAWINGS, PERMITS & INSTALLATION OF SYSTEMS ON A DESIGN BUILD BASIS.
- J. RELOCATE EXISTING FIXTURES ON WALLS TO BE REMOVED TO NEW PARTITION. REFER TO SHEET A00-40 FOR TYPICAL MOUNTING HEIGHTS.
- K. RE-KEY NEW LOCKSETS TO MATCH EXISTING KEY WAY OR KEYS SEPARATELY AS PER MANAGER/CBRE DIRECTION AND USE OWNER'S DOOR HARDWARE VENDOR.
- L. PROVIDE SUBMITTALS FOR MILLWORK, DOOR HARDWARE, AND TOILET ACCESSORIES.

Issue #	Issue Date	Issue Description
1	08/15/2014	ISSUE FOR BID AND PERMIT

Seal/Signature _____

Project Name
ADA UPGRADES

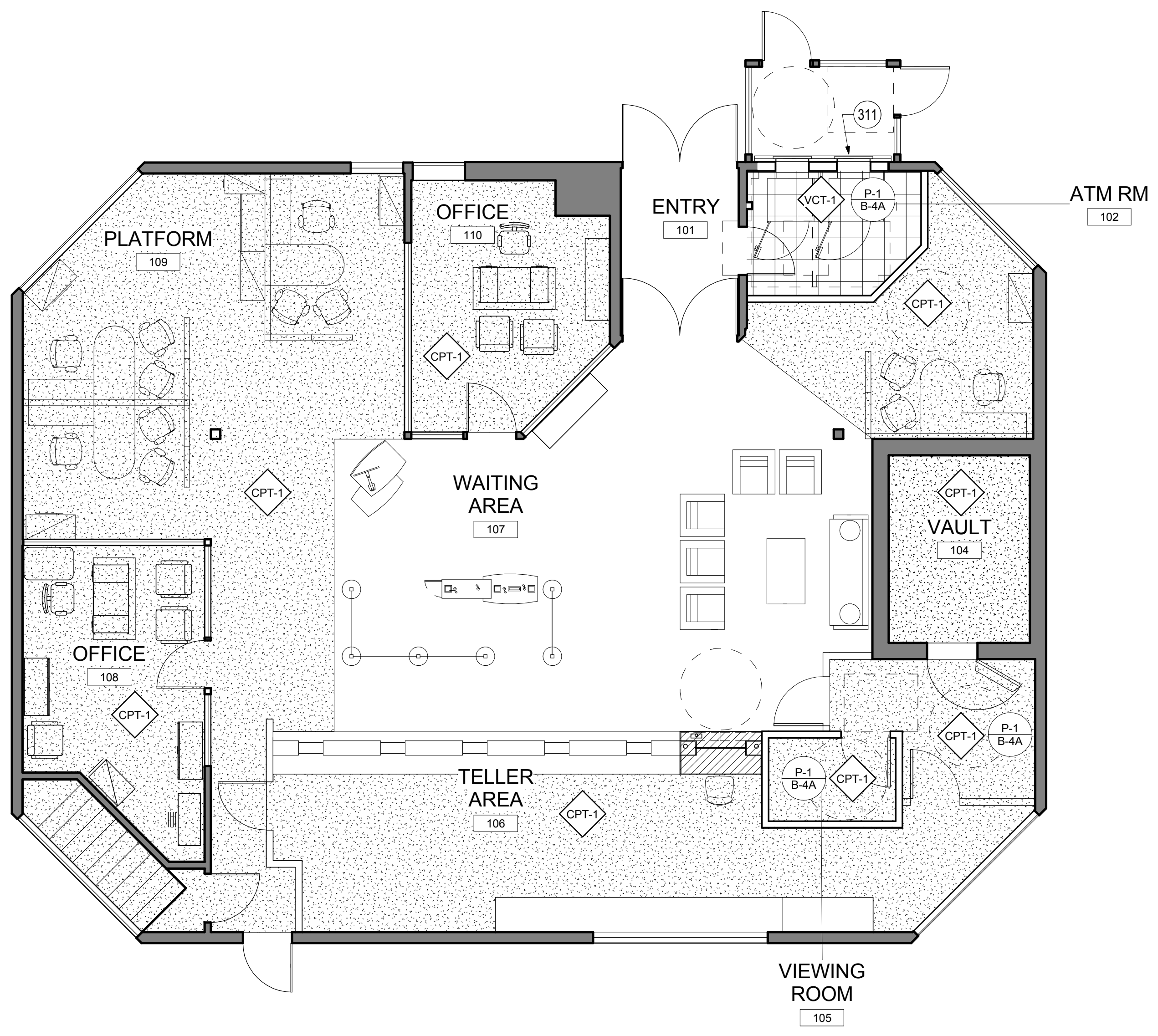
Project Number
11.6560.125

Description
FINISH PLAN

Scale
As indicated

A05.01

© 2014 Gensler



CODE	DESCRIPTION
CPT-1	MANUFACTURER: TANDUS GROUP PRODUCT NAME: BAC 6 ROLL RS WITH POWERBOND BACKING STYLE: VISUAL TENSION SIZE: 7' WIDE LOCATION: SAFE DEPOSIT / VAULT
B-4A	MANUFACTURER: JOHNSONITE FLEXIBLE WALL BASE PRODUCT NAME: RUBBER BASE COLOR: 88 WHITE SAND SIZE: 4" H (STRAIGHT BASE AT CARPET, COVE BASE AT RESILIENT FLOORING) LOCATION: SAFE DEPOSIT VIEWING ROOM, VAULT LOBBY
P-1	MANUFACTURER: BENJAMIN MOORE PRODUCT NAME: OC-22 COLOR: COTTON BALLS FINISH: ECO SPEC WB INTERIOR LATEX EGGSHELL ENAMEL LOCATION: GENERAL
P-2	MANUFACTURER: BENJAMIN MOORE PRODUCT NAME: OC-122 COLOR: COTTON BALLS FINISH: SEMI-GLOSS FINISH LOCATION: GENERAL - DOORS AND DOOR FRAMES
VCT-1	MANUFACTURER: MANNINGTON COMMERCIAL PRODUCT NAME: DESIGNER ESSENTIALS COLOR: TOFFEE 219 SIZE: 12"X12" LOCATION: RESTROOM, BREAKROOM & CORRIDOR
PL-3	MANUFACTURER: WILSONART COLOR: ASIAN SUN 7951 FINISH: 38 LOCATION: NEW STANDARD TELLER
PL-5	MANUFACTURER: WILSONART COLOR: GRAPHITE NEBULA 4623 FINISH: TEXTURED GLOSS LOCATION: NEW STANDARD TELLER
PL-6	MANUFACTURER: WILSONART COLOR: BLACK 1595 FINISH: 60 MATTE LOCATION: NEW STANDARD TELLER
PL-7	MANUFACTURER: WILSONART COLOR: FROSTY WHITE 1573-60 FINISH: MATTE LOCATION: BREAK ROOM & COUPON BOOTH
PL-8	MANUFACTURER: WILSONART PRODUCT NAME: HIGH WEAR LAMINATE COLOR: FROSTY WHITE 1573-60, TYPE: 107HW FINISH: MATTE LOCATION: COUPON BOOTH

FINISH PLAN
SCALE: 3/16" = 1'-0"

FINISH SCHEDULE
SCALE: 12" = 1'-0"

J:\11.6560.125\BIM\Building Model\User Model Files\Delta Cotti_2014_BOA_Portland-39 Auburn St_ E2013.rvt

NOTE: EVERY KEY NOTE MAY NOT APPEAR ON THIS PAGE