



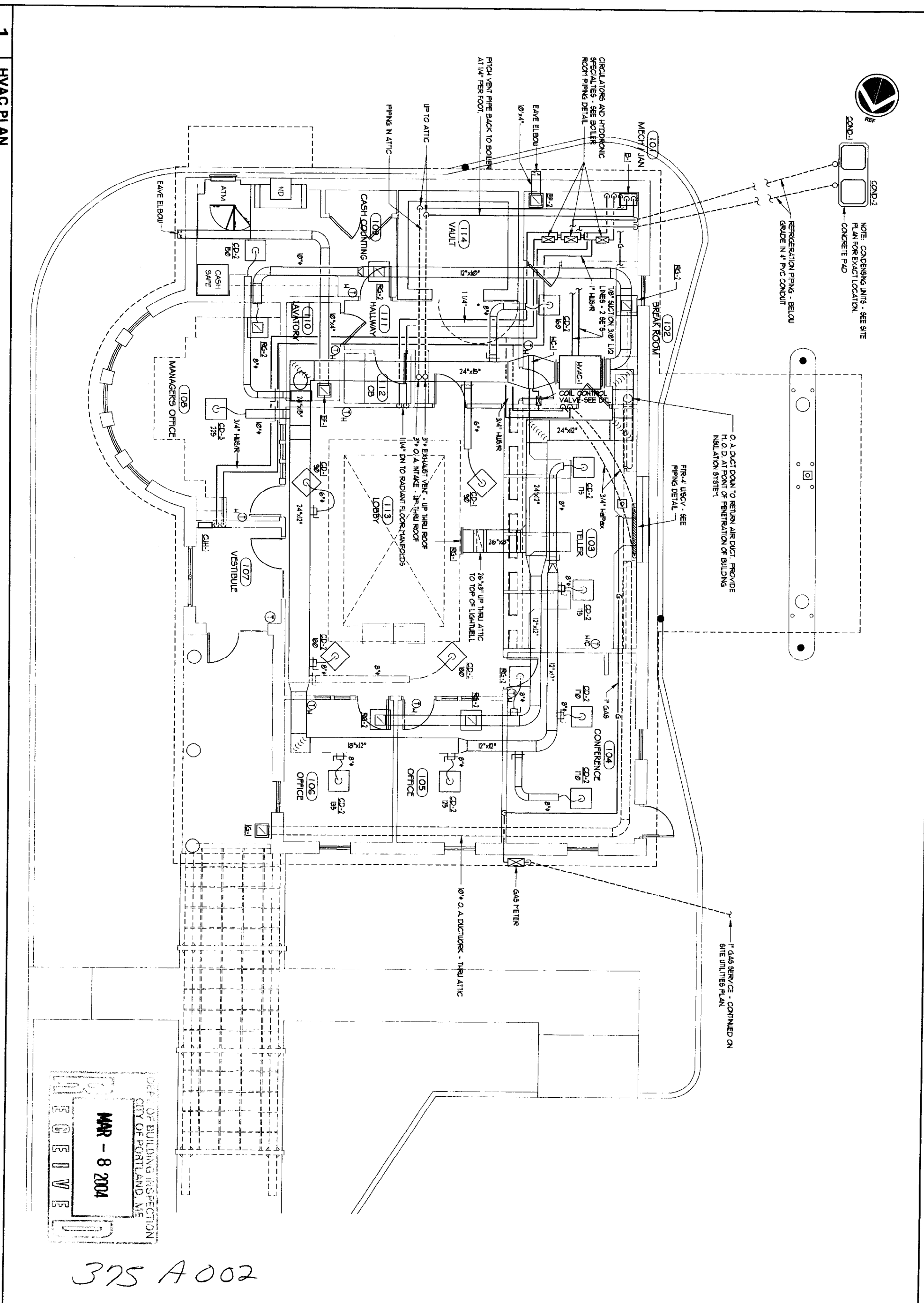
COND-1
COND-2
NOTE: CONDENSING UNITS - SEE SITE PLAN FOR EXACT LOCATION - CONCRETE PAD

REFRIGERATION PIPING - BELOW GRADE IN 4" PVC CONDUIT

0.4 DUCT DOWN TO RETURN AIR DUCT - PROVIDE N.O.D. AT POINT OF PENETRATION OF BUILDING INSULATION SYSTEM.

FR-4 UBCV - SEE PIPING DETAIL

1" GAS SERVICE - CONTINUED ON SITE UTILITIES PLAN



RECEIVED
MAR - 8 2004
DEPT. OF BUILDING INSPECTION
CITY OF PORTLAND, ME

375 A 002

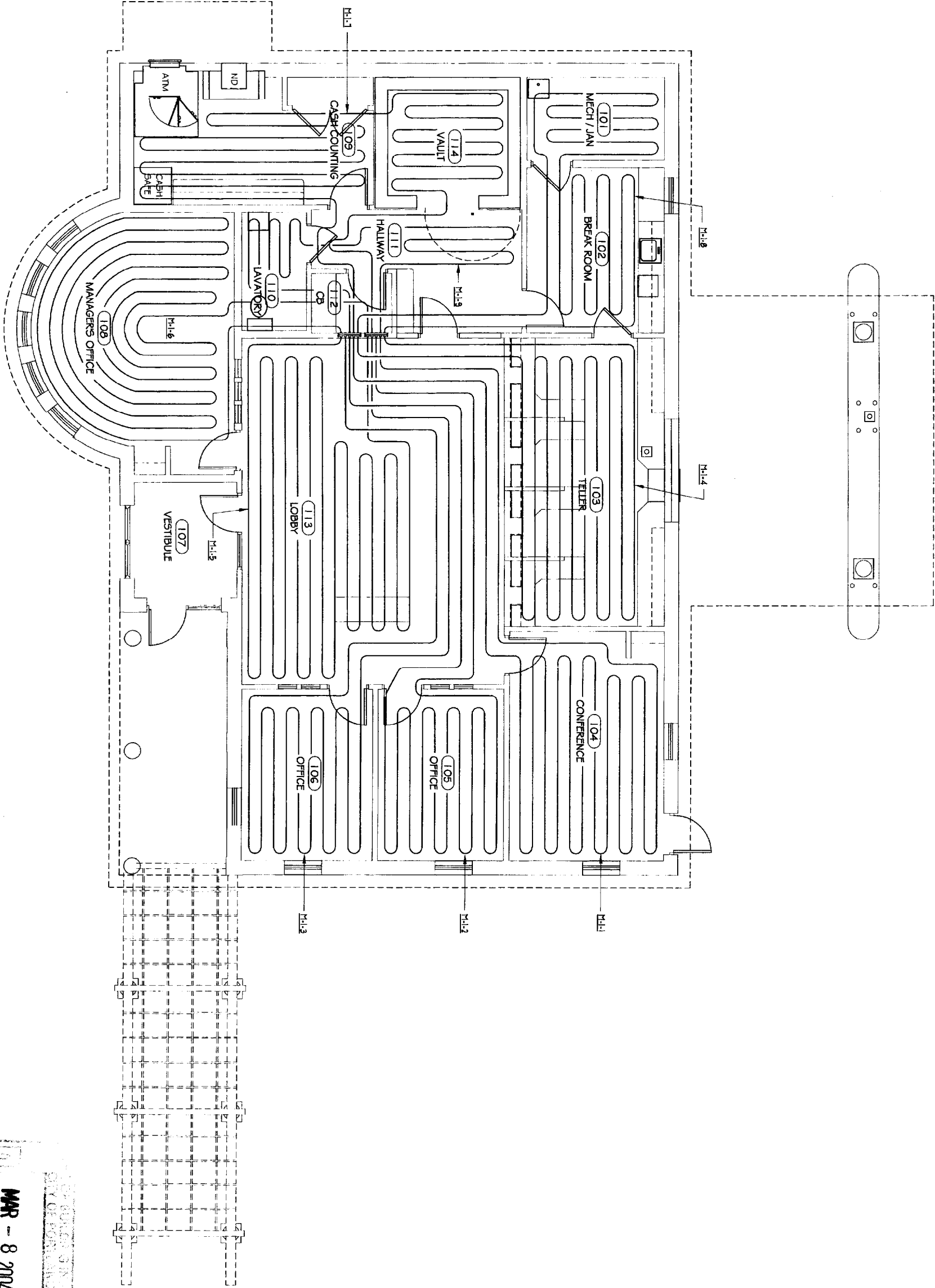
1 HVAC PLAN

1/4" = 1'-0"

	Bath Savings Institution Branch Bank - Auburn St. Portland, Maine	PLATZ ASSOCIATES Architects - Engineers Construction Managers Tel 207-784-2941 Fax 207-784-3856 Two Great Falls Plaza, Auburn, Maine 04210
	PROJECT NO. 22003 DATE 14 JUL 03 DRAWN BY CHECKED BY SCALE 1/4" = 1'-0" SHEET NO. M101	



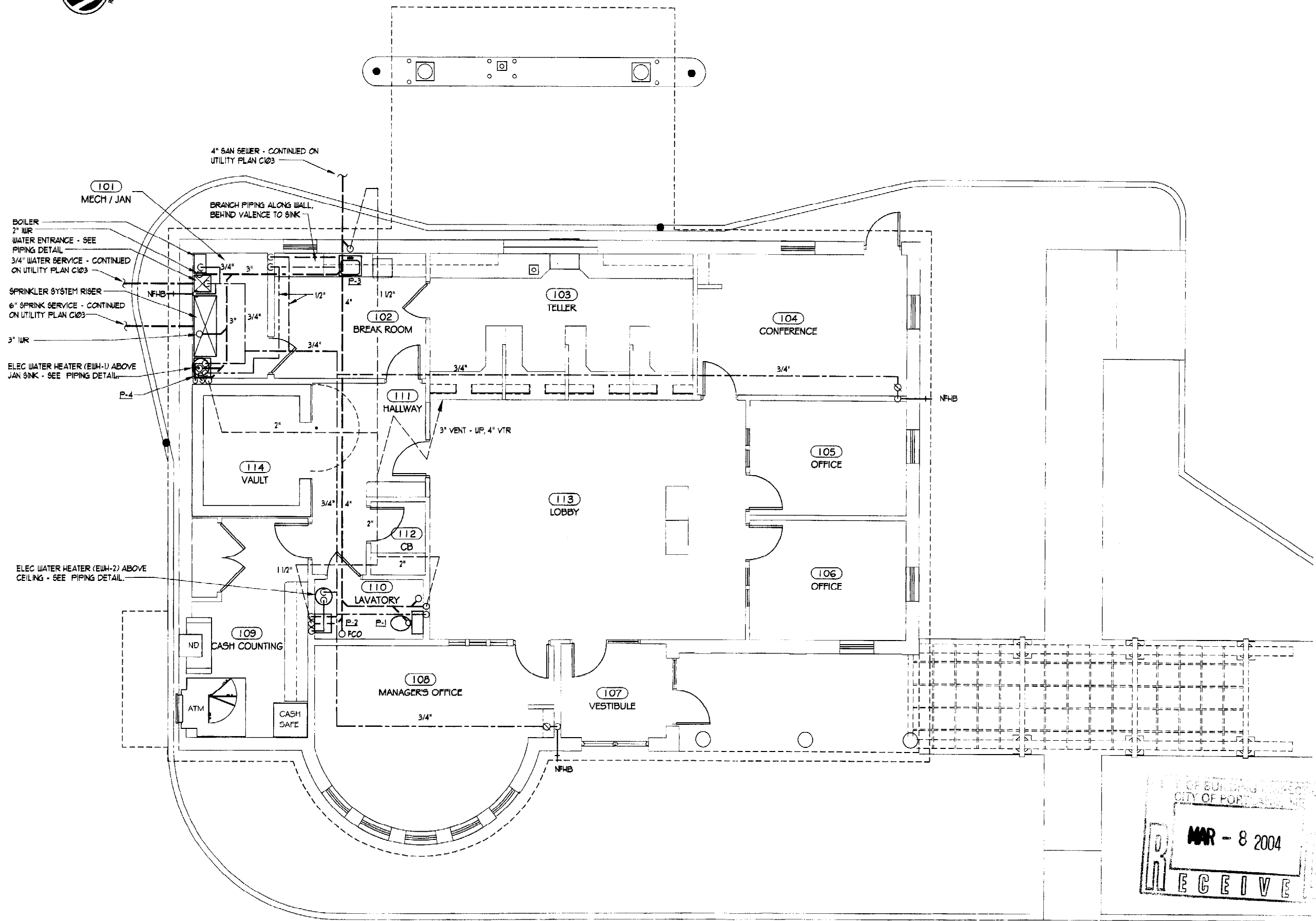
1
RADIANT FLOOR PLAN



375 A002

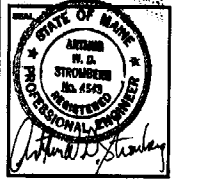
RECEIVED
 MAR - 8 2004
 OFFICE OF THE CLERK OF SUPERIOR COURT
 PORTLAND, MAINE

M102	DATE: 22003		Bath Savings Institution Branch Bank - Auburn St. Portland, Maine	PLATZ ASSOCIATES Tel 207-784-2941 Fax 207-784-3856 Architects - Engineers Construction Managers Two Great Falls Plaza, Auburn, Maine 04210
	SCALE: 1/4" = 1'-0" ORIGINAL DATE: 14 JUL 03 REVISION DATE:			



PLATZ ASSOCIATES
Architects - Engineers
Construction Managers
Tel 207-784-2941
Fax 207-784-3866
Two Great Falls Plaza, Auburn, Maine 04210

**Bath Savings Institution
Branch Bank - Auburn St.
Portland, Maine**



DRAWING STATUS
 OFFICE REVIEW
 CLIENT REVIEW
 PERMITS REVIEW
 SUBMIT
 CONTRACT DRAWING
 CONSTRUCTION
No drawing shall be recognized as a construction document unless it bears a blue inked registration seal.

DRAWING TITLE
PLUMBING PLAN

JOB NO.
22003

OWNER BY: _____ CHECKED BY: _____

SCALE
1/4" = 1'-0"

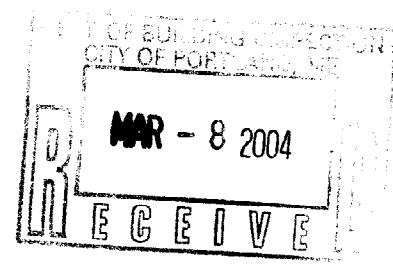
ORIGINAL DATE
14 JUL 03

REVISION DATE

SHEET

M103

375A002



HVAC UNIT SCHEDULE																	
TAG	CM	FIN OA	ESP	FAN	FILTER	FAN ELECTRICAL	COOLING COIL	CONDENSING UNIT	REFN PPG	REMARKS							
		CRF	NHG	HPM	SIZE	WV	BTU/HR	TYPE	SECTION								
HYAC-1	2,000	300	10"	1031	(1) 16"x20" (1) 20"x20"	240-1-60	541	40.3	112" DB/633" MB	95°F	(2) 1/2"	(2) 1/2"	(2) 20"	(2) 30"	240-1-60	(2) 3/8" (2) 1/8"	TRANE MODEL TUE06-08 AIR HANDLING UNIT AND TDO (2) MODEL TTR030C CONDENSING UNITS W/ TXV EXPANSION VALVES

DIFFUSER SCHEDULE						
TAG	SIZE	CFM	SP	THROW	NC	REMARKS
			(in sq)	(feet)		
CD-1	6"	100	0.03	2'-6"	20	ANEMOSTAT MODEL EPL, 4 WAY PATTERN, LAT-IN
CD-2	8"	210	0.07	4'-9"	23	ANEMOSTAT MODEL EPL, 4 WAY PATTERN, LAT-IN
CD-3	10"	360	0.045	5'-11"	26	ANEMOSTAT MODEL EPL, 4 WAY PATTERN, LAT-IN
RS-1	26"x18"	300	0.04	-	20-25	ANEMOSTAT MODEL 634D, 3/4" BLADE SPACING SURFACE
RS-2	17"x17"	400	0.03	-	20	ANEMOSTAT MODEL GCL, 1/2"x1/2" CORES, LAT-IN
RS-1	17"x17"	300	0.02	-	20	ANEMOSTAT MODEL GCL, 1/2"x1/2" CORES, SURFACE MOUNT

EXHAUST FAN PERFORMANCE SCHEDULE									
TAG	FLOW	ESP	SPEED	NOISE	DRIVE	ELECTRICAL	REMARKS		
	CFM	NHG	RPM	NOISE	TYPE	HP	V/PH/Hz		
EF-1	100	0.375	1500	4.5	DIRECT	1/20 W	120-1-60	CABINET FAN, ACME MODEL V80 W/ EAVE ELBOW 4 BDD	
EF-2	100	0.375	1500	4.5	DIRECT	1/20 W	120-1-60	CABINET FAN, ACME MODEL V80 W/ EAVE ELBOW 4 BDD	

BOILER SCHEDULE									
TAG	GRASS	OUTPUT	AGE	TYPE	MANUFACTURER / MODEL				
	TYPE	BTU	YRS						
B-1	45	17	9.5	NAT GAS	N. Y. THERMAL INC. TRINITY MODEL T80 W/ MODULATING BURNER CAPACITY CONTROL				

CIRCULATING PUMP SCHEDULE									
TAG	FLOW	HEAD	FLANGE	SPEED	EFFICIENCY	ELECTRICAL	REMARKS		
	CFM	FT HG	NOSE	RPM	%	HP	V/PH/Hz		
P-1	953	6.0	1"	3450	-	1/8	120-1-60	TACO MODEL 004 INLINE CIRCULATOR	
P-2	761	5.0	3/4"	3450	-	1/8	120-1-60	TACO MODEL 006 INLINE CIRCULATOR	
P-3	183	12.1	1"	3450	-	1/8	120-1-60	TACO MODEL 002 INLINE CIRCULATOR	

HEATING COIL SCHEDULE									
TAG	OUTPUT	AIRFLOW	S.P.D.	WATER FLOW	W.P.D.	ENT WATER	ENT AIR	LG AIR	REMARKS
	MBH	CFM	NHG	GPM	FT	TEMP °F	TEMP °F	TEMP °F	
HC-1	40.0	2,000.0	0.25"	1.52	0.34	130°F	50°F	16°F	39"x18", 1 ROW, 80 PINS PER FOOT, 5/8" TUBE

RADIANT HEATING SYSTEM SCHEDULE									
AREA SERVED	MANFOLD NO.	LOOP NO.	HEATING LOAD	HEAT DENSITY	LOOP LENGTH	LOOP FLOOR	HEAD LOSS	REMARKS	
			MBH	BTU/HR	FT	CFM	FT		
CONFERENCE 104	1	1	5.2	22.6	296	1.04	7.35	2" O.C. CONCRETE FLOOR WITH CARPET	
OFFICE 105	1	2	2.0	14.3	213	0.40	3.31	2" O.C. CONCRETE FLOOR WITH CARPET	
OFFICE 106	1	3	4.2	28.4	214	0.84	5.31	2" O.C. CONCRETE FLOOR WITH CARPET	
TELLER 103	1	4	4.6	19.4	262	0.92	5.70	2" O.C. CONCRETE FLOOR WITH CARPET	
LOBBY 103	1	5	6.25	19.8	338	1.29	9.11	2" O.C. CONC FLOOR WITH CERAMIC TILE	
MECH OFFICE 108	1	6	6.2	22.6	291	1.24	8.75	2" O.C. CONCRETE FLOOR WITH CARPET	
CASH COUNTING 109	1	7	6.2	26.0	310	1.24	9.11	2" O.C. CONCRETE FLOOR WITH VCT	
BREAK ROOM 102	1	8	3.5	21.9	204	0.78	4.69	2" O.C. CONCRETE FLOOR WITH VCT	
LAVATORY 110	1	9	0.60	7.0	60	0.12	3.03	8" O.C. IN LAV, 12" O.C. IN HALL	

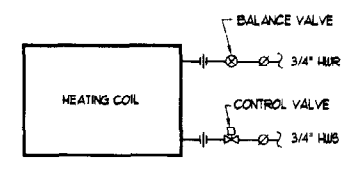
NOTE: LOOP LENGTHS INCLUDE LEADER LENGTHS.

PLUMBING FIXTURE CONNECTION SCHEDULE					
TAG	SI	VENT	CU	HU	REMARKS
P-1	3"	2"	1/2"	-	WATER CLOSET, FLOOR MOUNTED, TANK TYPE, ADA COMPLIANT
P-2	2"	1 1/2"	1/2"	1/2"	LAVATORY, WALL HUNG, ADA COMPLIANT
P-3	2"	1 1/2"	1/2"	1/2"	SINK, STAINLESS STEEL, SINGLE BOUL, ADA COMPLIANT
P-4	3"	2"	1/2"	1/2"	SERVICE SINK, FLOOR MOUNT

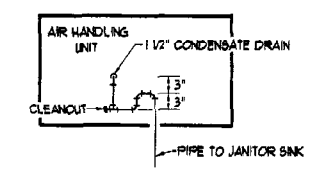
CABINET UNIT HEATER SCHEDULE									
TAG	CAPACITY	AIRFLOW	WATER FLOW	W.P.D.	FAN	ELECTRICAL	REMARKS		
	MBH	CFM	GPM	FT	RPM	HP	V/PH/Hz		
CUH-1	132	75	1.0	0.23	1300	0.0	120-1-60	VRY PRODUCTS MODEL KSUK K500 RECESSED HEATER	

LEGEND

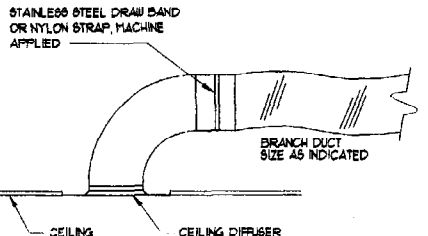
- HWR — HOT WATER SUPPLY & RETURN PIPING
- G — GAS PIPING
- L — REFRIGERANT LIQUID LINE
- S — REFRIGERANT SUCTION LINE
- B — SANITARY PIPING, BELOW GRADE
- D — DOMESTIC COLD WATER PIPING
- H — DOMESTIC HOT WATER PIPING
- V — VENT PIPING
- P — PRESSURE GAGE
- T — TURNING VANES
- F — FLEXIBLE DUCT CONNECTION
- M — MANUAL BALANCING DAMPER
- D — FLEXIBLE DUCT
- C — CEILING DIFFUSER/RETURN GRILLE
- B — BALL VALVE
- G — GATE VALVE
- P — PRESSURE REDUCING VALVE
- B — BACKFLOW PREVENTER
- C — CHECK VALVE
- C — CONTROL VALVE
- B — BALANCING VALVE
- C — CIRCULATING PUMP
- U — UNION
- S — STRAINER
- S — STRAINER W/ BLOWDOWN HOSE CONNECTION
- R — REDUCER
- C — CONTROL SENSOR
- T — THERMOMETER
- S — THERMOSTAT / SENSOR
- H — HOT WATER SUPPLY
- R — HOT WATER RETURN
- O.A. — OUTSIDE AIR
- A.P. — ACCESS PANEL
- M.O. — MOTOR OPERATED DAMPER
- C.O. — CONDENSING UNIT
- I.G. — INTAKE GRILLE
- C.D. — CEILING DIFFUSER
- R.G. — RETURN GRILLE
- H.C. — HEATING COIL
- E.F. — EXHAUST FAN
- C.P. — CIRCULATING PUMP
- H.V. — HVAC UNIT
- C.W. — DOMESTIC COLD WATER
- H.W. — DOMESTIC HOT WATER
- V.T.R. — VENT THRU ROOF
- F.D. — FLOOR DRAIN
- F.C. — FLOOR CLEANOUT
- W.C. — WALL CLEANOUT
- I.R. — INDIRECT WASTE RECEIVER
- N.F.H.B. — NON-FREEZE HOSE BIBB
- U.G. — UNDERGROUND
- C. — CLEANOUT



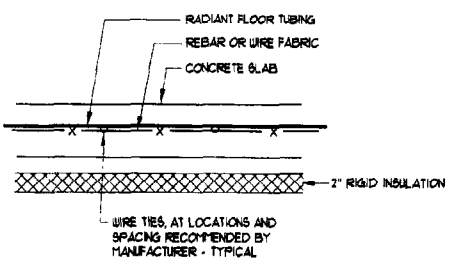
HEATING COIL PIPING DETAIL
NO SCALE
NOTE: PIPING DETAIL FOR CABINET UNIT HEATER SIMILAR EXCEPT WITHOUT CONTROL VALVE. PROVIDE WITH AQUA-STAT, SET AT 100°F.



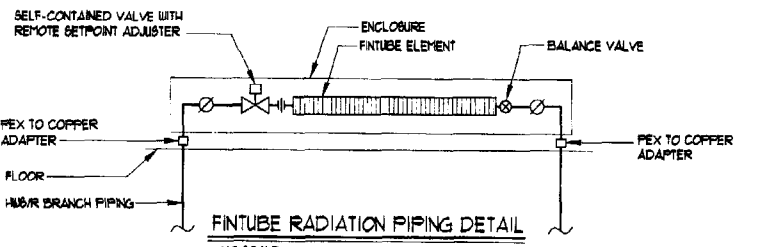
CONDENSATE DRAIN PIPING DETAIL
NO SCALE



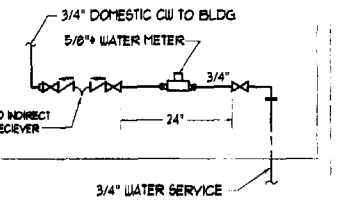
DIFFUSER CONNECTION DETAIL
NO SCALE



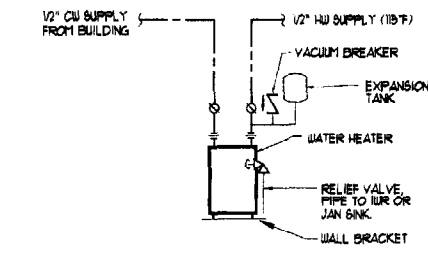
RADIANT FLOOR TUBING INSTALLATION DETAIL FOR CONCRETE FLOORS
NO SCALE



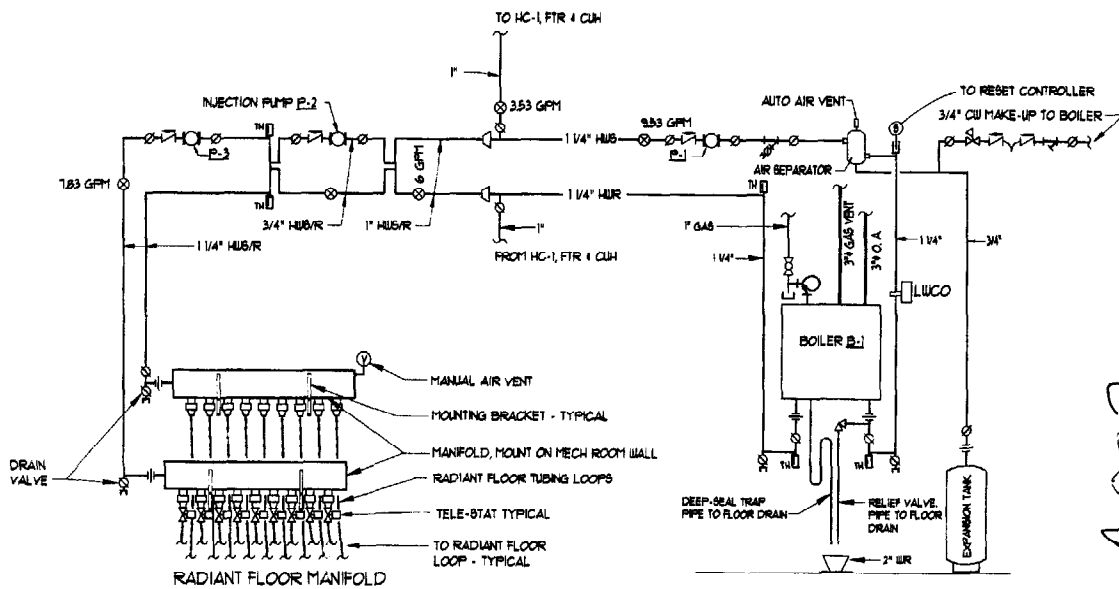
FINTUBE RADIATION PIPING DETAIL
NO SCALE
NOTES: BALANCE FLOW THROUGH FTR AT 1.0 GPM



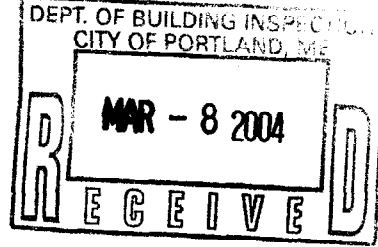
WATER ENTRANCE PIPING DETAIL
NO SCALE



DOMESTIC WATER HEATER PIPING DETAIL
NO SCALE



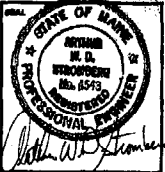
BOILER ROOM PIPING DETAIL
SCALE: NONE



375-A002

PLATZ ASSOCIATES
Architects - Engineers
Construction Managers
Tel 207-784-2941
Fax 207-784-3868
Two Great Falls Plaza, Auburn, Maine 04210

Bath Savings Institution
Branch Bank - Auburn St.
Portland, Maine



ISSUING STATUS:
 OFFICE REVIEW
 CLIENT REVIEW
 PERMIT REVIEW
 NO SET
 CONTRACT DRAWING
 CONSTRUCTION

SUBJECT TITLE:
MECHANICAL SCHEDULES, DETAILS

JOB NO.: 22003

SCALE: NOTED

ISSUANCE DATE: 14 JUL 03

ISSUANCE DATE:

ISSUANCE DATE:

M100