

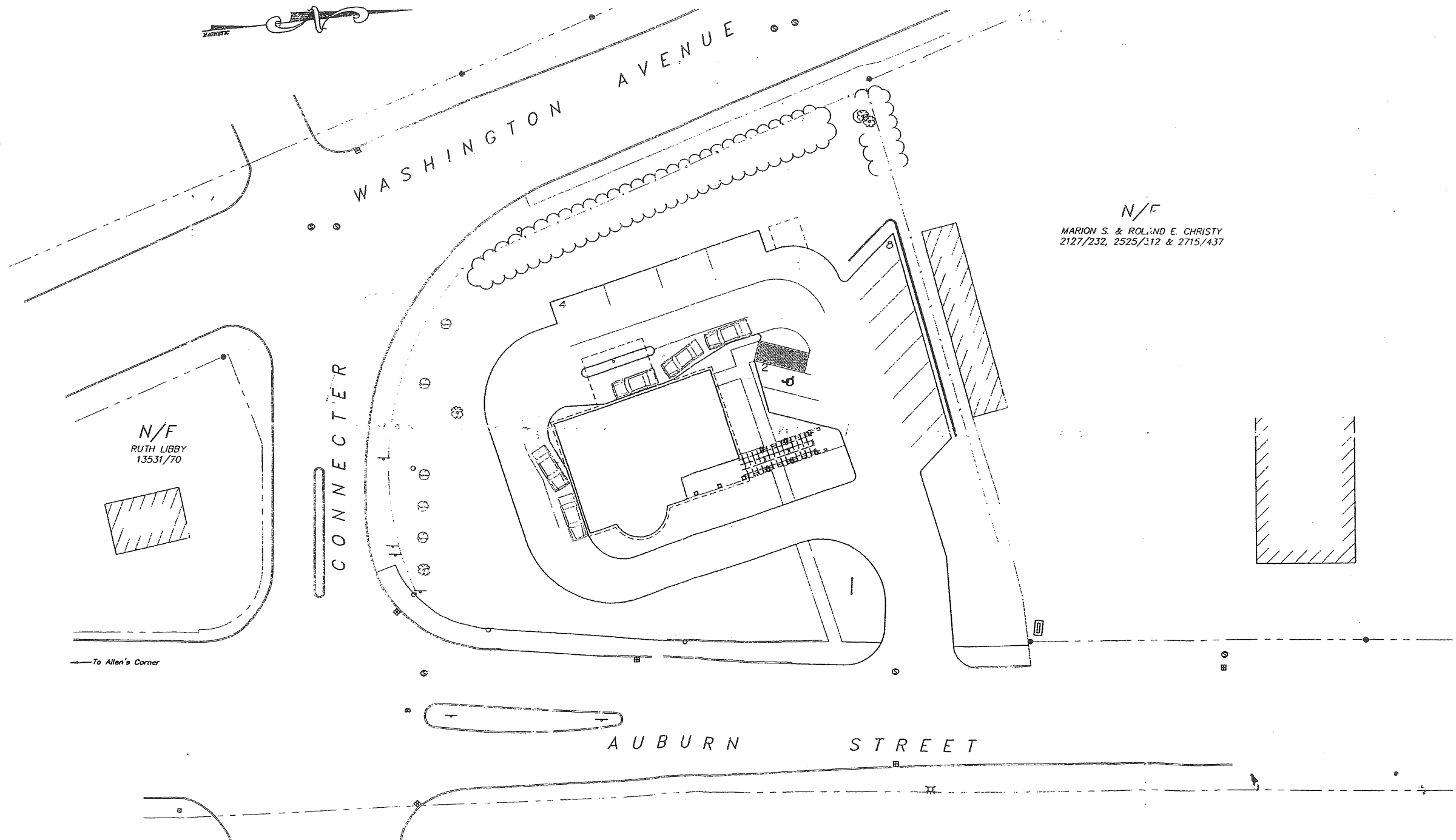
375 - A - 2001

40-42 Auburn St, Portland, ME

Bath Savings Branch Bank

Bath Savings Institution

105 Front Street, Bath, ME 04530



N/F
MARION S. & ROLAND E. CHRISTY
2127/232, 2525/312 & 2715/437

N/F
RUTH LIBBY
13531/70

PLATZ ASSOC
Architects
Constructors
Tel 207-784-2941
Fax 207-784-3856
100 Great Falls Plaza, Auburn, ME

Bath Savings Institution
Portland, Maine

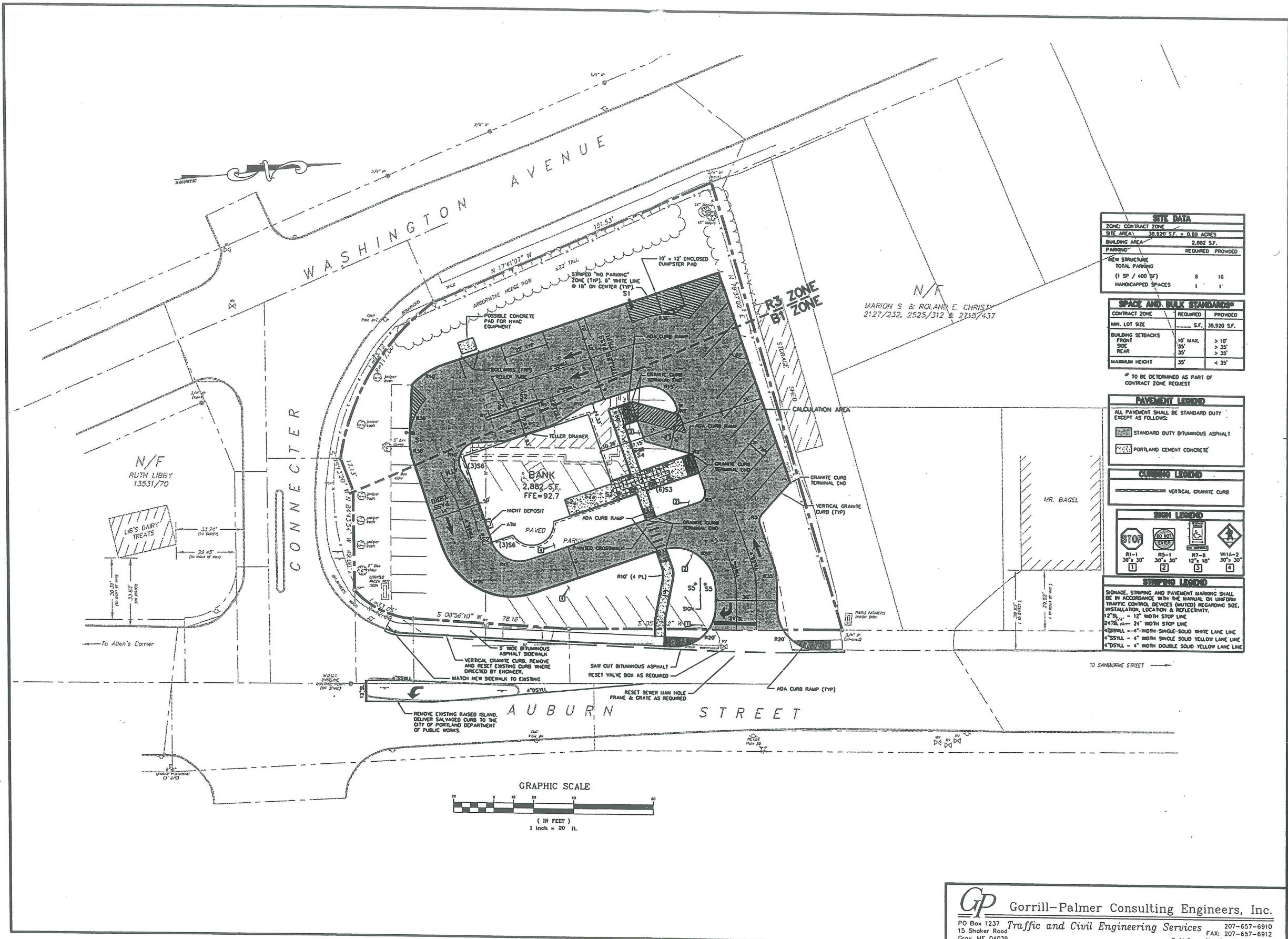
REVIEW COPY

DRAWING STATUS
 OFFICE REVIEW
 CLIENT REVIEW
 PERMIT REVIEW
 BID SET
 CONTRACT DRAWING
 CONSTRUCTION

No drawing shall be recognized as a construction document unless it bears a blue ink seal registration mark.

PROJECT TITLE
PROPOSED SITE PLAN

JOB NO. 22003



SITE DATA		
ZONE: CONTRACT ZONE		
SITE AREA	30,920 S.F. = 0.89 ACRES	
BUILDING AREA	2,882 S.F.	
PARKING	REQUIRED	PROVIDED
NEW STRUCTURE		
TOTAL PARKING	8	16
(1 SP / 400 SF)		
HANDICAPPED SPACES	1	1

SPACE AND BULK STANDARDS		
CONTRACT ZONE	REQUIRED	PROVIDED
MIN. LOT SIZE	S.F.	30,920 S.F.
BUILDING SETBACKS		
FRONT	10' MAX.	> 10'
SIDE	35'	> 35'
REAR	35'	> 35'
MAXIMUM HEIGHT	35'	< 35'

* TO BE DETERMINED AS PART OF CONTRACT ZONE REQUEST

PAVEMENT LEGEND	
ALL PAVEMENT SHALL BE STANDARD DUTY EXCEPT AS FOLLOWS:	
	STANDARD DUTY BITUMINOUS ASPHALT
	PORTLAND CEMENT CONCRETE

CURB LEGEND	
	VERTICAL GRANITE CURB

SIGN LEGEND	
	STOP
	NO RIGHT TURN
	HANDICAP
	ONE WAY
R1-1	30" x 30"
R2-1	30" x 30"
R7-8	12" x 18"
W11A-2	30" x 30"

STRIPING LEGEND	
STORAGE, STRIPING AND PAVEMENT MARKING SHALL BE IN ACCORDANCE WITH THE MANUAL ON UNIFORM TRAFFIC CONTROL DEVICES (MUTCD) REGARDING SIZE, INSTALLATION, LOCATION & REFLECTIVITY.	
12" x 30"	12" BOTH STOP LINE
24" x 48"	24" BOTH STOP LINE
4" SSLL	4" BOTH SINGLE-SOLID WHITE LANE LINE
4" SSYL	4" BOTH SINGLE-SOLID YELLOW LANE LINE
4" DSYL	4" BOTH DOUBLE-SOLID YELLOW LANE LINE

PLATZ ASSOCIATES
 Architects - Engineers
 Construction Managers
 Tel: 207-784-2941
 Fax: 207-784-3856
 Two Great Falls Plaza, Auburn, Maine 04210

Bath Savings Institution
 Portland, Maine

DRAWING STATUS
 OFFICE REVIEW
 CLIENT REVIEW
 BOARD REVIEW
 NO SET
 CONTRACT DRAWING
 CONSTRUCTION

SHEET TITLE
SITE LAYOUT PLAN

JOB NO. 22003
 GP JOB NO. 587.1

DRAWN BY SGB
 CHECKED BY WCH

SCALE 1" = 20'

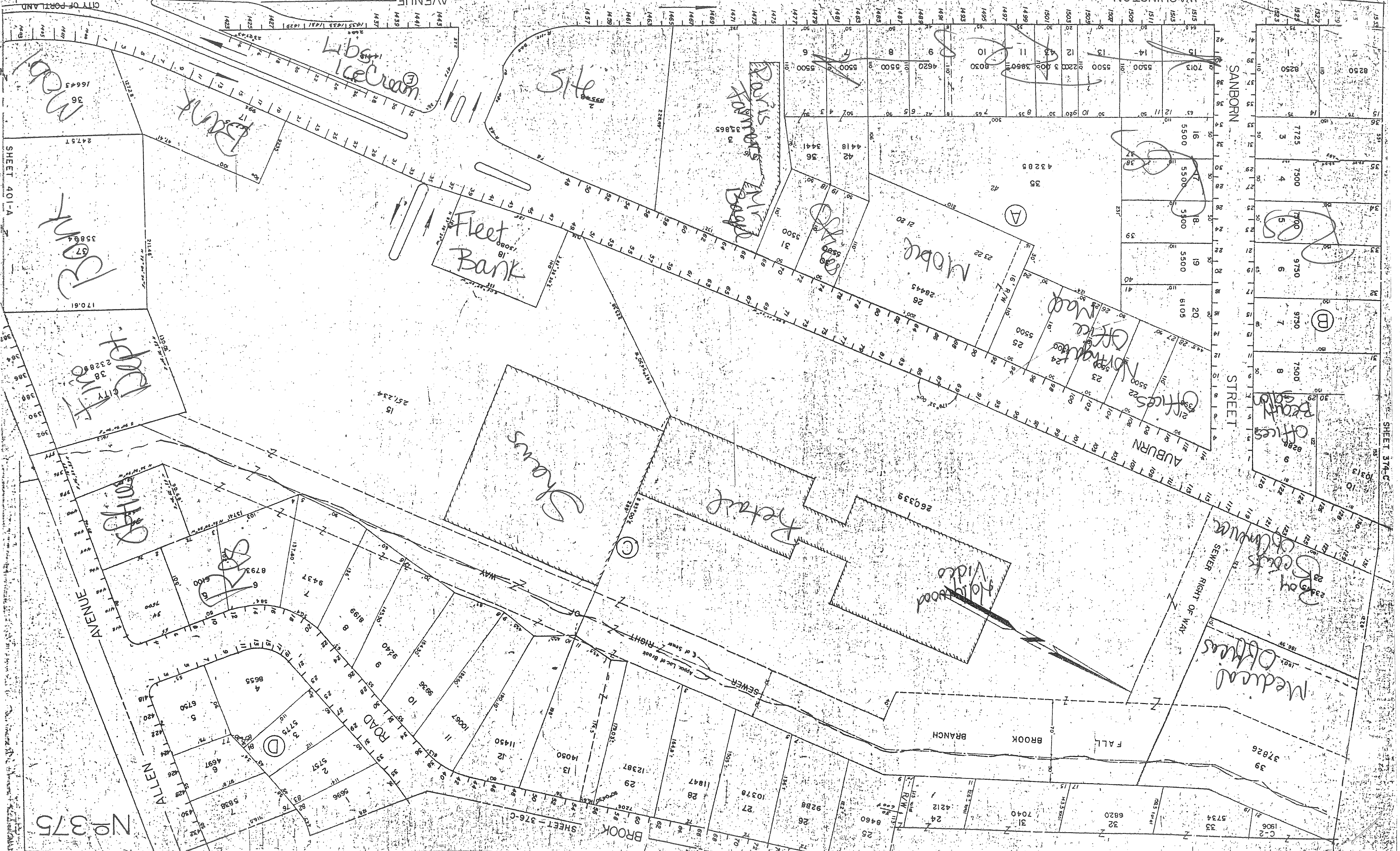
ORIGINAL DATE 1 NOV 02

REVISION DATE

SHEET

C102

GP Gorrill-Palmer Consulting Engineers, Inc.
 PO Box 1237 Traffic and Civil Engineering Services 207-657-6910
 15 Shaker Road Gray, ME 04039 FAX: 207-657-6912
 E-Mail: molbox@gorrillpalmer.com





ALLEN

AVENUE

SHORT STREET

CYPRESS

PENNELL

HENNESSY

DRIVE

FISHER STREET

BREWSTER STREET

CHAPMAN STREET

STREET

STREET

STREET

ABBOTT

AVENUE

STREET

AVENUE

WASHINGTON

SHEET 347-D

SHEET 343-A

SHEET 401-D

SHEET 437-D

Restaurants

Offices

Medical Office

Road

Handwritten signature/initials

Handwritten signature/initials

(B)

(F)

(T)

(G)

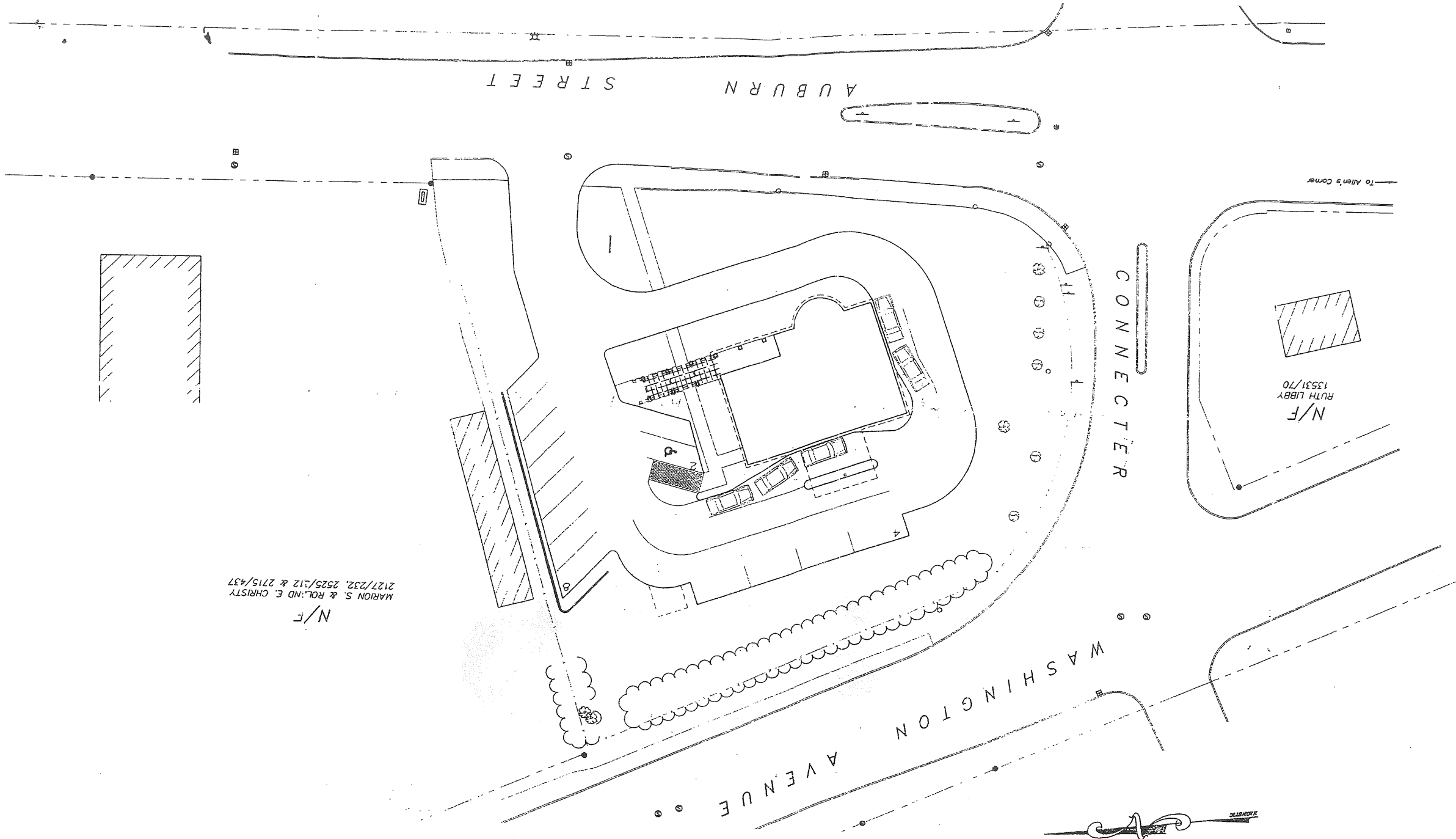
(H)

(C)

(D)

(E)

THOMAS



Exhibit

B

PROPOSED SITE PLAN

- Having been reviewed and approved as a condition of the proposed site plan, the following shall be completed as a condition of the proposed site plan:
- OFFICE REVIEW
 - CLIENT REVIEW
 - PERMIT REVIEW
 - NO SET
 - CONTRACT DRAWING
 - CONSTRUCTION

REVIEW COPY

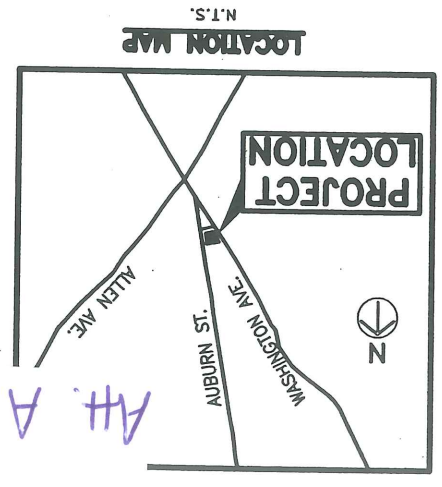
Bath Savings Institution
Portland, Maine

PLATZ ASSOC
Architects
Constructors
1100 Grand Plains Plaza, Annapolis, MD
Tel 207-784-2941
Fax 207-784-3856

PROJECT PARCEL SITE			
ASSESSOR'S MAP & LOT NUMBERS	MAP	375	A
	BLOCK	2	0.89 Acres
	LOT	2	SIZE

Owner & Applicant
BATH SAVINGS INSTITUTION
 105 FRONT STREET
 BATH, ME 04530
 CONTACT:

BATH SAVINGS INSTITUTION BRANCH BANK 40-42 AUBURN STREET PORTLAND, MAINE DEVELOPMENT PLANS FOR



NOTES

1. TOPOGRAPHIC DATA AND BOUNDARY INFORMATION IS BASED ON A GROUND SURVEY CONDUCTED BY THE LAND SURVEYING OF MECHANIC FALLS, MAINE.

2. THE CONTRACTOR IS SPECIFICALLY THAT THE LOCATION AND/OR ELEVATION OF THE EXISTING UTILITIES AS SHOWN ON THESE PLANS IS BASED ON RECORDS OF THE VARIOUS UTILITY COMPANIES AND WHERE POSSIBLE MEASUREMENTS TAKEN IN THE FIELD. THIS INFORMATION IS NOT TO BE RELIED ON AS BEING EXACT AND COMPLETE. THE CONTRACTOR MUST CALL THE APPROPRIATE UTILITY COMPANY TO REQUEST EXACT FIELD LOCATION OF UTILITIES. IT SHALL BE THE RESPONSIBILITY OF THE CONTRACTOR TO RELOCATE ALL EXISTING UTILITIES WHICH CONFLICT WITH THE PROPOSED IMPROVEMENTS SHOWN ON THE PLANS.

3. MAINTENANCE OF EROSION CONTROL MEASURES IS OF PARAMOUNT IMPORTANCE TO THE OWNER AND THE CONTRACTOR IS RESPONSIBLE FOR COMPLYING WITH ALL EROSION CONTROL MEASURES SHOWN ON THE PLANS. ADDITIONAL EROSION CONTROL MEASURES SHALL BE INSTALLED IF DEEMED NECESSARY BY ON-SITE INSPECTIONS OF THE OWNER OR THEIR REPRESENTATIVES AT NO ADDITIONAL COST TO THE OWNER.

4. ALL MATERIAL SCHEDULES SHOWN ON THE PLANS ARE FOR GENERAL INFORMATION ONLY. THE CONTRACTOR SHALL PREPARE HIS OWN MATERIAL SCHEDULES BASED UPON HIS PLAN REVIEW. ALL SCHEDULES SHALL BE PERIODICALLY CHECKED BY THE CONTRACTOR PRIOR TO ORDERING MATERIALS OR PERFORMANCE WORK.

5. ALL MATERIALS AND CONSTRUCTION METHODS SHALL CONFORM TO MAINE DEPARTMENT OF TRANSPORTATION SPECIFICATIONS AND THE SPECIFICATIONS ATTACHED TO THE PROJECT DOCUMENTS.

6. THE CONTRACTOR SHALL PROVIDE, ERECT AND MAINTAIN ALL NECESSARY BARRELS, LIGHTS, WARNING SIGNS AND OTHER DEVICES TO SAFEGUARD TRAFFIC PROPERLY WHILE WORK IS IN PROGRESS FOR THE DURATION OF THE PROJECT.

7. THE CONTRACTOR SHALL RETURNED PERMITS PRIOR TO SUBMITTING A BID FOR THIS PROJECT, AND INCLUDE COSTS AS NECESSARY TO COMPLY WITH THE CONDITIONS OF THESE PERMITS.

8. THE CONTRACTOR SHALL REVIEW THE TERMS AND CONDITIONS OF A SITE PLAN PERMIT FROM THE CITY OF PORTLAND, WHICH WILL BE MADE A PART OF THE CONTRACT BID DOCUMENTS. THE CONTRACTOR WILL BE GOVERNED BY THE ZONING ORDINANCES WHICH ARE AVAILABLE FOR VIEWING AT THE OFFICE OF THE ENGINEER OR THE MUNICIPAL OFFICE.

9. THE CONTRACTOR SHALL RETURNED PERMITS PRIOR TO SUBMITTING A BID FOR THIS PROJECT, AND INCLUDE COSTS AS NECESSARY TO COMPLY WITH THE CONDITIONS OF THESE PERMITS.

10. THE CONTRACTOR SHALL REVIEW THE TERMS AND CONDITIONS OF A SITE PLAN PERMIT FROM THE CITY OF PORTLAND, WHICH WILL BE MADE A PART OF THE CONTRACT BID DOCUMENTS. THE CONTRACTOR WILL BE GOVERNED BY THE ZONING ORDINANCES WHICH ARE AVAILABLE FOR VIEWING AT THE OFFICE OF THE ENGINEER OR THE MUNICIPAL OFFICE.

11. THE CONTRACTOR SHALL RETURNED PERMITS PRIOR TO SUBMITTING A BID FOR THIS PROJECT, AND INCLUDE COSTS AS NECESSARY TO COMPLY WITH THE CONDITIONS OF THESE PERMITS.

12. THE CONTRACTOR SHALL REVIEW THE TERMS AND CONDITIONS OF A SITE PLAN PERMIT FROM THE CITY OF PORTLAND, WHICH WILL BE MADE A PART OF THE CONTRACT BID DOCUMENTS. THE CONTRACTOR WILL BE GOVERNED BY THE ZONING ORDINANCES WHICH ARE AVAILABLE FOR VIEWING AT THE OFFICE OF THE ENGINEER OR THE MUNICIPAL OFFICE.

13. THE CONTRACTOR SHALL RETURNED PERMITS PRIOR TO SUBMITTING A BID FOR THIS PROJECT, AND INCLUDE COSTS AS NECESSARY TO COMPLY WITH THE CONDITIONS OF THESE PERMITS.

14. THE CONTRACTOR SHALL REVIEW THE TERMS AND CONDITIONS OF A SITE PLAN PERMIT FROM THE CITY OF PORTLAND, WHICH WILL BE MADE A PART OF THE CONTRACT BID DOCUMENTS. THE CONTRACTOR WILL BE GOVERNED BY THE ZONING ORDINANCES WHICH ARE AVAILABLE FOR VIEWING AT THE OFFICE OF THE ENGINEER OR THE MUNICIPAL OFFICE.

15. THE CONTRACTOR SHALL RETURNED PERMITS PRIOR TO SUBMITTING A BID FOR THIS PROJECT, AND INCLUDE COSTS AS NECESSARY TO COMPLY WITH THE CONDITIONS OF THESE PERMITS.

16. THE CONTRACTOR SHALL REVIEW THE TERMS AND CONDITIONS OF A SITE PLAN PERMIT FROM THE CITY OF PORTLAND, WHICH WILL BE MADE A PART OF THE CONTRACT BID DOCUMENTS. THE CONTRACTOR WILL BE GOVERNED BY THE ZONING ORDINANCES WHICH ARE AVAILABLE FOR VIEWING AT THE OFFICE OF THE ENGINEER OR THE MUNICIPAL OFFICE.

17. THE CONTRACTOR SHALL RETURNED PERMITS PRIOR TO SUBMITTING A BID FOR THIS PROJECT, AND INCLUDE COSTS AS NECESSARY TO COMPLY WITH THE CONDITIONS OF THESE PERMITS.

18. THE CONTRACTOR SHALL REVIEW THE TERMS AND CONDITIONS OF A SITE PLAN PERMIT FROM THE CITY OF PORTLAND, WHICH WILL BE MADE A PART OF THE CONTRACT BID DOCUMENTS. THE CONTRACTOR WILL BE GOVERNED BY THE ZONING ORDINANCES WHICH ARE AVAILABLE FOR VIEWING AT THE OFFICE OF THE ENGINEER OR THE MUNICIPAL OFFICE.

19. THE CONTRACTOR SHALL RETURNED PERMITS PRIOR TO SUBMITTING A BID FOR THIS PROJECT, AND INCLUDE COSTS AS NECESSARY TO COMPLY WITH THE CONDITIONS OF THESE PERMITS.

20. THE CONTRACTOR SHALL REVIEW THE TERMS AND CONDITIONS OF A SITE PLAN PERMIT FROM THE CITY OF PORTLAND, WHICH WILL BE MADE A PART OF THE CONTRACT BID DOCUMENTS. THE CONTRACTOR WILL BE GOVERNED BY THE ZONING ORDINANCES WHICH ARE AVAILABLE FOR VIEWING AT THE OFFICE OF THE ENGINEER OR THE MUNICIPAL OFFICE.

21. THE CONTRACTOR SHALL RETURNED PERMITS PRIOR TO SUBMITTING A BID FOR THIS PROJECT, AND INCLUDE COSTS AS NECESSARY TO COMPLY WITH THE CONDITIONS OF THESE PERMITS.

22. THE CONTRACTOR SHALL REVIEW THE TERMS AND CONDITIONS OF A SITE PLAN PERMIT FROM THE CITY OF PORTLAND, WHICH WILL BE MADE A PART OF THE CONTRACT BID DOCUMENTS. THE CONTRACTOR WILL BE GOVERNED BY THE ZONING ORDINANCES WHICH ARE AVAILABLE FOR VIEWING AT THE OFFICE OF THE ENGINEER OR THE MUNICIPAL OFFICE.

23. THE CONTRACTOR SHALL RETURNED PERMITS PRIOR TO SUBMITTING A BID FOR THIS PROJECT, AND INCLUDE COSTS AS NECESSARY TO COMPLY WITH THE CONDITIONS OF THESE PERMITS.

24. THE CONTRACTOR SHALL REVIEW THE TERMS AND CONDITIONS OF A SITE PLAN PERMIT FROM THE CITY OF PORTLAND, WHICH WILL BE MADE A PART OF THE CONTRACT BID DOCUMENTS. THE CONTRACTOR WILL BE GOVERNED BY THE ZONING ORDINANCES WHICH ARE AVAILABLE FOR VIEWING AT THE OFFICE OF THE ENGINEER OR THE MUNICIPAL OFFICE.

25. THE CONTRACTOR SHALL RETURNED PERMITS PRIOR TO SUBMITTING A BID FOR THIS PROJECT, AND INCLUDE COSTS AS NECESSARY TO COMPLY WITH THE CONDITIONS OF THESE PERMITS.

26. THE CONTRACTOR SHALL REVIEW THE TERMS AND CONDITIONS OF A SITE PLAN PERMIT FROM THE CITY OF PORTLAND, WHICH WILL BE MADE A PART OF THE CONTRACT BID DOCUMENTS. THE CONTRACTOR WILL BE GOVERNED BY THE ZONING ORDINANCES WHICH ARE AVAILABLE FOR VIEWING AT THE OFFICE OF THE ENGINEER OR THE MUNICIPAL OFFICE.

27. THE CONTRACTOR SHALL RETURNED PERMITS PRIOR TO SUBMITTING A BID FOR THIS PROJECT, AND INCLUDE COSTS AS NECESSARY TO COMPLY WITH THE CONDITIONS OF THESE PERMITS.

28. THE CONTRACTOR SHALL REVIEW THE TERMS AND CONDITIONS OF A SITE PLAN PERMIT FROM THE CITY OF PORTLAND, WHICH WILL BE MADE A PART OF THE CONTRACT BID DOCUMENTS. THE CONTRACTOR WILL BE GOVERNED BY THE ZONING ORDINANCES WHICH ARE AVAILABLE FOR VIEWING AT THE OFFICE OF THE ENGINEER OR THE MUNICIPAL OFFICE.

29. THE CONTRACTOR SHALL RETURNED PERMITS PRIOR TO SUBMITTING A BID FOR THIS PROJECT, AND INCLUDE COSTS AS NECESSARY TO COMPLY WITH THE CONDITIONS OF THESE PERMITS.

30. THE CONTRACTOR SHALL REVIEW THE TERMS AND CONDITIONS OF A SITE PLAN PERMIT FROM THE CITY OF PORTLAND, WHICH WILL BE MADE A PART OF THE CONTRACT BID DOCUMENTS. THE CONTRACTOR WILL BE GOVERNED BY THE ZONING ORDINANCES WHICH ARE AVAILABLE FOR VIEWING AT THE OFFICE OF THE ENGINEER OR THE MUNICIPAL OFFICE.

31. THE CONTRACTOR SHALL RETURNED PERMITS PRIOR TO SUBMITTING A BID FOR THIS PROJECT, AND INCLUDE COSTS AS NECESSARY TO COMPLY WITH THE CONDITIONS OF THESE PERMITS.

32. THE CONTRACTOR SHALL REVIEW THE TERMS AND CONDITIONS OF A SITE PLAN PERMIT FROM THE CITY OF PORTLAND, WHICH WILL BE MADE A PART OF THE CONTRACT BID DOCUMENTS. THE CONTRACTOR WILL BE GOVERNED BY THE ZONING ORDINANCES WHICH ARE AVAILABLE FOR VIEWING AT THE OFFICE OF THE ENGINEER OR THE MUNICIPAL OFFICE.

33. THE CONTRACTOR SHALL RETURNED PERMITS PRIOR TO SUBMITTING A BID FOR THIS PROJECT, AND INCLUDE COSTS AS NECESSARY TO COMPLY WITH THE CONDITIONS OF THESE PERMITS.

34. THE CONTRACTOR SHALL REVIEW THE TERMS AND CONDITIONS OF A SITE PLAN PERMIT FROM THE CITY OF PORTLAND, WHICH WILL BE MADE A PART OF THE CONTRACT BID DOCUMENTS. THE CONTRACTOR WILL BE GOVERNED BY THE ZONING ORDINANCES WHICH ARE AVAILABLE FOR VIEWING AT THE OFFICE OF THE ENGINEER OR THE MUNICIPAL OFFICE.

35. THE CONTRACTOR SHALL RETURNED PERMITS PRIOR TO SUBMITTING A BID FOR THIS PROJECT, AND INCLUDE COSTS AS NECESSARY TO COMPLY WITH THE CONDITIONS OF THESE PERMITS.

Rev	Date	Revision	Issued For	By	U	W
-	-	-	-	-	-	-

EROSION CONTROL NOTES

1. LAND DISTURBING ACTIVITIES SHALL BE ACCOMPLISHED IN A MANNER AND SEQUENCE THAT CAUSES THE LEAST PRACTICAL DISTURBANCE OF THE SITE.
 2. PRIOR TO BEGINNING ANY CLEARING AND DISTURBING ACTIVITIES, THE CONTRACTOR SHALL INSTALL THE PERMETER SILT FENCES AND THE ALL GROUND AREAS GRADED FOR CONSTRUCTION WILL BE GRADED, CONSTRUCTION ENTRANCES.
 3. ALL GROUND AREAS GRADED FOR CONSTRUCTION WILL BE GRADED, CONSTRUCTION ENTRANCES.
 4. PRIOR TO PAVING, THE CONTRACTOR SHALL FLUSH SILT FROM ALL STORM DRAIN LINES. SILT SHALL NOT BE FLUSHED INTO THE MUNICIPAL INFRASTRUCTURE.
 5. ALL CATCH BASINS WITH OUTLET PIPES 15" DIAMETER OR LESS SHALL BE PROVIDED WITH CASCO TRAPS PER DETAIL.
 6. SILT FENCES SHALL BE INSPECTED, REPAIRED AND CLEANED AS NOTED IN THE EROSION CONTROL REPORT.
 7. THE CONTRACTOR SHALL REPAIR AND ADD STONE TO THE CONSTRUCTION WORK AS PLANNED DURING CONSTRUCTION.
 8. SILT REMOVED FROM AROUND WELLS AND BEHIND THE SILT FENCES SHALL BE PLACED ON A TOPSOIL STOCKPILE AND MIXED INTO IT FOR LATER USE IN LANDSCAPING OPERATIONS.
 9. THE MAINTENANCE SCHEDULE FOR THE CATCH BASIN SEDIMENT SUMPS IS AS FOLLOWS: THESE DEVICES SHALL BE INSPECTED IN APRIL AND OCTOBER OF EACH YEAR. ACCUMULATED SEDIMENT SHALL BE REMOVED FROM THE CATCH BASIN WHEN THE DEPTH OF THE SEDIMENT IS GREATER THAN ONE FOOT. THE SEDIMENT WILL BE REMOVED FROM THE SITE BY THE OWNER OR THE CATCH BASIN CLEANING CONTRACTOR AND DISPOSED OF IN ACCORDANCE WITH FEDERAL, STATE AND LOCAL REGULATIONS.
 10. THE CONTRACTOR IS CAUTIONED THAT FAILURE TO COMPLY WITH THE SEQUENCE OF CONSTRUCTION, GRADING, DRAINAGE & EROSION CONTROL PLAN, AND OTHER PERMITS MAY RESULT IN MONETARY PENALTIES. THE CONTRACTOR SHALL BE ASSESSED ALL SUCH PENALTIES AT NO COST TO THE OWNER OR PERMITTEE.
 11. ALL NON-PAVED AREAS DISTURBED DURING CONSTRUCTION SHALL BE LOADED AND SEED, UNLESS OTHERWISE DIRECTED BY THE OWNER.

GRADING AND DRAINAGE NOTES

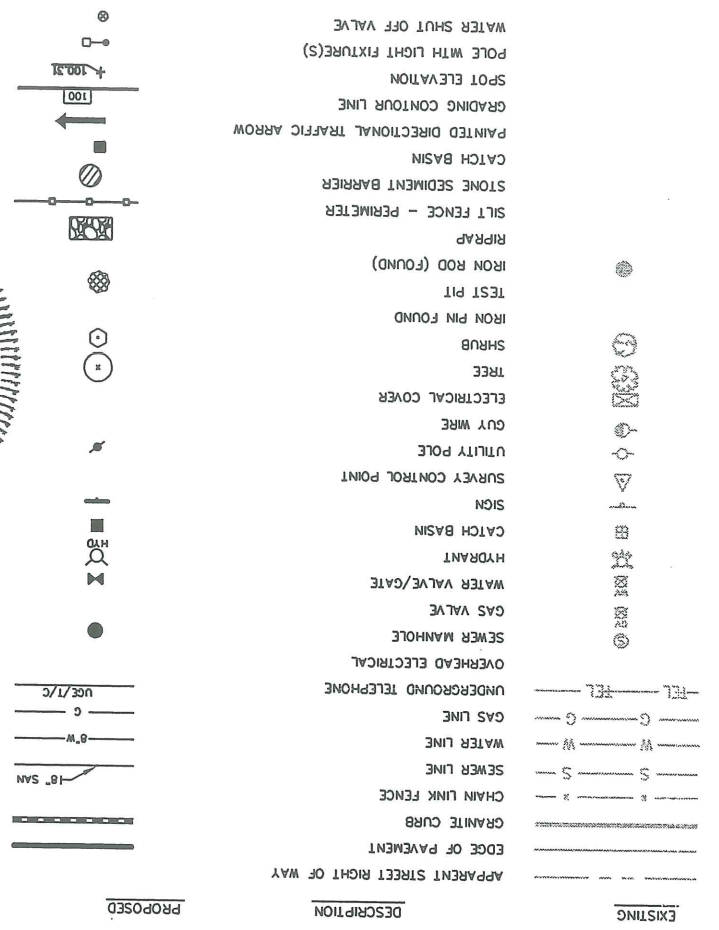
1. UNLESS OTHERWISE NOTED, ALL STORM DRAIN PIPE SHALL BE IN ACCORDANCE WITH MOST SPECIFICATIONS SECTION 600-1-1 PIPE CUTTERS AND STORM DRAINS. LATEST REVISION WITH THE EXCEPTION BE IN ACCORDANCE WITH THE EXCEPTED.
 2. TOPSOIL STRIPPED IN AREAS OF CONSTRUCTION THAT IS SUITABLE FOR REUSE AS LOAM SHALL BE STOCKPILED ON SITE AT A LOCATION TO BE DESIGNATED BY THE OWNER. UNDESIRABLE SOIL SHALL BE SEPARATED, REMOVED AND DISPOSED OF AT AN APPROVED DISPOSAL LOCATION OFF SITE.
 3. THE CONTRACTOR SHALL ANTICIPATE THAT GROUNDWATER WILL BE ENCOUNTERED DURING CONSTRUCTION AND SHALL INCLUDE SUFFICIENT EROSION CONTROL MEASURES TO PROTECT AGAINST GROUNDWATER RISES.
 4. THE LOCATION OF THE PROPOSED OVERHEAD AND UNDERGROUND ELECTRICAL SERVICE IS APPROXIMATE AND THE CONTRACTOR SHALL COORDINATE THE EXACT LOCATION WITH CENTRAL MAINE POWER COMPANY AND OTHER SERVICING UTILITY COMPANIES.
 5. ALL SEWER UTILITY MATERIALS AND INSTALLATION METHODS SHALL CONFORM TO CITY OF PORTLAND DEPARTMENT OF PUBLIC WORKS STANDARDS AS APPROPRIATE.
 6. MAINTENANCE OF EROSION CONTROL MEASURES IS OF PARAMOUNT IMPORTANCE TO THE OWNER AND THE CONTRACTOR IS RESPONSIBLE FOR COMPLYING WITH ALL EROSION CONTROL MEASURES SHOWN ON THE PLANS. ADDITIONAL EROSION CONTROL MEASURES SHALL BE INSTALLED IF DEEMED NECESSARY BY ON-SITE INSPECTIONS OF THE OWNER OR THEIR REPRESENTATIVES AT NO ADDITIONAL COST TO THE OWNER.
 7. ALL MATERIAL SCHEDULES SHOWN ON THE PLANS ARE FOR GENERAL INFORMATION ONLY. THE CONTRACTOR SHALL PREPARE HIS OWN MATERIAL SCHEDULES BASED UPON HIS PLAN REVIEW. ALL SCHEDULES SHALL BE PERIODICALLY CHECKED BY THE CONTRACTOR PRIOR TO ORDERING MATERIALS OR PERFORMANCE WORK.
 8. THE CONTRACTOR SHALL RETURNED PERMITS PRIOR TO SUBMITTING A BID FOR THIS PROJECT, AND INCLUDE COSTS AS NECESSARY TO COMPLY WITH THE CONDITIONS OF THESE PERMITS.
 9. THE CONTRACTOR SHALL REVIEW THE TERMS AND CONDITIONS OF A SITE PLAN PERMIT FROM THE CITY OF PORTLAND, WHICH WILL BE MADE A PART OF THE CONTRACT BID DOCUMENTS. THE CONTRACTOR WILL BE GOVERNED BY THE ZONING ORDINANCES WHICH ARE AVAILABLE FOR VIEWING AT THE OFFICE OF THE ENGINEER OR THE MUNICIPAL OFFICE.
 10. THE CONTRACTOR SHALL RETURNED PERMITS PRIOR TO SUBMITTING A BID FOR THIS PROJECT, AND INCLUDE COSTS AS NECESSARY TO COMPLY WITH THE CONDITIONS OF THESE PERMITS.
 11. THE CONTRACTOR SHALL REVIEW THE TERMS AND CONDITIONS OF A SITE PLAN PERMIT FROM THE CITY OF PORTLAND, WHICH WILL BE MADE A PART OF THE CONTRACT BID DOCUMENTS. THE CONTRACTOR WILL BE GOVERNED BY THE ZONING ORDINANCES WHICH ARE AVAILABLE FOR VIEWING AT THE OFFICE OF THE ENGINEER OR THE MUNICIPAL OFFICE.
 12. THE CONTRACTOR SHALL RETURNED PERMITS PRIOR TO SUBMITTING A BID FOR THIS PROJECT, AND INCLUDE COSTS AS NECESSARY TO COMPLY WITH THE CONDITIONS OF THESE PERMITS.
 13. THE CONTRACTOR SHALL REVIEW THE TERMS AND CONDITIONS OF A SITE PLAN PERMIT FROM THE CITY OF PORTLAND, WHICH WILL BE MADE A PART OF THE CONTRACT BID DOCUMENTS. THE CONTRACTOR WILL BE GOVERNED BY THE ZONING ORDINANCES WHICH ARE AVAILABLE FOR VIEWING AT THE OFFICE OF THE ENGINEER OR THE MUNICIPAL OFFICE.
 14. THE CONTRACTOR SHALL RETURNED PERMITS PRIOR TO SUBMITTING A BID FOR THIS PROJECT, AND INCLUDE COSTS AS NECESSARY TO COMPLY WITH THE CONDITIONS OF THESE PERMITS.
 15. THE CONTRACTOR SHALL REVIEW THE TERMS AND CONDITIONS OF A SITE PLAN PERMIT FROM THE CITY OF PORTLAND, WHICH WILL BE MADE A PART OF THE CONTRACT BID DOCUMENTS. THE CONTRACTOR WILL BE GOVERNED BY THE ZONING ORDINANCES WHICH ARE AVAILABLE FOR VIEWING AT THE OFFICE OF THE ENGINEER OR THE MUNICIPAL OFFICE.
 16. THE CONTRACTOR SHALL RETURNED PERMITS PRIOR TO SUBMITTING A BID FOR THIS PROJECT, AND INCLUDE COSTS AS NECESSARY TO COMPLY WITH THE CONDITIONS OF THESE PERMITS.
 17. THE CONTRACTOR SHALL REVIEW THE TERMS AND CONDITIONS OF A SITE PLAN PERMIT FROM THE CITY OF PORTLAND, WHICH WILL BE MADE A PART OF THE CONTRACT BID DOCUMENTS. THE CONTRACTOR WILL BE GOVERNED BY THE ZONING ORDINANCES WHICH ARE AVAILABLE FOR VIEWING AT THE OFFICE OF THE ENGINEER OR THE MUNICIPAL OFFICE.
 18. THE CONTRACTOR SHALL RETURNED PERMITS PRIOR TO SUBMITTING A BID FOR THIS PROJECT, AND INCLUDE COSTS AS NECESSARY TO COMPLY WITH THE CONDITIONS OF THESE PERMITS.
 19. THE CONTRACTOR SHALL REVIEW THE TERMS AND CONDITIONS OF A SITE PLAN PERMIT FROM THE CITY OF PORTLAND, WHICH WILL BE MADE A PART OF THE CONTRACT BID DOCUMENTS. THE CONTRACTOR WILL BE GOVERNED BY THE ZONING ORDINANCES WHICH ARE AVAILABLE FOR VIEWING AT THE OFFICE OF THE ENGINEER OR THE MUNICIPAL OFFICE.
 20. THE CONTRACTOR SHALL RETURNED PERMITS PRIOR TO SUBMITTING A BID FOR THIS PROJECT, AND INCLUDE COSTS AS NECESSARY TO COMPLY WITH THE CONDITIONS OF THESE PERMITS.
 21. THE CONTRACTOR SHALL REVIEW THE TERMS AND CONDITIONS OF A SITE PLAN PERMIT FROM THE CITY OF PORTLAND, WHICH WILL BE MADE A PART OF THE CONTRACT BID DOCUMENTS. THE CONTRACTOR WILL BE GOVERNED BY THE ZONING ORDINANCES WHICH ARE AVAILABLE FOR VIEWING AT THE OFFICE OF THE ENGINEER OR THE MUNICIPAL OFFICE.
 22. THE CONTRACTOR SHALL RETURNED PERMITS PRIOR TO SUBMITTING A BID FOR THIS PROJECT, AND INCLUDE COSTS AS NECESSARY TO COMPLY WITH THE CONDITIONS OF THESE PERMITS.
 23. THE CONTRACTOR SHALL REVIEW THE TERMS AND CONDITIONS OF A SITE PLAN PERMIT FROM THE CITY OF PORTLAND, WHICH WILL BE MADE A PART OF THE CONTRACT BID DOCUMENTS. THE CONTRACTOR WILL BE GOVERNED BY THE ZONING ORDINANCES WHICH ARE AVAILABLE FOR VIEWING AT THE OFFICE OF THE ENGINEER OR THE MUNICIPAL OFFICE.
 24. THE CONTRACTOR SHALL RETURNED PERMITS PRIOR TO SUBMITTING A BID FOR THIS PROJECT, AND INCLUDE COSTS AS NECESSARY TO COMPLY WITH THE CONDITIONS OF THESE PERMITS.
 25. THE CONTRACTOR SHALL REVIEW THE TERMS AND CONDITIONS OF A SITE PLAN PERMIT FROM THE CITY OF PORTLAND, WHICH WILL BE MADE A PART OF THE CONTRACT BID DOCUMENTS. THE CONTRACTOR WILL BE GOVERNED BY THE ZONING ORDINANCES WHICH ARE AVAILABLE FOR VIEWING AT THE OFFICE OF THE ENGINEER OR THE MUNICIPAL OFFICE.
 26. THE CONTRACTOR SHALL RETURNED PERMITS PRIOR TO SUBMITTING A BID FOR THIS PROJECT, AND INCLUDE COSTS AS NECESSARY TO COMPLY WITH THE CONDITIONS OF THESE PERMITS.
 27. THE CONTRACTOR SHALL REVIEW THE TERMS AND CONDITIONS OF A SITE PLAN PERMIT FROM THE CITY OF PORTLAND, WHICH WILL BE MADE A PART OF THE CONTRACT BID DOCUMENTS. THE CONTRACTOR WILL BE GOVERNED BY THE ZONING ORDINANCES WHICH ARE AVAILABLE FOR VIEWING AT THE OFFICE OF THE ENGINEER OR THE MUNICIPAL OFFICE.
 28. THE CONTRACTOR SHALL RETURNED PERMITS PRIOR TO SUBMITTING A BID FOR THIS PROJECT, AND INCLUDE COSTS AS NECESSARY TO COMPLY WITH THE CONDITIONS OF THESE PERMITS.
 29. THE CONTRACTOR SHALL REVIEW THE TERMS AND CONDITIONS OF A SITE PLAN PERMIT FROM THE CITY OF PORTLAND, WHICH WILL BE MADE A PART OF THE CONTRACT BID DOCUMENTS. THE CONTRACTOR WILL BE GOVERNED BY THE ZONING ORDINANCES WHICH ARE AVAILABLE FOR VIEWING AT THE OFFICE OF THE ENGINEER OR THE MUNICIPAL OFFICE.
 30. THE CONTRACTOR SHALL RETURNED PERMITS PRIOR TO SUBMITTING A BID FOR THIS PROJECT, AND INCLUDE COSTS AS NECESSARY TO COMPLY WITH THE CONDITIONS OF THESE PERMITS.
 31. THE CONTRACTOR SHALL REVIEW THE TERMS AND CONDITIONS OF A SITE PLAN PERMIT FROM THE CITY OF PORTLAND, WHICH WILL BE MADE A PART OF THE CONTRACT BID DOCUMENTS. THE CONTRACTOR WILL BE GOVERNED BY THE ZONING ORDINANCES WHICH ARE AVAILABLE FOR VIEWING AT THE OFFICE OF THE ENGINEER OR THE MUNICIPAL OFFICE.
 32. THE CONTRACTOR SHALL RETURNED PERMITS PRIOR TO SUBMITTING A BID FOR THIS PROJECT, AND INCLUDE COSTS AS NECESSARY TO COMPLY WITH THE CONDITIONS OF THESE PERMITS.
 33. THE CONTRACTOR SHALL REVIEW THE TERMS AND CONDITIONS OF A SITE PLAN PERMIT FROM THE CITY OF PORTLAND, WHICH WILL BE MADE A PART OF THE CONTRACT BID DOCUMENTS. THE CONTRACTOR WILL BE GOVERNED BY THE ZONING ORDINANCES WHICH ARE AVAILABLE FOR VIEWING AT THE OFFICE OF THE ENGINEER OR THE MUNICIPAL OFFICE.
 34. THE CONTRACTOR SHALL RETURNED PERMITS PRIOR TO SUBMITTING A BID FOR THIS PROJECT, AND INCLUDE COSTS AS NECESSARY TO COMPLY WITH THE CONDITIONS OF THESE PERMITS.
 35. THE CONTRACTOR SHALL REVIEW THE TERMS AND CONDITIONS OF A SITE PLAN PERMIT FROM THE CITY OF PORTLAND, WHICH WILL BE MADE A PART OF THE CONTRACT BID DOCUMENTS. THE CONTRACTOR WILL BE GOVERNED BY THE ZONING ORDINANCES WHICH ARE AVAILABLE FOR VIEWING AT THE OFFICE OF THE ENGINEER OR THE MUNICIPAL OFFICE.

PERMITS

TYPE OF PERMIT
 GOVERNING BODY
 STATUS

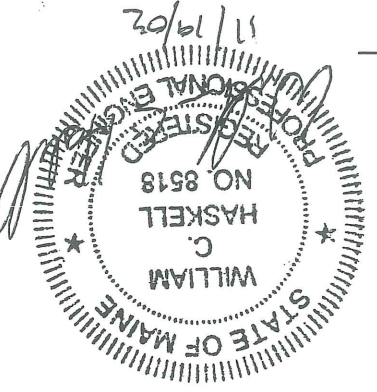
SUBMITTED 11/19/02
 CITY OF PORTLAND
 PLANNING DEPARTMENT

LEGEND



UTILITIES

PORTLAND PUBLIC WORKS
 55 PORTLAND STREET
 PORTLAND, MAINE 04101
 ATTN: FRANK BRANDELY
 (207) 874-8832
 WATER:
 PORTLAND WATER DISTRICT
 223 DOUGLASS STREET
 P.O. BOX 3553
 PORTLAND, MAINE 04104-3553
 (207) 774-5961 EXT. 3041
 ATTN: DAVID COFFIN
 ELECTRIC:
 CENTRAL MAINE POWER
 162 CANCO ROAD
 PORTLAND, MAINE 04240
 (207) 828-2882
 ATTN: PAUL DUPEPPE
 VERIZON
 5 DAVIS FARM ROAD
 PORTLAND, MAINE 04103
 (207) 797-1842
 ATTN: SUE SARBETITE
 NATURAL GAS:
 NORTHERN UTILITIES
 073 FOREST AVE.
 PORTLAND, MAINE 04103
 (207) 797-8002 EXT. 6220
 ATTN: MIKE SMITH
 1-888-DIG-SAFE
 CALL BEFORE YOU DIG

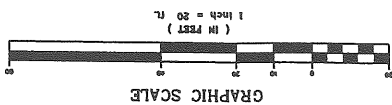


NOTE: THIS PLAN SET IS ISSUED FOR PERMITTING PURPOSES ONLY AND SHALL NOT BE USED FOR CONSTRUCTION.

Drawing No. **C001**

INDEX

0001	COVER SHEET, GENERAL NOTES & LEGEND
0101	EXISTING CONDITIONS PLAN
0102	DEMOLITION PLAN
0103	SITE LAYOUT PLAN
0104	UTILITY PLAN
0201	GRADING, DRAINAGE & EROSION CONTROL PLAN
0202	UTILITY & STORM DRAIN DETAILS
0203	LANDSCAPING PLAN
0204	MISCELLANEOUS DETAILS
0205	LANDSCAPING PLAN



REV.	DATE	STATUS	BY	CHKD	APPD

DATE: MARCH 19, 2002
 APPROVED BY: KMM
 CHECKED BY:
 DRAWN BY: KMM

JKL LAND SURVEYING
 (A DIVISION OF MEASURE UP, INC.)
 1000 WASHINGTON ST. SUITE 200
 PORTLAND, MAINE 04103
 TEL: 603-761-1234

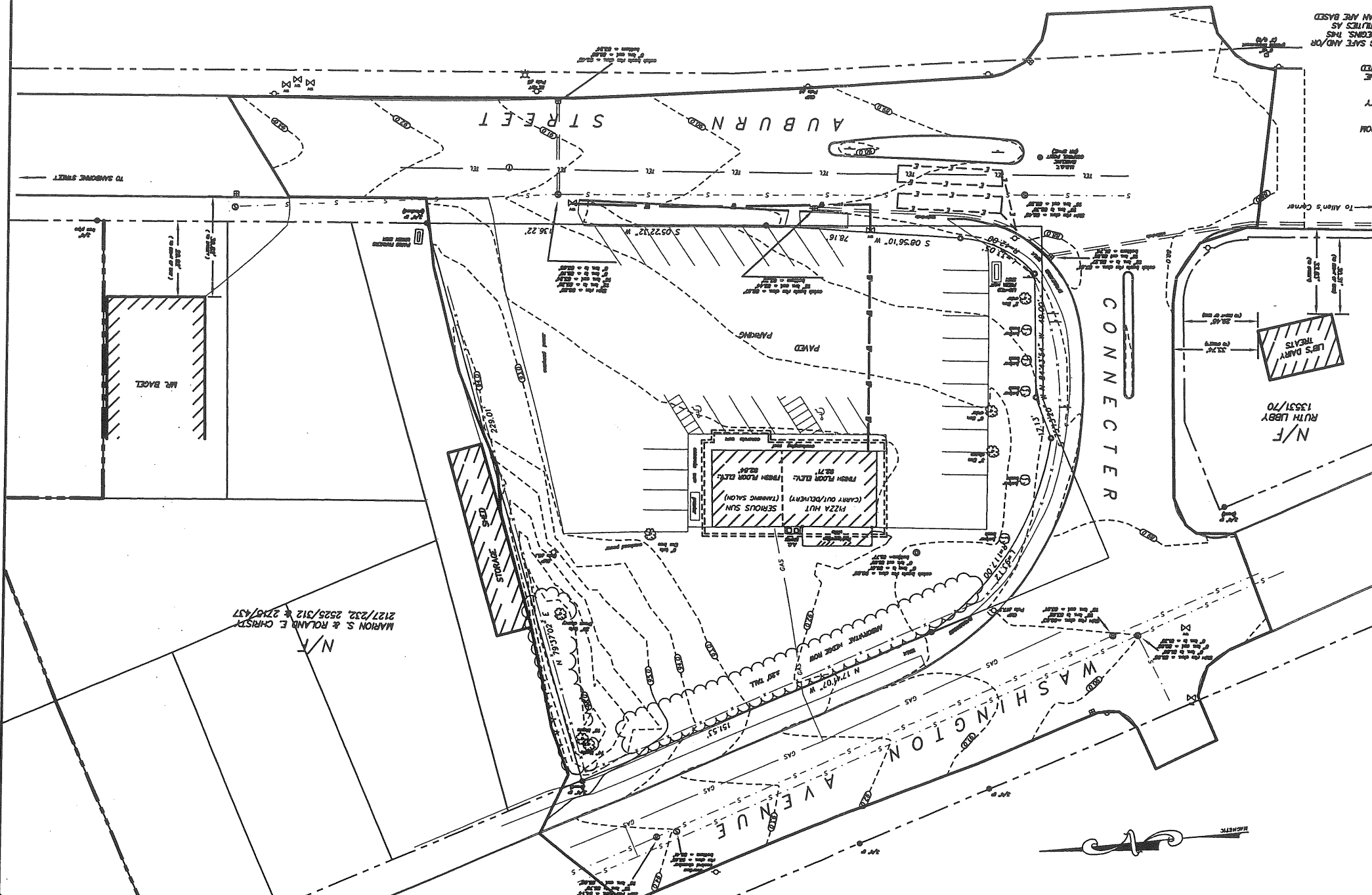
PLATZ ASSOCIATES
 2 GREAT FALLS PLAZA
 AUBURN, MAINE 04224

BATH SAVINGS BANK - PORTLAND
 42 AUBURN STREET -- PORTLAND, MAINE
 PERIMETER BOUNDARY SURVEY &
 SITE PLAN
 DRAWING NAME: 02010SP.DWG
 PROJECT NO.: 02010SP-64-687-CD1
 SCALE: HOR. 1"=20'
 VERT. 1"=20'
 SHEET 1 of 1

- NOTES:**
- 1) BEARINGS ARE REFERENCED TO MAGNETIC NORTH AS TAKEN FROM THE DEED AS REFERRED TO IN REFERENCE 8 ABOVE.
 - 2) ALL DEED REFERENCES ARE MADE TO THE OMBELAND COUNTY REGISTER OF DEEDS - FOUNTAIN STREET, PORTLAND, MAINE.
 - 3) JOHN SMITH AS MENTIONED IN DEED BOOK 689, PAGE 210 DATED OCTOBER 1, 1800.
 - 4) ALL UNDERGROUND UTILITIES ARE TO BE FIELD VERIFIED BY DIG SAFE AND/OR ON MARKINGS MADE BY OTHERS.

- REFERENCES:**
- 1) PLAN OF HIGHLAND PARK RECORDED IN THE OMBELAND COUNTY REGISTER OF DEEDS IN PLAN BOOK 8, PAGE 138.
 - 2) PLAN OF LAND OWNED BY ROBERT D. & HELEN C. WILCOX AND RECORDED IN PLAN BOOK 34, PAGE 8. WASHINGTON AVE. AND AUBURN ST. DATED OCT. 1, 1848.
 - 3) STATE OF MAINE DEPARTMENT OF TRANSPORTATION RIGHT OF WAY MAP - D.O.T. FILE 3-280 DATED SEPT. 1978.
 - 4) CITY OF PORTLAND ASSESSORS PLAN NO. 375 - LOT 2.
 - 5) DEED OF RECORD, BARBARA ESPOSTO TO KENNEDY, LLC BOOK 15233, PAGE 278 DATED SEPT. 20, 2000.
 - 6) SEE NOTICE OF LAYOUT AND TAKING BY THE STATE OF MAINE IN BOOK 4989, PAGE 185-182.

- LEGEND:**
- APPARENT STREET RIGHT OF WAY
 - EDGE OF PAVEMENT
 - GRANITE CURB
 - CHAIN LINK FENCE
 - SEWER LINE
 - WATER LINE
 - GAS LINE
 - UNDERGROUND TELEPHONE
 - TEL.
 - TEL.
 - OVERHEAD ELECTRICAL
 - SEWER MANHOLE
 - GAS VALVE
 - WATER VALVE/GATE
 - HYDRANT
 - CATCH BASIN
 - SIGN
 - SURVEY CONTROL POINT
 - UTILITY POLE
 - GUY WIRE
 - ELECTRICAL COVER
 - TREE
 - SHRUB
 - IRON PIN FOUND



MARION S. & ROLAND E. CHRISTY
 2127/232, 2525/312 & 2710/437

GP
 Gorrell-Palmer Consulting Engineers, Inc.
 PO Box 1237 Traffic and Civil Engineering Services
 15 Shaker Road FAX: 207-657-6912
 207-657-6910
 E-Mail: mail@gorrellpalmer.com
 Gray, ME 04039

C101

SHEET

ISSUE DATE

1 NOV 02

SCALE 1" = 20'

DESIGNED BY SGB

CHECKED BY WCH

DATE NOV 02

PROJECT NO. 587.1

PROJECT NAME DEMOLITION PLAN

PROJECT LOCATION

PROJECT OWNER

PROJECT ARCHITECT

PROJECT ENGINEER

PROJECT CONTRACTOR

PROJECT SUBMITTER

PROJECT DATE

PROJECT STATUS

PROJECT NOTES

PROJECT SCALE

PROJECT SHEET

PROJECT TOTAL

PROJECT DATE

PROJECT STATUS

PROJECT NOTES

PROJECT SCALE

PROJECT SHEET

PROJECT TOTAL

PROJECT DATE

PROJECT STATUS

PROJECT NOTES

PROJECT SCALE

PROJECT SHEET

PROJECT TOTAL

PROJECT DATE

PROJECT STATUS

PROJECT NOTES

PROJECT SCALE

PROJECT SHEET

PROJECT TOTAL

PROJECT DATE

PROJECT STATUS

PROJECT NOTES

PROJECT SCALE

PROJECT SHEET

PROJECT TOTAL

PROJECT DATE

PROJECT STATUS

PROJECT NOTES

PROJECT SCALE

PROJECT SHEET

PROJECT TOTAL

PROJECT DATE

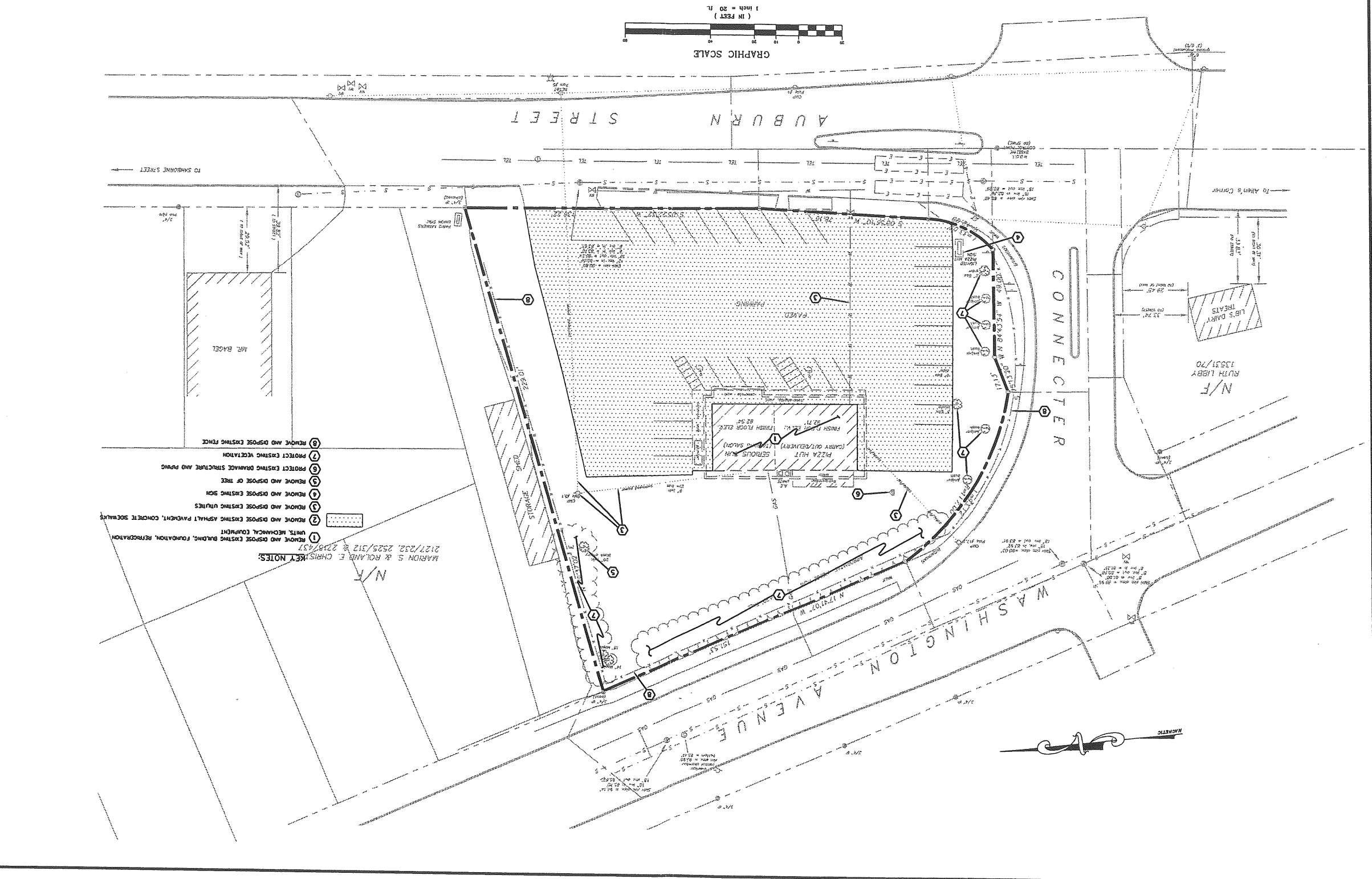
PROJECT STATUS

PROJECT NOTES

PROJECT SCALE

PROJECT SHEET

PROJECT TOTAL



- KEY NOTES:
 HARRISON S. & ROLAND E. CHRIS.
 2127/232, 2525/312 & 2238/457
- 1 REMOVE AND DISPOSE EXISTING BUILDING, FOUNDATION, REFRIGERATION UNITS, MECHANICAL EQUIPMENT
 - 2 REMOVE AND DISPOSE EXISTING ASPHALT PAVEMENT, CONCRETE SIDEWALK
 - 3 REMOVE AND DISPOSE EXISTING UTILITIES
 - 4 REMOVE AND DISPOSE EXISTING SIGN
 - 5 REMOVE AND DISPOSE EXISTING TREE
 - 6 REMOVE AND DISPOSE OF TREE
 - 7 PROTECT EXISTING DAMAGED STRUCTURE AND PAVING
 - 8 REMOVE AND DISPOSE EXISTING FENCE

Bath Savings
 Institution
 Portland, Maine

PLATZ ASSOCIATES
 Architects - Engineers
 Construction Managers
 Two Great Falls Plaza, Auburn, Maine 04210
 Tel: 207-784-2941
 Fax: 207-784-3856

GP
 Gorill-Palmer Consulting Engineers, Inc.
 PO Box 1237
 Traffic and Civil Engineering Services
 15 Shaker Road
 Gray, ME 04039
 Fax: 207-657-6912
 E-Mail: mlp@gorillpalmer.com

C102

SHEET TITLE

1 NOV 02

SCALE 1" = 20'

DESIGNED BY SGB WCH

PROJECT NO. 22003

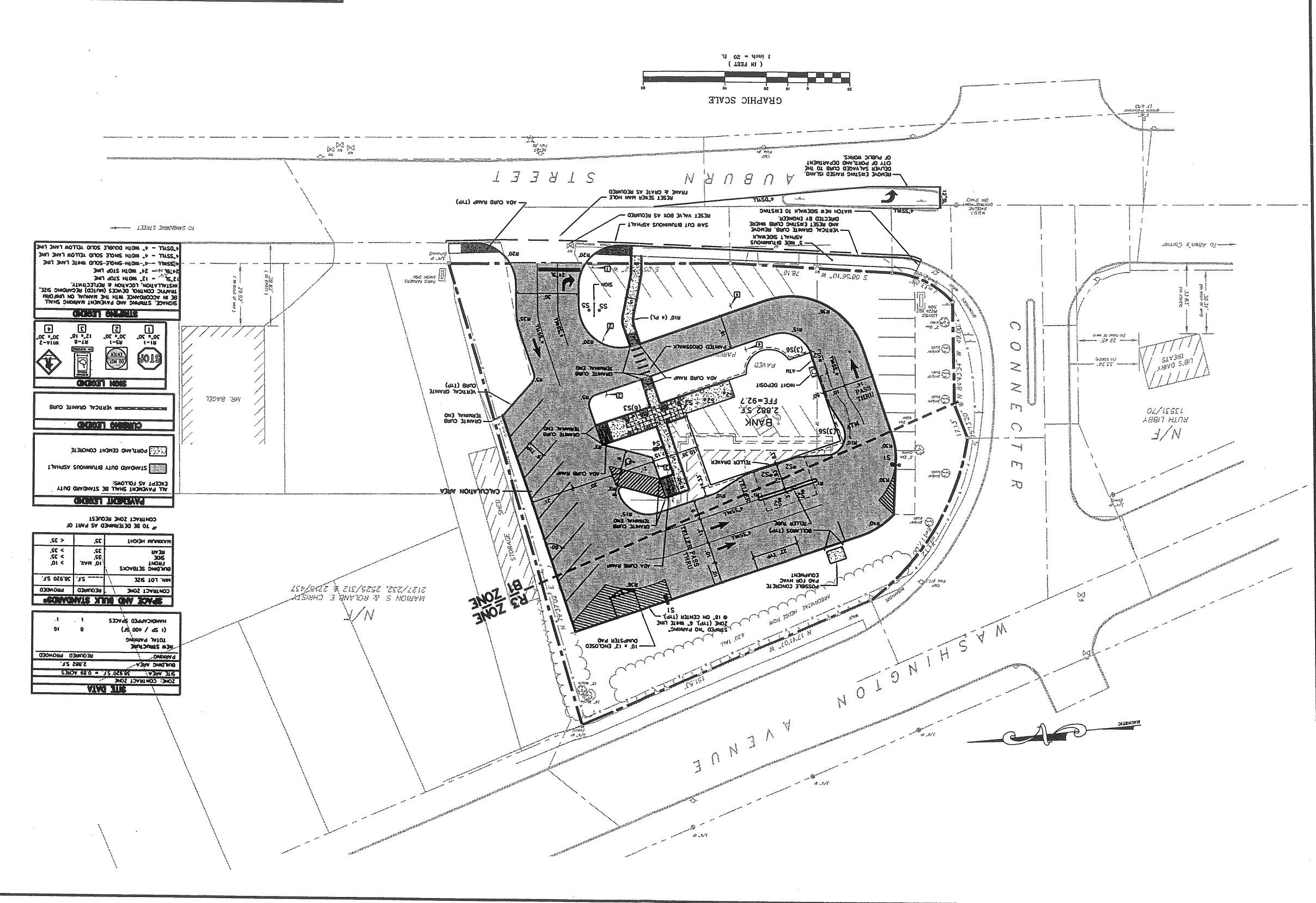
SITE LAYOUT PLAN

- DRAWING STATUS
- OFFICE REVIEW
 - CLIENT REVIEW
 - REVISION NUMBER
 - CONTRACT DRAWING
 - CONSTRUCTION
- REVISIONS: A drawing shall be prepared as a separate sheet and shall be filed with the original drawing.

DATE

Bath Savings Institution
 Portland, Maine

PLATZ ASSOCIATES
 Architects - Engineers
 Construction Managers
 Tel: 207-784-2941
 Fax: 207-784-3856
 Two Great Falls Plaza, Auburn, Maine 04210



PAVEMENT LEGEND
 ALL PAVEMENT SHALL BE STANDARD DUTY EXCEPT AS FOLLOWS:
 STANDARD DUTY BITUMINOUS ASPHALT
 PORTLAND CEMENT CONCRETE

SIGN LEGEND
 STOP
 NO PARKING
 ONE WAY
 TRAFFIC CONTROL DEVICES (AHEAD) RECOMMEND 525. INSTALLATION LOCATION & HEIGHT SHALL BE IN ACCORDANCE WITH THE MANUAL ON UNIFORM TRAFFIC CONTROL DEVICES (MUTCD) RECOMMEND 525.

CURB LEGEND
 VERTICAL CURVE CURE

SPACE AND BLK STANDARDS
 TO BE DETERMINED AS PART OF CONTRACT ZONE REQUEST

MAXIMUM HEIGHT	35'	< 35'
REAR SETBACK	35'	> 35'
FRONT SETBACK	10' MAX.	> 10'
MIN. LOT SIZE	57,380 SQ. FT.	38,920 SQ. FT.

SITE DATA

ZONE: CONTRACT ZONE	RECORDED	PROVIDED
BUILDING AREA	2,082 S.F.	
SITE AREA	38,920 S.F. = 0.89 ACRES	
NEW STRUCTURE	RECORDED	PROVIDED
TOTAL PARKING	16	
HANDICAPPED SPACES	1	

MARION S & ROSEANNE E CHRISTY
 2127/232, 2525/312 & 2249/437

GP Gorrill-Palmer Consulting Engineers, Inc.
 P.O. Box 1237 Traffic and Civil Engineering Services
 15 Shaker Road FAX: 207-657-6912
 207-657-6910
 E-Mail: mobo@gorrillpalmer.com
 Gorrill-Palmer Consulting Engineers, Inc.
 G.P. MC 04039

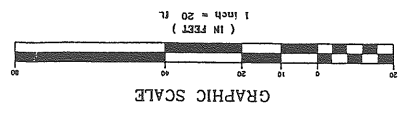
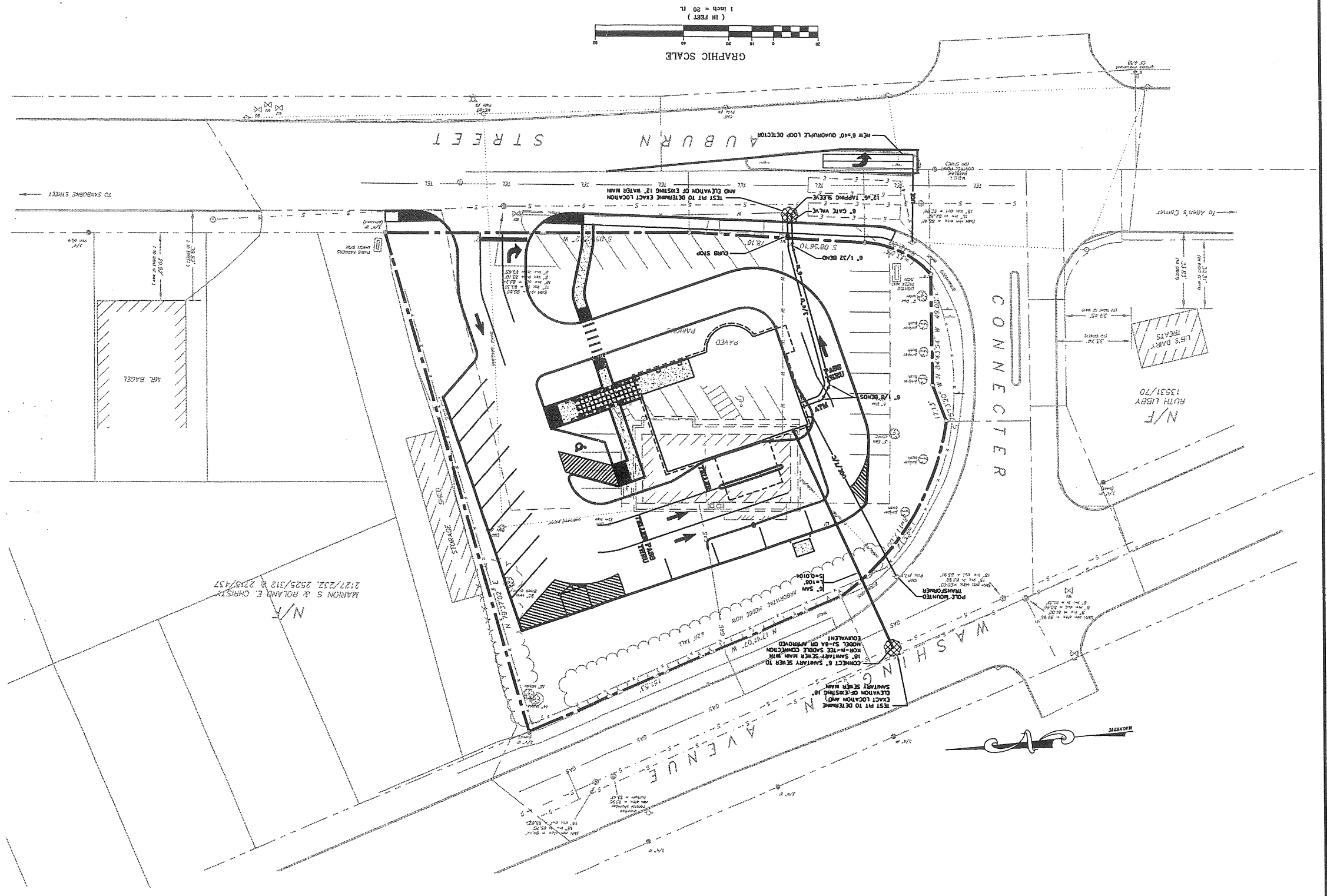
C103

DATE: 1 NOV 02
 ORIGINAL DATE: 1 NOV 02
 SCALE: 1" = 20'
 DRAWN BY: SGB
 CHECKED BY: WCH
 JOB NO.: 22003
 JOB NO. NO.: 587.1
 SHEET TITLE: UTILITY PLAN


CONTRACT STAGE:
 OFFICE REVIEW
 CLIENT REVIEW
 PERMIT REVIEW
 CONTRACT DRAWING
 CONSTRUCTION

Bath Savings Institution
 Portland, Maine

PLATZ ASSOCIATES
 Architects - Engineers
 Construction Managers
 Two Great Falls Plaza, Auburn, Maine 04210
 Tel: 207-784-3941
 Fax: 207-784-3956



MARION S & ROLAND E. CHRISTY
 2177/252, 2525/312 & 2178/437


Gorrill-Palmer Consulting Engineers, Inc.
 P.O. Box 1237
 15 Shaker Road
 Troy, ME 04039
 Traffic and Civil Engineering Services
 207-657-6912 FAX: 207-657-6912
 E-Mail: mabo@gorrillpalmer.com

C104

SHEET
 1 NOV 02
 SCALE 1" = 20'
 DESIGNED BY SGB
 CHECKED BY WCH
 JOB NO. 22003
 JOB NO. 587.1
GRADING & DRAINAGE PLAN

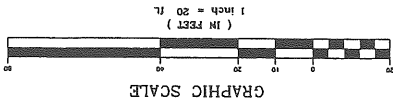
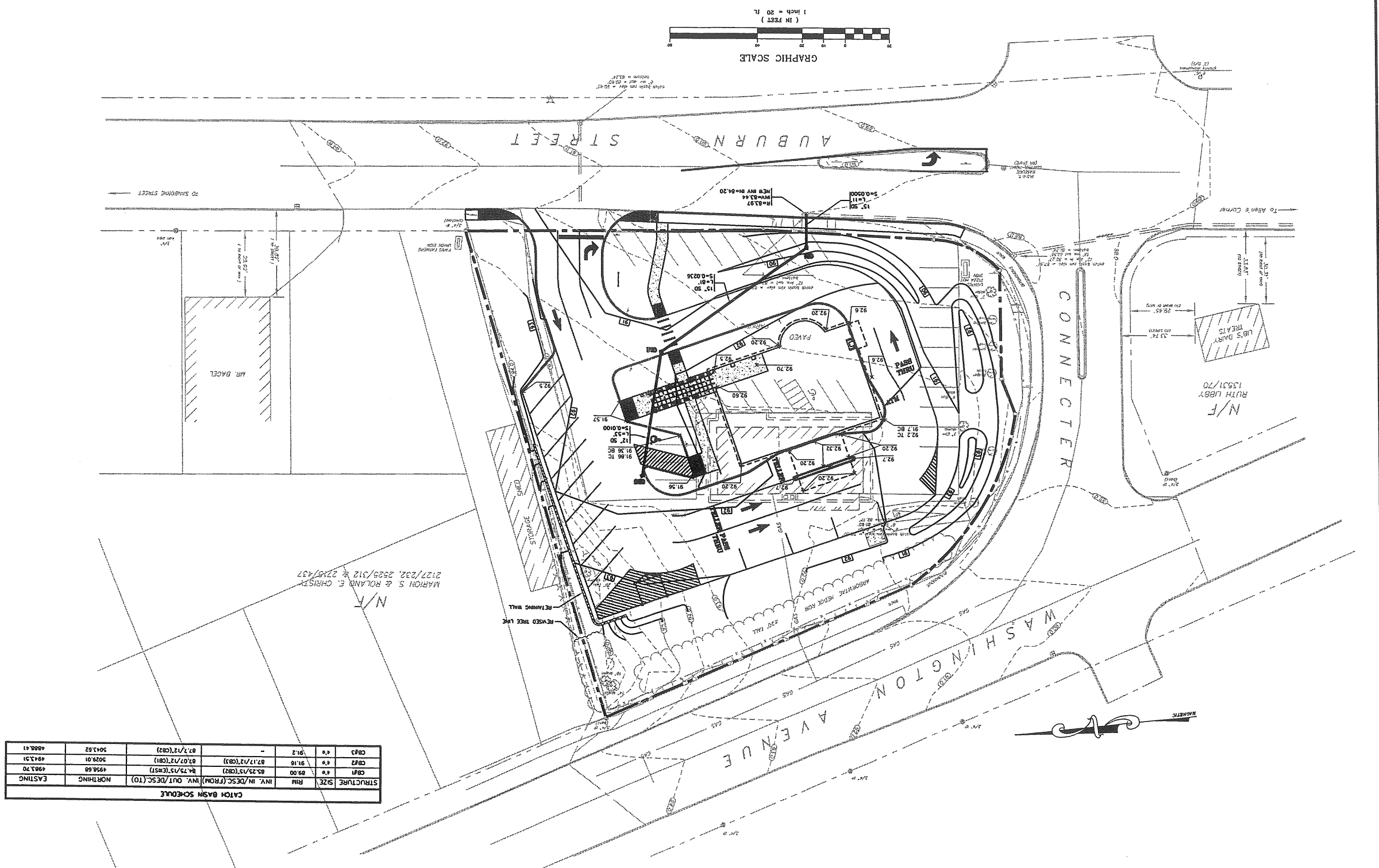
CHANGING STATUS
 OFFICE REVIEW
 DESIGN REVIEW
 CONSTRUCTION REVIEW
 NO SET
 CONTRACT CHANGING
 CONSTRUCTION

Bath Savings Institution
 Portland, Maine

PLATZ ASSOCIATES
 Architects - Engineers
 Construction Managers
 Tel 207-784-3941
 Fax 207-784-3956
 Two Great Falls Plaza, Auburn, Maine 04210

CATON BASIN SCHEDULE

STRUCTURE	SIZE	RIN	INV. IN/DESC. (FROM)	INV. OUT/DESC. (TO)	NORTHING	EASTING
CBF3	6" x 6"	91.2	87.17/17 (CB3)	87.17/17 (CB2)	5043.62	4988.41
CBF2	6" x 6"	91.6	87.17/17 (CB1)	87.07/17 (CB1)	5029.01	4943.31
CBF1	6" x 6"	89.00	85.25/15 (CB2)	84.75/15 (CB1)	4954.68	4983.70
			INV. IN/DESC. (FROM)	INV. OUT/DESC. (TO)		



MARION S. & ROLAND E. CHRISTY
 2127/232, 2529/312 & 2728/437
 N/F

N/F
 RUTH LEBBY
 1530/170
 LIB'S DARY
 TREATS

C101

SHEET

18 NOV 02
REVISION DATE

7 NOV 02
CONTRACT DATE

1" = 20'-0"
SCALE

SLS
CHECKED BY

22003
JOB NO.

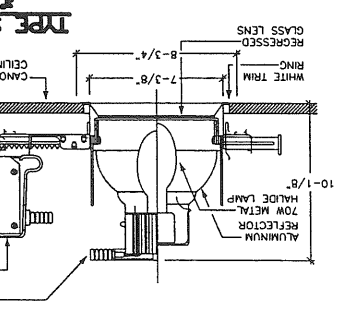
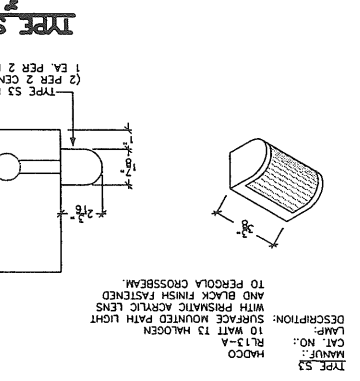
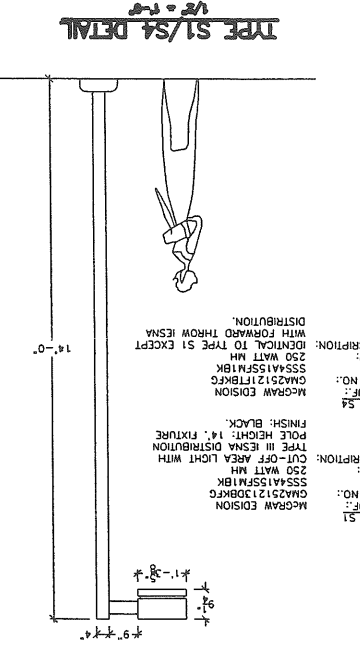
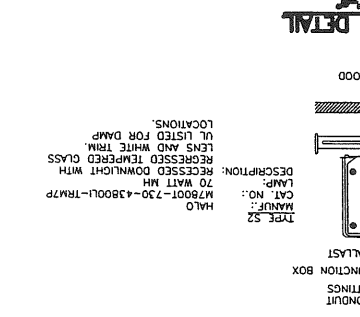
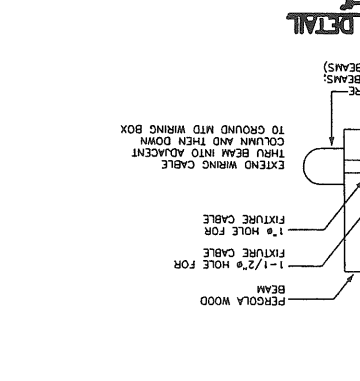
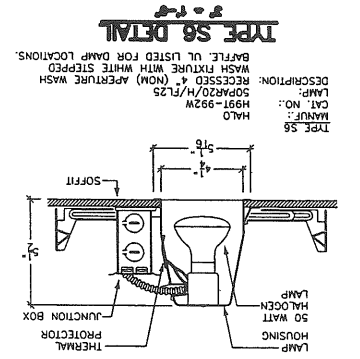
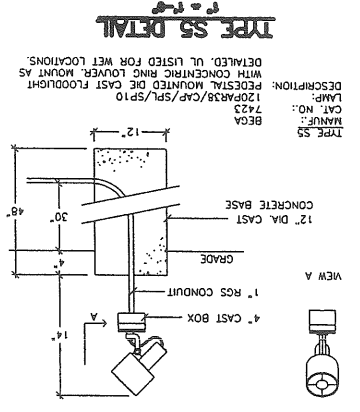
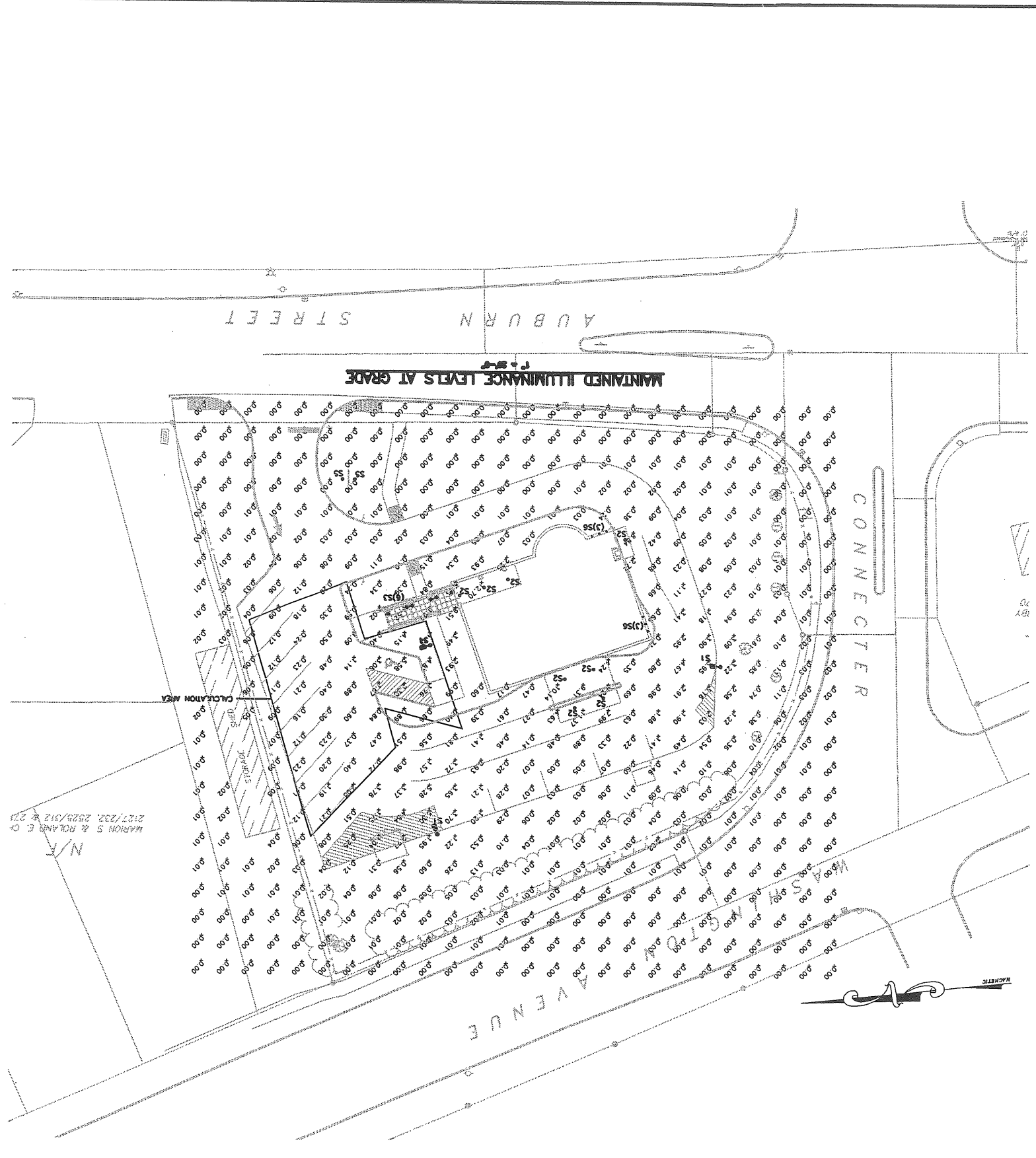
PROPOSED
SITE PLAN
SHEET TITLE

DRAWING STATUS

OFFICE REVIEW
 CLIENT REVIEW
 PERMIT REVIEW
 CONTRACT DRAWING
 CONSTRUCTION

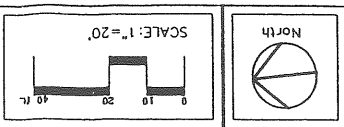
Bath Savings Institution
Portland, Maine

PLATZ ASSOCIATES
Architects - Engineers
Construction Managers
Two Great Falls Plaza, Auburn, Maine 04210
Tel: 207-784-2941
Fax: 207-784-3856



Gorrill-Palmer Consulting Engineers, Inc.
 90 Box 1237 Traffic and Civil Engineering Services
 15 Shaker Road FAX: 207-637-6912
 E-Mail: mholbo@gorrillpalmer.com
 Gorrill, ME 04039

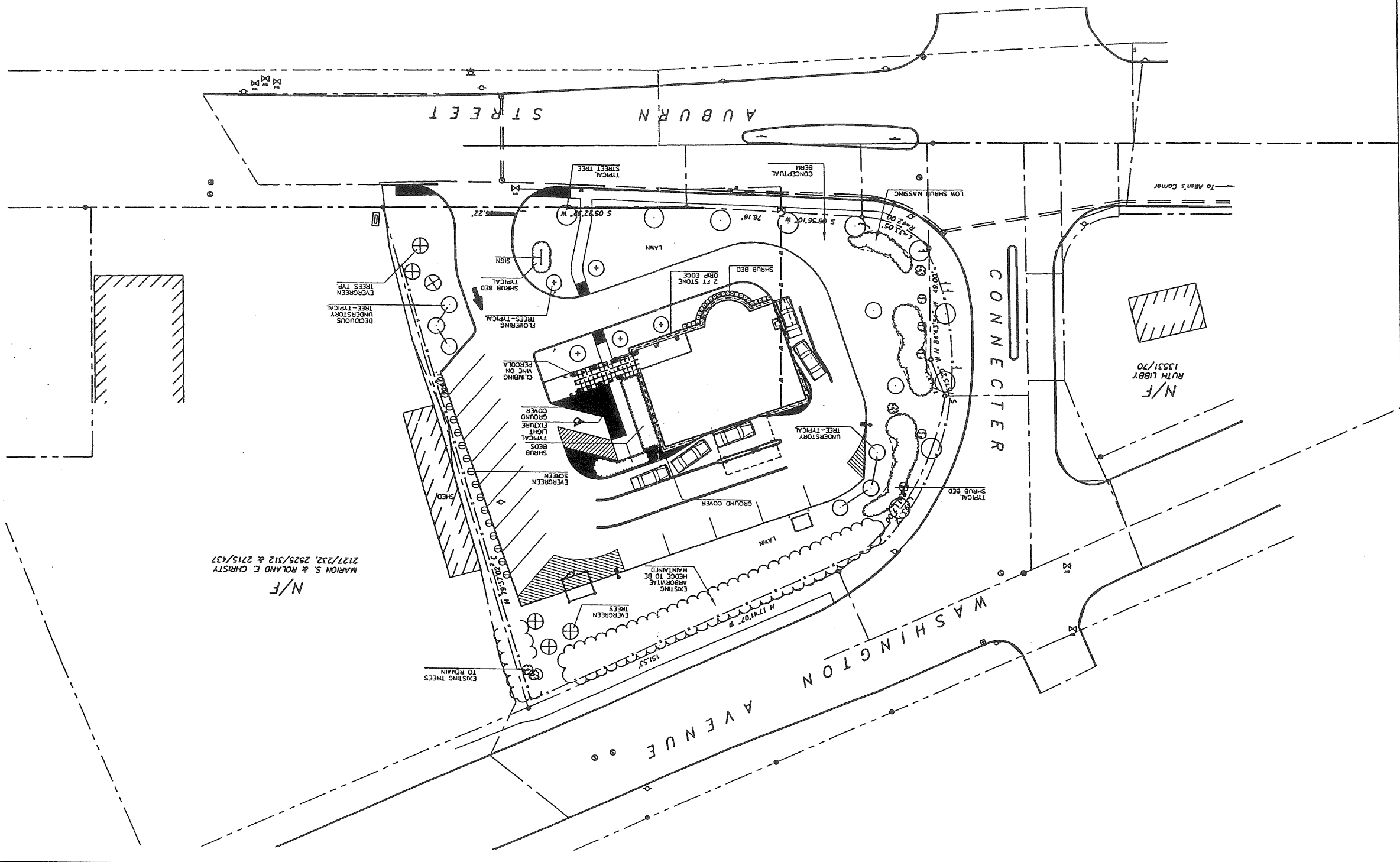
MITCHELL & ASSOCIATES
 LANDSCAPE ARCHITECTS
 THE STABLES SCHOOL
 70 CENTER STREET
 PORTLAND, MAINE 04101
 TEL: (207) 774-4427
 FAX: (207) 874-2460



L101
 SHEET

REVISION DATE
 ORIGINAL DATE 19 NOV 02
 SCALE 1"=20'-0"
 DRAWN BY JAP
 CHECKED BY RBM
 JOB NO. 22003

SHEET TITLE
 CONCEPT PLANNING
 PLANNING STATUS
 OFFICE REVIEW
 CLIENT REVIEW
 PRELIM REVIEW
 CONTRACT DRAWING
 SITE PLAN
 CONSTRUCTION



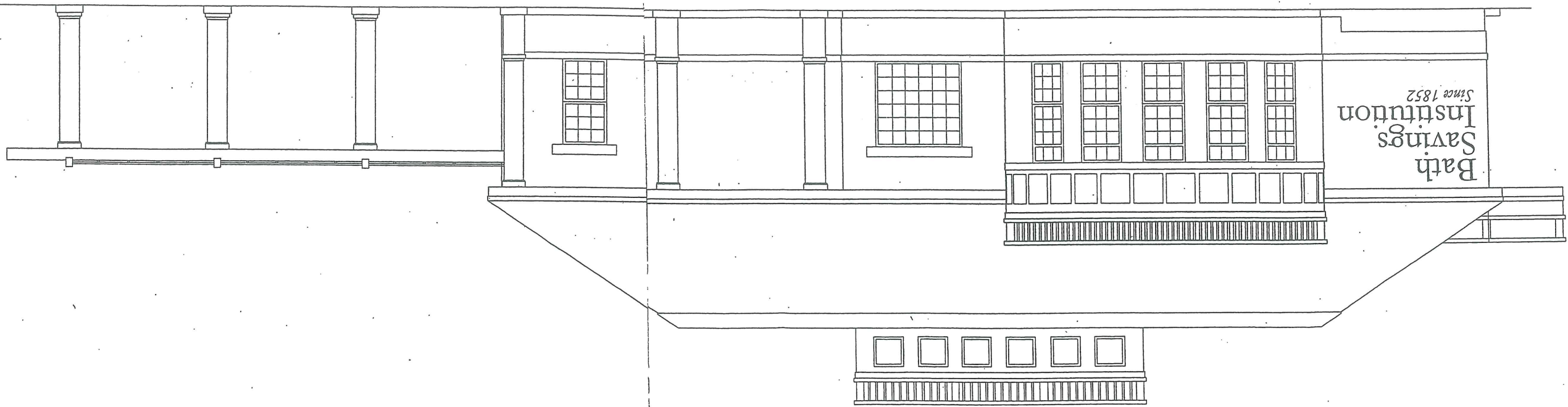
Bath Savings Institution
 Portland, Maine

PLATZ ASSOCIATES
 Architects - Engineers
 Construction Managers
 Two Great Falls Plaza, Auburn, Maine 04210
 Tel: 207-784-2941
 Fax: 207-784-3996

MARION S. & ROLAND E. CHRISTY
 2127/232, 2925/312 & 2715/437
 N/F

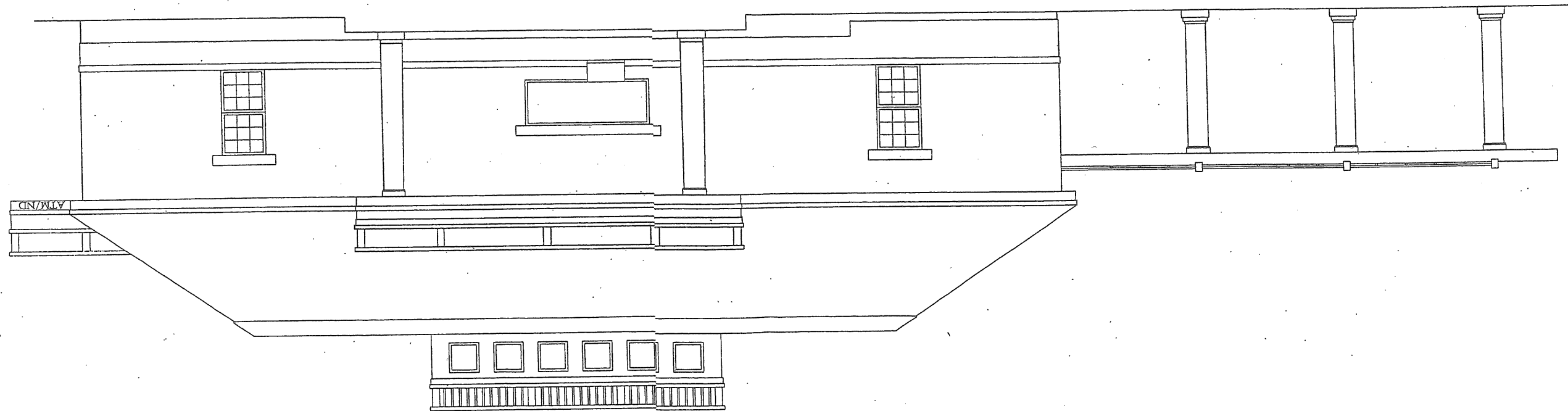
N/F
 RUTH LOBBY
 13531/70

Auburn St. Elevation



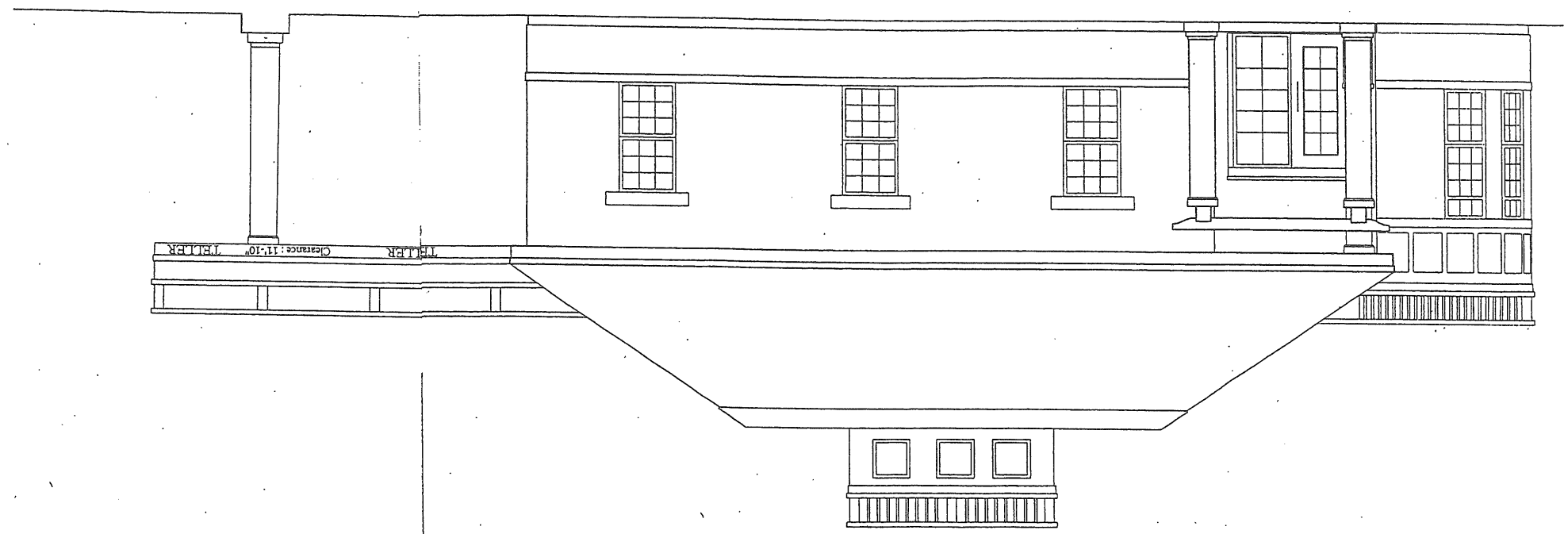
Att. A12

WASHINGTON AVENUE ELEVATION



ATM/ND

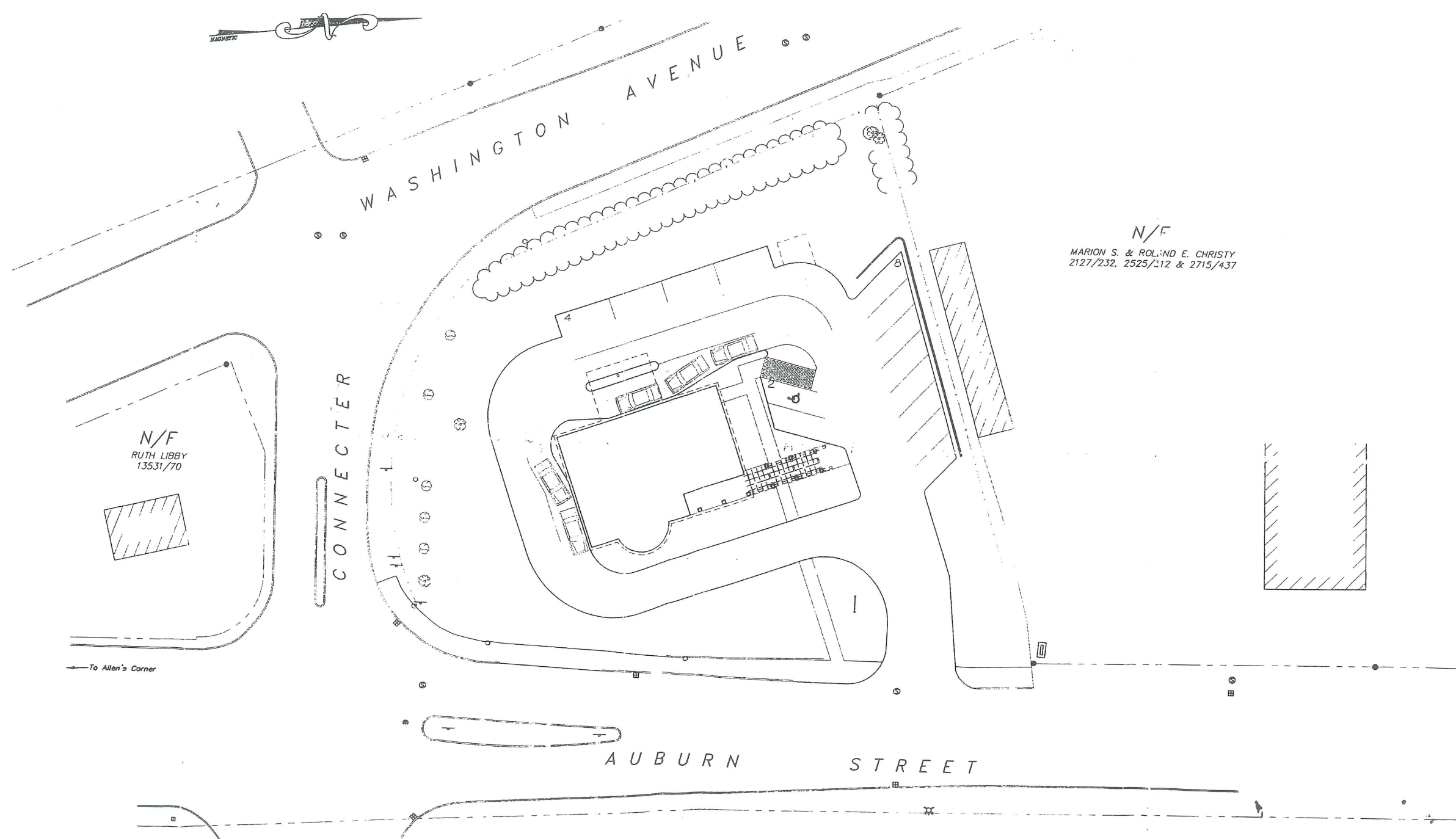
NORTH ELEVATION



2

IL

Exhibit E



thm

PLATZ ASSOC
 Architects
 Construct
 Tel 207-784-2941
 Fax 207-784-3856
 140 Great Falls Road, Auburn, ME

Bath Savings Institution
 Portland, Maine

REVIEW COPY

DRAWING STATUS
 OFFICE REVIEW
 CLIENT REVIEW
 PERMIT REVIEW
 BID SET
 CONTRACT DRAWING
 CONSTRUCTION

No drawing shall be recognized as a construction document unless it bears a blue inked registration seal.

PROPOSED SITE PLAN