

VITODENS 100-W

Gas-fired wall-mounted condensing boiler with modulating stainless steel cylinder burner and Inox-Radial heat exchanger surface. Rated input: 21 to 125 MBH

Flyer (PDF 364 KB)

[Benefits](#) [Where to buy](#) [Product details](#) [Downloads](#) [System technology](#) [Pro center](#)



Vitodens 100-W - The perfect mix of performance, quality and value

The benefits at a glance

- Vitodens 100-W, B1HA space heating boiler and Vitodens 100-W, B1KA combi boiler fits any home and budget with high performance at an attractive price.
- Outstanding efficiency of 95% A.F.U.E. on all models.
- Low-emission combustion with fully-modulating Viessmann stainless steel MatriX cylinder burner for natural gas or propane.
- User-friendly backlit LCD touchscreen boiler control.

Model	B1HA 26, 94	B1HA 35, 125	B1KA 35, 125	
Rated input (Heating)	MBH 21-94	21-125	21-125	
Rated input (DHW)	MBH —	—	21-149	
Efficiency	% AFUE 95%	95%	95%	
Max. boiler temperature (during DHW production)	°F (°C) —	—	176 (80)	
DHW Supply temperature	°F (°C) —	—	140 (60)	
Continuous draw rate (Max.)	USG/min —	—	3.7±	
Altitude Levels	ft. up to 10,000 ft.	up to 10,000 ft.	up to 10,000 ft.	
Dimensions (inches)	Depth	15.75	15.75	
	Width	15.75	15.75	
	Height	30.25	30.25	
Weight	lbs 79.4	79.4	90	
Boiler max. flow rate	GPM 6.2	6.2	6.2	
	L/h 1400	1400	1400	
Max. operating pressure (max. allowable working pressure) at 210°F (99°C)	psig 45	45	45	
	bar 3	3	3	
Boiler connections	Boiler heating supply and return	NPTM (male) 3/4"	3/4"	3/4"
	Pressure relief valve	NPTF (female) 3/4"	3/4"	3/4"
	DHW tank heating supply/return	NPTM (male) 3/4"	3/4"	—
	DHW heating	NPTM (male) —	—	1/2"
	Drain valve	NPTM (male thread) 3/4"	3/4"	3/4"

Standard E
Installation f
 30 psig PRV,
 gage, gas sh
 two fill/drain
 mounting ha
 outdoor tem
 sensor, LP c
 kit, tank tem
 sensor (B1H,
 150 psig PR)

± At a 69°F maximum temperature rise

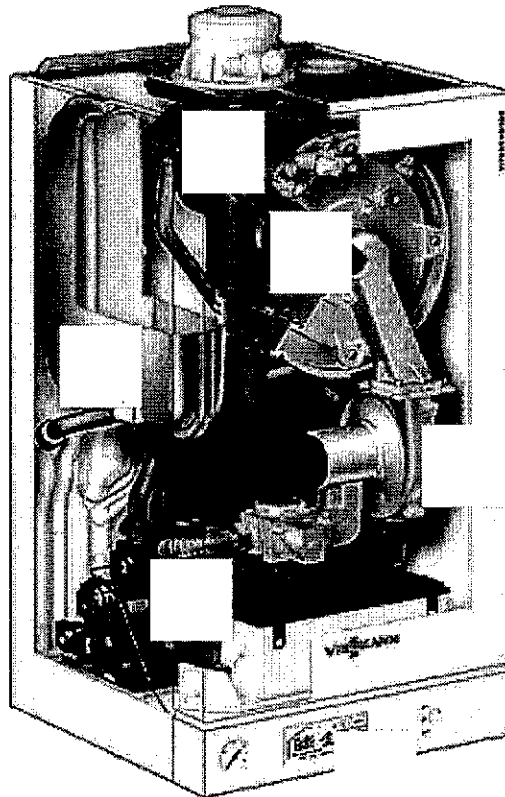
Warranty

Limited lifetime warranty in residential applications

Additional features

Compact, lightweight wall-mount design and zero clearance to combustibles make it a great choice for limited-space installations.

Close details



Technical data

Model	100-W	100-W	100-W	100-W
Rated input (kW)	24	24	24	24
Rated output (kW)	18	18	18	18
Efficiency (%)	92	92	92	92
Water capacity (liters)	10	10	10	10
Weight (kg)	15	15	15	15
Dimensions (mm)	400x400x400	400x400x400	400x400x400	400x400x400
Gas type	Natural Gas	Natural Gas	Natural Gas	Natural Gas
Pressure (bar)	1.0	1.0	1.0	1.0
Flow rate (l/min)	10	10	10	10
Max. pressure (bar)	1.5	1.5	1.5	1.5
Max. temperature (°C)	110	110	110	110
Max. pressure (bar)	1.5	1.5	1.5	1.5
Max. temperature (°C)	110	110	110	110
Max. pressure (bar)	1.5	1.5	1.5	1.5
Max. temperature (°C)	110	110	110	110
Max. pressure (bar)	1.5	1.5	1.5	1.5
Max. temperature (°C)	110	110	110	110
Max. pressure (bar)	1.5	1.5	1.5	1.5
Max. temperature (°C)	110	110	110	110