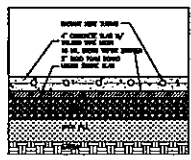
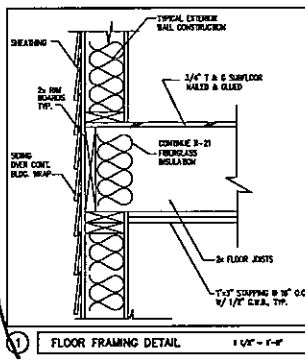


FOUNDATION DETAIL @ HOUSE
3/4" = 1'-0"



RADIANT HEAT DETAIL
3/4" = 1'-0"

furnace on
SLAB IN
UTILITY ROOM

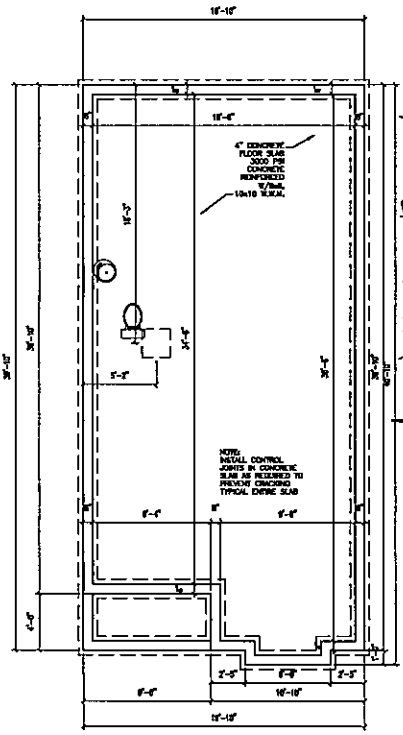


GENERAL NOTES:

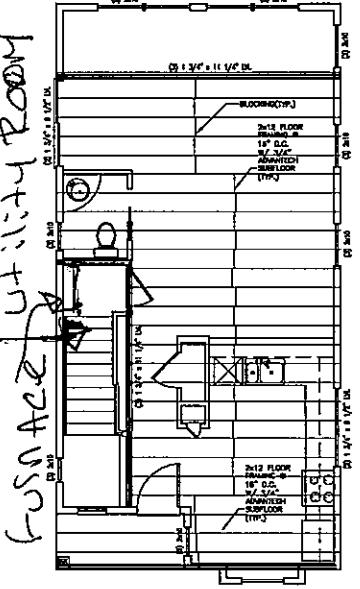
- All work shall be in accordance with IRC 2006, IRC Book Building Code, IRC-20 National Electric Code, Maine State Plumbing Code, ISPMAC, LLC, IFPA Code and all local, State and Federal requirements.
- All required City and State permits must be obtained before any construction begins.
- Standard, Mechanical, Electrical and Plumbing design and installation by others shall be performed in accordance with local, State and Federal standards.
- All set of openings & mechanical penetrations with approval by sealing required.
- Building shall have approved energy solution in accordance with IEPP-101 the Safety Code.

HEADER SCHEDULE	
ROUGH OPENING	HEADER SIZE
0 - 3'-0"	2" - 3x6
3'-0" - 4'-0"	2" - 3x8
4'-0" - 5'-0"	2" - 3x10
5'-0" - 6'-0"	2" - 3x12

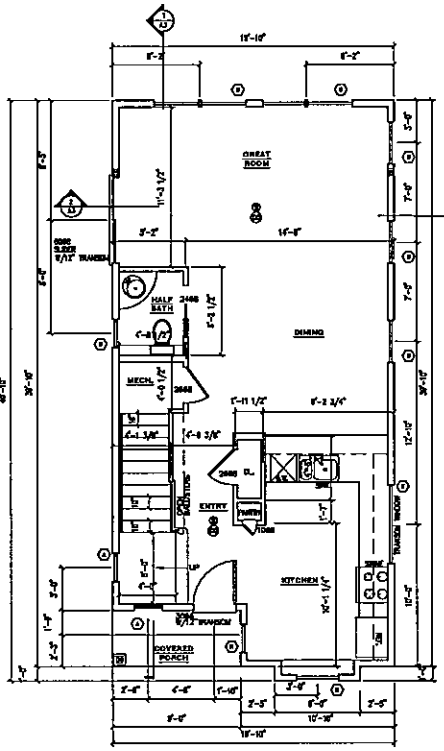
NOTE: FINISH JAMBS WITH EXPOSED AS FOLLOWS:
 (1) 3x6 JOIST PLUS (2) 3x6 JOIST UP TO 4'-0" ROUGH OPENING
 (2) 3x6 JOIST PLUS (2) 3x6 JOIST UP TO 7'-0" ROUGH OPENING



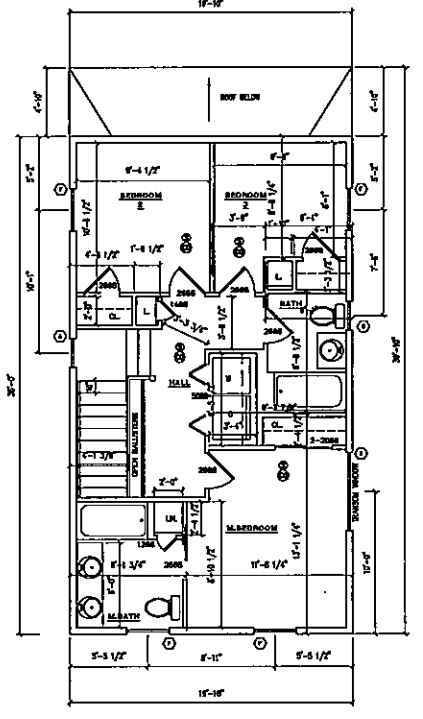
FOUNDATION PLAN
1/4" = 1'-0"



SECOND FLOOR FRAMING PLAN
1/4" = 1'-0"



FIRST FLOOR PLAN
1/4" = 1'-0"



SECOND FLOOR PLAN
1/4" = 1'-0"

TOWLE RESIDENCE
WASHINGTON AVENUE
PORTLAND, MAINE

FOUNDATION PLAN
SECOND FLOOR FRAMING PLAN
FLOOR PLANS/DETAILS

A1
SCALE: AS NOTED
PROJECT NAME: TOWLE