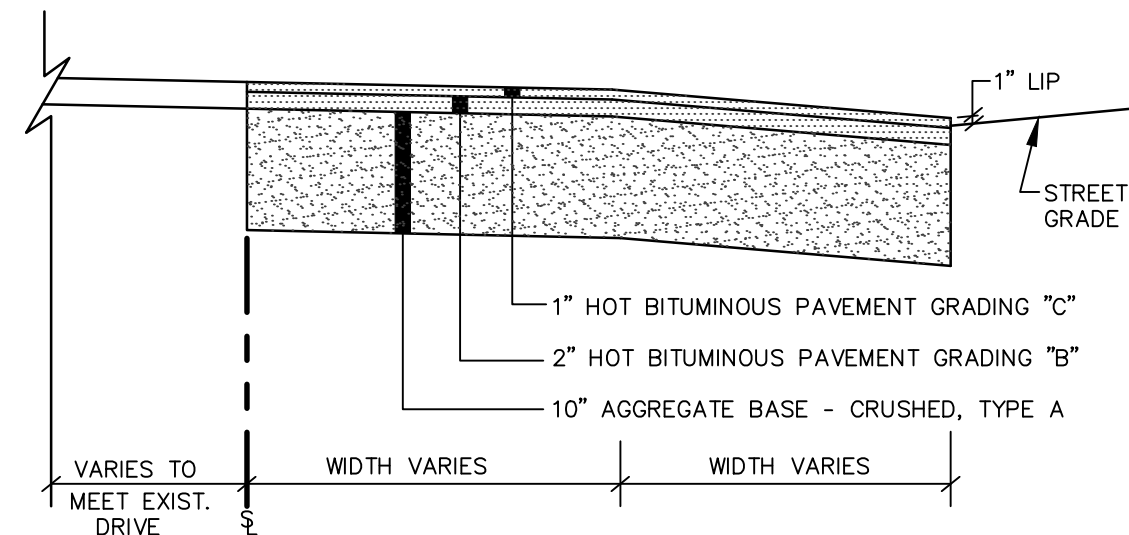
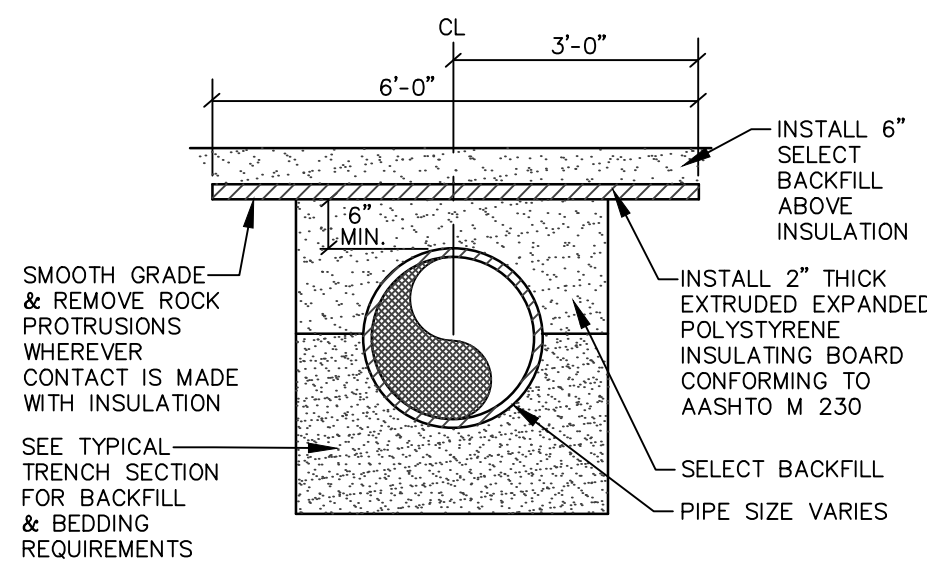


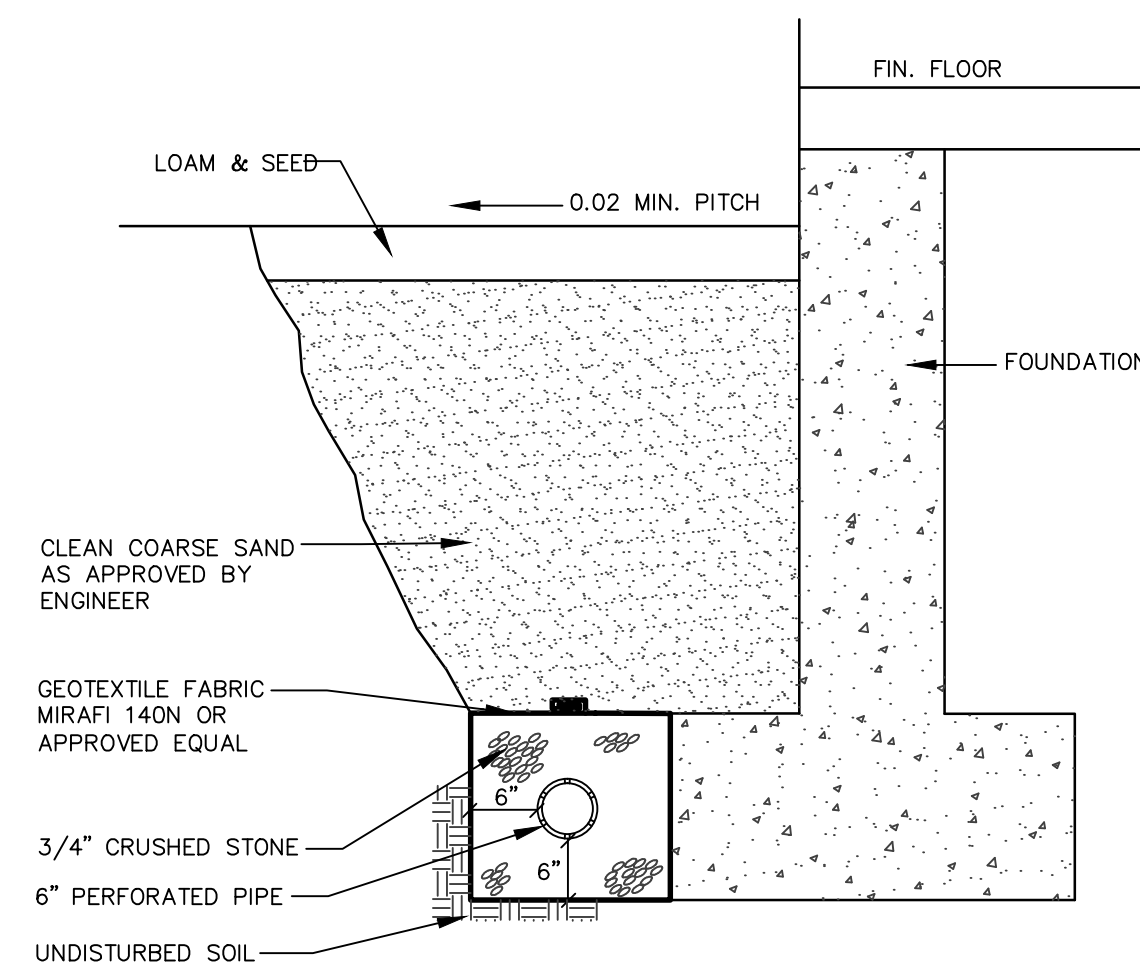
TYPICAL PAVEMENT JOINT
NOT TO SCALE



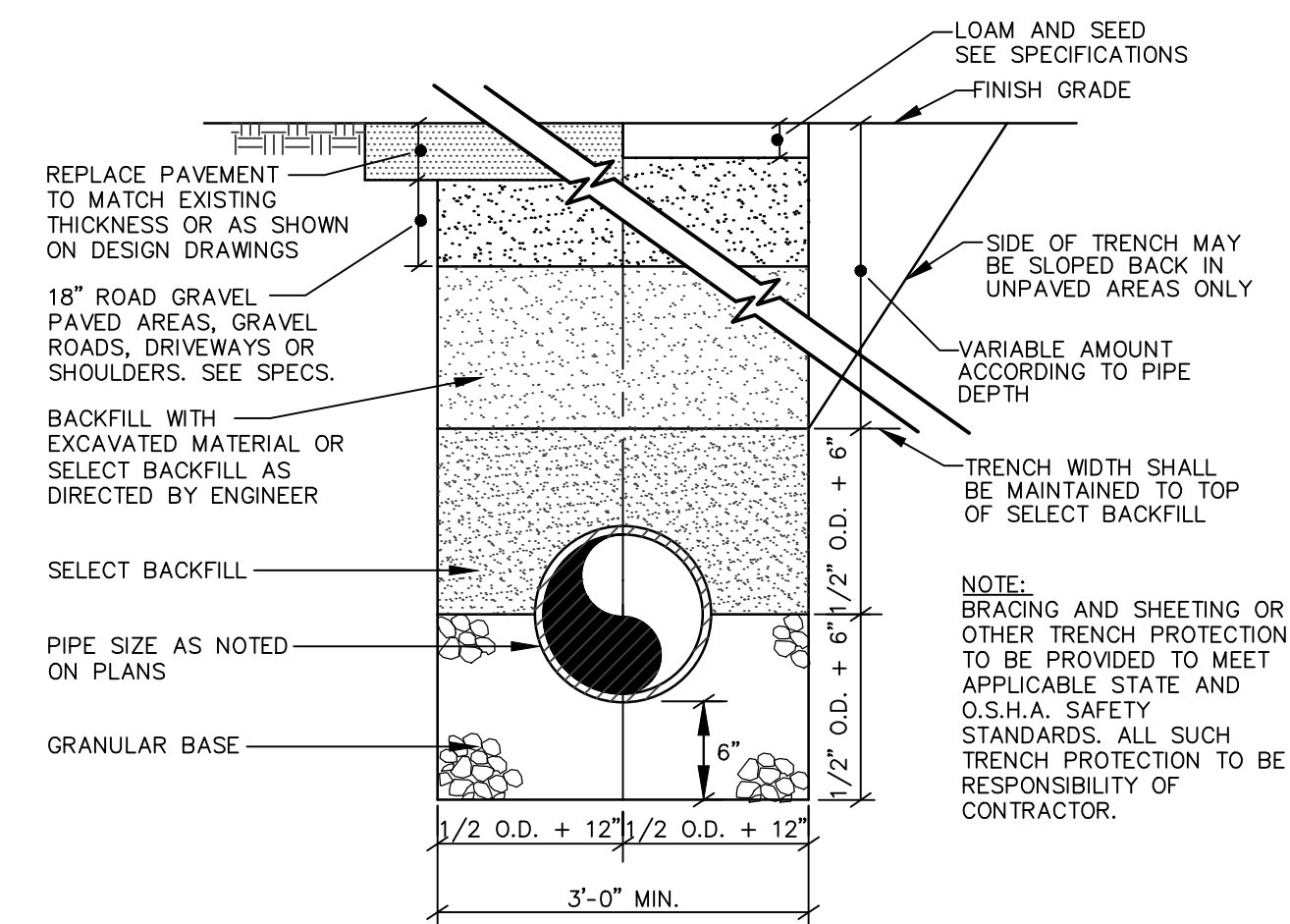
BITUMINOUS DRIVEWAY CONSTRUCTION
NOT TO SCALE



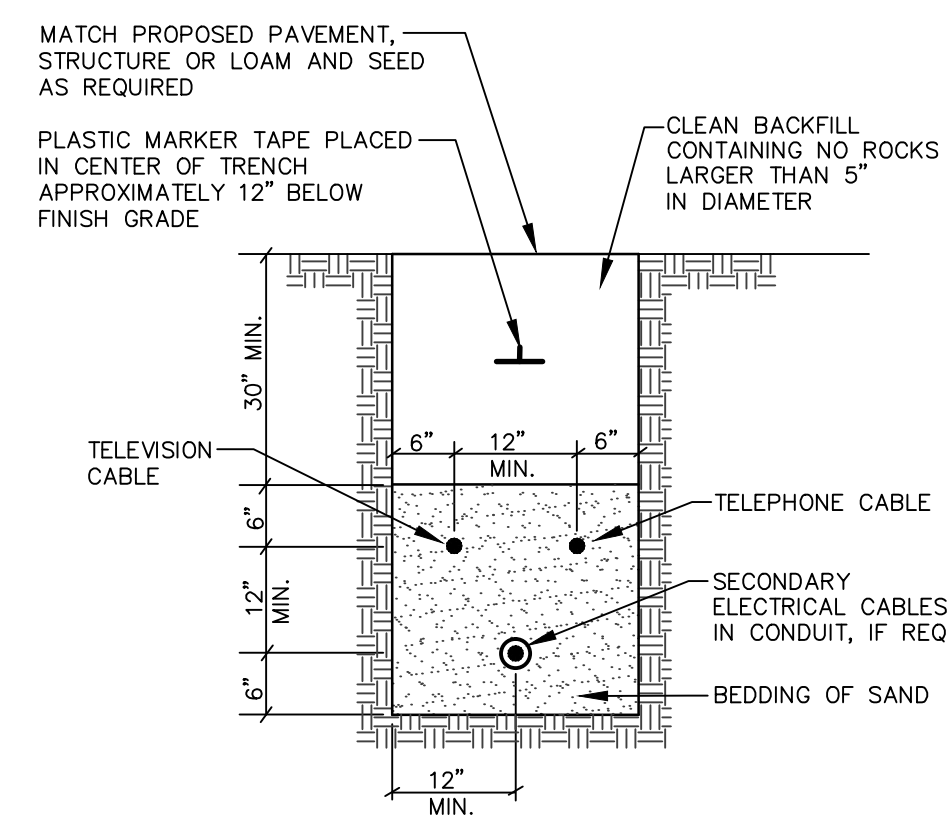
PIPE INSULATION DETAIL
NOT TO SCALE



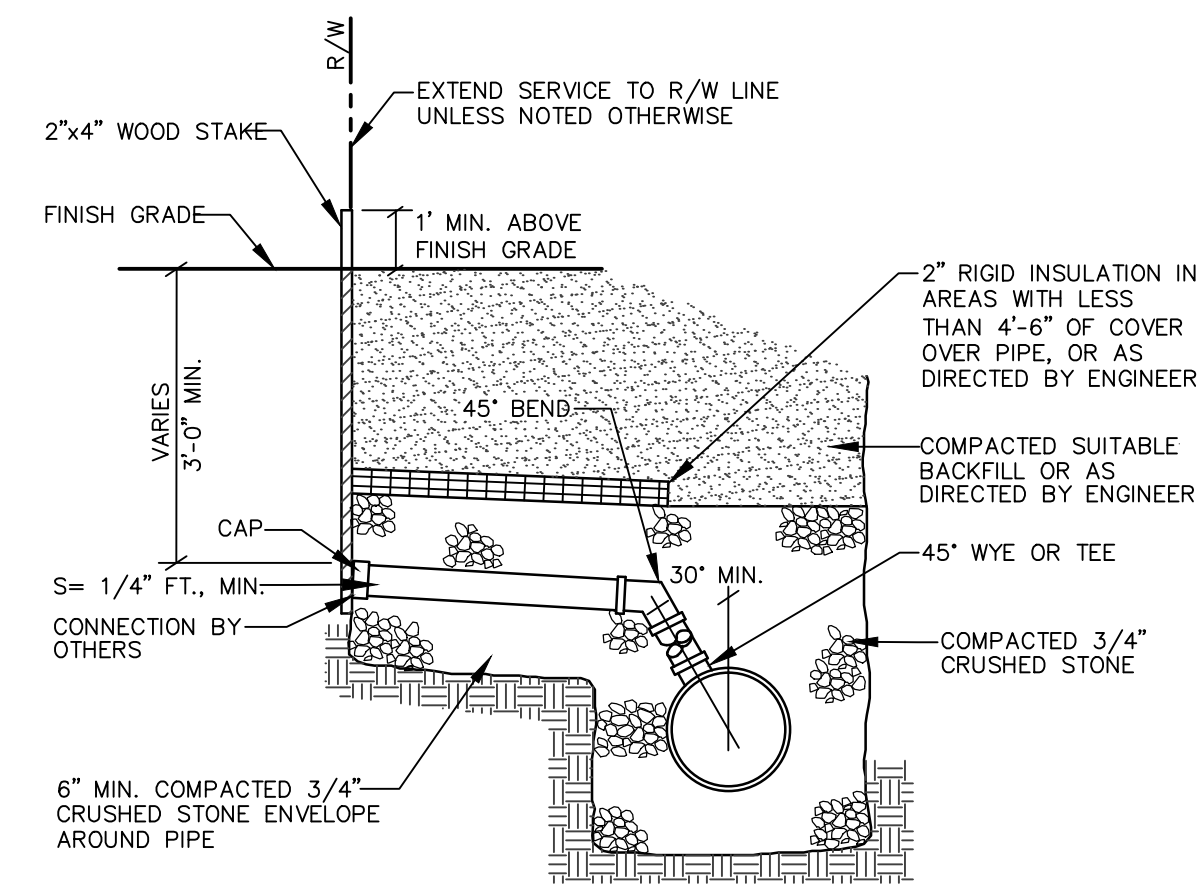
TYP. FOUNDATION DRAIN SECTION
NOT TO SCALE



TRENCH SECTION
NOT TO SCALE

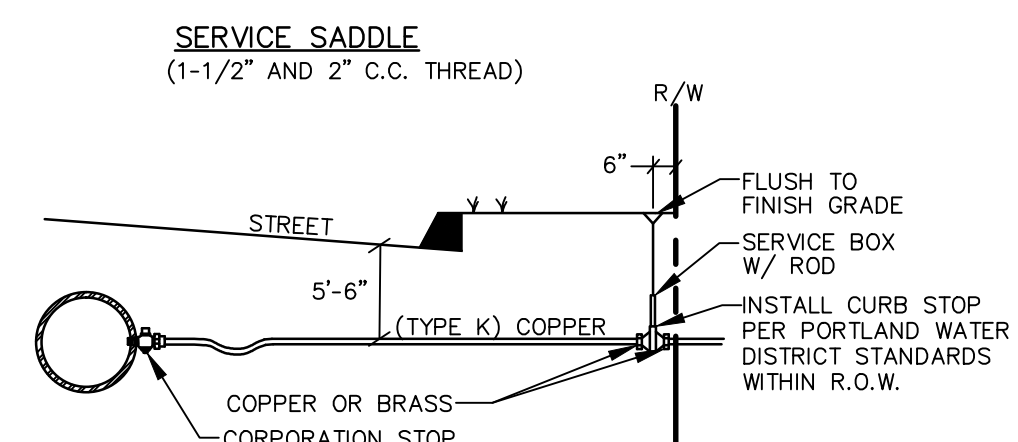
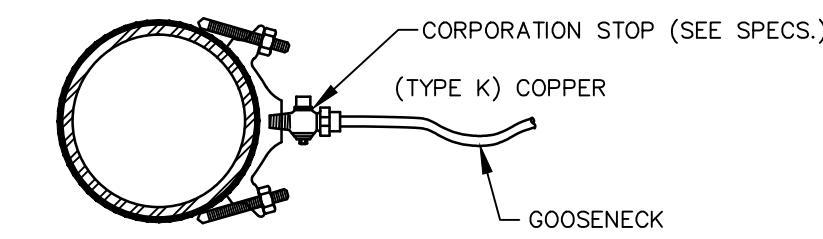
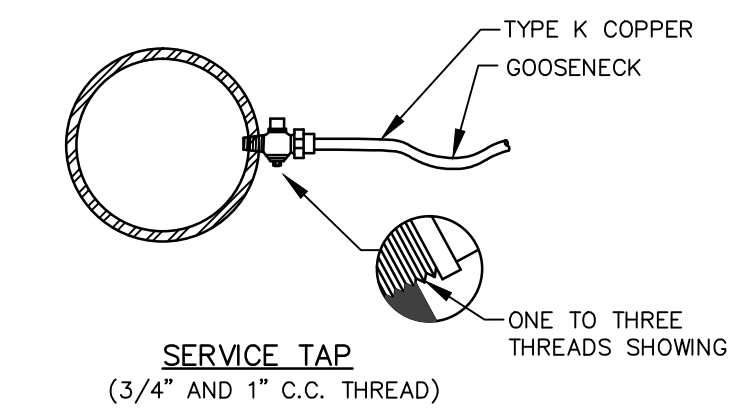


TYPICAL UNDERGROUND CABLE INSTALLATION
NOT TO SCALE

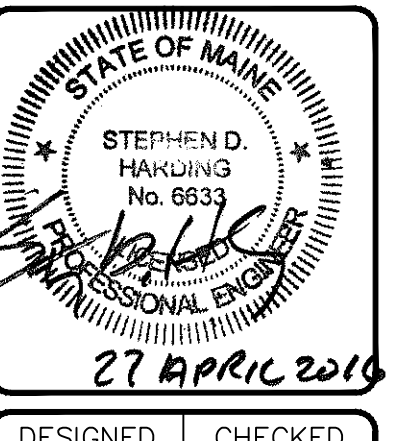


- NOTES:
1. PIPE DIAMETERS MAY VARY, SEE TYPICAL PIPE TRENCH DETAIL THIS SHEET.
 2. WHERE 30° MINIMUM ANGLE BETWEEN SEWER CONNECTION AT THE SEWER MAIN AND THE VERTICAL CANNOT BE MAINTAINED, PROVIDE A PRECAST SEWER CHIMNEY.
 3. IF STAKE IS CUT OFF FLUSH OR SLIGHTLY BELOW GRADE, PROVIDE MIN. OF TWO 16d GALV. SPIKES DRIVEN INTO TOP OF 2" x 4" TO PROVIDE METAL DETECTABILITY.

HORIZONTAL SANITARY & STORM DRAIN CONNECTION
NOT TO SCALE



TYPICAL SERVICE CONNECTION
NOT TO SCALE



| | |
|---|------------|
| DESIGNED BY | CHECKED BY |
| DES BY | CHK BY |
| A. M.W. 4/27/16 RELEASED FOR CLIENT REVIEW | |
| REVIEW BY: DATE: STATUS: WITHOUT WRITTEN PERMISSION FROM SEBAGO TECHNICS, INC. - ANY ALTERATIONS, MODIFICATIONS, OR REVISIONS SHALL BE AT THE USER'S SOLE RISK AND WITHOUT LIABILITY TO SEBAGO TECHNICS, INC. | |

SEBAGO TECHNICS

WWW.SEBAGOTECHNICS.COM
250 Goddard Rd. Suite B
South Portland, ME 04106
Tel: 207-783-5656
75 John Roberts Rd. Suite 1A
Lewisburg, TN 37078
Tel: 615-933-3540

DETAILS OF: PROPOSED LOT DIVISION
1637 WASHINGTON AVE
PORTLAND, MAINE

FOR: STAN AND SANDY TOWLE
15 BRYANT STREET
SOUTH PORTLAND, MAINE 04106

| | |
|-------------|----------|
| PROJECT NO. | SCALE |
| 15513 | 1" = 10' |