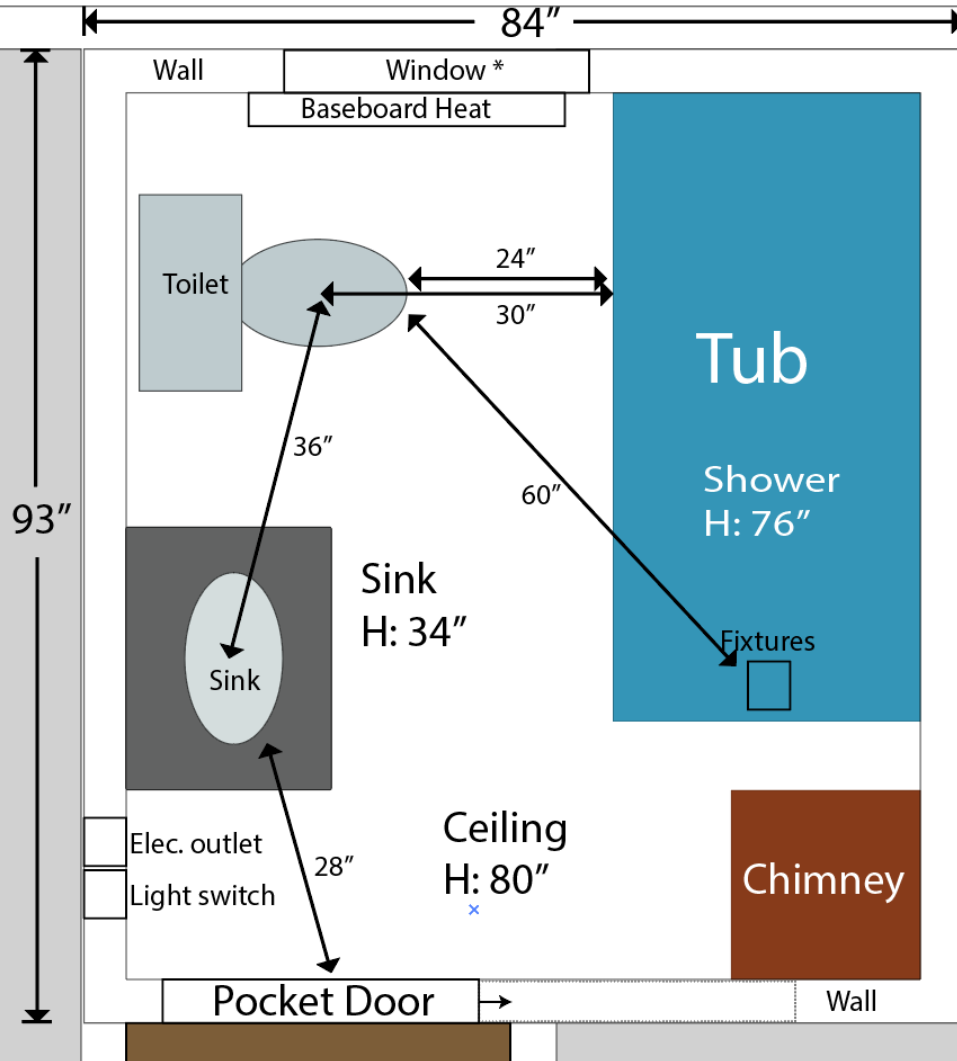




Reviewed for Code Compliance
Permitting and Inspections Department
Approved with Conditions

01/22/2019

Exterior Wall



* Window Header will be a triple 2x8 with 1 inch foam insulation sandwiched in between. Rough opening will be 28" wide x 36" tall. Header will span opening and sit on top of jacks, making it about 39" long. Two jacks, one on either side. Window U-Factor is 0.3. Glass will be tempered.

Bedroom
165" x 174"