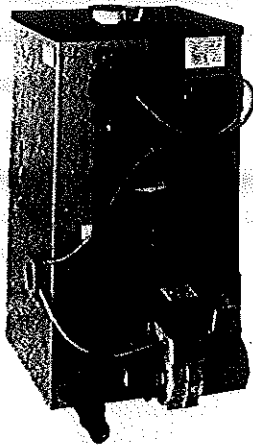


PEERLESS™

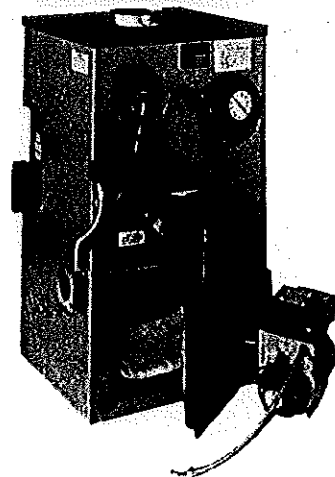
CAST IRON BOILERS

- ### Series EC/ECT
- Residential Oil GAS
 - Packaged or Knockdown
 - Natural Draft Venting
 - Flame Retention Burner
 - Steam or Hot Water Boilers
 - Optional Tankless Coils



Series EC

*EC-06
w/ GAS BURNER*



Series ECT

GAS BURNER

AFUE ranges from 82% to 88%

**AUBURN TERRACE
BOILER SPECIFICATIONS
AND BUILDING
LAYOUT.**

boilers, insuring ample domestic hot water production.

Peerless provides Beckett burners as standard equipment on all 3, 4 and 5-section EC/ECT boilers. Carlin is standard on all EC/ECT 6-section boilers. Contact factory for availability and approval of Riello burners.

SERIES EC/ECT BOILER RATINGS

Boiler Model Number	Burner Input		DOE Heating Cap. MBH		Net I=B=R Ratings			Seasonal Efficiency (AFUE)		Water Content (Gal.)		Min. Draft Req. W.C.
			Gross Output					Combustion Efficiency		Water	Steam	
	GPH	MBH	Water	Steam	Sq. Ft.	Steam MBH	Water MBH	Water	Steam			
EC/ECT-03	0.75	105	92	91	283	68	80	86.6	85.4	17.40	14.16	-.03
EC/ECT-03	1.00	140	121	120	375	90	105	85.3	84.4	17.40	14.16	-.04
EC/ECT-03	1.20	168	144	142	446	107	125	83.9	82.9	17.40	14.16	-.05
EC/ECT-04	1.25	175	152	151	471	113	132	86.1	85.1	21.72	17.28	-.03
EC/ECT-04	1.50	210	181	180	563	135	157	85.2	84.5	21.72	17.28	-.04
EC/ECT-04	1.75	245	209	208	650	156	182	84.5	83.8	21.72	17.28	-.05
EC/ECT-05	1.75	245	214	212	663	159	186	86.2	85.6	26.04	20.40	-.03
EC/ECT-05	2.00	280	241	240	750	180	210	85.2	84.6	26.04	20.40	-.04
EC/ECT-05	2.50	350	286	286	896	215	249	83.1	83.1	26.04	20.40	-.05
EC/ECT-06	2.75	385	321	321	1004	241	279	83.4	83.4	30.36	23.52	-.04
EC/ECT-06	3.00	420	347	347	1083	261	302	83.7	83.7	30.36	23.52	-.05

Heating capacity MBH based on 13.0% CO₂ and -.02" water column draft in firebox. The Net I=B=R Ratings shown include allowance for normal piping and pick-up load. The water ratings are based on a piping and pick-up allowance factor of 1.15, steam ratings are based on allowance of 1.33. Burner input is based on a fuel oil with a heating value of 140,000 BTU per gallon. Burner input based on maximum altitudes of 2,000 ft. — for other altitudes consult factory.

EASTERN MECHANICAL INC. - AUBURN TERRACE

PEERLESS™

CAST IRON BOILERS

Series EC/ECT

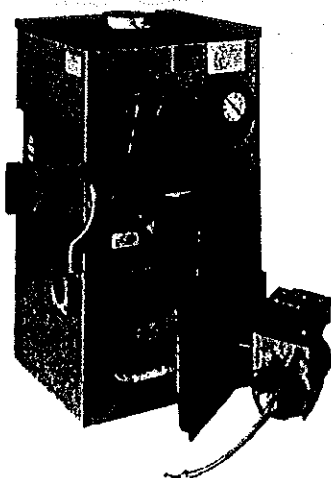
- Residential ~~Oil~~ GAS
 - Packaged or Knockdown
- Natural Draft Venting
- Flame Retention Burner
- Steam or Hot Water Boilers
- Optional Tankless Coils



Series EC

GAS BURNER

EC-06
w/ GAS BURNER



Series ECT

- AFUE ranges from 82.9% to 86.6%, significantly exceeding the federal energy standards for residential boiler efficiency.
- The entire burner mounting plate operates as a swing out door providing easy access to the combustion chamber thus making boiler cleaning quick and easy.
- The large water content of this boiler makes the EC/ECT ideal for steam boiler applications.
- The EC and the ECT hot water boilers provide optional tankless domestic hot water openings for versatility.
- The ECT designation indicates that an optional, larger, tankless domestic hot water coil can be installed in its specially designed rear section for steam or hot water boilers, insuring ample domestic hot water production.

Peerless provides Beckett burners as standard equipment on all 3, 4 and 5-section EC/ECT boilers. Carlin is standard on all EC/ECT 6-section boilers. Contact factory for availability and approval of Riello burners.

SERIES EC/ECT BOILER RATINGS

Boiler Model Number	Burner Input		DOE Heating Cap. MBH		Net I=B=R Ratings			Seasonal Efficiency (AFUE)		Water Content (Gal.)		Min. Draft Req. W.C.
			Gr. Output					Combustion Efficiency		Water	Steam	
	GPH	MBH	Water	Steam	Steam Sq. Ft.	Steam MBH	Water MBH	Water	Steam			
EC/ECT-03	0.75	105	92	91	283	68	80	86.6	85.4	17.40	14.16	-.03
EC/ECT-03	1.00	140	121	120	375	90	105	85.3	84.4	17.40	14.16	-.04
EC/ECT-03	1.20	168	144	142	446	107	125	83.9	82.9	17.40	14.16	-.05
EC/ECT-04	1.25	175	152	151	471	113	132	86.1	85.1	21.72	17.28	-.03
EC/ECT-04	1.50	210	181	180	563	135	157	85.2	84.5	21.72	17.28	-.04
EC/ECT-04	1.75	245	209	208	650	156	182	84.5	83.8	21.72	17.28	-.05
EC/ECT-05	1.75	245	214	212	663	159	186	86.2	85.6	26.04	20.40	-.03
EC/ECT-05	2.00	280	241	240	750	180	210	85.2	84.6	26.04	20.40	-.04
EC/ECT-05	2.50	350	288	286	896	215	249	83.7	83.1	26.04	20.40	-.05
EC/ECT-06	2.75	385	331	321	1004	241	279	83.4	82.8	30.36	23.52	-.04
EC/ECT-06	3.00	420	347	347	1083	261	302	83.7	83.2	30.36	23.52	-.05

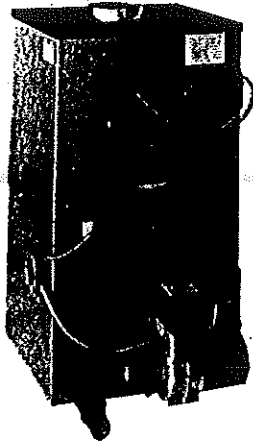
Heating capacity MBH based on 13.0% CO₂ and -.02' water column draft in firebox. The Net I=B=R Ratings shown include allowance for normal piping and pick-up load. The water ratings are based on a piping and pick-up allowance factor of 1.16, steam ratings are based on allowance of 1.33. Burner Input is based on a fuel oil with a heating value of 140,000 BTU per gallon. Burner Input based on maximum altitudes of 2,000 ft. — for other altitudes consult factory.



CAST IRON BOILERS

Series EC/ECT

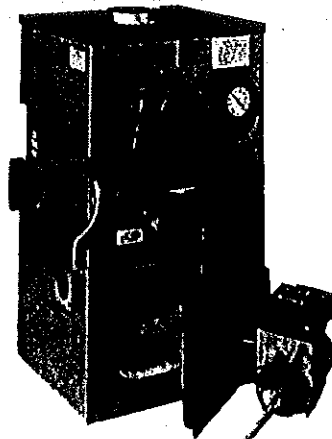
- Residential ~~Oil~~ GAS
 - Packaged or Knockdown
- Natural Draft Venting
- Flame Retention Burner
- Steam or Hot Water Boilers
- Optional Tankless Coils



Series EC

GAS BURNER

EC-06
w/ GAS BURNER



Series ECT

- AFUE ranges from 82.9% to 86.6%, significantly exceeding the federal energy standards for residential boiler efficiency.
- The entire burner mounting plate operates as a swing out door providing easy access to the combustion chamber thus making boiler cleaning quick and easy.
- The large water content of this boiler makes the EC/ECT ideal for steam boiler applications.
- The EC and the ECT hot water boilers provide optional tankless domestic hot water openings for versatility.
- The ECT designation indicates that an optional, larger, tankless domestic hot water coil can be installed in its specially designed rear section for steam or hot water boilers, insuring ample domestic hot water production.

Peerless provides Beckett burners as standard equipment on all 3, 4 and 5-section EC/ECT boilers. Carlin is standard on all EC/ECT 6-section boilers. Contact factory for availability and approval of Riello burners.

SERIES EC/ECT BOILER RATINGS

Boiler Model Number	Burner Input		DOE Heating Cap. MBH		Net I=B=R Ratings			Seasonal Efficiency (AFUE)		Water Content (Gal.)		Min. Draft Req. W.C.
			(Gas Input)					(Combustion Efficiency)		Water	Steam	
	GPH	MBH	Water	Steam	Steam Sq. Ft.	Steam MBH	Water MBH	Water	Steam			
EC/ECT-03	0.75	105	92	91	283	68	80	86.6	85.4	17.40	14.16	-.03
EC/ECT-03	1.00	140	121	120	375	90	105	85.3	84.4	17.40	14.16	-.04
EC/ECT-03	1.20	168	144	142	446	107	125	83.9	82.9	17.40	14.16	-.05
EC/ECT-04	1.25	175	152	151	471	113	132	86.1	85.1	21.72	17.28	-.03
EC/ECT-04	1.50	210	181	180	563	135	157	85.2	84.5	21.72	17.28	-.04
EC/ECT-04	1.75	245	209	208	650	158	182	84.5	83.8	21.72	17.28	-.05
EC/ECT-05	1.75	245	214	212	663	159	186	86.2	85.6	26.04	20.40	-.03
EC/ECT-05	2.00	280	241	240	750	180	210	85.2	84.6	26.04	20.40	-.04
EC/ECT-05	2.50	350	288	286	896	215	249	83.7	82.8	26.04	20.40	-.05
EC/ECT-06	2.75	385	321	321	1004	241	279	82.4	81.4	30.36	23.52	-.04
EC/ECT-06	3.00	420	347	347	1083	261	302	83.7	83.7	30.36	23.52	-.05

Heating capacity MBH based on 13.0% CO₂ and -.02" water column draft in firebox. The Net I=B=R Ratings shown include allowance for normal piping and pick-up load. The water ratings are based on a piping and pick-up allowance factor of 1.15, steam ratings are based on allowance of 1.33. Burner input is based on a fuel oil with a heating value of 140,000 BTU per gallon. Burner input based on maximum altitudes of 2,000 ft. — for other altitudes consult factory.

PEERLESS™

CAST IRON BOILERS

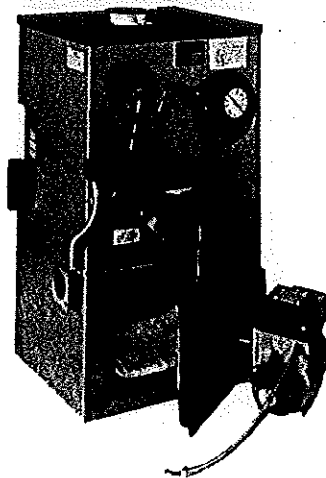
Series EC/ECT

- Residential Off GAS
 - Packaged or Knockdown
- Natural Draft Venting
- Flame Retention Burner
- Steam or Hot Water Boilers
- Optional Tankless Coils



Series EC

EC-06
w/ GAS BURNER



Series ECT

GAS BURNER

- AFUE ranges from 82.9% to 86.6%, significantly exceeding the federal energy standards for residential boiler efficiency.
- The entire burner mounting plate operates as a swing out door providing easy access to the combustion chamber thus making boiler cleaning quick and easy.
- The large water content of this boiler makes the EC/ECT ideal for steam boiler applications.
- The EC and the ECT hot water boilers provide optional tankless domestic hot water openings for versatility.
- The ECT designation indicates that an optional, larger, tankless domestic hot water coil can be installed in its specially designed rear section for steam or hot water boilers, insuring ample domestic hot water production.

Peerless provides Beckett burners as standard equipment on all 3, 4 and 5-section EC/ECT boilers. Carlin is standard on all EC/ECT 6-section boilers. Contact factory for availability and approval of Riello burners.

SERIES EC/ECT BOILER RATINGS

Boiler Model Number	Burner Input		DOE Heating Cap. MBH		Net I=B=R Ratings			Seasonal Efficiency (AFUE)		Water Content (Gal.)		Min. Draft Req. W.C.
			Gross Output		Steam Sq. Ft.	Steam MBH	Water MBH	Combustion Efficiency		Water	Steam	
	GPH	MBH	Water	Steam				Water	Steam			
EC/ECT-03	0.75	105	92	91	283	68	80	86.6	85.4	17.40	14.16	-.03
EC/ECT-03	1.00	140	121	120	375	90	105	85.3	84.4	17.40	14.16	-.04
EC/ECT-03	1.20	168	144	142	446	107	125	83.9	82.9	17.40	14.16	-.05
EC/ECT-04	1.25	175	152	151	471	113	132	86.1	85.1	21.72	17.28	-.03
EC/ECT-04	1.50	210	181	180	563	135	167	85.2	84.5	21.72	17.28	-.04
EC/ECT-04	1.75	245	209	208	650	156	182	84.5	83.8	21.72	17.28	-.05
EC/ECT-05	1.75	245	214	212	663	159	186	86.2	85.6	26.04	20.40	-.03
EC/ECT-05	2.00	280	241	240	750	180	210	85.2	84.6	26.04	20.40	-.04
EC/ECT-05	2.50	350	286	286	896	215	249	84.3	84.3	26.04	20.40	-.05
EC/ECT-06	2.75	385	321	321	1004	241	279	84.4	84.4	30.36	23.52	-.04
EC/ECT-06	3.00	420	347	347	1083	261	302	83.7	83.7	30.36	23.52	-.05

Heating capacity MBH based on 13.0% CO₂ and -.02' water column draft in firebox. The Net I=B=R Ratings shown include allowance for normal piping and pick-up load. The water ratings are based on a piping and pick-up allowance factor of 1.15, steam ratings are based on allowance of 1.33. Burner input is based on a fuel oil with a heating value of 140,000 BTU per gallon. Burner input based on maximum altitudes of 2,000 ft. — for other altitudes consult factory.