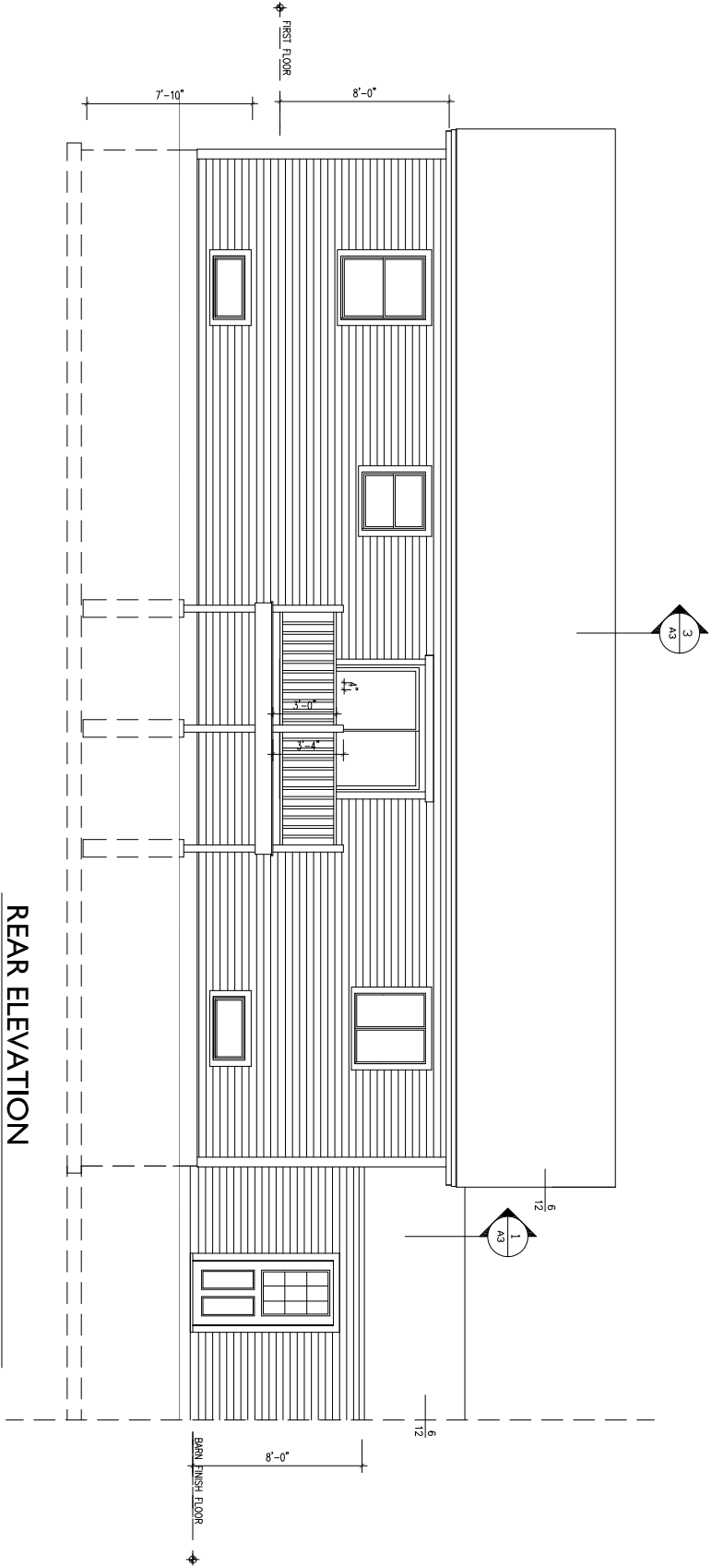
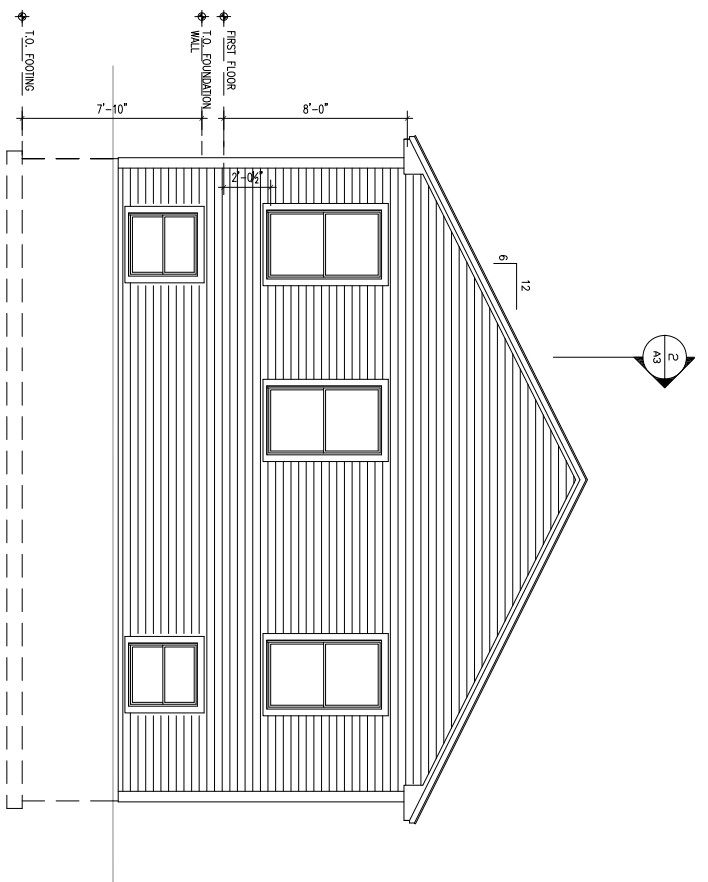


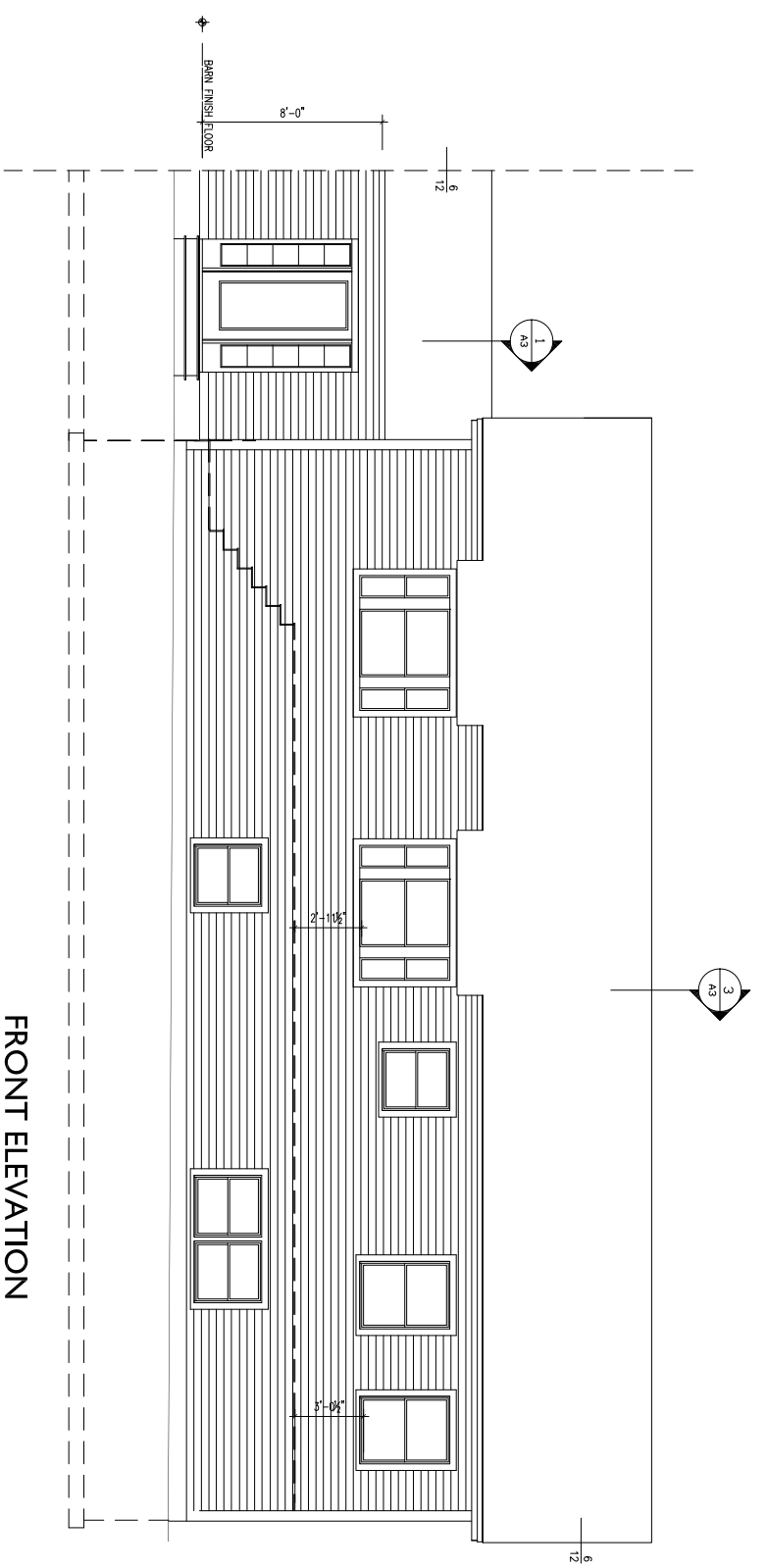
LEFT SIDE ELEVATION/SECTION
1/4" = 1'-0"



REAR ELEVATION
1/4" = 1'-0"



RIGHT SIDE ELEVATION
1/4" = 1'-0"



FRONT ELEVATION
1/4" = 1'-0"

A2	DRAWINGS THIS SHEET	MIKE & PAM MURPHY PORTLAND, MAINE
	ELEVATIONS	