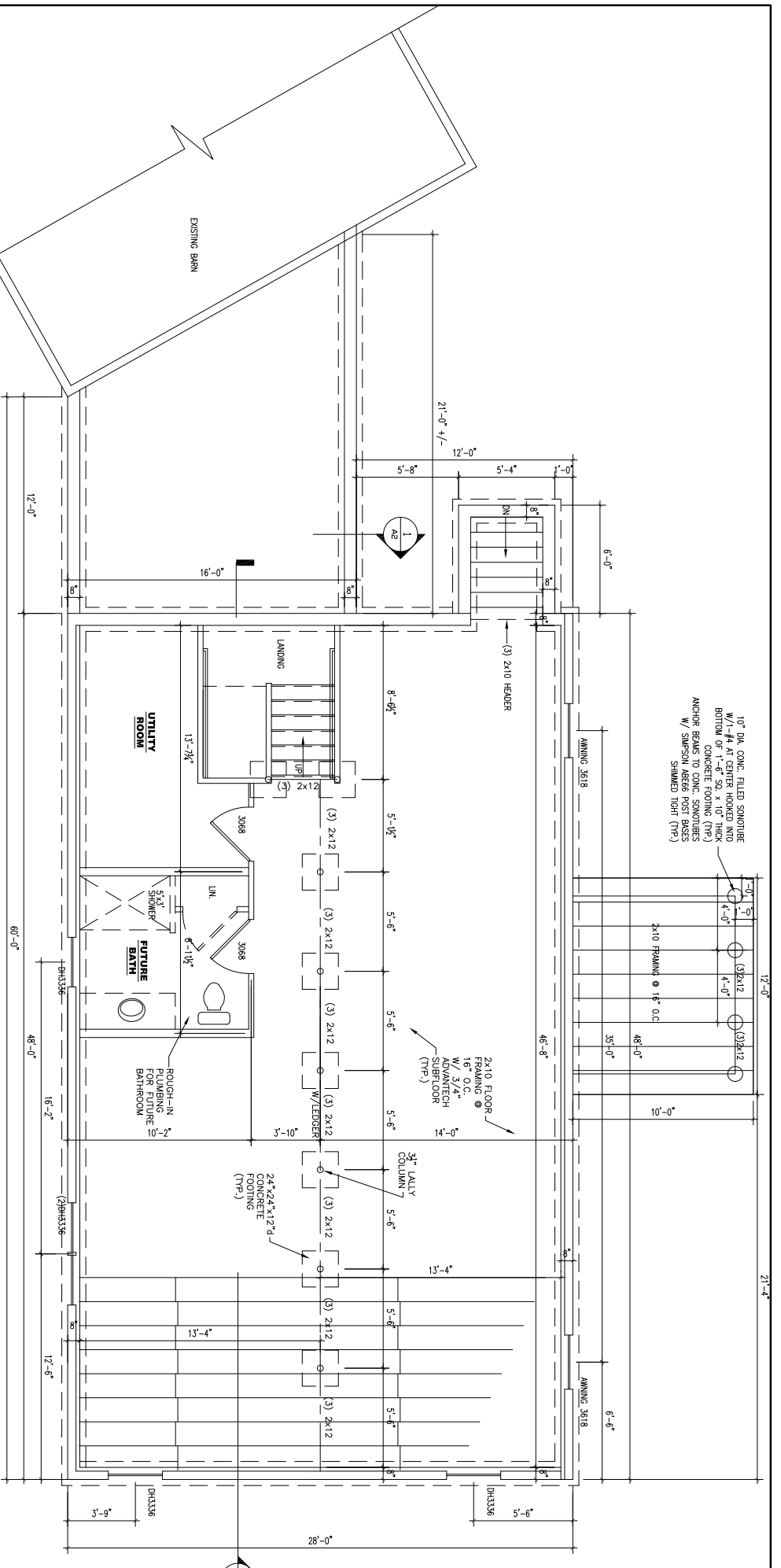


10" DIA. CONC. FILED SONOTUBE W/1-#4 AT CENTER HOOKED INTO BOTTOM OF 1'-6" SQ. X 10" THICK ANCHOR BEAMS TO CONC. FOUNDING (TYP) W/ SIZES AS SHOWN. SHAWED (TYP)



LOWER LEVEL FLOOR PLAN
1/4" = 1'-0"

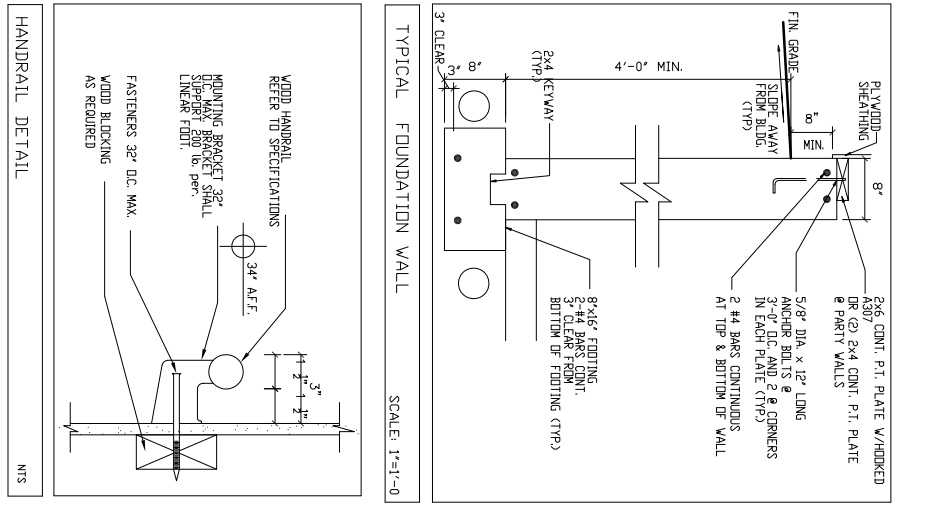
GENERAL NOTES:

- All work shall be in accordance with IBC International Building Code, NFPA-90 National Electric Code, Maine State Plumbing Code, ASHRAE, U.L., NFPA Codes, Americans with Disabilities Act 1990 (ADA) and all local, State and Federal requirements.
- All applicable Federal, State and Municipal Regulations shall be followed, including the Federal Department of Labor Occupational Safety and Health act.
- All required City and State permits must be obtained before any construction begins.
- It is the contractor's sole responsibility to determine erection procedures and sequence to ensure the safety of the building and its components during erection. This includes the addition of necessary shoring, snieeting, temporary bracing, guys or tie-downs. Such material shall remain the property of the contractor after completion of the project.
- Structural, Mechanical, Electrical and Plumbing design and installation by others shall be performed in accordance with local, State and Federal standards.
- All fire ratings indicated shall be continuous to underside of fire rated ceiling or underside of roof deck. Seal all openings & mechanical penetrations with approved fire rating material.
- Building shall have approved smoke detectors in accordance with NFPA-101 Life Safety Code. Smoke detectors shall initiate alarm that is audible in the sleeping rooms of each unit.
- Portable fire extinguishers shall be provided in all hazardous areas in accordance to NFPA-101. Local authority having jurisdiction needs to provide written requirements.
- Balconies must maintain a 42" guardrail height and shall be kept free and clear of ice and snow at all times to ensure the second means of egress.
- Hydrac ventilation to be in accordance with ASHRAE, NFPA-90A, DR NFPA-90B and all Federal, local and State codes. Ventilation or heat equipment shall be in accordance with NFPA-91, NFPA-211, NFPA-31, NFPA-94 and NFPA-70 as applicable.

HEADER SCHEDULE

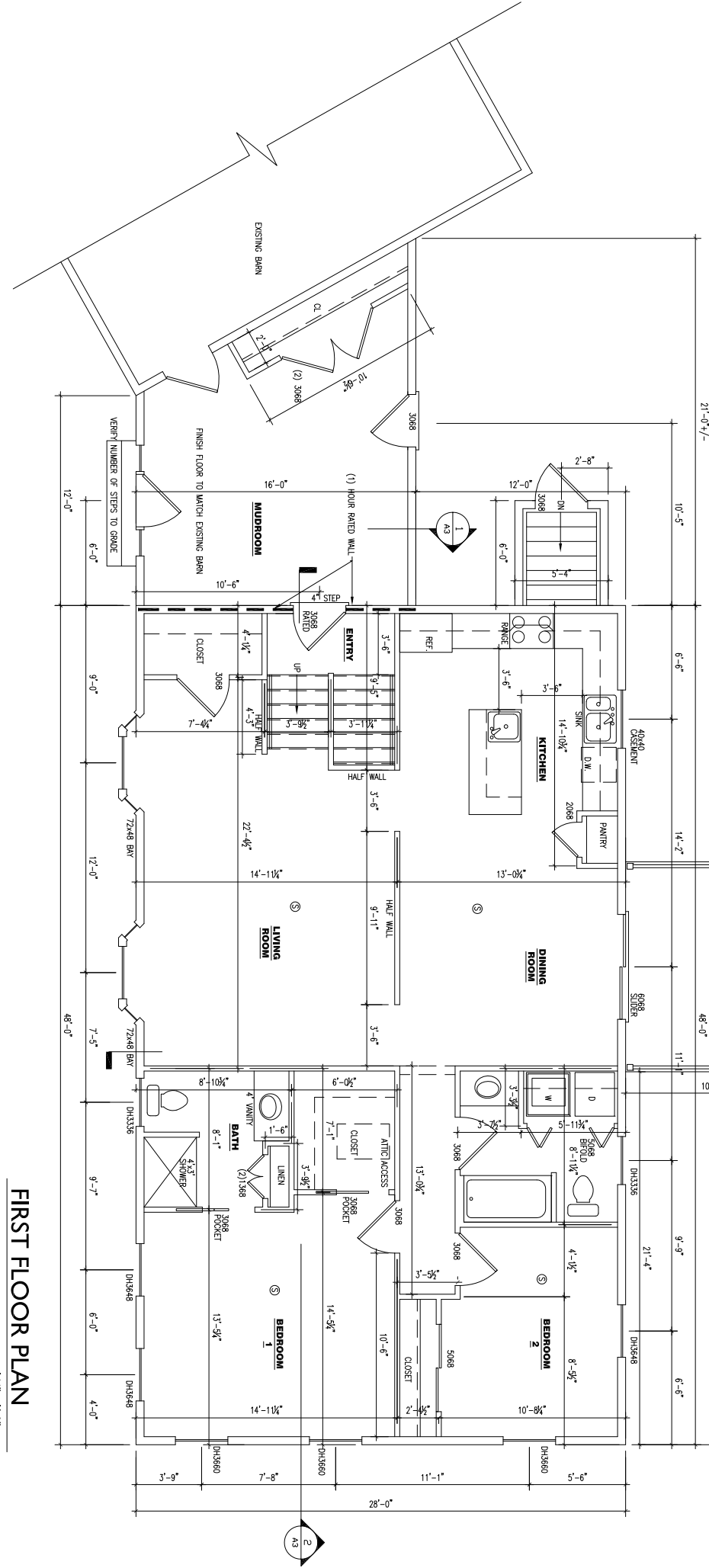
ROUGH OPENING	HEADER SIZE
0 - 3'-0"	(3) - 2x6
3'-1" - 4'-6"	(3) - 2x8
4'-7" - 5'-8"	(3) - 2x10
5'-9" - 7'-0"	(3) - 2x12

NOTE: PROVIDE JAMES BETH ENDS AS FOLLOWS:
 2x6 JACK PLUS SIX KINGS UP TO 4'-6" ROUGH OPENING
 (2) 2x6 JACKS PLUS (2) 2x8 KINGS UP TO 7'-0" ROUGH OPENING



TYPICAL FOUNDATION WALL
SCALE: 1"=1'-0"

HANDRAIL DETAIL
N.T.S.



FIRST FLOOR PLAN
1/4" = 1'-0"