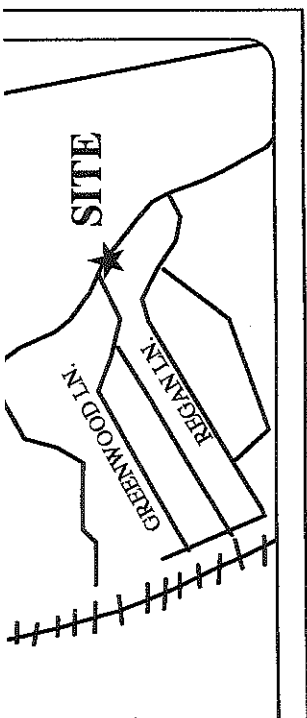


N/E
 POWERS
 12167/201
 TAX MAP 373, BLOCK A, LOT 11

MAG. 2004

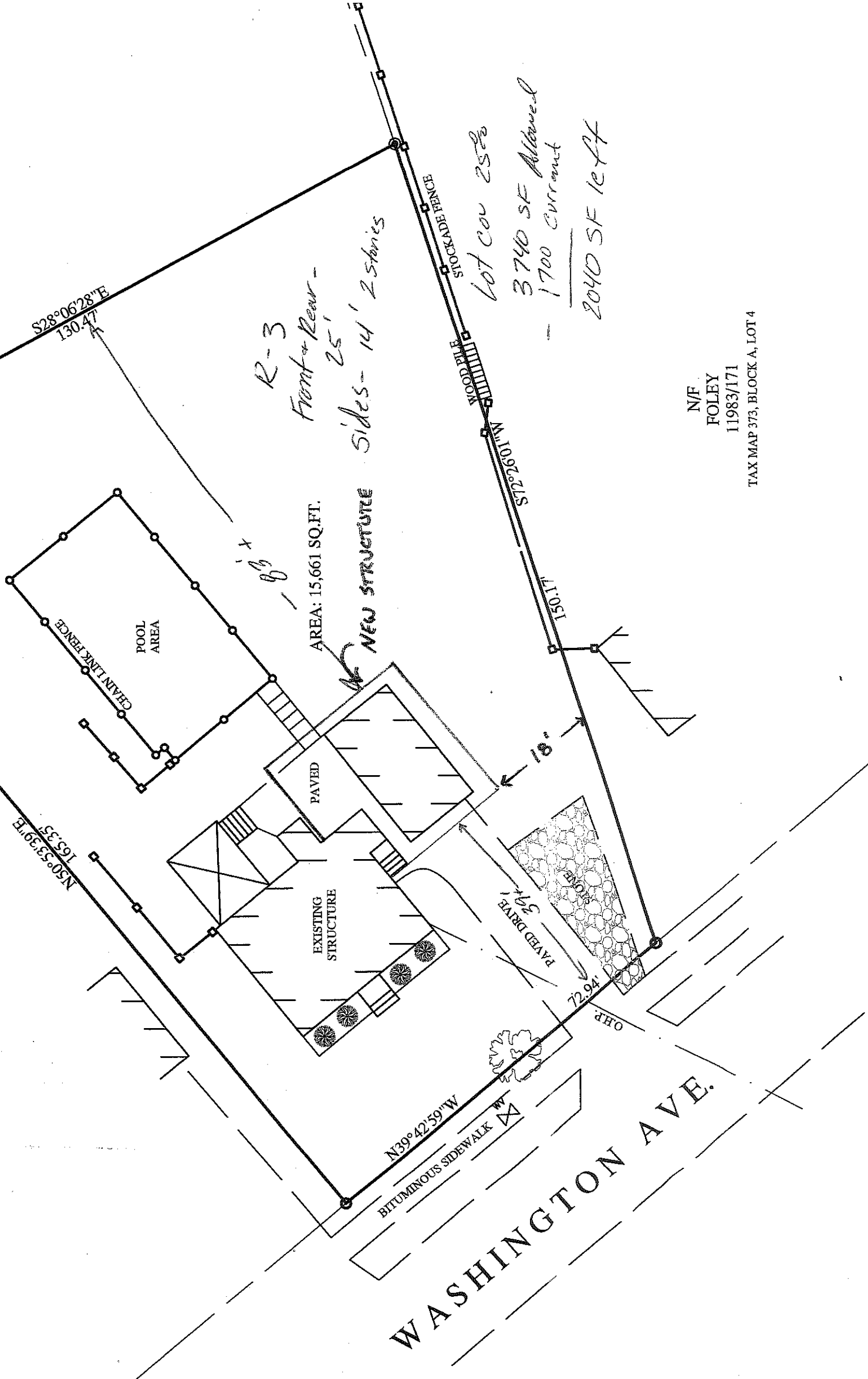


LOCATION MAP

(NOT TO SCALE)

N/F
POWERS
12167/201
TAX MAP 373, BLOCK A, LOT 11

N/F
CITY OF PORTLAND
TAX MAP 373, BLOCK A, LOT
(SEE 372-A-11)



R-3
Front & Rear - 25'
Sides - 14' 2-stories

lot cov 25%
3740 SF Allowed
- 1700 Current
2040 SF left

AREA: 15,661 SQ.FT.

WASHINGTON AVE.

373 A1

REFERENCES:

OK 13663, PAGE 210
LAND COUNTY REGISTRY OF DEEDS

REFERENCES: TAX MAP 373, BLOCK A, LOT 1

REFERENCES: PLAN OF LAND MADE

BY: H.I. AND E.C. JORDAN
DATED: OCTOBER 12, 1949

THIS IS SUBJECT TO EASEMENTS AND/OR RIGHT-OF-RECORD

LEGEND:

WATER VALVE
TREE

IRON PIN FOUND
NO. 5 REBAR SET
NOW OR FORMERLY
DEED BOOK/PAGE
OVER-HEAD UTILITIES

N/F
FOLEY
11983/171
TAX MAP 373, BLOCK A, LOT 4