

QOS BJ's Shed specs

Delivered - Built - Guaranteed

Roof Construction

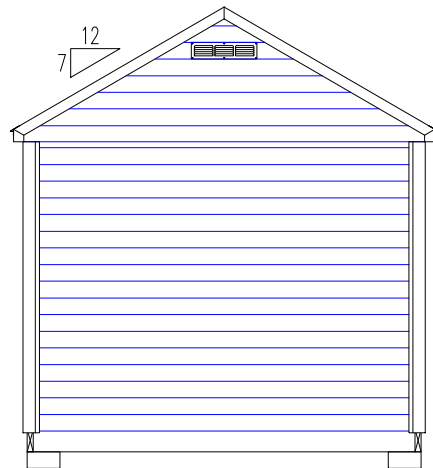
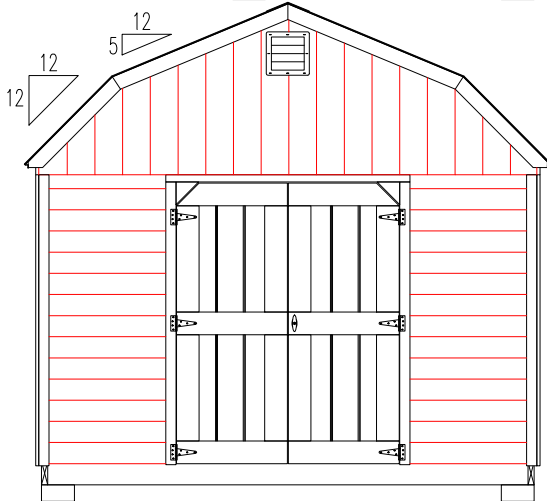
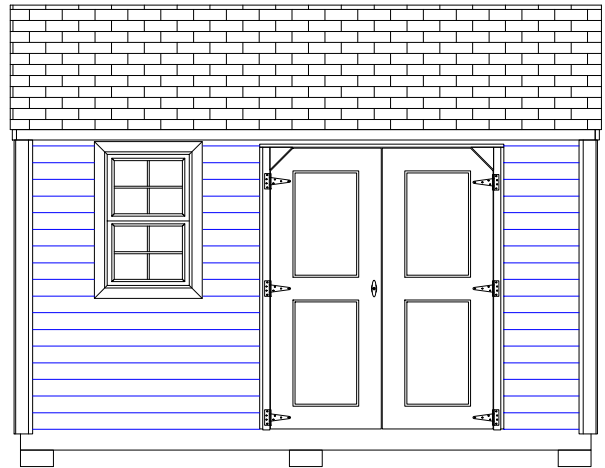
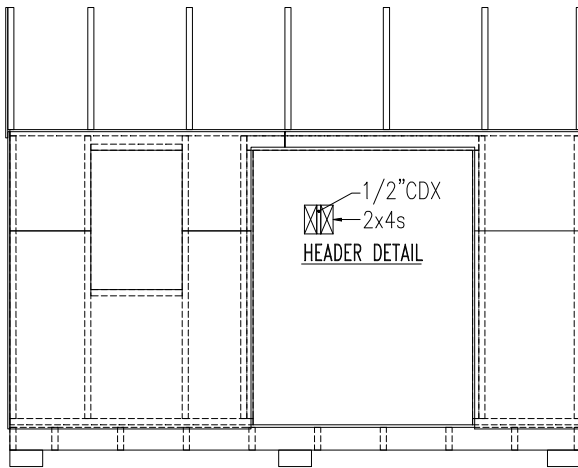
1/2" 5-ply plywood
 2x4 trusses w/TPI plates, 24" on center
 3ft, 3-tab, self-sealing asphalt shingles
Cottage roof pitch is 7/12
 Barn roof pitch is 12/12 at bottom
 changing to 5/12 pitch at the top
 Continuous soffit vents standard
 Optional gable vents available

Roof Height for 6ft tall / 7ft tall

6ft wide Cottage - 8'3" / 9'6"
 8ft wide Cottage - 8'10" / 10'1"
 8ft wide Barn - 9'2" / 10'5"
 10ft wide Cottage - 9'7" / 10'10"
 10ft wide Barn - 9'9" / 11'0"
12ft wide Cottage - 10'6" / 11'9"
 12ft wide Barn - 10'6" / 11'9"
 *add 2" if 2x6 joists

Walls

2x4 construction, 24" on center
 Siding Types:
 Primed shed panel
 Pine (tongue & groove)
 Cedar (tongue & groove)
 Maintenance-Free Vinyl on 1/2" plywood
 6ft wall height - 71-1/2"
Optional 7ft wall height - 86-1/2"



Windows

Single hung wood 23-3/8" x 36-7/8"
 Single hung vinyl 23-1/4" x 36"
 Optional window screens

Doors

Standard 40" double door
 (33" single on 6' x 6' shed)
Optional 54" double door
 Optional 66" double door
 Door height 68"
 opening height 66-1/2"
 Opening widths are 1/2" less than door
 Optional 33" single door
 Optional 7ft wall door height 81-1/2"
 opening 80"

Floor

5/8" plywood
 Optional 5/8" PT plywood
 Floor joists - 16" on center
 2x4* - 6' & 8' wide sheds
 (*optional upgrade to PT 2x6 at 12" on center)
2x6* - 10' & 12' wide sheds
 (*optional upgrade to PT 2x6 at 12" on center)
 Concrete block supports
 PT 4x4 runner under center of 12' gable width sheds only

Note: Options may not be available for all sheds. Call your Distributor or QOS for more information.