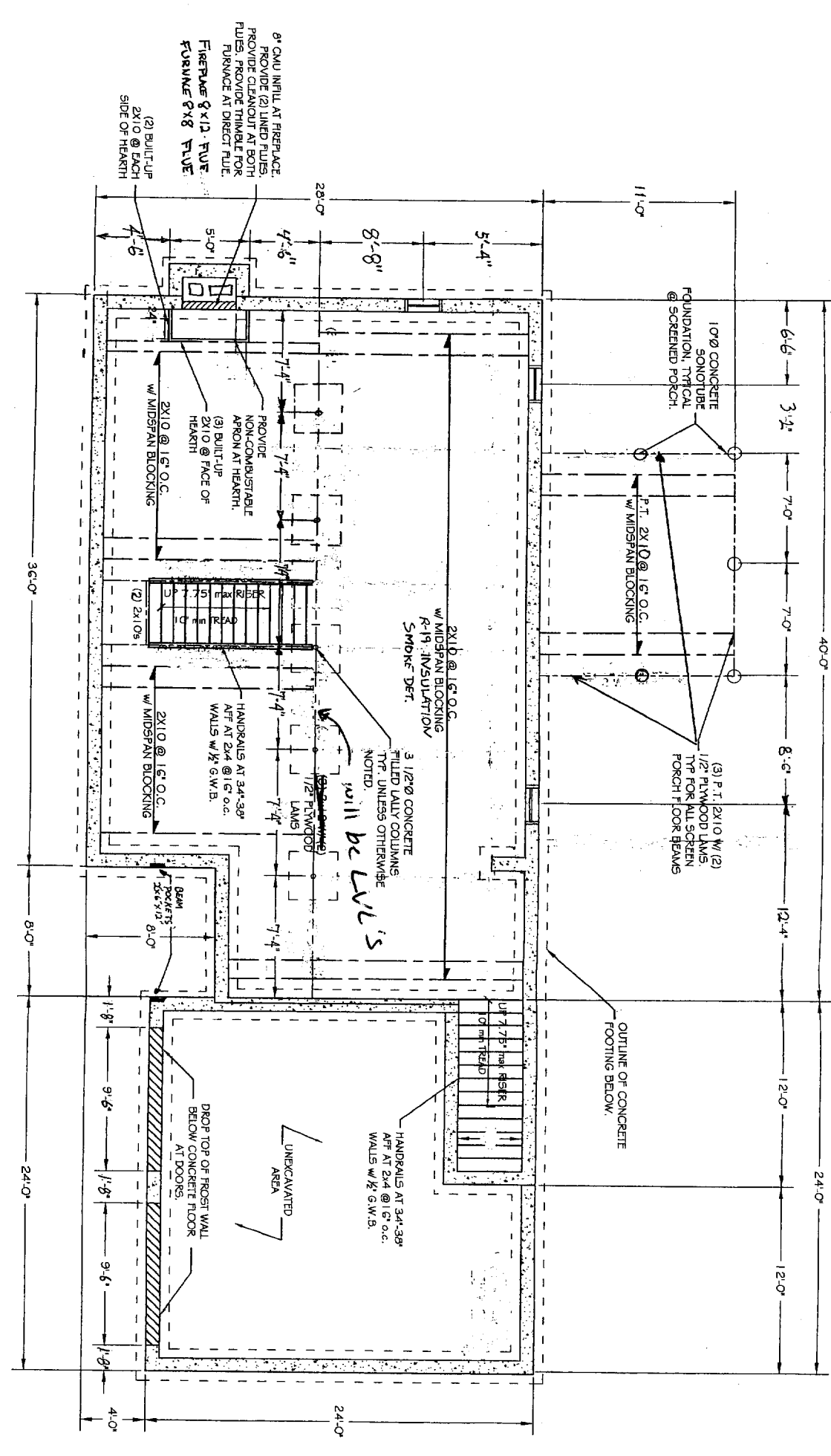


THIS P.E. REVIEW COVERS STRUCTURAL FRAMING MEMBERS SIZES FOR NEW OR MODIFIED STRUCTURE ONLY. DESIGN AND DETAIL FOR FOUNDATION ELEMENTS, FRAMING CONNECTIONS (UNLESS OTHERWISE NOTED), COMPONENTS AND CLADDING, FINISHES, FLOOR PLAN LAYOUT, AND LIFE SAFETY CODE REQUIREMENTS HAVE NOT BEEN REVIEWED AND ARE BEYOND THE PURVIEW OF THIS P.E. SEAL.



FIRST FLOOR FRAMING PLAN

- NOTES:
1. ALL P.S.'S ARE 2 O.E. PARALLAM UNLESS OTHERWISE NOTED.
  2. ALL LVL'S ARE 1.9E MICROLAM LVL'S UNLESS OTHERWISE NOTED.
  3. ALL SPECIFIED HEADER POSTS ARE JACK STUDS. \* SHOULD EXTEND TO THE UNDERSIDE OF HEADER. CONTRACTOR SHOULD PROVIDE (1) 2x KING STUD. QUANTITY OF 2x BUILT-UP POSTS ARE NUMBER NOTED.
  4. REQ'D @ EACH END OF HEADER UNLESS OTHERWISE NOTED.
  5. GENERAL CONTRACTOR TO COMPLY WITH BOCA 1999 TABLE 2303.2 FASTENING SCHEDULE.
  6. PROVIDE 2x6 CONTINUOUS PRESSURE TREATED WOOD SILL AT OP CONTINUOUS SILL SEAL AND ANCHORED TO THE FOUNDATION W/ 1/2"Ø x 12" LONG ANCHOR BOLTS @ 48" O.C. AND WITHIN 12" OF FOUNDATION CORNERS.

REVISIONS		
No.	BY	DESCRIPTION

PROJECT: FOR: VESTA. CORP.

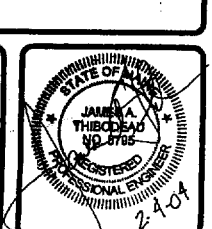
SHEET TITLE: FOUNDATION PLAN

THIS DRAWING, DESIGN AND SPECIFICATIONS ARE THE PROPERTY OF ASSOCIATED DESIGN PARTNERS INC. NO PART OF THIS DRAWING OR SPECIFICATIONS MAY BE REPRODUCED OR TRANSMITTED IN ANY FORM OR BY ANY MEANS WITHOUT PERMISSION.

**ASSOCIATED DESIGN PARTNERS INC.**

80 Leighton Road  
Falmouth, Maine 04105

Office: (207) 878-1751  
Fax: (207) 878-1788  
E-Mail: adp@adpengineering.com



DATE: 02/02/04  
SCALE: 1/4"=1'-0"  
DESIGN BY: GMB  
DRAWN BY: AL

PROJECT NUMBER: 04009  
SHEET NO.: S101