

OWNER / DEVELOPER  
**MORRISON CENTER**  
60 CHAMBERLAIN ROAD  
SCARBOROUGH, ME  
04070

PROJECT TITLE  
**MORRISON CENTER - PORTLAND**  
481 RIVERSIDE INDUSTRIAL PARKWAY  
PORTLAND, MAINE

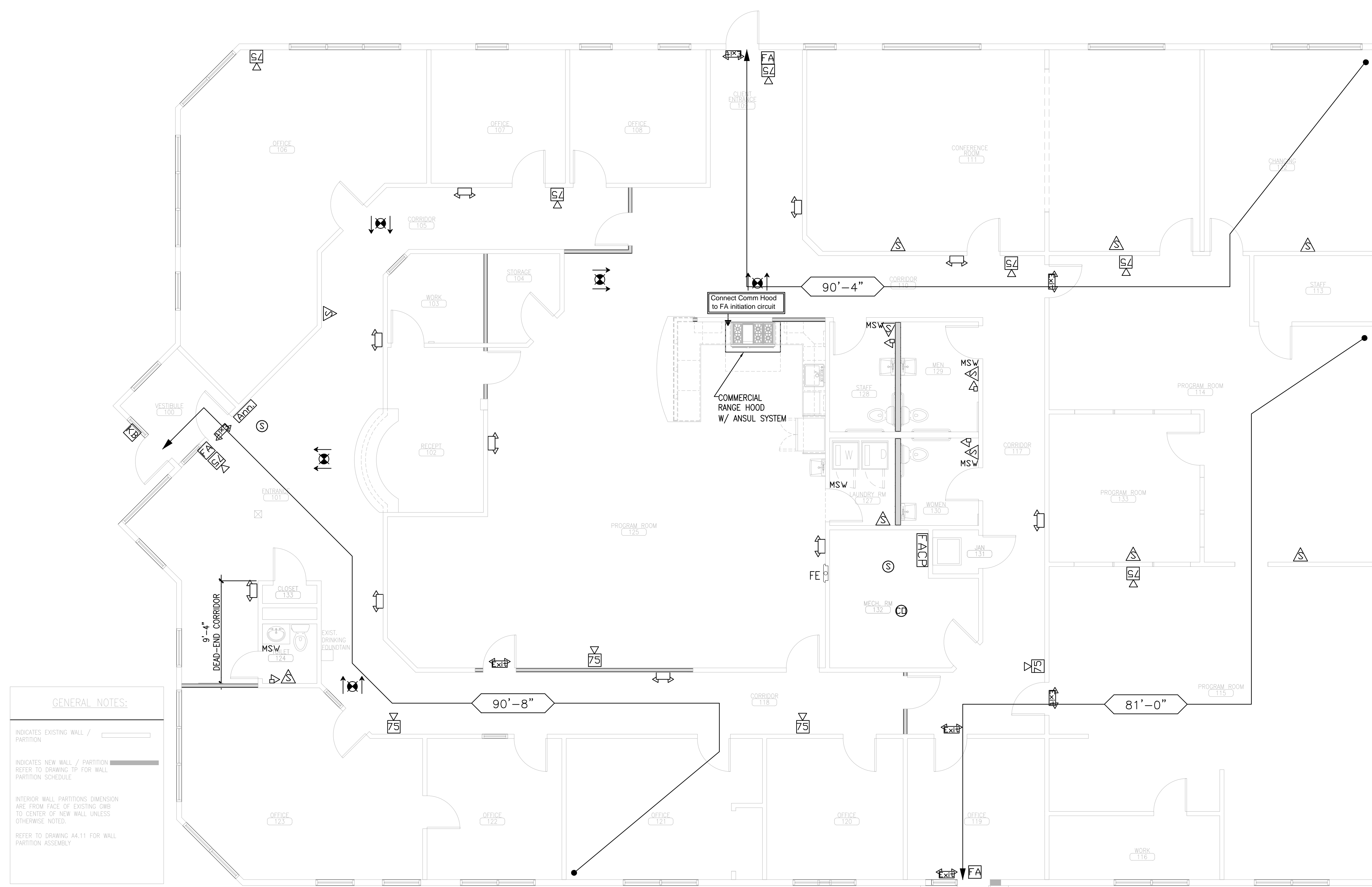
DRAWING TITLE  
**LIFE SAFETY FLOOR PLAN**  
CWS PROJ. NO.: 15001

REVISION DESCRIPTION	DATE

DRAWING NUMBER

**LS1.01**

SCALE: 3/16" = 1'-0"  
DATE: 03/31/2015



**PROPOSED USE:**  
IBC 2009: BUSINESS GROUP B  
NFPA 101 (2009): EXISTING BUSINESS OCCUPANCIES

**EXISTING SQUARE FOOTAGE OF FLOOR:**  
8,420 SF

**SQUARE FOOTAGE OF RENOVATED SPACE:**  
8,420 SF

**FIRE SUPPRESSION:**  
EXISTING BUILDING WITH A 13 SPRINKLER SYSTEM

**SYMBOLS LEGEND:**

- X'-XX" EXIT ACCESS TRAVEL DISTANCE
- NEW WALL
- FACP** FIRE ALARM CONTROL PANEL
- Ann.** FIRE ALARM ANNUNCIATOR
- FIRE ALARM CO DETECTOR
- FA** FIRE ALARM PULL STATION
- FIRE ALARM SMOKE DETECTOR
- FIRE ALARM STROBE-ONLY
- FIRE ALARM HORN-STROBE
- KB** FIRE ALARM KNOX BOX
- EXIT/EMERGENCY COMBINATION
- EXIT SIGN (WITH DIRECTIONAL ARROWS)
- EMERGENCY LIGHT
- EMERGENCY LIGHT REMOTE HEAD

**GENERAL NOTES:**

- INDICATES EXISTING WALL / PARTITION
- INDICATES NEW WALL / PARTITION REFER TO DRAWING TP FOR WALL PARTITION SCHEDULE
- INTERIOR WALL PARTITIONS DIMENSION ARE FROM FACE OF EXISTING GNB TO CENTER OF NEW WALL UNLESS OTHERWISE NOTED.
- REFER TO DRAWING A4.11 FOR WALL PARTITION ASSEMBLY

LIFE SAFETY DRAWING  
BY SEABEE ELECTRIC INC.

