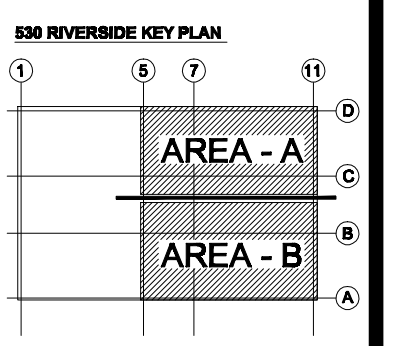


1 FIRST FLOOR PLAN - PART B
P-2
 1/4" = 1'-0"

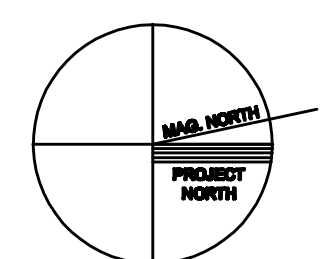
- KEY NOTES**
- ① REMOVE ABANDONED PIPING
 - ② 1" INDIRECT WASTE FOR HEAT PUMPS
 - ③ 3/4" CONDENSATE TO HEAT PUMPS, HP-1
 - ④ 3/4" MAKE-UP WATER (CWM-1) FOR MECHANICAL SYSTEMS WITH 3/4" RPZ BACKFLOW PREVENTER. PIPE VENT TO FLOOR DRAIN.
 - ⑤ PROVIDE ALTERNATE PRICE FOR DUPLEX SEWAGE SYSTEM. LIBERTY PUMP MODEL 1102/LE41M: 4/10 HP; 115 V, SINGLE PHASE

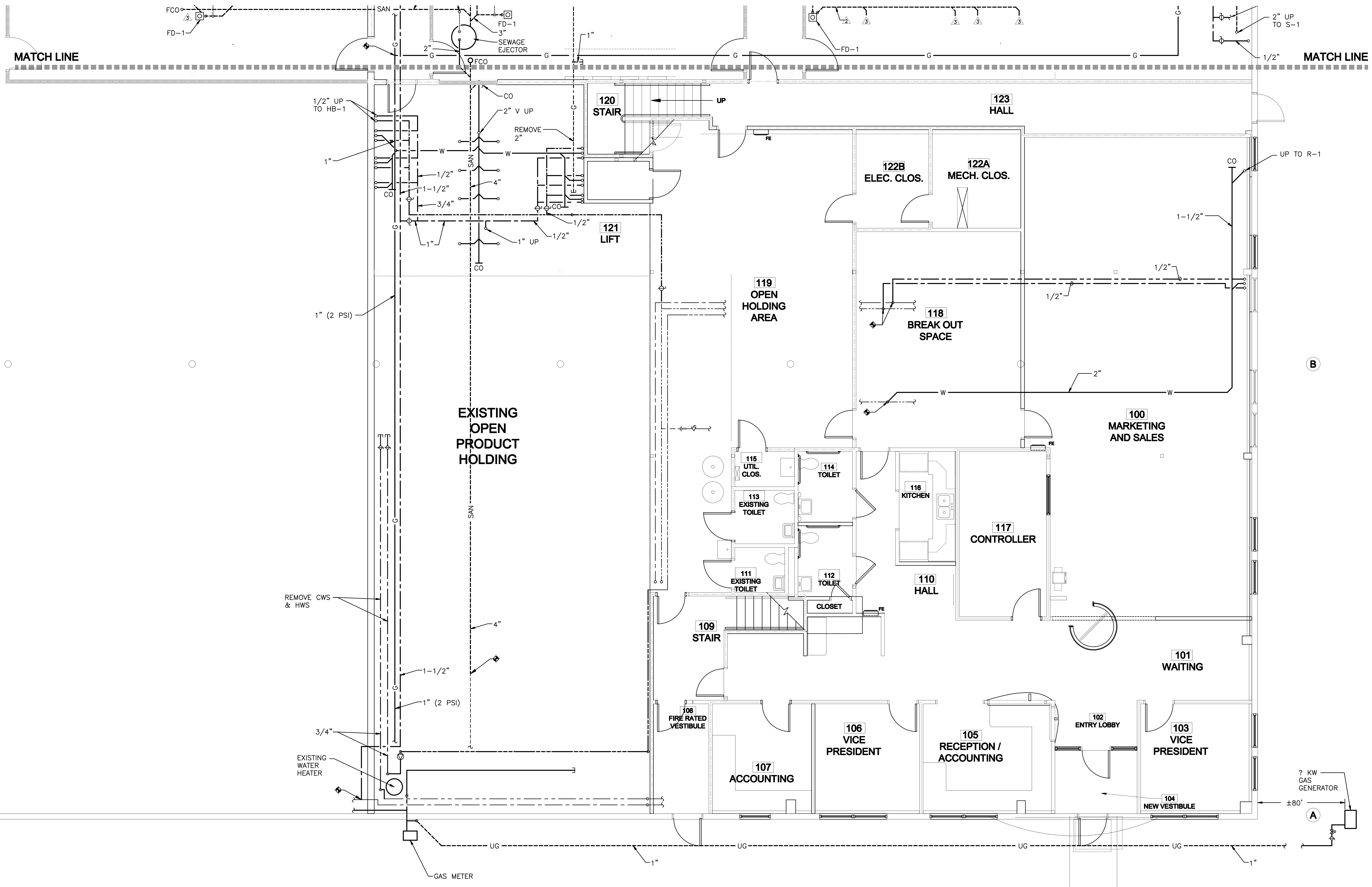


REVISIONS:

DATE: 8/17/11
 PROJECT No. 1026A
 DRAWN BY: AZZ
 CHECKED BY: RPG
 SCALE: AS NOTED

SHEET TITLE:
 FIRST FLOOR
 PLAN - PART A
 PLUMBING





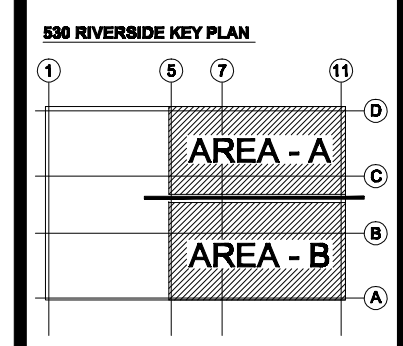
1 FIRST FLOOR PLAN - PART A
P-3 1/4" = 1'-0"

© 2011 TFH ARCHITECTS

EnviroLogix
RIVERSIDE CAMPUS
530 - DNA EXPANSION
PORTLAND, MAINE

TFH ARCHITECTS
80 MIDDLE STREET
PORTLAND MAINE 04101
TELEPHONE 207 775 6141
ARCHITECTURE PLANNING

CONSULTANTS:
STRUCTURAL: **Becker Structural Engineers, Inc.**
75 York Road
Portland, ME 04101-4400
207-775-1838
MECHANICAL: **Integrated Energy Systems, PLLC**
110 Middle Road
Falmouth, ME 04105
207-751-6200
ELECTRICAL: **BENNETT ENGINEERING**
7 Bennett Road
Falmouth, ME 04102
207-860-9475



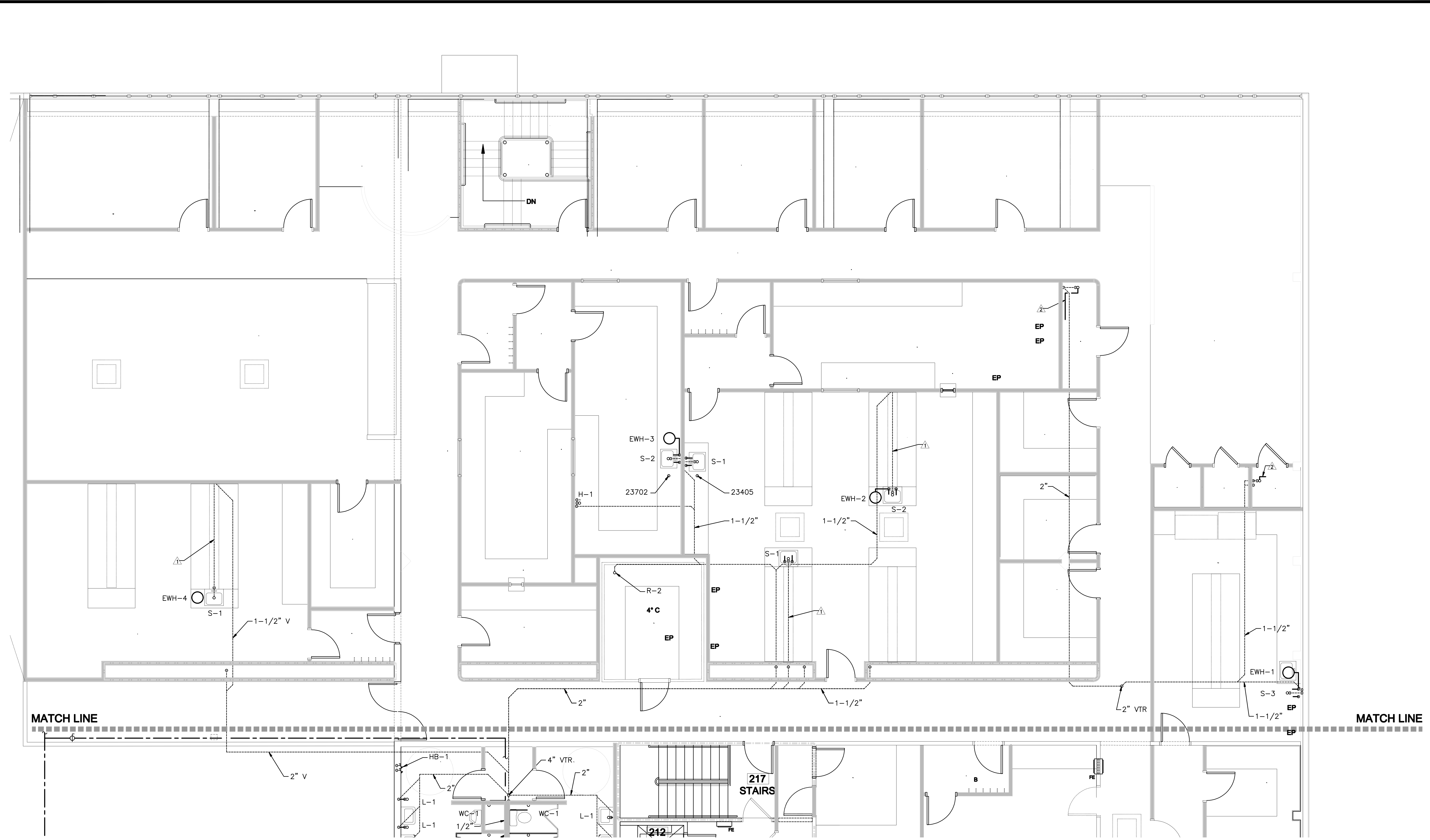
REVISIONS:

DATE: 8/17/11
PROJECT No. 1026A
DRAWN BY: AZZ
CHECKED BY: RPG
SCALE: AS NOTED

SHEET TITLE:
FIRST FLOOR
PLAN - PART B
PLUMBING

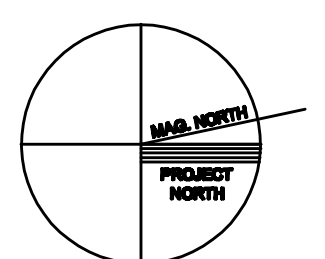
P-3

8/17/2011 10:17:24 AM



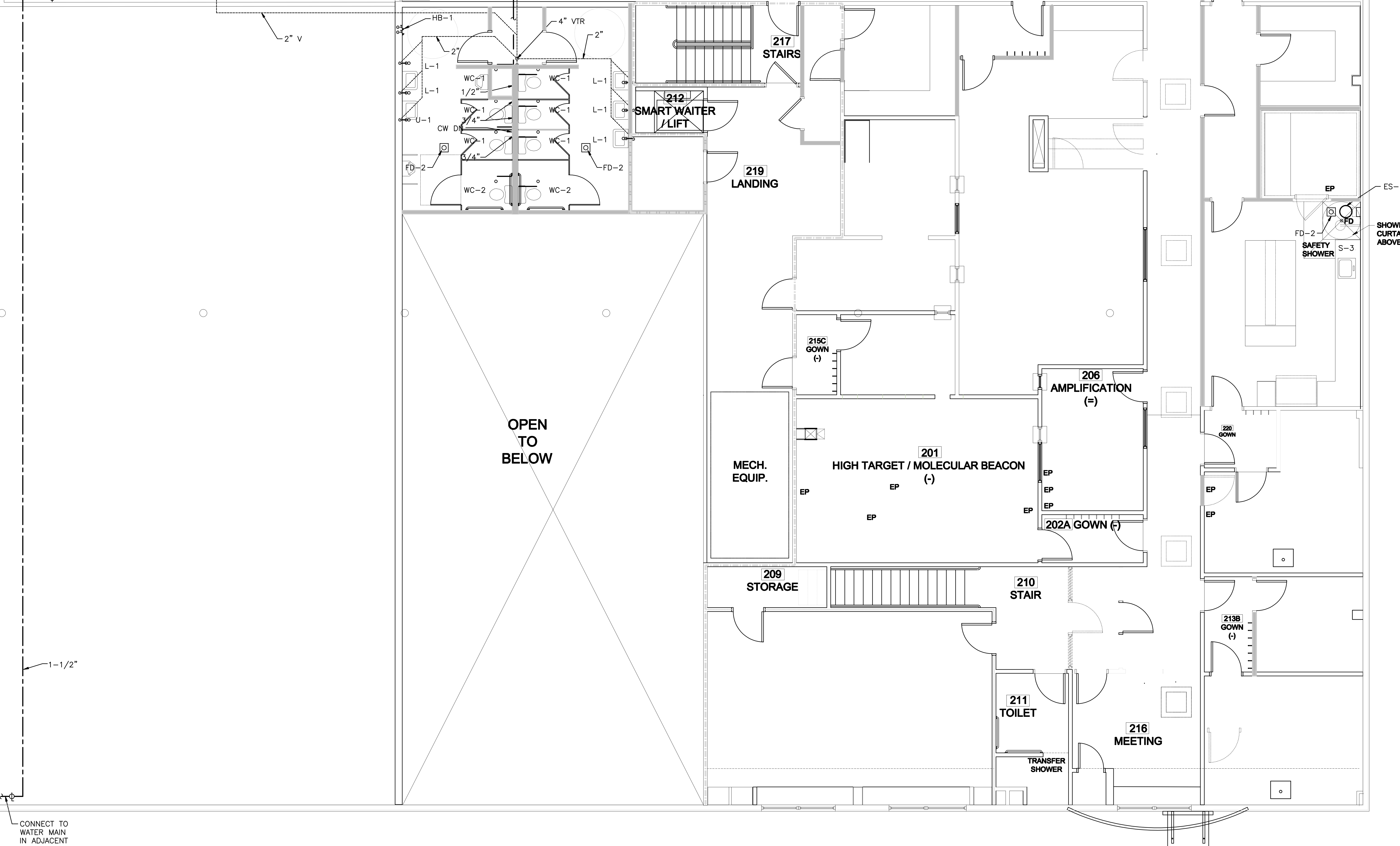
1 SECOND FLOOR PLAN - PART A
P-4 1/8" = 1'-0"

KEY NOTES
▲ 1-1/2" ISLAND VENT UNDER COUNTER



MATCH LINE

MATCH LINE



OPEN TO BELOW

CONNECT TO WATER MAIN IN ADJACENT ROOM

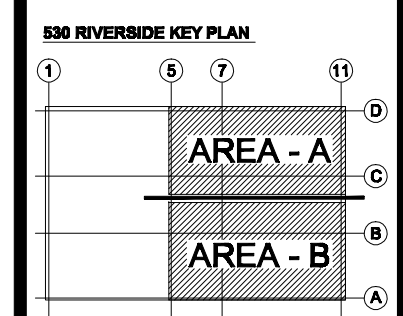
1 SECOND FLOOR PLAN - PART B
P-5 1/4" = 1'-0"

© 2011 TFH ARCHITECTS

EnviroLogix
RIVERSIDE CAMPUS
530 - DNA EXPANSION
PORTLAND, MAINE

TFH ARCHITECTS
80 MIDDLE STREET
PORTLAND MAINE 04101
TELEPHONE 207 775 6141
ARCHITECTURE PLANNING

CONSULTANTS:
STRUCTURAL:
Dexter Structural Engineers, Inc.
75 York Road
Portland, ME 04101-4400
207-879-1808
MECHANICAL:
Integrated Energy Systems, PLLC
110 Middle Road
Portland, ME 04106
207-551-6200
ELECTRICAL:
BENNETT ENGINEERING
7 Bennett Road
Portland, ME 04102
207-860-9475



REVISIONS:

DATE: 8/17/11
PROJECT No. 1026A
DRAWN BY: AZZ
CHECKED BY: RPG
SCALE: AS NOTED

SHEET TITLE:
SECOND FLOOR
PLAN - PART B
PLUMBING

P-5

8/17/2011 10:25:38 AM