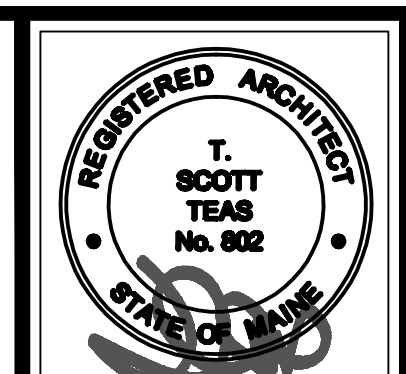


1 FIRST FLOOR PLAN - PART A  
1/4" = 1'-0"

WALL LEGEND	
NEW WALL	
EXISTING WALL	

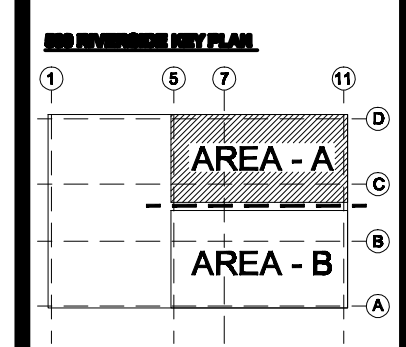


© 2011 TRH ARCHITECTS

**EnviroLogix**  
RIVERSIDE CAMPUS  
530 - DNA EXPANSION  
PORTLAND, MAINE

TRH ARCHITECTS  
60 MIDDLE STREET  
PORTLAND MAINE 04101  
TELEPHONE 207 776 6141  
ARCHITECTURE PLANNING

CONSULTANTS:  
 STRUCTURAL: [unreadable]  
 MECHANICAL: [unreadable]  
 ELECTRICAL: [unreadable]  
 PLUMBING: [unreadable]  
 CIVIL: [unreadable]  
 LANDSCAPE: [unreadable]  
 INTERIOR: [unreadable]  
 EXTERIOR: [unreadable]

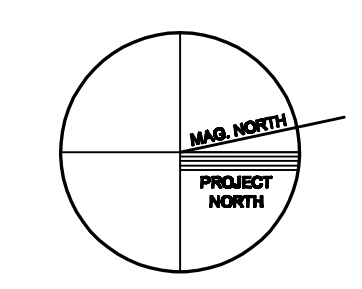


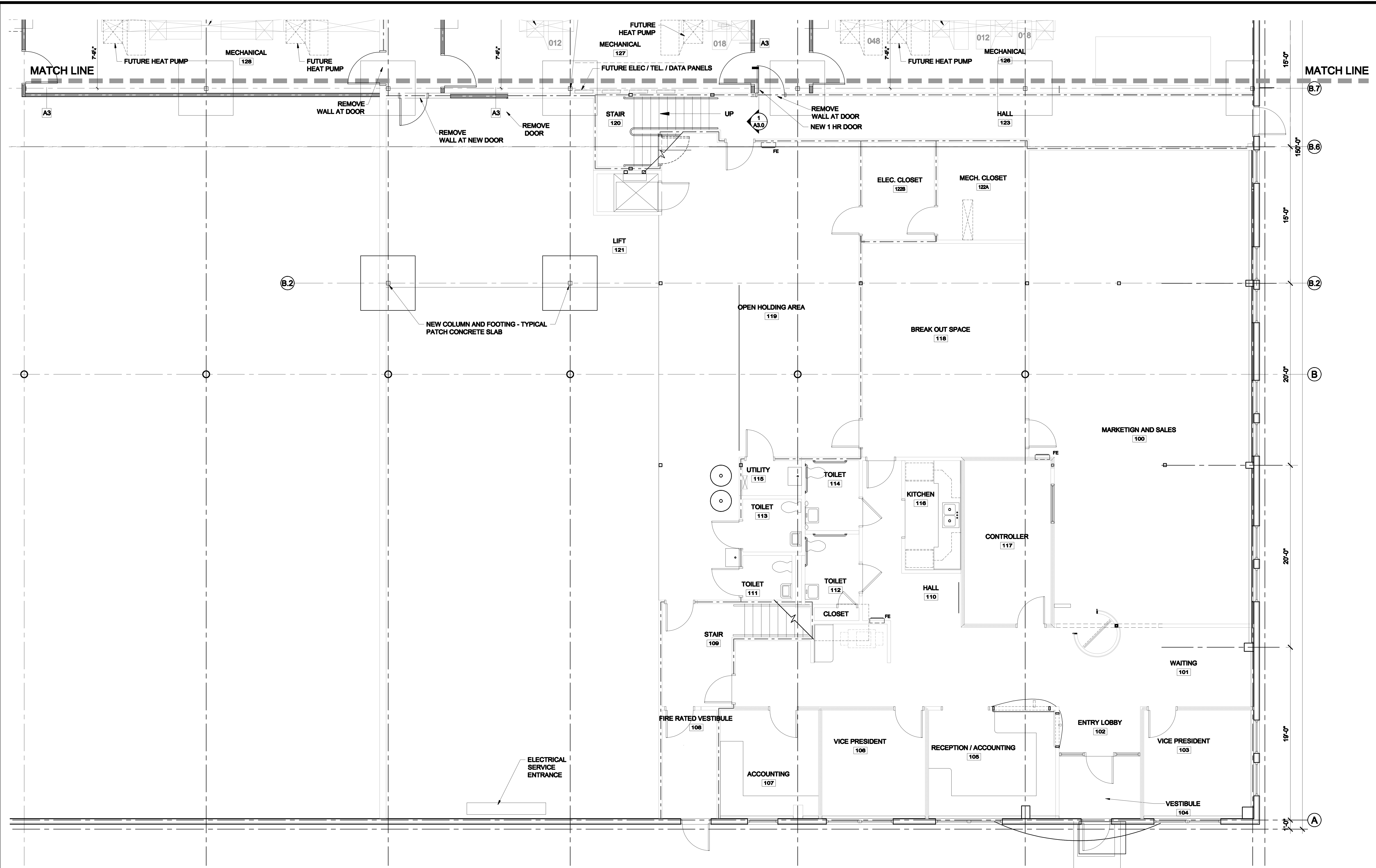
REVISIONS:

DATE: 8/17/11  
PROJECT No.: 1028A  
DRAWN BY: DAM/RJS  
CHECKED BY: TST  
SCALE: AS NOTED

SHEET TITLE:  
FIRST FLOOR  
PLAN - PART A

A1.1A



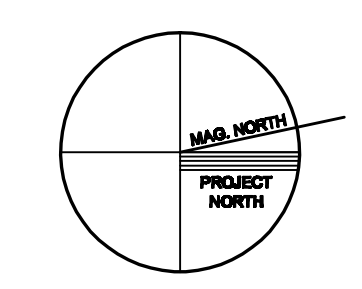


EXISTING FLOOR PLAN (NO LAYOUT MODIFICATIONS)

1 FIRST FLOOR PLAN - PART B  
 A1.1B 1/4" = 1'-0"

**WALL LEGEND**

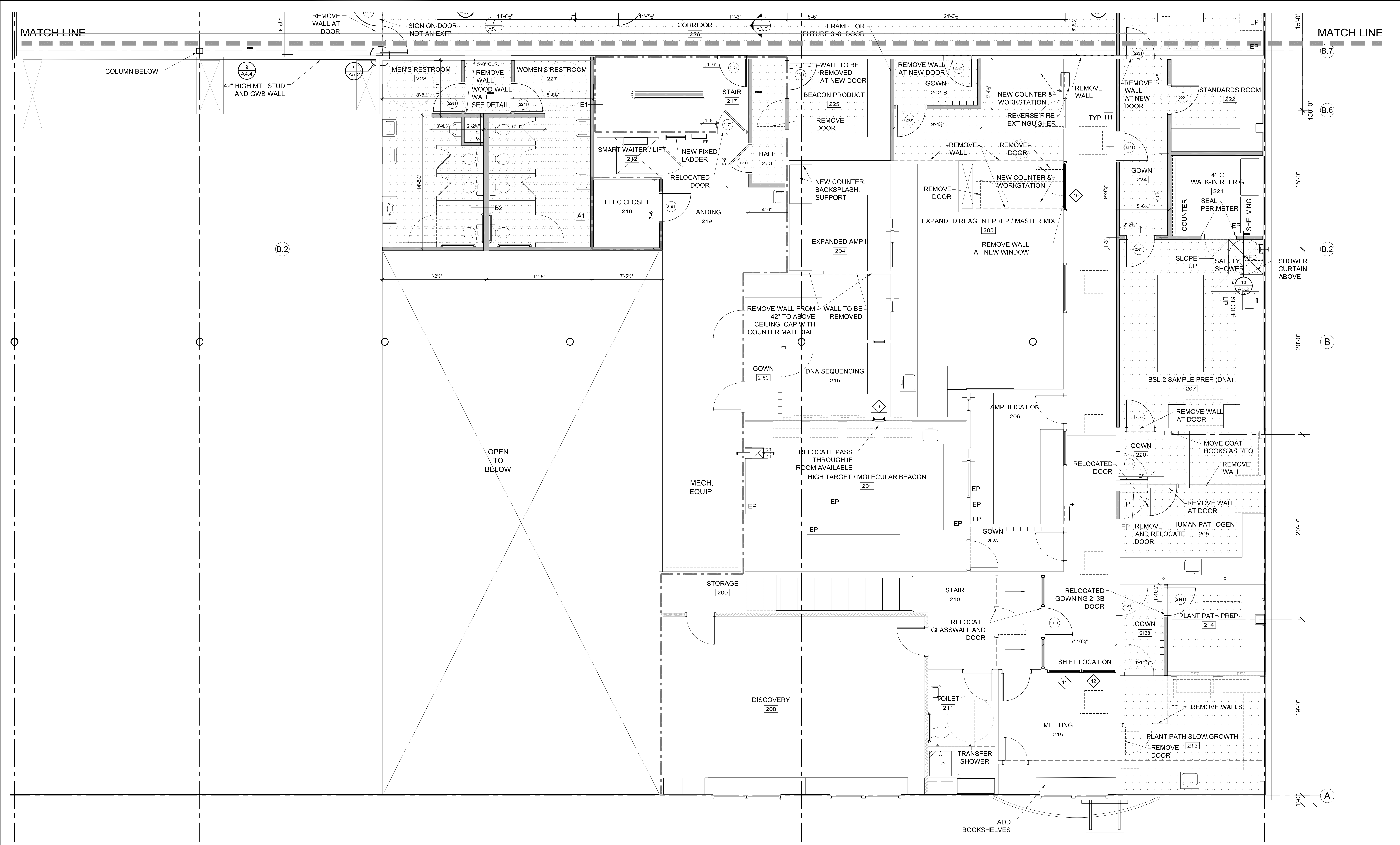
NEW WALL	
EXISTING WALL	







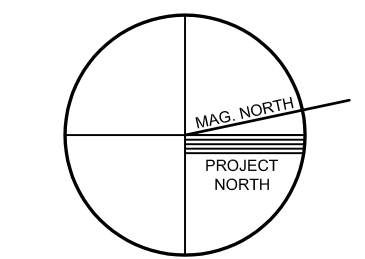




1 SECOND FLOOR PLAN - PART B  
A1.2B 1/4" = 1'-0"

FLOORING LEGEND	
CARPET	
SHEET FLOORING	

WALL LEGEND	
NEW WALL	
EXISTING WALL	

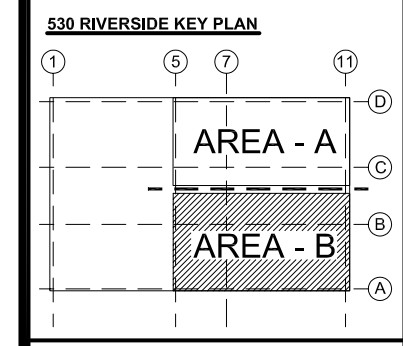


© 2011 TFH ARCHITECTS

**EnviroLogix**  
RIVERSIDE CAMPUS  
530 - DNA EXPANSION  
PORTLAND, MAINE

TFH ARCHITECTS  
80 MIDDLE STREET  
PORTLAND MAINE 04101  
TELEPHONE 207 775 6141  
ARCHITECTURE PLANNING

**CONSULTANTS:**  
STRUCTURAL: Baker Structural Engineers, Inc.  
70 York Street  
Portland, ME 04101-4450  
207-633-1538  
MECHANICAL: Integrated Energy Systems, LLC  
310 Middle Road  
Farmville, ME 04105  
207-791-4203  
ELECTRICAL: SAFETY ENGINEERING  
1000 Main Street  
Portland, ME 04102  
207-655-9475



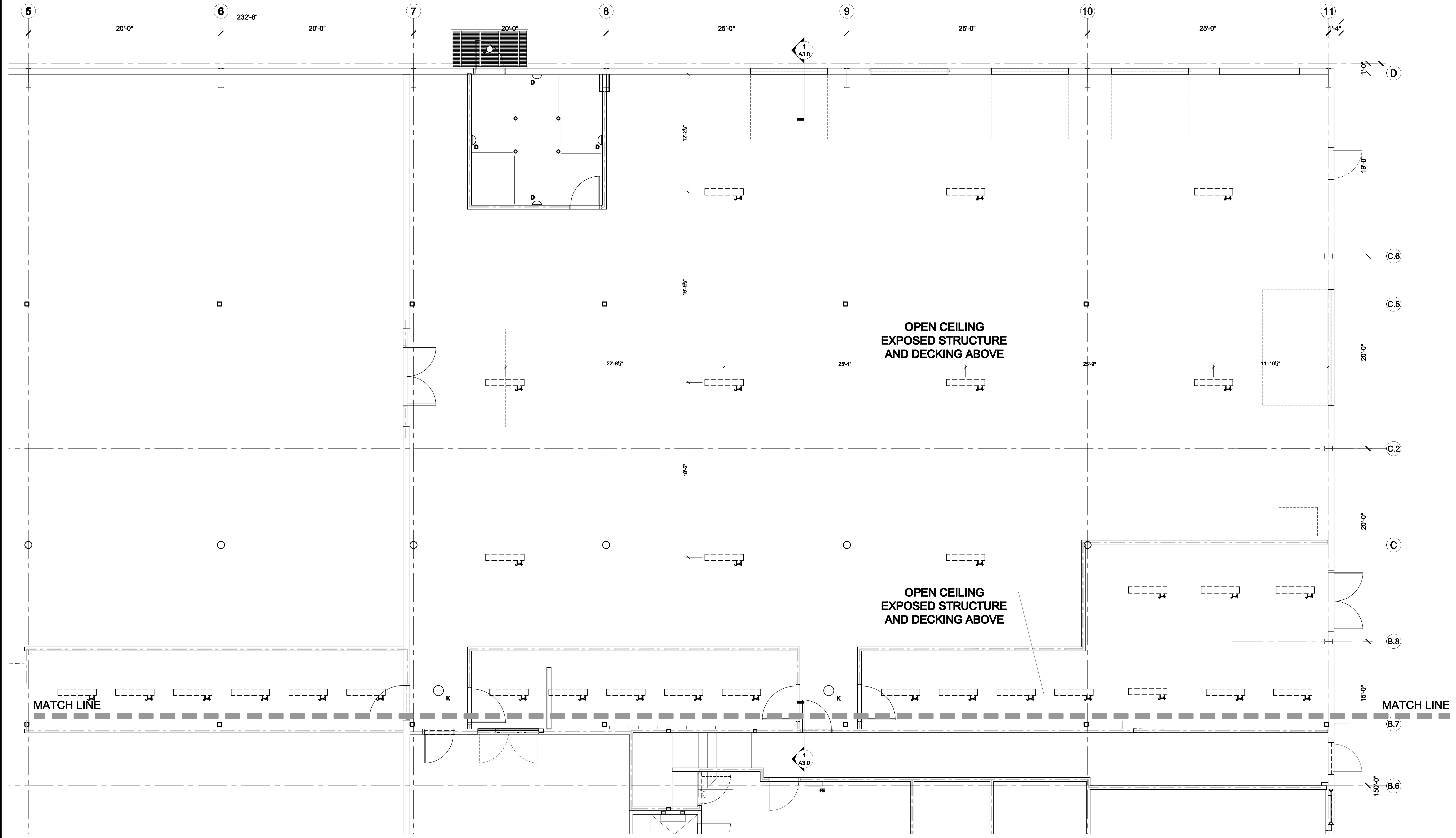
REVISIONS:

DATE: 8/17/11  
PROJECT No. 1026A  
DRAWN BY: DAM,RJS  
CHECKED BY: TST  
SCALE: AS NOTED

SHEET TITLE:  
SECOND FLOOR  
PLAN - PART B

**A1.2B**



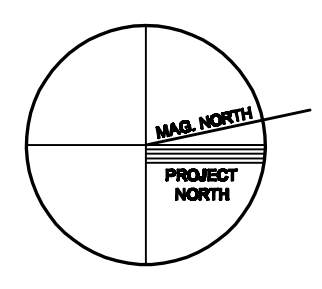


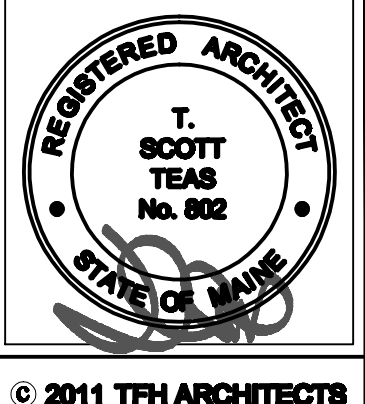
1 FIRST FLOOR REFLECTED CEILING PLAN - PART A  
1/4" = 1'-0"

REFLECTED CEILING PLAN LEGEND GENERAL	
SYMBOL	DESCRIPTION
	HVAC DIFFUSERS SEE MECHANICAL PLANS FOR SIZE AND TYPE
	CONCEPTUAL SPRINKLER HEAD FINAL DESIGN BY INSTALLER
	2 x 4 ACOUSTICAL CEILING TILE AS INDICATED

REFLECTED CEILING PLAN LEGEND LIGHTING COORDINATE W/ ELECTRICAL PLANS		
SYMBOL	DESCRIPTION	
	PENDANT LINEAR	+
	SURFACE LINEAR	+
	SURFACE	+
	RECESSED	+
	WALL WASHER	+
	WALL SCONCE	+
	PENDANT	+
	ARM MOUNTED WALL WASHER	+
	LINEAR WALL SCONCE	+
	EXIT LIGHTS/DIRECTION	+
	EMERGENCY LIGHTS (SEE ELEC PLANS)	+

**REFLECTED CEILING PLAN NOTES**  
1.) GENERAL CONTRACTOR TO CONFIRM IN FIELD, ALL EXISTING PRIMARY STEEL 'BENT' ELEVATIONS WITH PROPOSED CEILING ELEVATIONS AND CONTACT ARCHITECT WITH ANY CONFLICTS PRIOR TO CONSTRUCTION



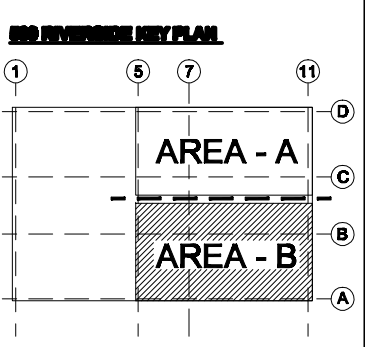


© 2011 TFH ARCHITECTS

**EnviroLogix**  
 RIVERSIDE CAMPUS  
 530 - DNA EXPANSION  
 PORTLAND, MAINE

**TFH ARCHITECTS**  
 80 MIDDLE STREET  
 PORTLAND MAINE 04101  
 TELEPHONE 207 776 6141  
 ARCHITECTURE PLANNING

**CONSULTANTS:**  
**MECHANICAL:**  
 T. Scott Teas, Inc.  
 17 Park Street  
 Portland, ME 04101-4800  
 400-450-0000  
**ELECTRICAL:**  
 Integrated Energy Systems/PLS  
 200 Maine Street  
 Portland, ME 04101  
 207-761-0000  
**STRUCTURAL:**  
 T. Scott Teas, Inc.  
 17 Park Street  
 Portland, ME 04101-4800  
 400-450-0000



REVISIONS:

DATE: 8/17/11

PROJECT No. 1028A

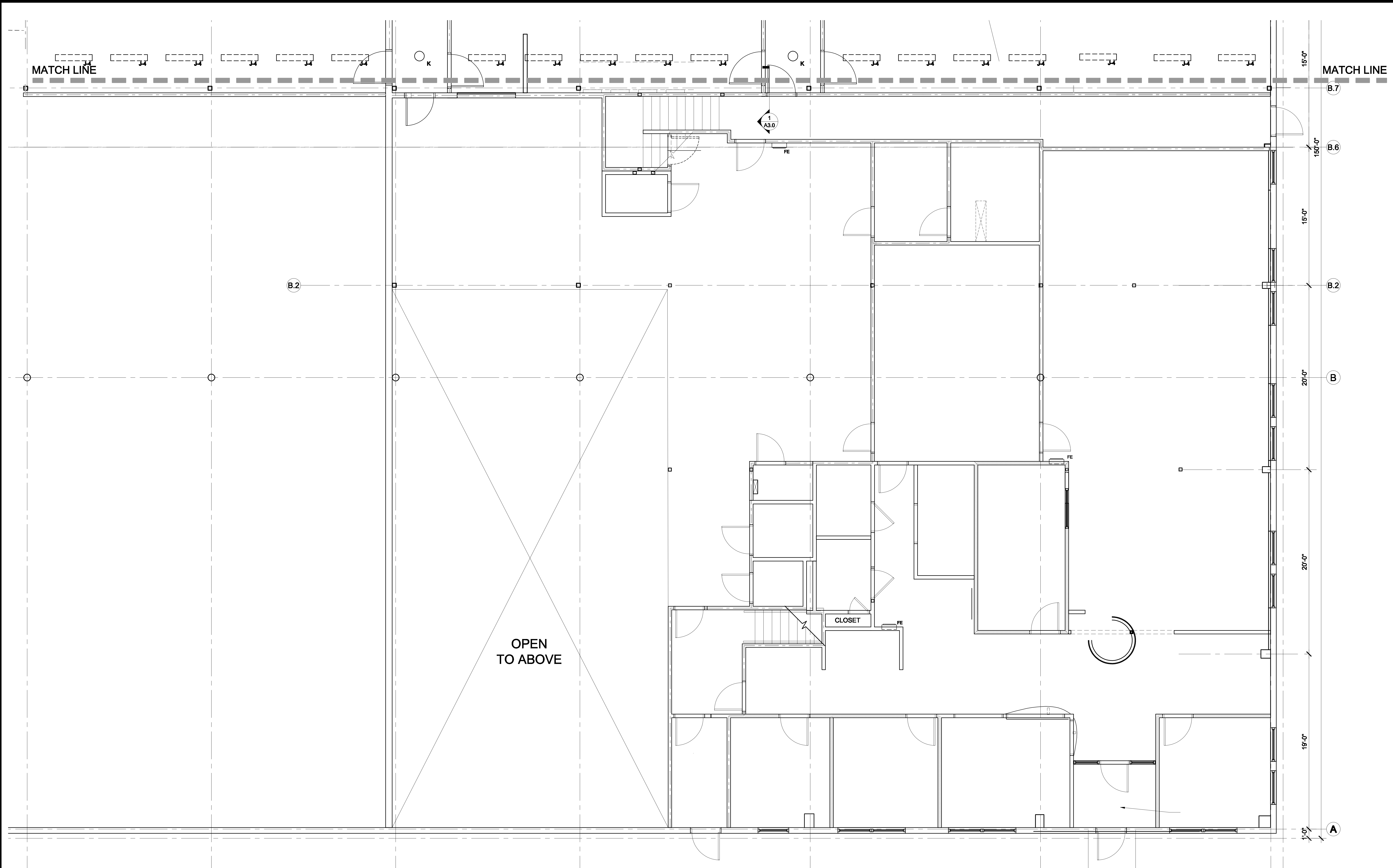
DRAWN BY: DAM/JUS

CHECKED BY: TST

SCALE: AS NOTED

SHEET TITLE:  
**FIRST FLOOR REFLECTED CEILING PLAN PART B**

**A1.3B**



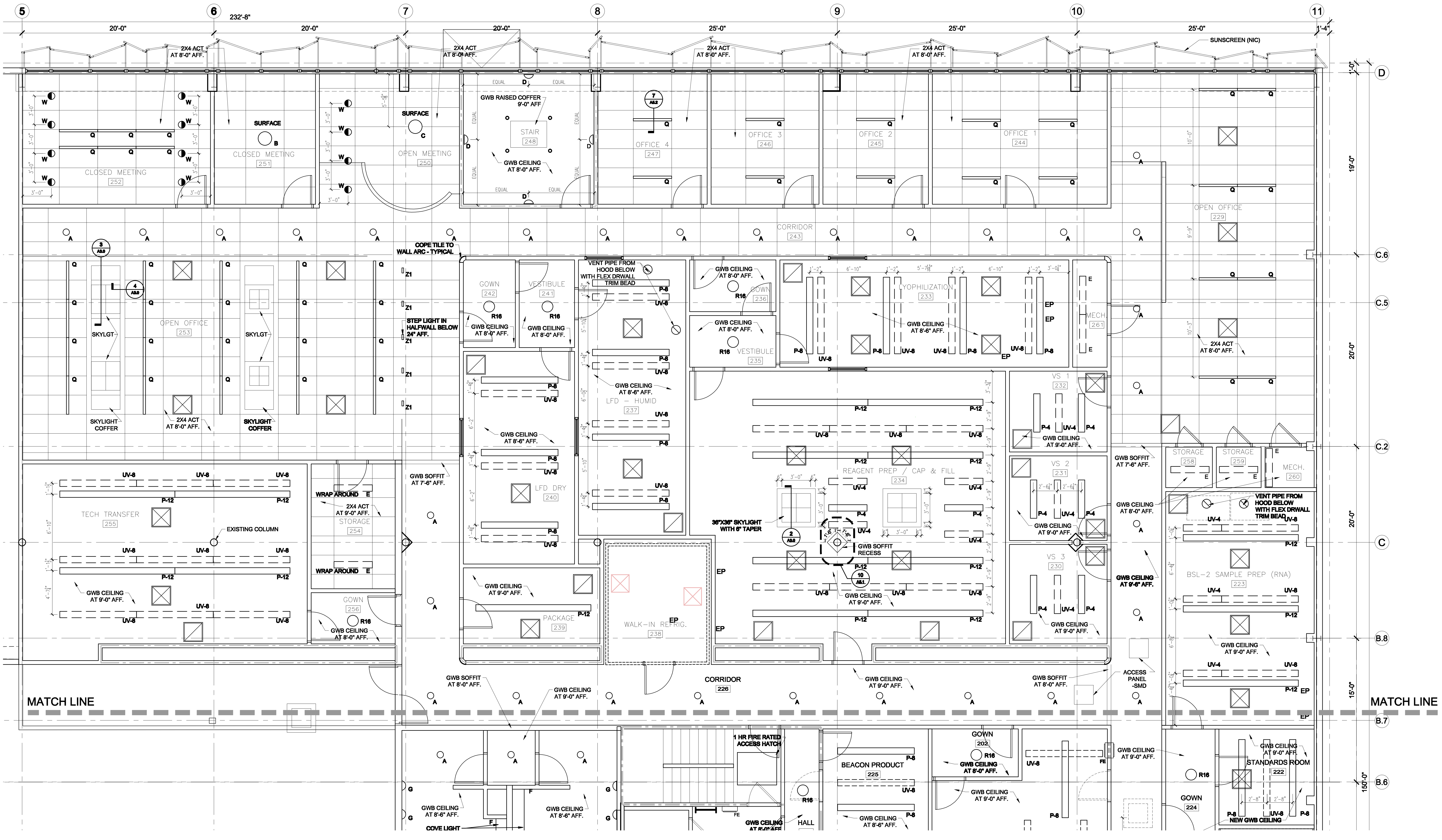
**1** FIRST FLOOR REFLECTED CEILING PLAN - PART B  
 A1.3B  
 1/4" = 1'-0"

REFLECTED CEILING PLAN LEGEND GENERAL	
SYMBOL	DESCRIPTION
	HVAC DIFFUSERS SEE MECHANICAL PLANS FOR SIZE AND TYPE
	CONCEPTUAL SPRINKLER HEAD FINAL DESIGN BY INSTALLER
	2 x 4 ACOUSTICAL CEILING TILE AS INDICATED

REFLECTED CEILING PLAN LEGEND LIGHTING COORDINATE W/ ELECTRICAL PLANS		
SYMBOL	DESCRIPTION	
	PENDANT LINEAR	+
	SURFACE LINEAR	+
	SURFACE	+
	RECESSED	+
	WALL WASHER	+
	WALL SCONCE	+
	PENDANT	+
	ARM MOUNTED WALL WASHER	+
	LINEAR WALL SCONCE	+
	EXIT LIGHTS/DIRECTION	+
	EMERGENCY LIGHTS (SEE ELEC PLANS)	+

**REFLECTED CEILING PLAN NOTES**  
 1.) GENERAL CONTRACTOR TO CONFIRM IN FIELD, ALL EXISTING PRIMARY STEEL 'BENT' ELEVATIONS WITH PROPOSED CEILING ELEVATIONS AND CONTACT ARCHITECT WITH ANY CONFLICTS PRIOR TO CONSTRUCTION



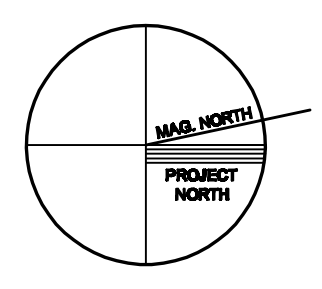


**1 SECOND FLOOR REFLECTED CEILING PLAN - PART A**  
1/4" = 1'-0"

REFLECTED CEILING PLAN LEGEND GENERAL	
SYMBOL	DESCRIPTION
	HVAC DIFFUSERS SEE MECHANICAL PLANS FOR SIZE AND TYPE
	CONCEPTUAL SPRINKLER HEAD FINAL DESIGN BY INSTALLER
	2 x 4 ACOUSTICAL CEILING TILE AS INDICATED

REFLECTED CEILING PLAN LEGEND LIGHTING COORDINATE W/ ELECTRICAL PLANS			
SYMBOL	DESCRIPTION	SYMBOL	DESCRIPTION
	PENDANT LINEAR		PENDANT
	SURFACE LINEAR		ARM MOUNTED WALL WASHER
	SURFACE		LINEAR WALL SCONCE
	RECESSED		EXIT LIGHT/DIRECTION
	WALL WASHER		EMERGENCY LIGHTS (SEE ELEC PLANS)
	WALL SCONCE		

**REFLECTED CEILING PLAN NOTES**  
1.) GENERAL CONTRACTOR TO CONFIRM IN FIELD, ALL EXISTING PRIMARY STEEL 'BENT' ELEVATIONS WITH PROPOSED CEILING ELEVATIONS AND CONTACT ARCHITECT WITH ANY CONFLICTS PRIOR TO CONSTRUCTION





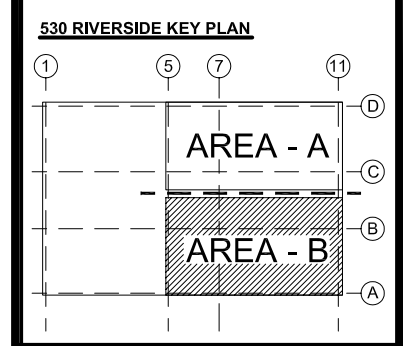


© 2011 TFH ARCHITECTS

**EnviroLogix**  
RIVERSIDE CAMPUS  
530 - DNA EXPANSION  
PORTLAND, MAINE

**TFH ARCHITECTS**  
480 MIDDLE STREET  
PORTLAND MAINE 04101  
TELEPHONE 207 775 6141  
ARCHITECTURE PLANNING

**CONSULTANTS:**  
**STRUCTURAL:**  
Structural Structural Engineers, Inc.  
175 Park Street  
Portland, ME 04101-4400  
207-679-1838  
**MECHANICAL:**  
Integrated Energy Systems, LLC  
310 Main Street  
Portland, ME 04105  
207-281-4263  
**ELECTRICAL:**  
BENNETT ENGINEERING  
1 Bennett Road  
Portland, ME 04032  
207-685-9475

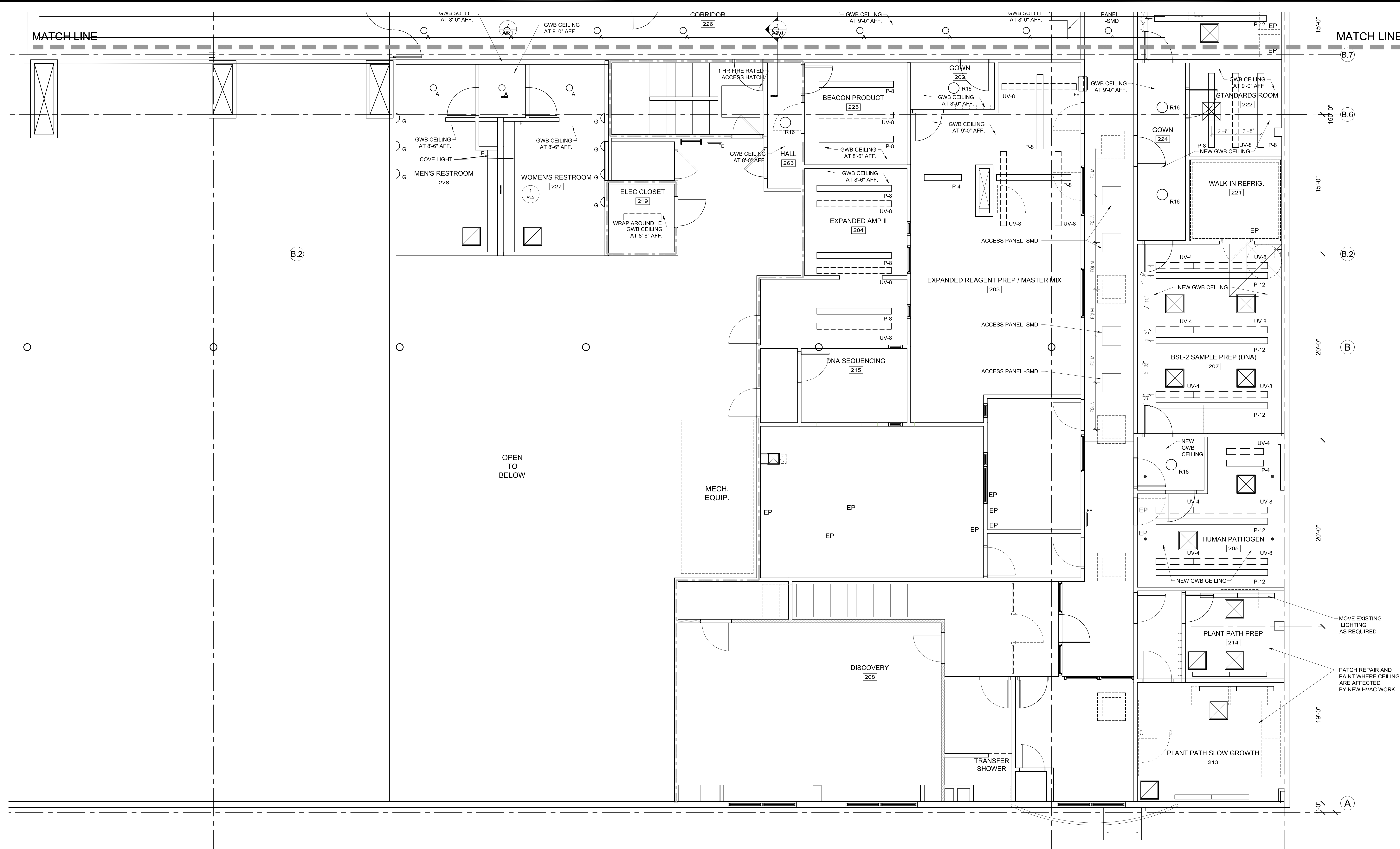


REVISIONS:

DATE: 8/17/11  
PROJECT No. 1026A  
DRAWN BY: DAM,RJS  
CHECKED BY: TST  
SCALE: AS NOTED

SHEET TITLE:  
SECOND FLOOR  
REFLECTED  
CEILING PLAN  
PART B

**A1.4B**

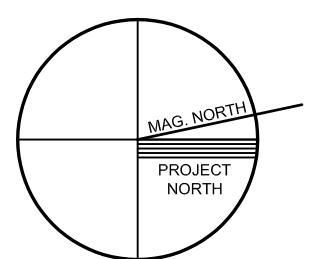


**1**  
A1.4B  
SECOND FLOOR REFLECTED CEILING PLAN - PART B  
1/4" = 1'-0"

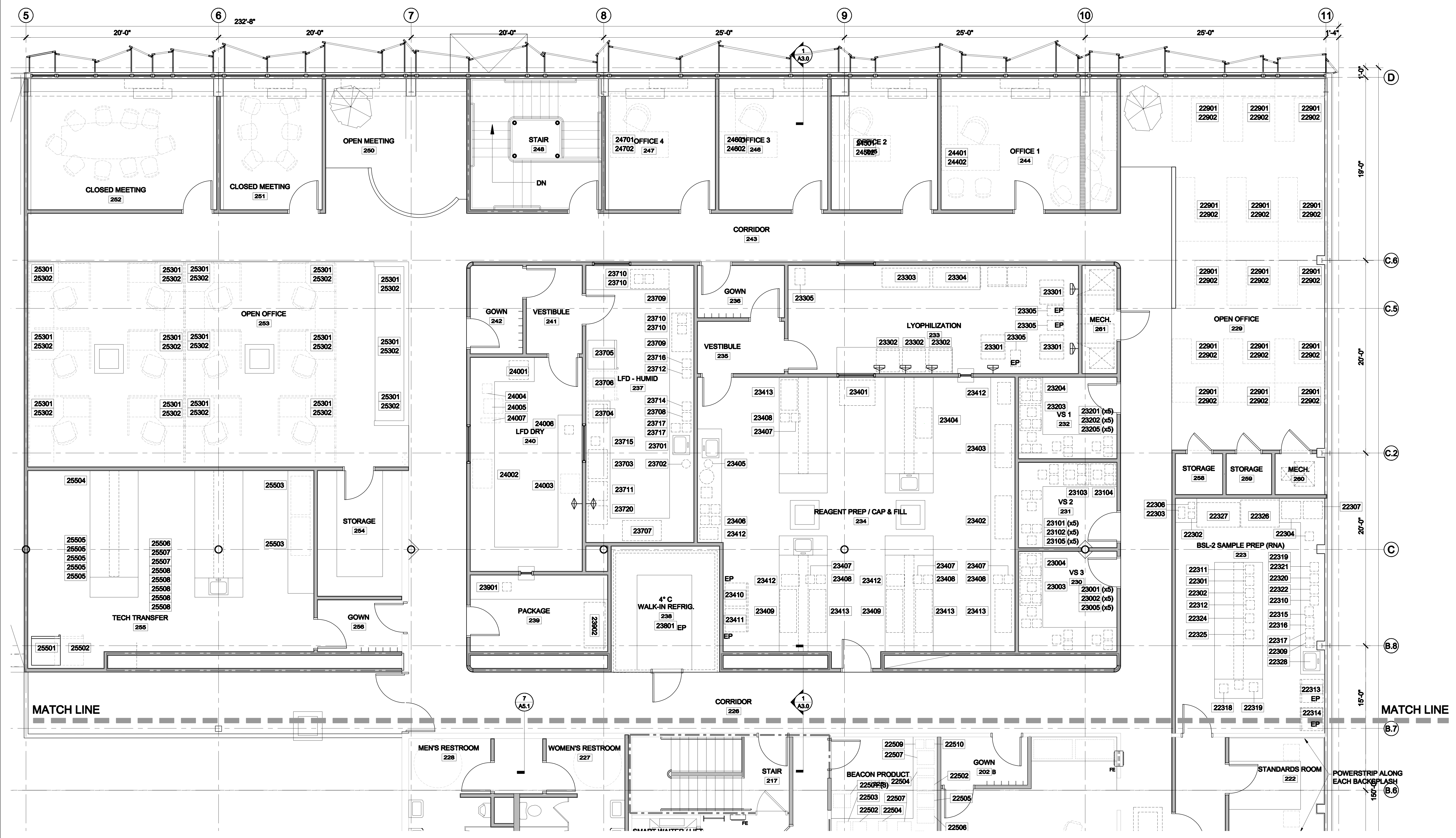
REFLECTED CEILING PLAN LEGEND GENERAL	
SYMBOL	DESCRIPTION
	HVAC DIFFUSERS SEE MECHANICAL PLANS FOR SIZE AND TYPE
	CONCEPTUAL SPRINKLER HEAD FINAL DESIGN BY INSTALLER
	2 x 4 ACOUSTICAL CEILING TILE AS INDICATED

REFLECTED CEILING PLAN LEGEND LIGHTING COORDINATE W/ ELECTRICAL PLANS		
SYMBOL	DESCRIPTION	
	PENDANT LINEAR	
	SURFACE LINEAR	
	SURFACE	
	RECESSED	
	WALL WASHER	
	WALL SCONCE	

**REFLECTED CEILING PLAN NOTES**  
1.) GENERAL CONTRACTOR TO CONFIRM IN FIELD, ALL EXISTING PRIMARY STEEL 'BENT' ELEVATIONS WITH PROPOSED CEILING ELEVATIONS AND CONTACT ARCHITECT WITH ANY CONFLICTS PRIOR TO CONSTRUCTION





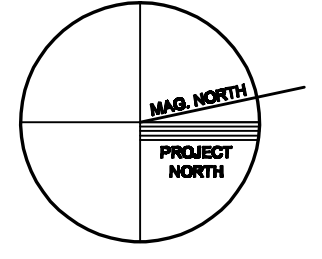


**1 SECOND FLOOR PLAN - PART A - FURNITURE FIXTURES AND EQUIPMENT**  
 1/4" = 1'-0"

**EQUIPMENT PLAN LEGEND**

- NITROGEN / ARGON GAS CONNECTION
- COMPRESSED AIR CONNECTION
- EMERGENCY POWER

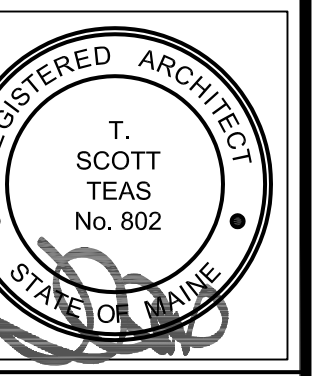
- EQUIPMENT PLAN NOTES**
- 1.) SEE ELECTRICAL DRAWINGS FOR EMERGENCY POWER REQUIREMENTS
  - 2.) ONLY NEW OR RELOCATED EQUIPMENT IS LABELED. EXISTING EQUIPMENT IS NOT SHOWN FOR CLARITY.





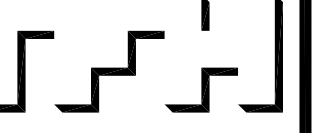
MATCH LINE

MATCH LINE



© 2011 TFH ARCHITECTS

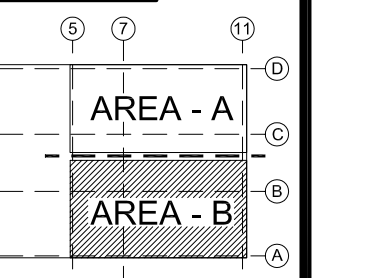
**EnviroLogix**  
RIVERSIDE CAMPUS  
530 - DNA EXPANSION  
PORTLAND, MAINE



TFH ARCHITECTS  
80 MIDDLE STREET  
PORTLAND MAINE 04101  
TELEPHONE 207 775 6141  
ARCHITECTURE PLANNING

**CONSULTANTS:**  
**STRUCTURAL:**  
Baker Structural Engineers, Inc.  
70 York Street  
Portland, ME 04101-4450  
207-633-1530  
**MECHANICAL:**  
Integrated Energy Systems, PLLC  
110 Middle Road  
Portland, ME 04105  
207-791-4203  
**ELECTRICAL:**  
SAFETY ENGINEERING  
10 Forest Road  
Portland, ME 04103  
207-655-9475

AN OVERLOOK KEY PLAN



REVISIONS:

DATE: 8/17/11  
PROJECT No. 1026A  
DRAWN BY: DAM,RJS  
CHECKED BY: TST  
SCALE: AS NOTED

SHEET TITLE:  
SECOND FLOOR  
PLAN - PART B  
FURNITURE  
FIXTURES AND  
EQUIPMENT

A1.6B

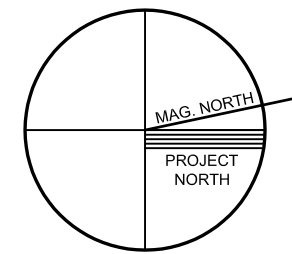
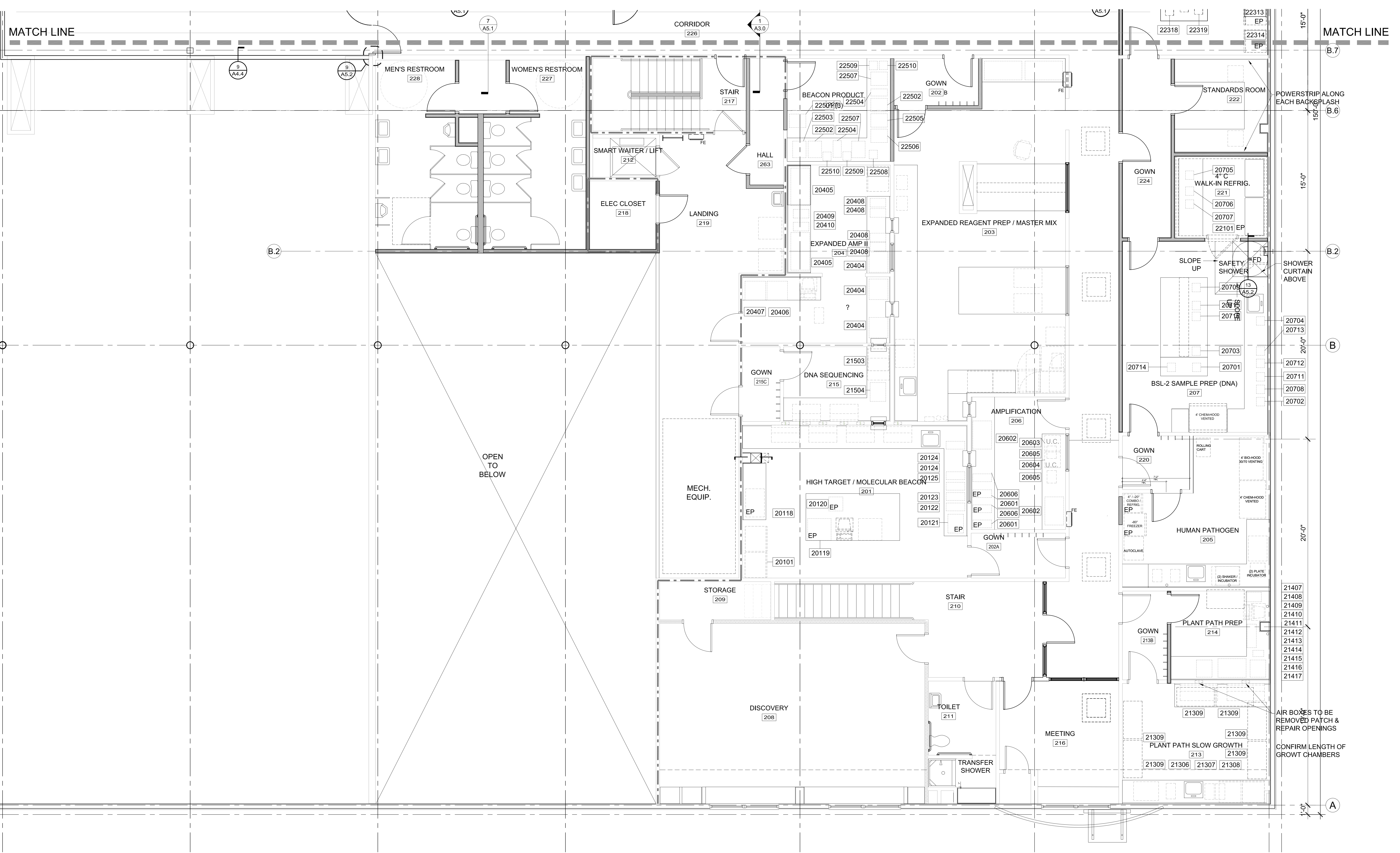
1 SECOND FLOOR PLAN - PART B - FURNITURE FIXTURES AND EQUIPMENT  
A1.6B 1/4" = 1'-0"

**EQUIPMENT PLAN LEGEND**

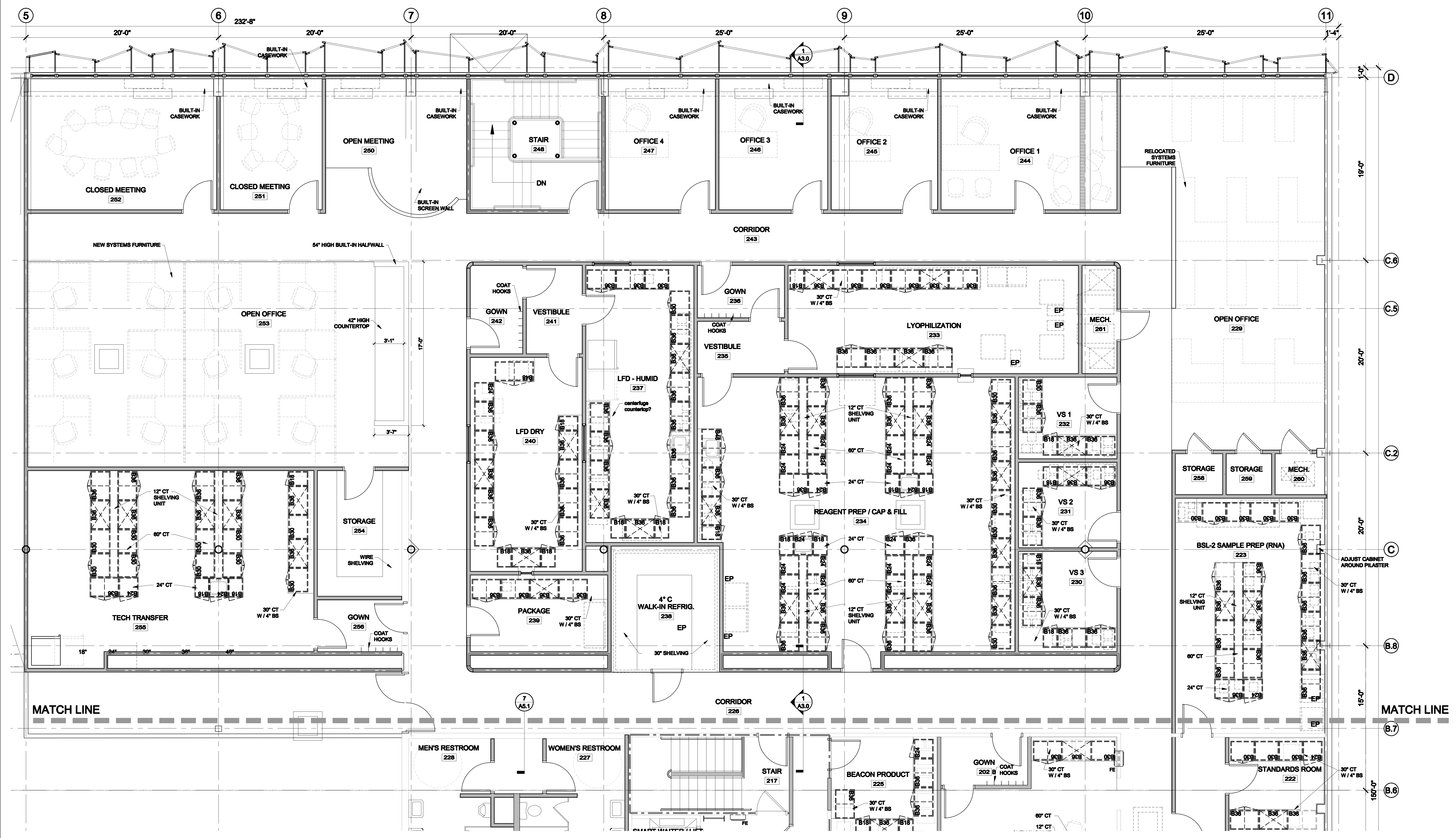
- NITROGEN / ARGON GAS CONNECTION
- COMPRESSED AIR CONNECTION
- EP EMERGENCY POWER

**EQUIPMENT PLAN NOTES**

- 1.) SEE ELECTRICAL DRAWINGS FOR EMERGENCY POWER REQUIREMENTS
- 2.) ONLY NEW OR RELOCATED EQUIPMENT IS LABELED. EXISTING EQUIPMENT IS NOT SHOWN FOR CLARITY



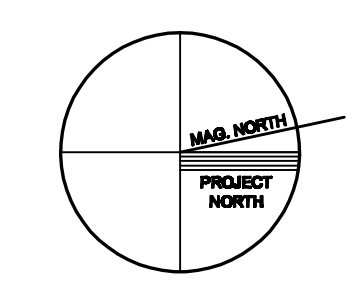




**1 SECOND FLOOR PLAN - PART A - CASEWORK**  
1/4" = 1'-0"

BASE CABINETS - WITH (2) 4" AND (2) 8" DRAWERS		ABBREVIATIONS	
18"	24"	CT = COUNTERTOP	
30"	36"	BS = BACKSPASH	
48"			
BASE CABINETS - DOOR AND SHELF OR SINK BASE			
18"	24"		
30"	36"		
48"			
BASE CABINETS - OPEN WITH UNDERSHELF			
18"	24"		
30"	36"		
48"			
WALL CABINETS - SOLID DOORS			
18"	24"		
30"	36"		
48"			

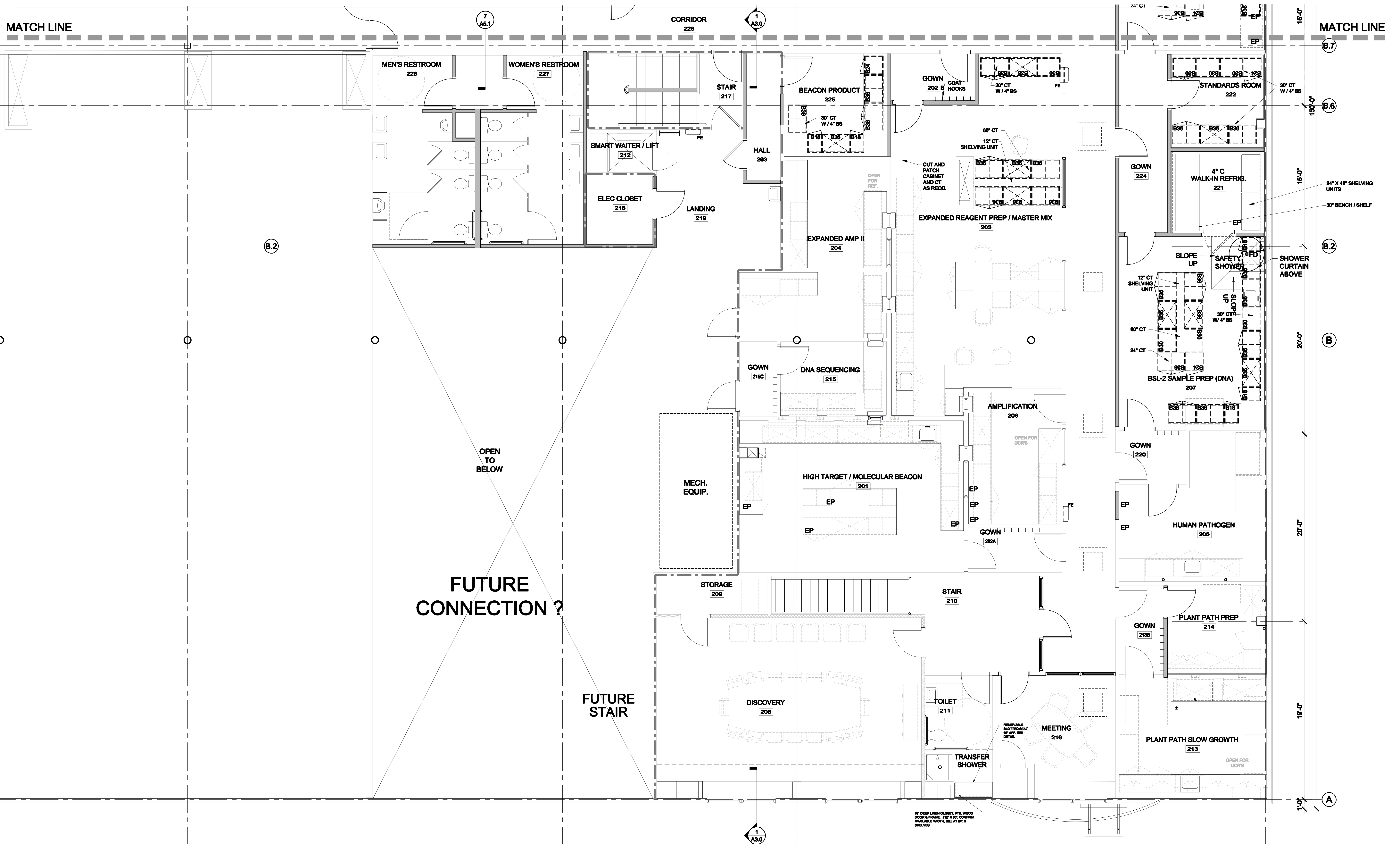
**2 CASEWORK LEGEND AND ABBREVIATIONS**  
1/4" = 1'-0"





MATCH LINE

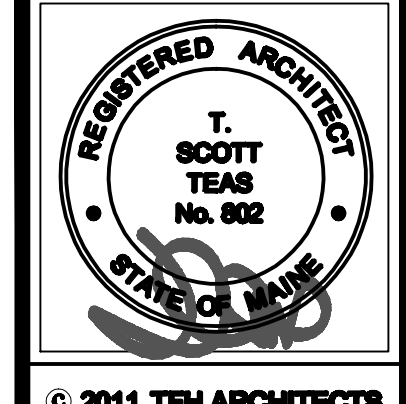
MATCH LINE



**1** SECOND FLOOR PLAN - PART B - CASEWORK  
 A1.7B 1/4" = 1'-0"

<p><b>BASE CABINETS - WITH (2) 4" AND (2) 8" DRAWERS</b></p> <p>18" 24" 30" 36" 48"        B18 B24 B30 B36 B48</p> <p><b>BASE CABINETS - DOOR AND SHELF OR SINK BASE</b></p> <p>18" 24" 30" 36" 48"        B18 B24 B30 B36 B48</p> <p><b>BASE CABINETS - OPEN WITH UNDERSHELF</b></p> <p>18" 24" 30" 36" 48"        B18 B24 B30 B36 B48</p> <p><b>WALL CABINETS - SOLID DOORS</b></p> <p>18" 24" 30" 36" 48"        W18 W24 W30 W36 W48</p>	<p><b>ABBREVIATIONS</b></p> <p>CT = COUNTERTOP</p> <p>BS = BACKSPASH</p>
---	--

**2** CASEWORK LEGEND  
 A1.7B 1/4" = 1'-0"



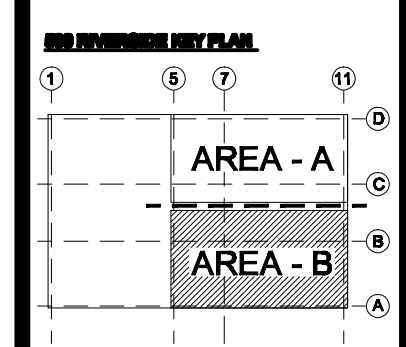
© 2011 TRH ARCHITECTS

**EnviroLogix**  
 RIVERSIDE CAMPUS  
 530 - DNA EXPANSION  
 PORTLAND, MAINE

TRH ARCHITECTS  
 60 MIDDLE STREET  
 PORTLAND MAINE 04101  
 TELEPHONE 207 776 6141  
 ARCHITECTURE PLANNING

**CONSULTANTS:**

MECHANICAL: T. Scott Teas, Registered Architect, No. 802, State of Maine  
 ELECTRICAL: T. Scott Teas, Registered Architect, No. 802, State of Maine  
 PLUMBING: T. Scott Teas, Registered Architect, No. 802, State of Maine  
 STRUCTURAL: T. Scott Teas, Registered Architect, No. 802, State of Maine  
 INTERIORS: T. Scott Teas, Registered Architect, No. 802, State of Maine  
 ENVIRONMENTAL: T. Scott Teas, Registered Architect, No. 802, State of Maine  
 SAFETY: T. Scott Teas, Registered Architect, No. 802, State of Maine  
 GENERAL CONTRACTOR: T. Scott Teas, Registered Architect, No. 802, State of Maine



REVISIONS:

DATE: 8/17/11  
 PROJECT No. 1028A  
 DRAWN BY: DAM,RJS  
 CHECKED BY: TST  
 SCALE: AS NOTED

SHEET TITLE:  
 SECOND FLOOR  
 PLAN - PART B  
 CASEWORK

**A1.7B**

