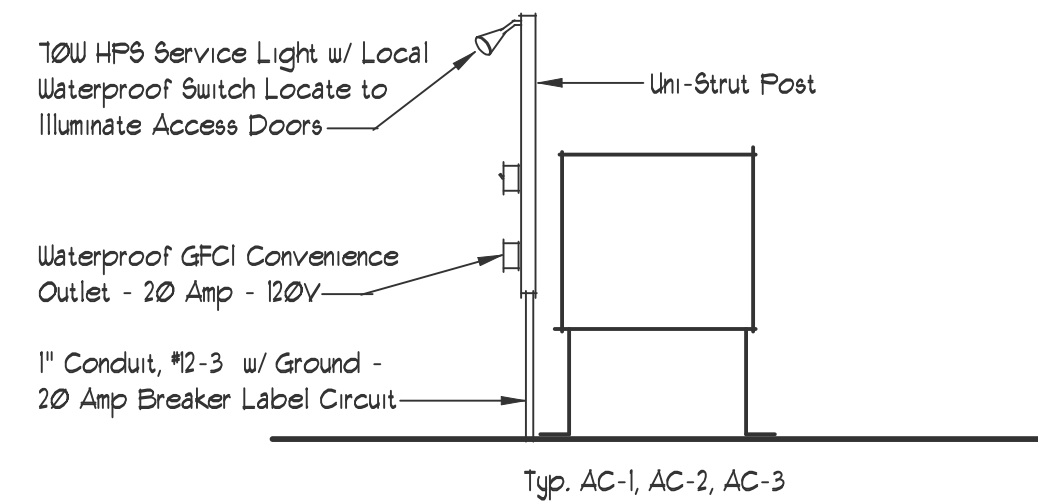


### Air Conditioner Units

	Voltage	HP	MCA	N	C	CB
AC-1	3P-460	26.7	3.6 Gal.	#10	3/4"	2.5
AC-2	3P-460	25.7	3.6 Gal.	#10	3/4"	2.5
AC-3	3P-460	3.5 / 3.5	412	#10	3/4"	2.5

### Notes

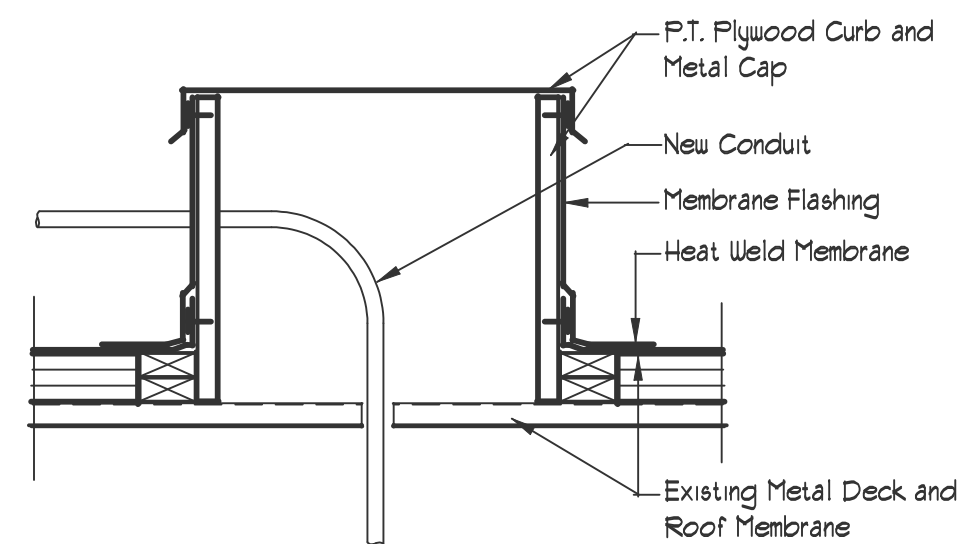
- Control Wiring to be in 1/2" Rigid Conduit.
- Units Specified to be Supplied with Electrical Disconnect.
- Electric Baseboard Heat in Contract Area below each Window to be removed. Seal Conduit Penetration. Provide continuous Vinyl Cove Base to conceal removals on Exterior Wall. Match existing Color.



Service Light and Outlet Detail  
No Scale

### General Conditions

- Schedule Phase Work to minimize disruption to Building Occupants.
  - Weekend and Early AM work to be coordinated with Verizon.
- Provide Temporary Plastic Sheeting at Work Areas to protect Office Modules and Equipment.
- Limit Ceiling Tile and Track removals to the minimum required for installation of Ductwork.
- Clearly Label all New Electrical Circuits at the Existing Panels.
- Clean Work Area on a Daily basis.
- Removals of existing Ductwork to be as closely coordinated with the Installation of New Work as reasonably possible. Protect Ends of Existing Supply and Return at the end of each work cycle.
- Permanently Cap existing Supply and Return Ducts at the Limit of Contract.
- Balance New HVAC Registers and Grilles.



Conduit Curb Detail  
No Scale

### Legend

#### Demolition

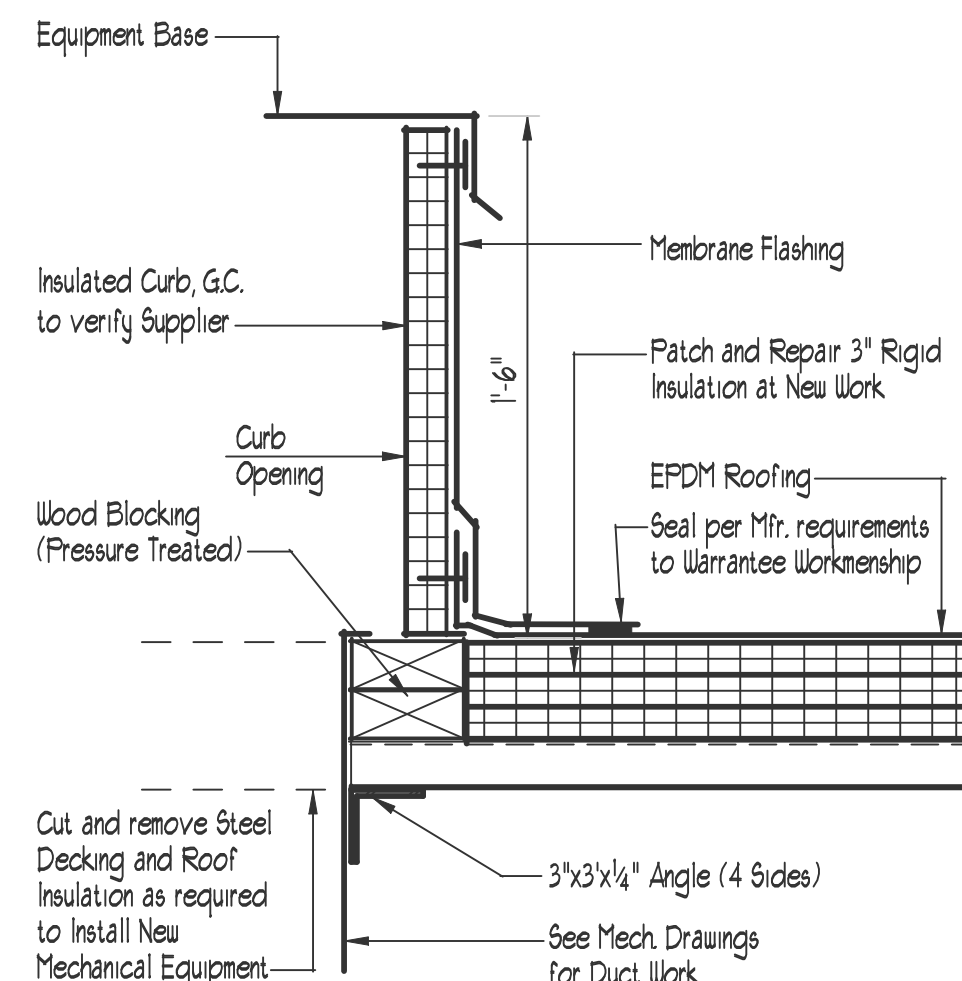
- Mechanical and Electrical Fixtures to be Removed and Properly Disposed
- Work Limits for Temporary Removal of Suspended Acoustical Tile Ceiling to Install New Mechanical System

#### Symbols

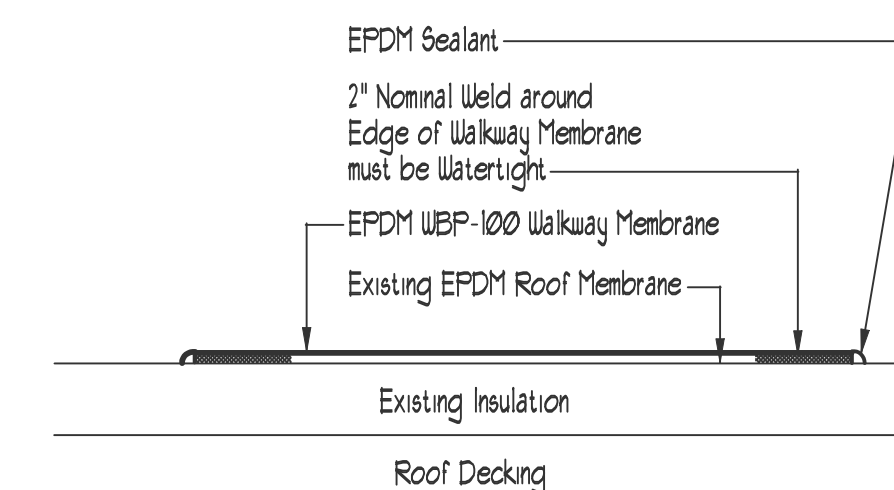
- Light Fixtures
- Suspended Acoustical Tile Ceiling Grid
- New Mechanical Equipment

### Ceiling Notes

- Ceiling Tiles and Support Members shall be temporarily removed and safely stored as required with minimal disruption to Office Work areas. Ceiling Tiles and Supports to be replaced after work is completed.
- Remove and properly dispose of all Mechanical Equipment. (Diffusers, Grilles, Ductwork, etc.)
- The General Contractor shall carry an allowance of \$3,000 for the replacement of Broken or Damaged Ceiling Supports or Tiles due to handling.
- All New Acoustical Ceiling Tiles shall match the Existing.
- The General Contractor shall verify all existing conditions and Dimensions prior to beginning work and notify the Architect of any Discrepancies.

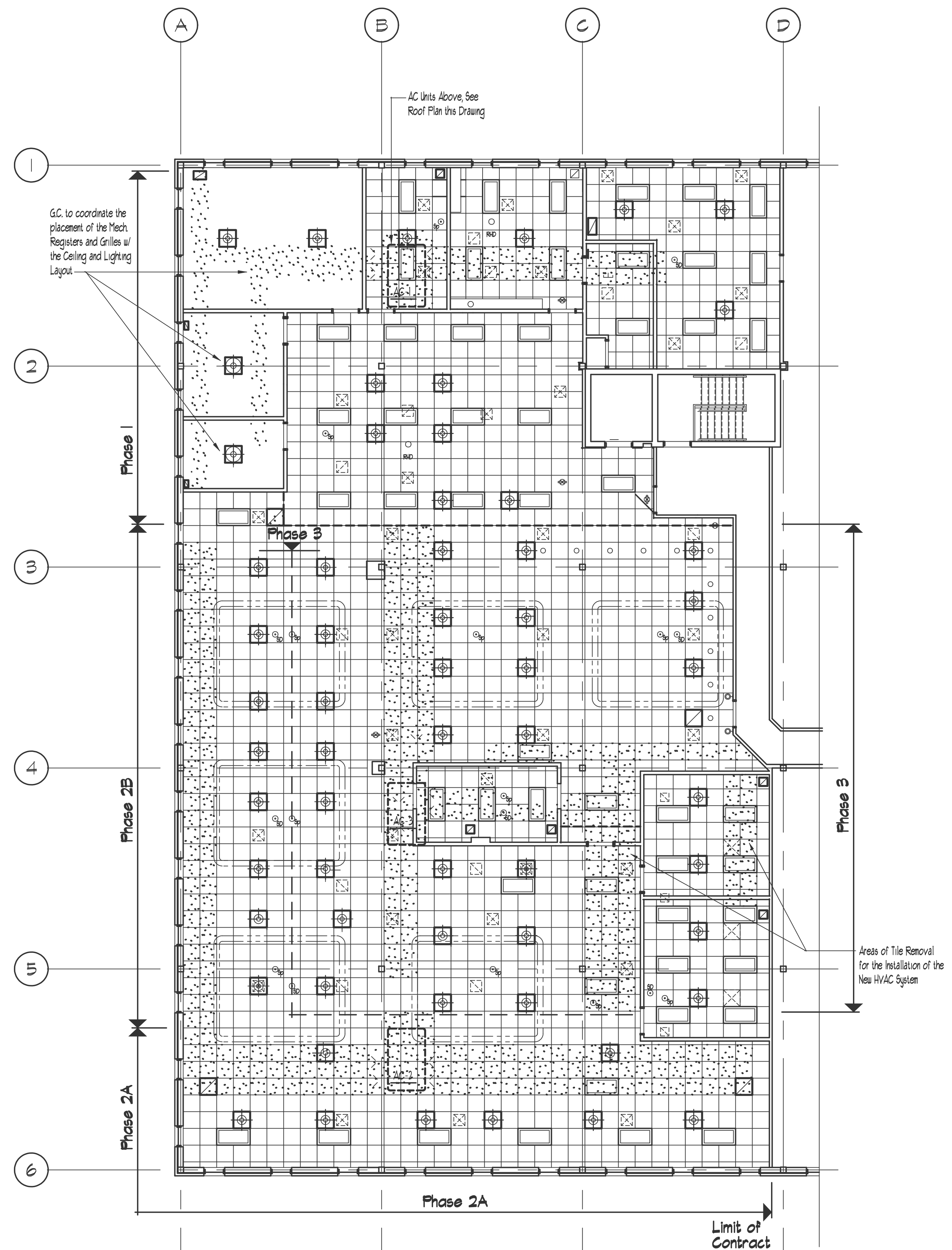


Equipment Curb Detail  
No Scale

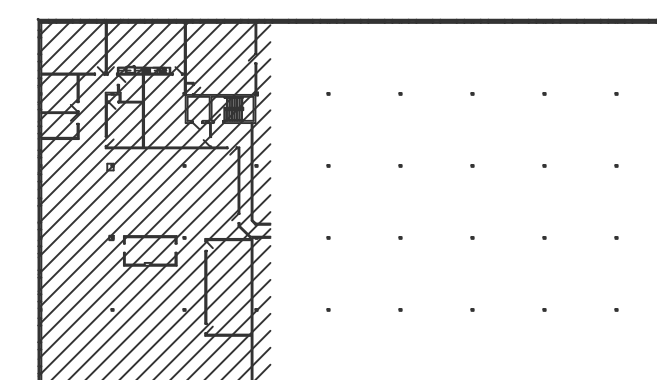


- Details to be used in conjunction with Standard Guide Specifications Containing Requirements for Nailers, Insulation, Slipsheets, etc.
- EPDM Sealant is required on all Cut or Non-Encapsulated Edges of Reinforced Membrane. This includes Factory Cut Membrane
- THE WBP Walkway must not be installed over Field Seams and Fastener Rows and must be Gapped from these Areas a Minimum of 6"

EPDM Walkway Detail  
No Scale



Reflected Ceiling Plan - Renovated  
Scale 1/8" = 1'-0"



Key Plan



**NG**  
Neill and Gunter  
Scarborough, Maine, U.S.A.

**ROBSONWOESE INC**  
CONSULTING ENGINEERS  
Albany Boston Buffalo Raleigh-Durham Syracuse

Architects  
555 Western Ave.  
04330  
Augusta, Maine  
Tel: (207) 625-4700  
E-Mail Address: bsarch@bunkersavage.com

**BSA**

Verizon - Construction Services  
125 High Street  
Boston, Ma.

Verizon - Construction Services  
1 DAVIS FARM  
2nd Floor Renovation  
Portland, Maine  
REFLECTED CEILING AND ROOF PLANS  
AND DETAILS

REVISIONS

Rev. No.	Date	Drawn By	Checked By

Drawing No. **A1**