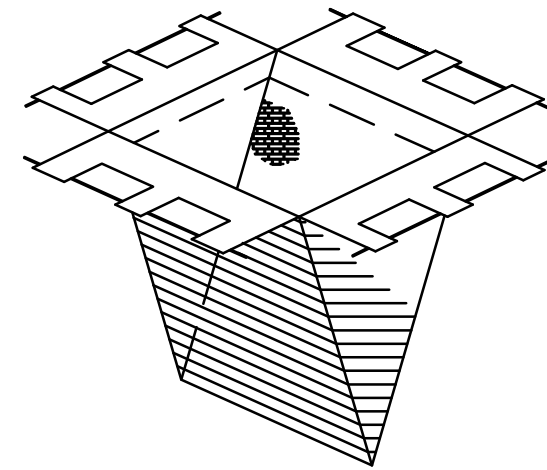


EXISTING BASIN NEW INSTALLATION

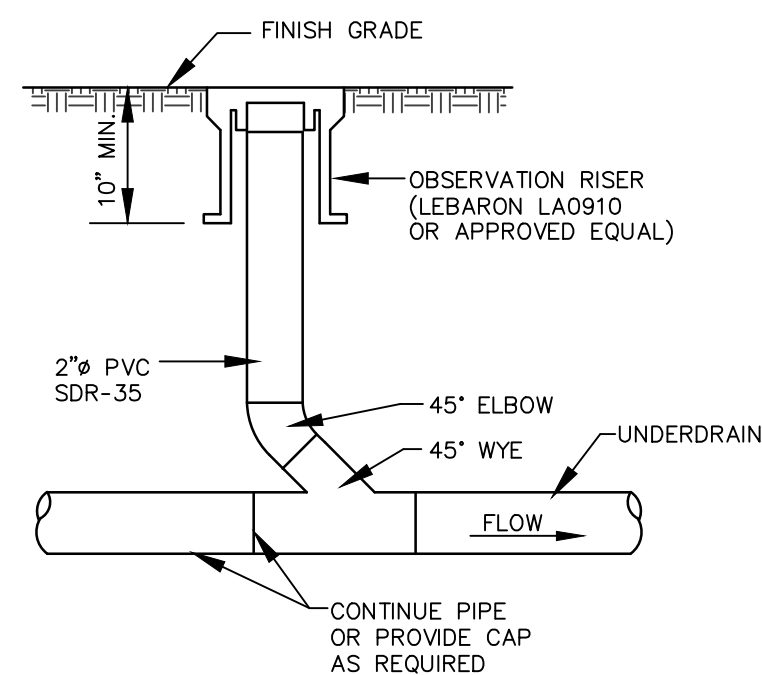


SILT SACK PROTECTION

**NOTES:**  
PRIOR TO FINAL GRADING AND PAVING OPERATIONS BEGIN A CATCH BASIN INSERT (SUCH AS A SILT SACK OR A DANDY BAG (I)) MUST BE INSTALLED IN EACH BASIN PER MANUFACTURER'S INSTRUCTIONS. HAY BALES SHOULD BE REMOVED ONCE INSERTS ARE INSTALLED.

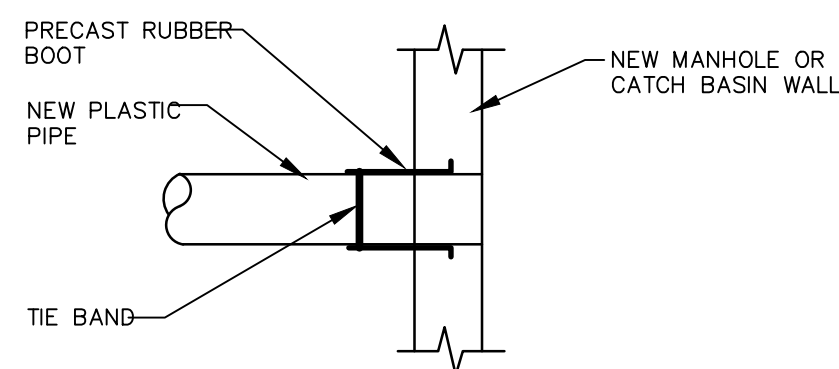
**CATCH BASIN PROTECTION DETAIL (FOR PAVED AREAS)**

NOT TO SCALE



**CLEANOUT IN GRASSED AREAS**

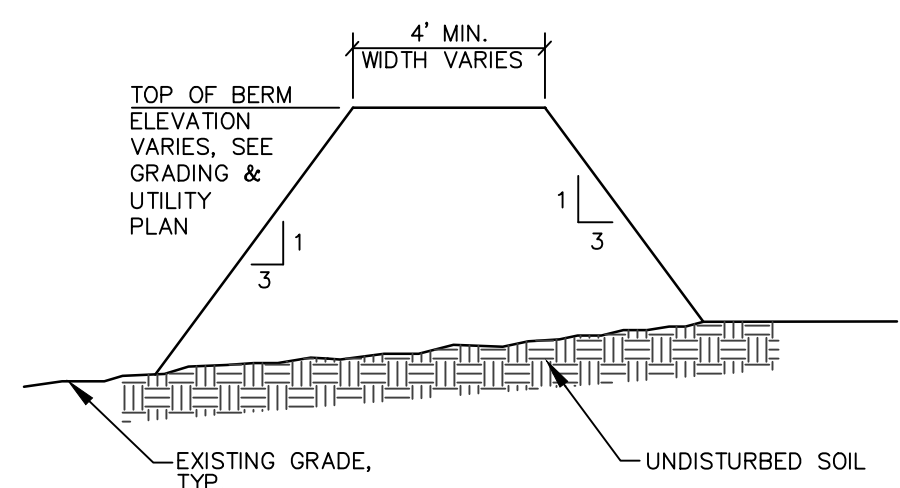
NOT TO SCALE



NEW CONSTRUCTION

**PLASTIC PIPE CONNECTIONS**

NOT TO SCALE

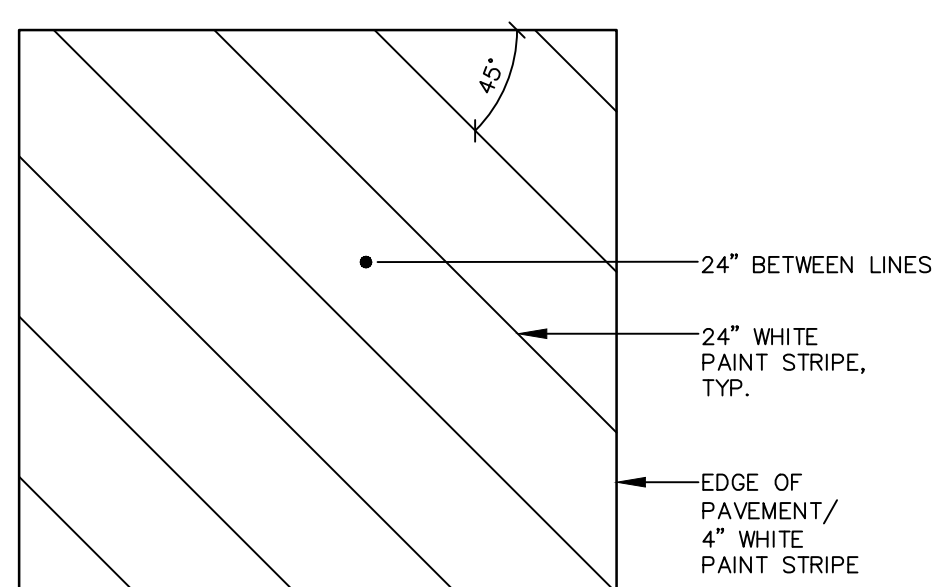


**EMBANKMENT CONSTRUCTION:**

1. CONSTRUCTION MATERIAL SHALL MEET M.D.O.T. SPECIFICATION 703.18.
2. PLACE BORROW MATERIAL IN 12" LIFTS COMPACTED TO 95% OF MAX. DENSITY.
3. INSTALL RIPRAP AND EROSION CONTROL MESH WHERE SPECIFIED ON PLANS.
4. LOAM, SEED, AND STABILIZE IN ACCORDANCE WITH SEDIMENTATION AND EROSION CONTROL PLAN.

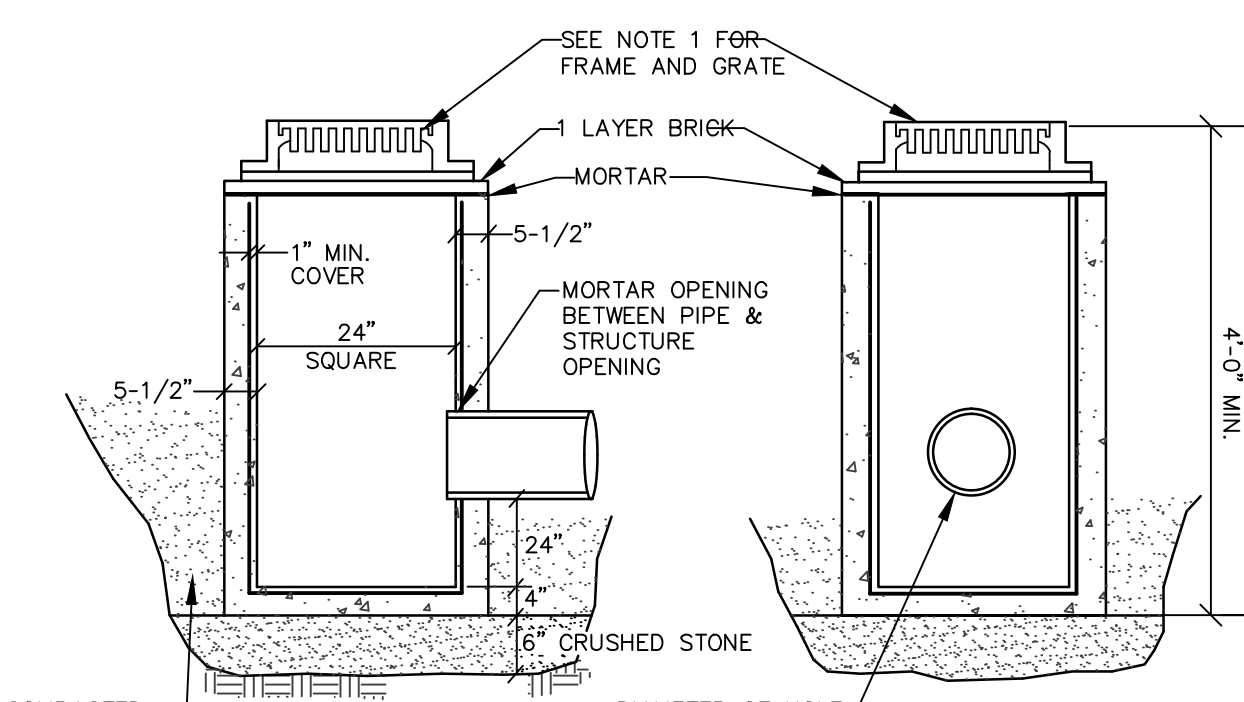
**BERM DETAIL**

NOT TO SCALE



**DIAGONAL PAINT MARKINGS**

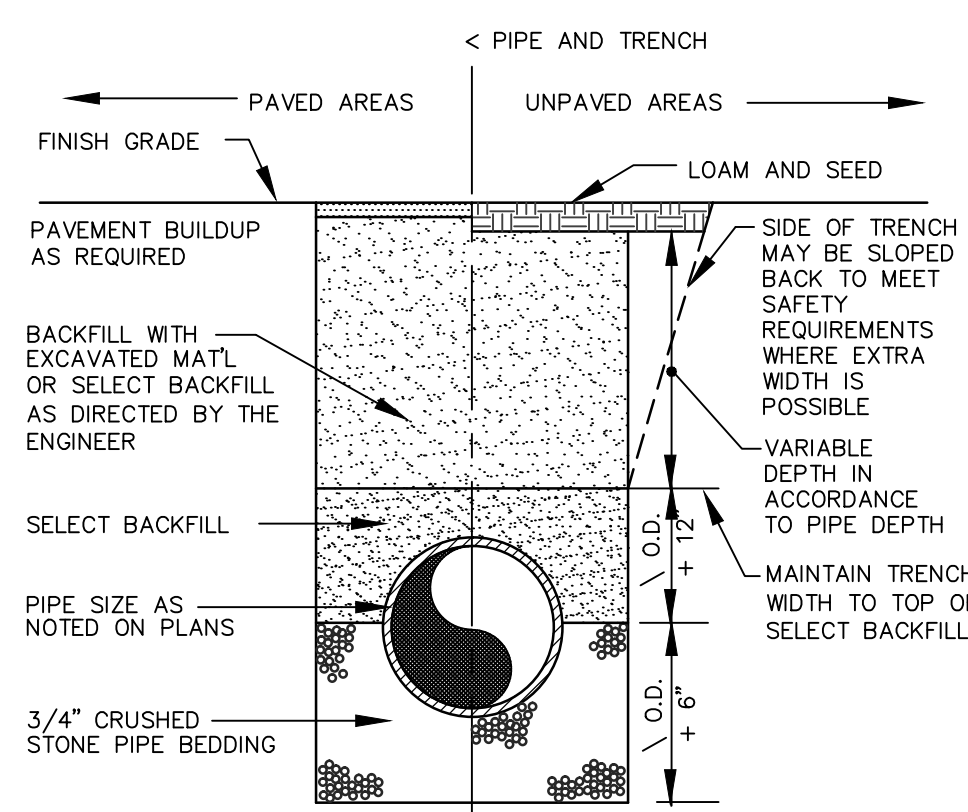
NOT TO SCALE



- NOTES:**
1. FRAME SHALL BE FOR 24" SQUARE GRATE- LEBARON TYPE "F" SQUARE FRAME (LF 245) 4 FLANGE OR ETHERIDGE SQUARE FRAME S24G. GRATE SHALL BE 24"x24" CAST IRON.
  2. ENTIRE CATCH BASIN WITH EXCEPTION OF LEVELING BRICK FRAME AND GRATE TO BE PRECAST AS SINGLE PORTLAND CEMENT CONCRETE UNIT.

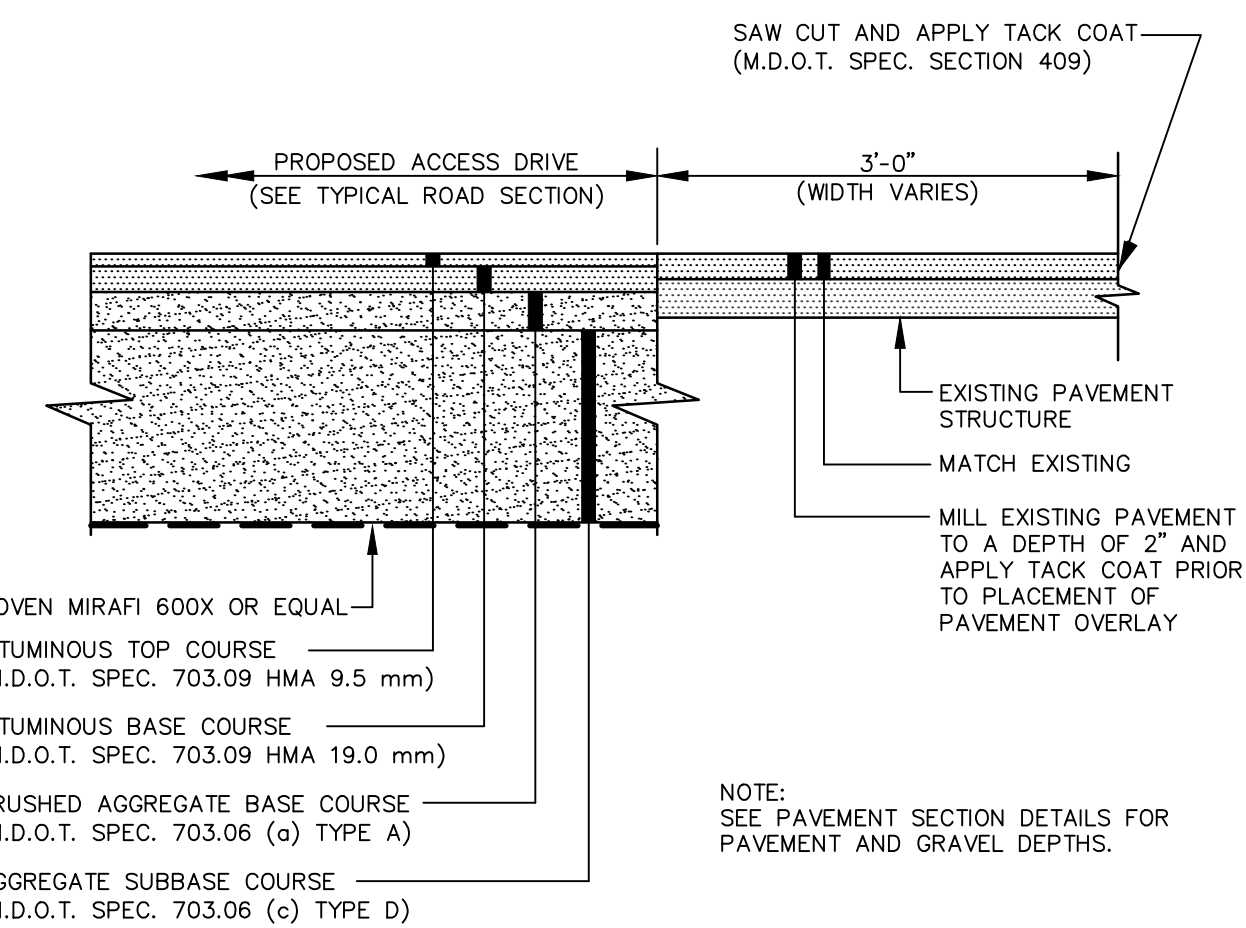
**TYP. TYPE "F" CATCH BASIN**

NOT TO SCALE



**TYPICAL TRENCH SECTION**

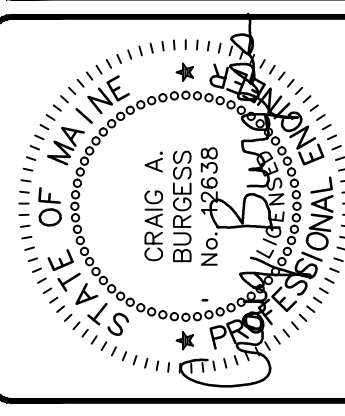
NOT TO SCALE



**TYPICAL PAVEMENT JOINT**

NOT TO SCALE

CRAIG BURGESS, PE. 12638



| DESIGNED   | CHECKED |
|--|---------|
| TDP  | CAB     |
| A KSM 04-18-17 SUBMITTED TO CITY FOR STAFF REVIEW<br>REV. BY: DATE: STATUS:<br>THIS PLAN SHALL NOT BE MODIFIED WITHOUT WRITTEN PERMISSION FROM SEBAGO TECHNICS, INC. ANY ALTERATIONS, AUTHORIZED OR OTHERWISE, SHALL BE AT THE USER'S SOLE RISK AND WITHOUT LIABILITY TO SEBAGO TECHNICS, INC. |         |

**SEBAGO TECHNICS**  
 WWW.SEBAGOTECHNICS.COM  
 75 John Roberts Rd. 250 Casland Rd.  
 South Portland, ME 04106 Suite B  
 Lewiston, ME 04240  
 Tel. 207-200-2100 Tel. 207-783-5656

**DETAILS OF:** PARKING EXPANSION  
 LAVIS FARM ROAD  
 PORTLAND, MAINE  
**FOR:** PIZZAGALLI PROPERTIES, LLC  
 462 SHELBOURNE ROAD, SUITE 101  
 BURLINGTON, VERMONT

| PROJECT NO. | SCALE    |
|-------------|----------|
| 96369       | AS SHOWN |