

PARKING EXPANSION

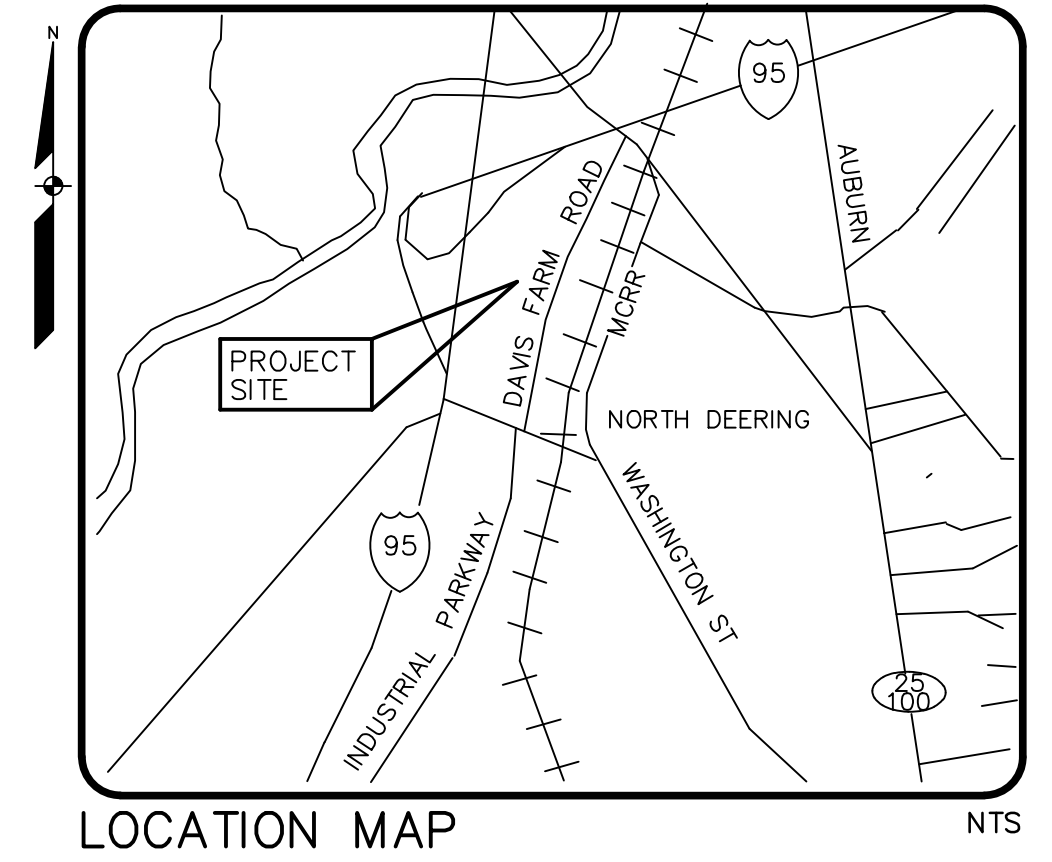
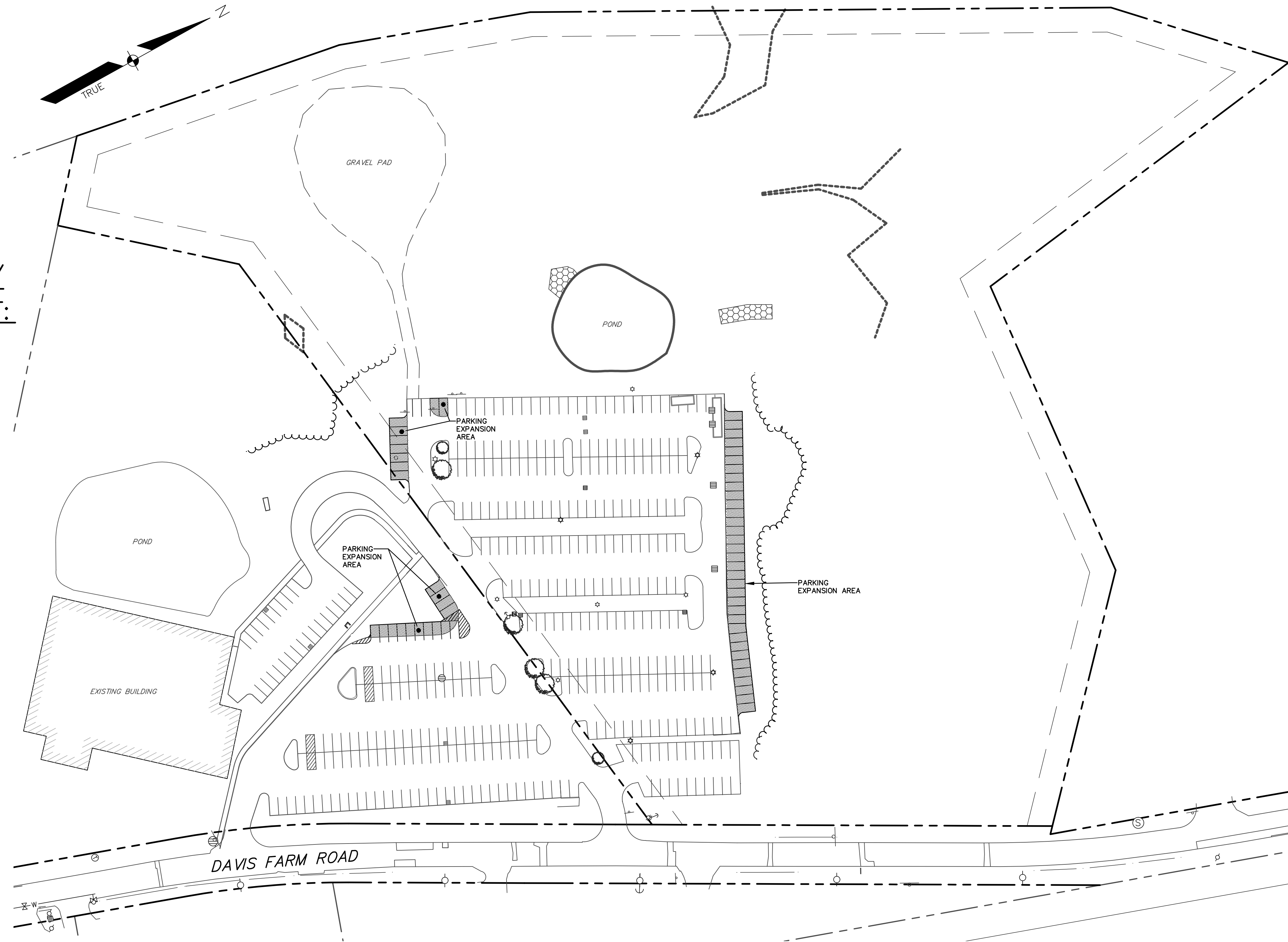
5 DAVIS FARM ROAD
PORTLAND, MAINE

APPLICANT:
PIZZAGALLI
PROPERTIES, LLC
462 SHELBURNE ROAD, SUITE
101
BURLINGTON, VERMONT

**ENGINEER/SURVEYOR/
LANDSCAPE ARCHITECT:**

SEBAGO
TECHNICS

WWW.SEAGOTECHNICS.COM
75 John Roberts Rd. Suite 1A South Portland, ME 04106 Tel. 207-200-2100
250 Goddard Rd. Suite B Lewiston, ME 04240 Tel. 207-783-5656



SHEET LIST	
SHEET NO.	SHEET TITLE
1	COVER SHEET
2	ALTA-ACSM LAND TITLE SURVEY
3	SITE & DEMOLITION PLAN
4	GRADING & UTILITY PLAN
5	DETAILS
6	DETAILS
7	DETAILS
8	PRE DEVELOPMENT STORMWATER PLAN
9	POST DEVELOPMENT STORMWATER PLAN

SCALE: 1"=60'