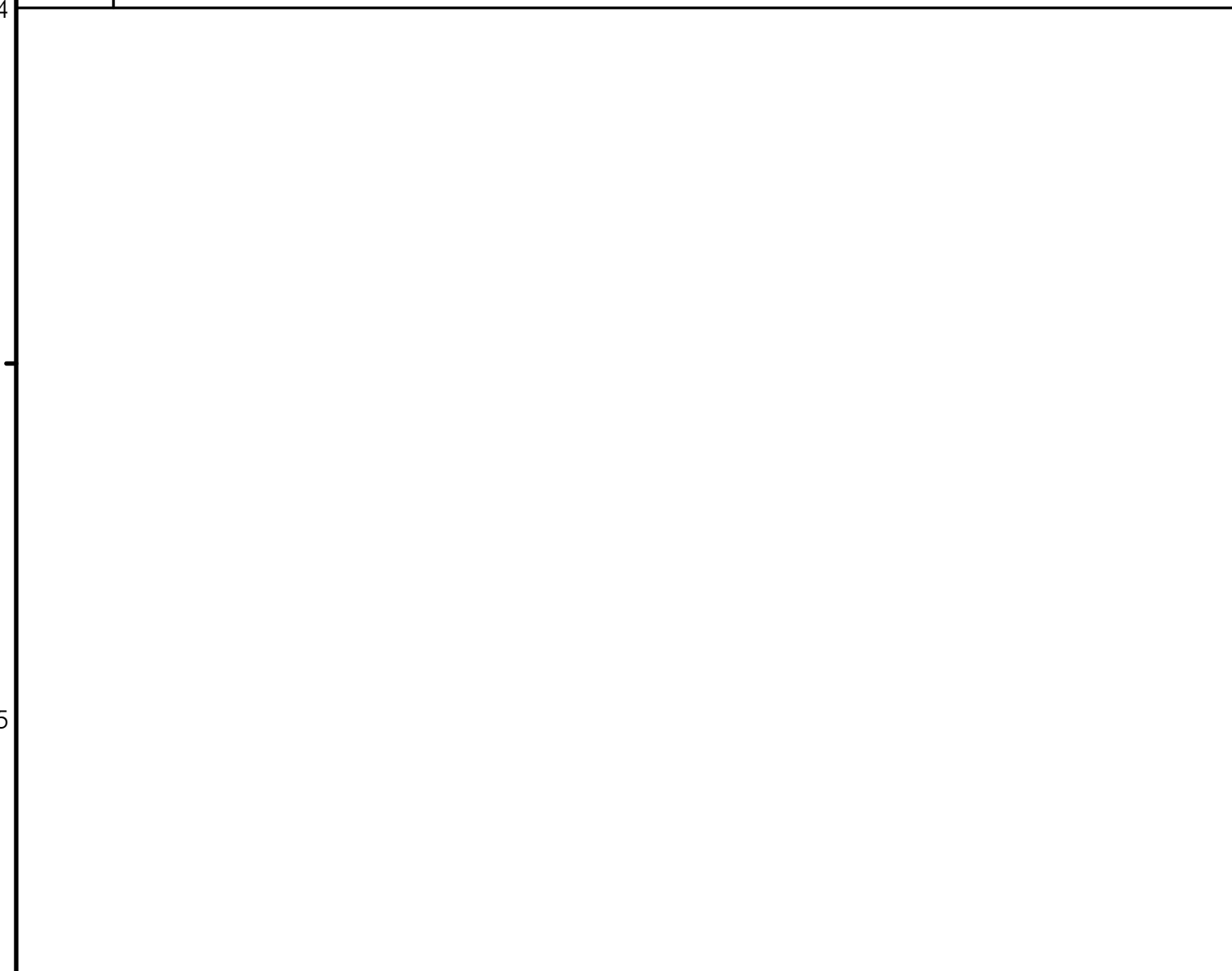




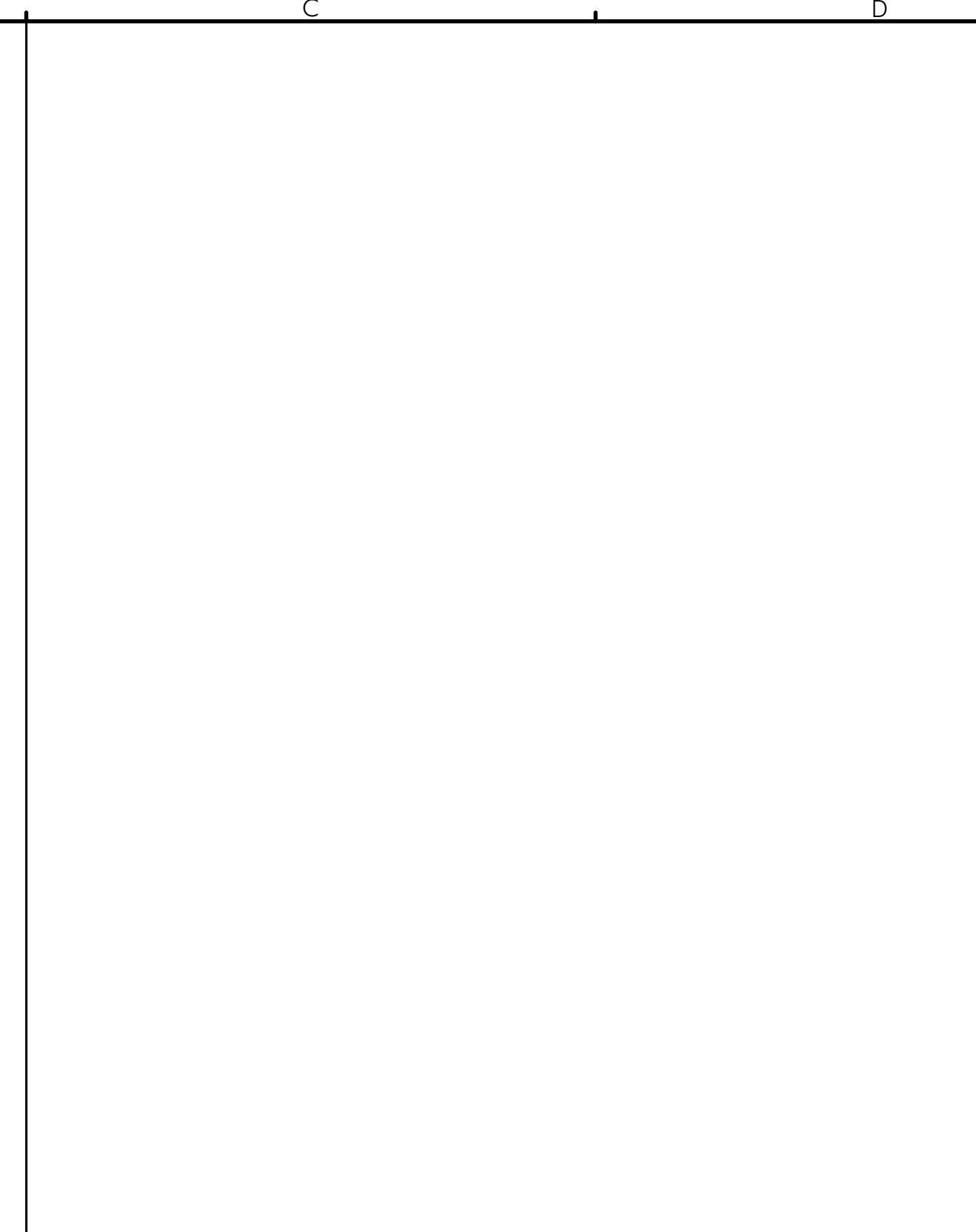
A2 NOT USED
 REFERENCED FROM: SCALE: NTS



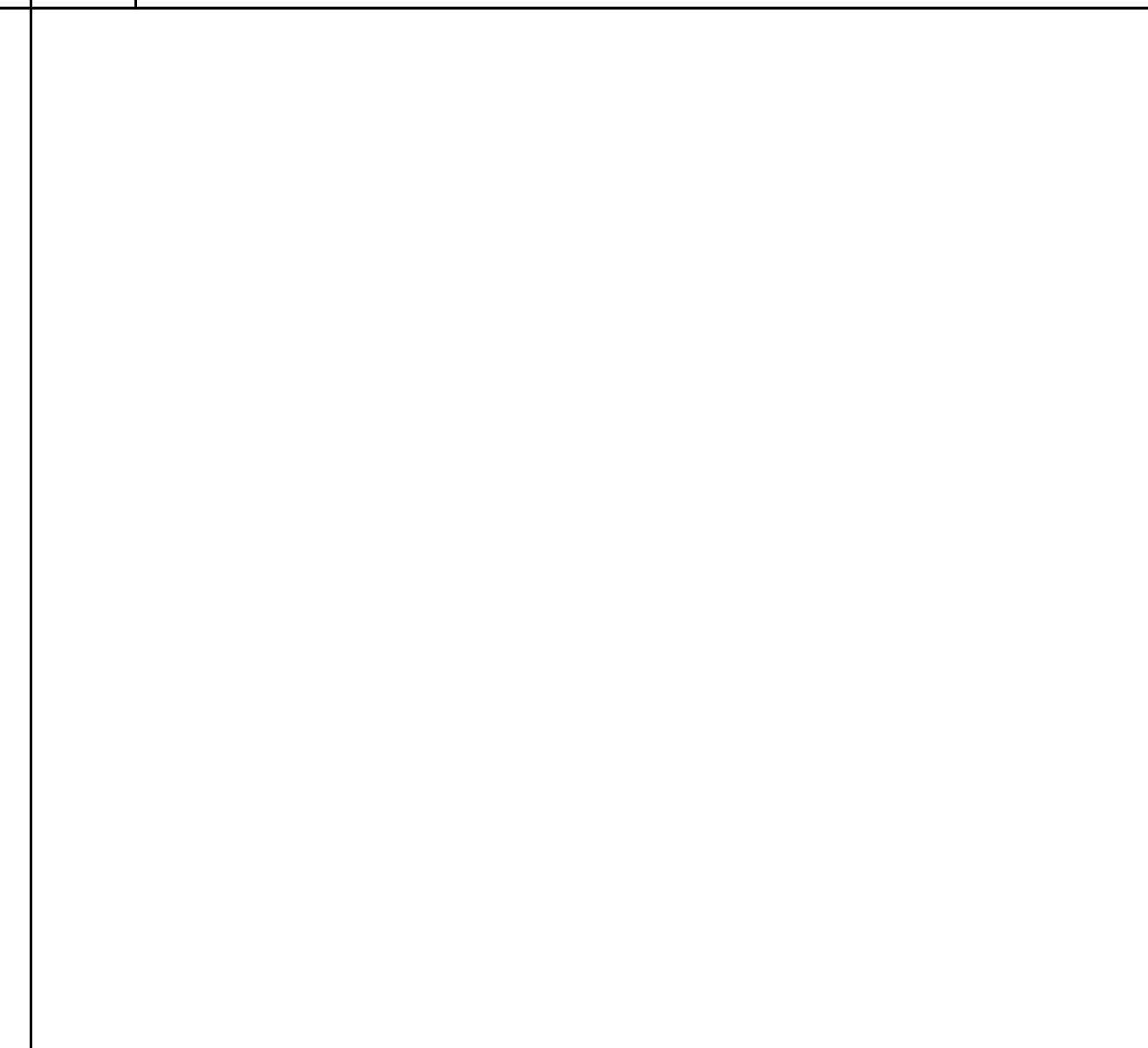
A4 NOT USED
 REFERENCED FROM: SCALE:



A5 UNUSED
 REFERENCED FROM: SCALE:



C2 NOT USED
 REFERENCED FROM: SCALE:



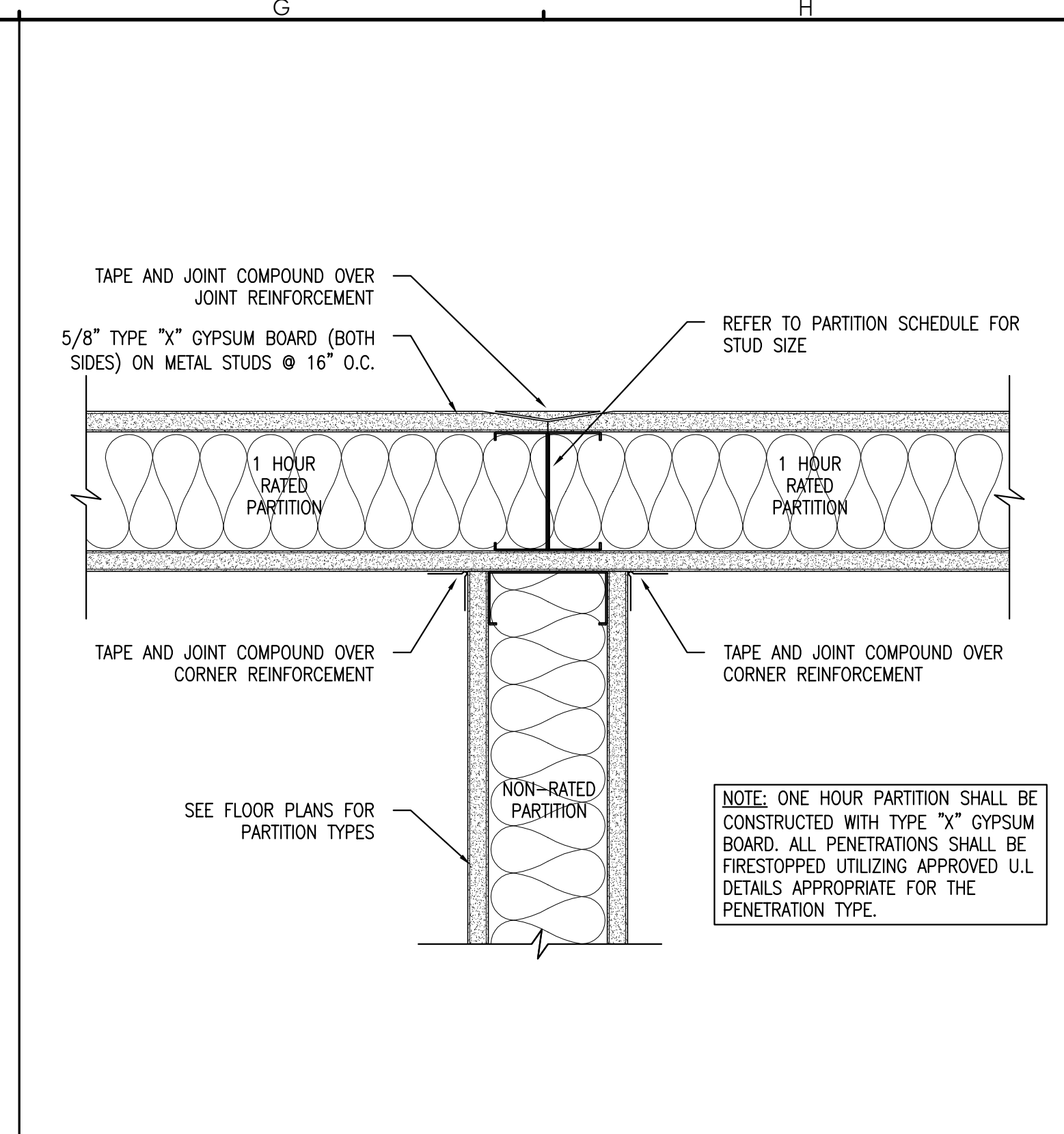
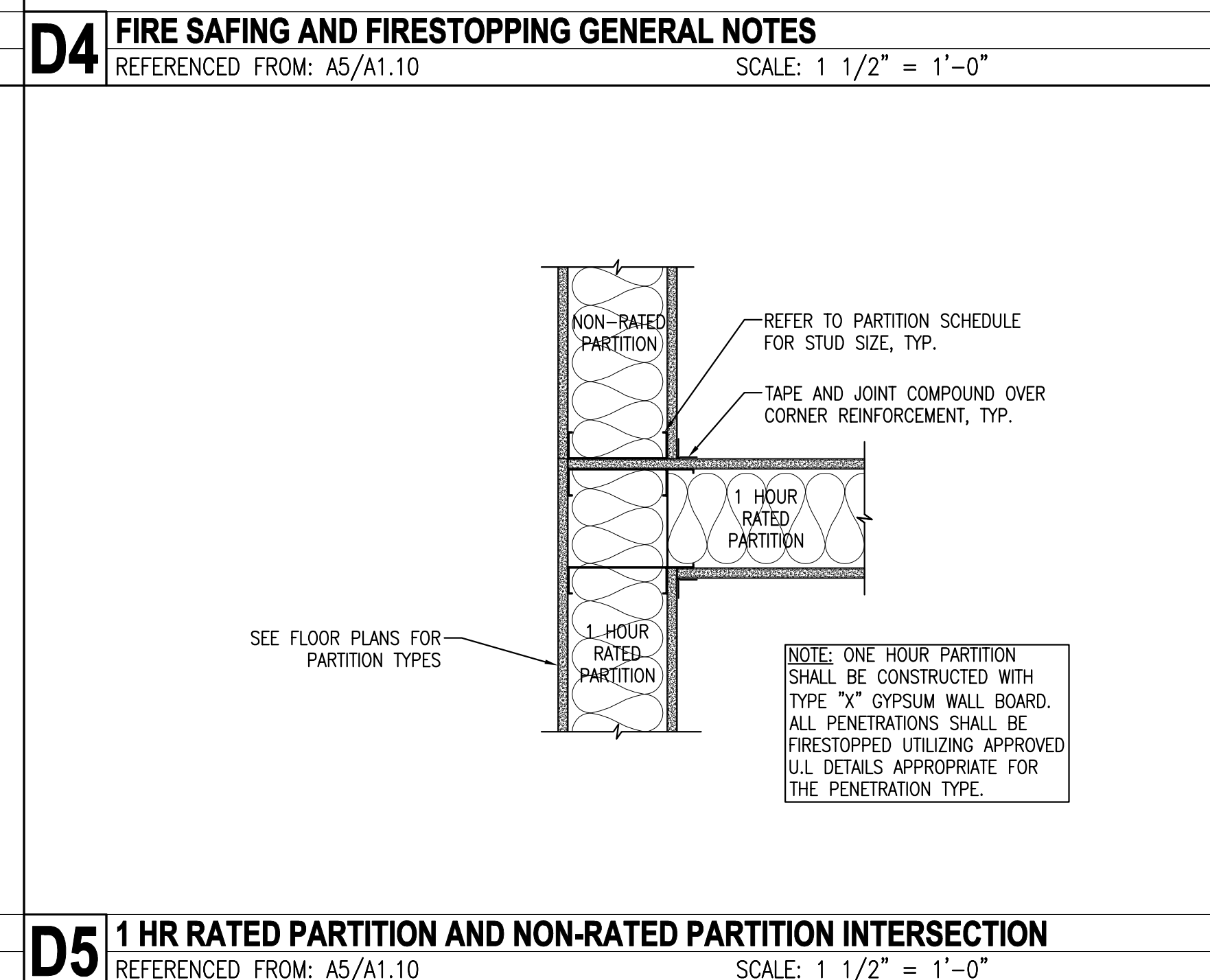
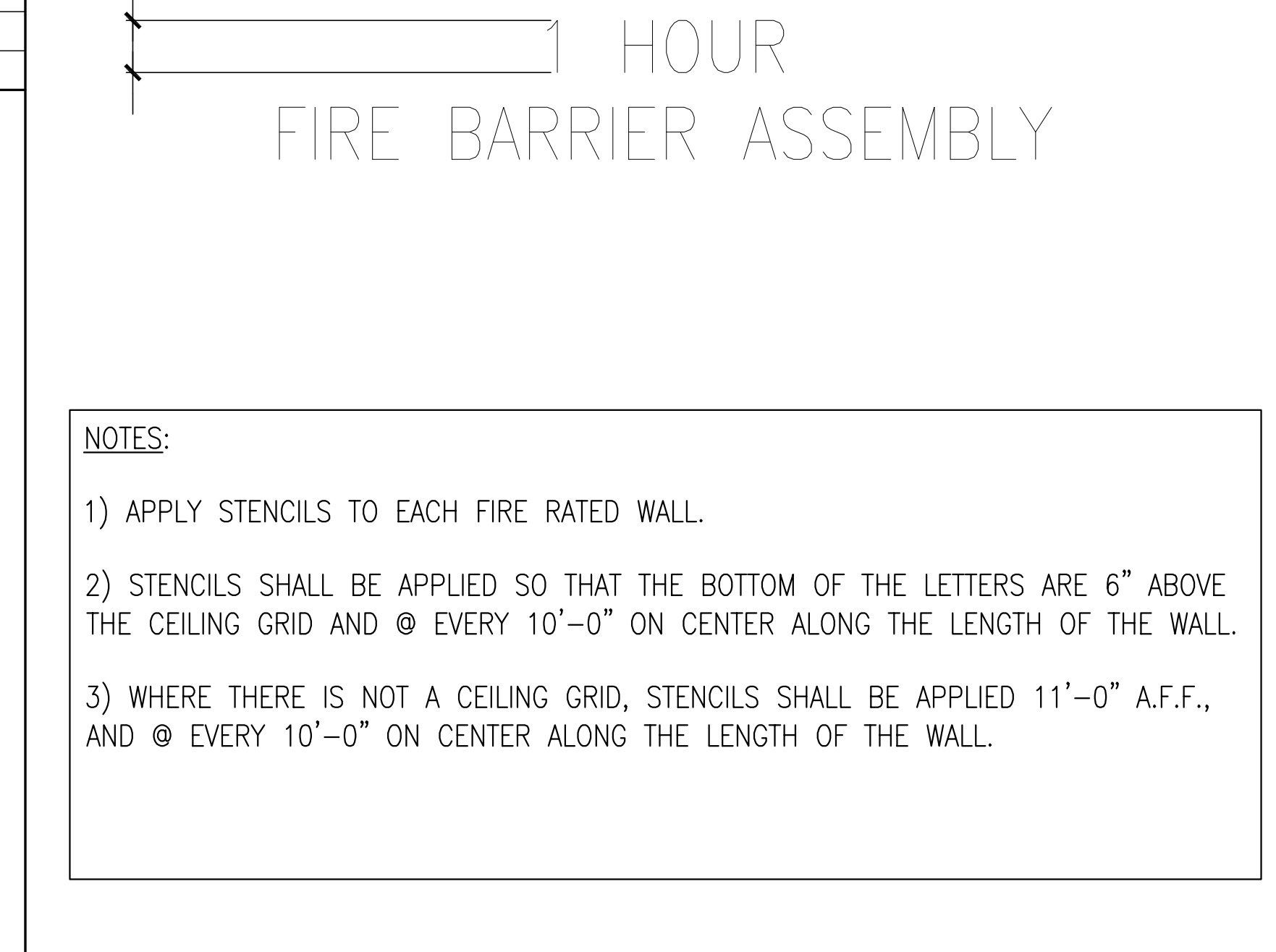
C4 NOT USED
 REFERENCED FROM: SCALE: 1 1/2" = 1'-0"



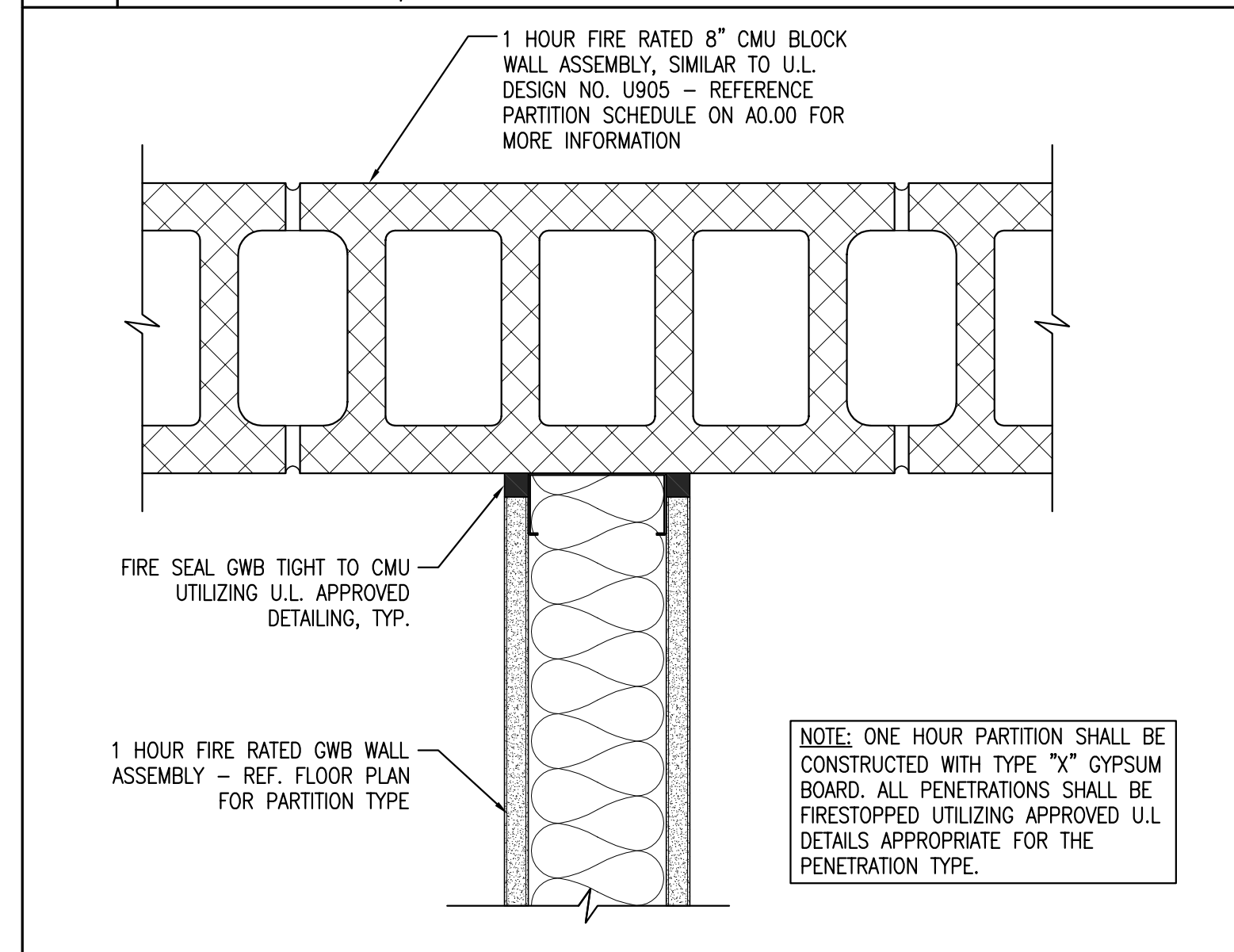
C5 UNUSED
 REFERENCED FROM: SCALE:

FIRE-SAFING AND FIRESTOPPING GENERAL NOTES:

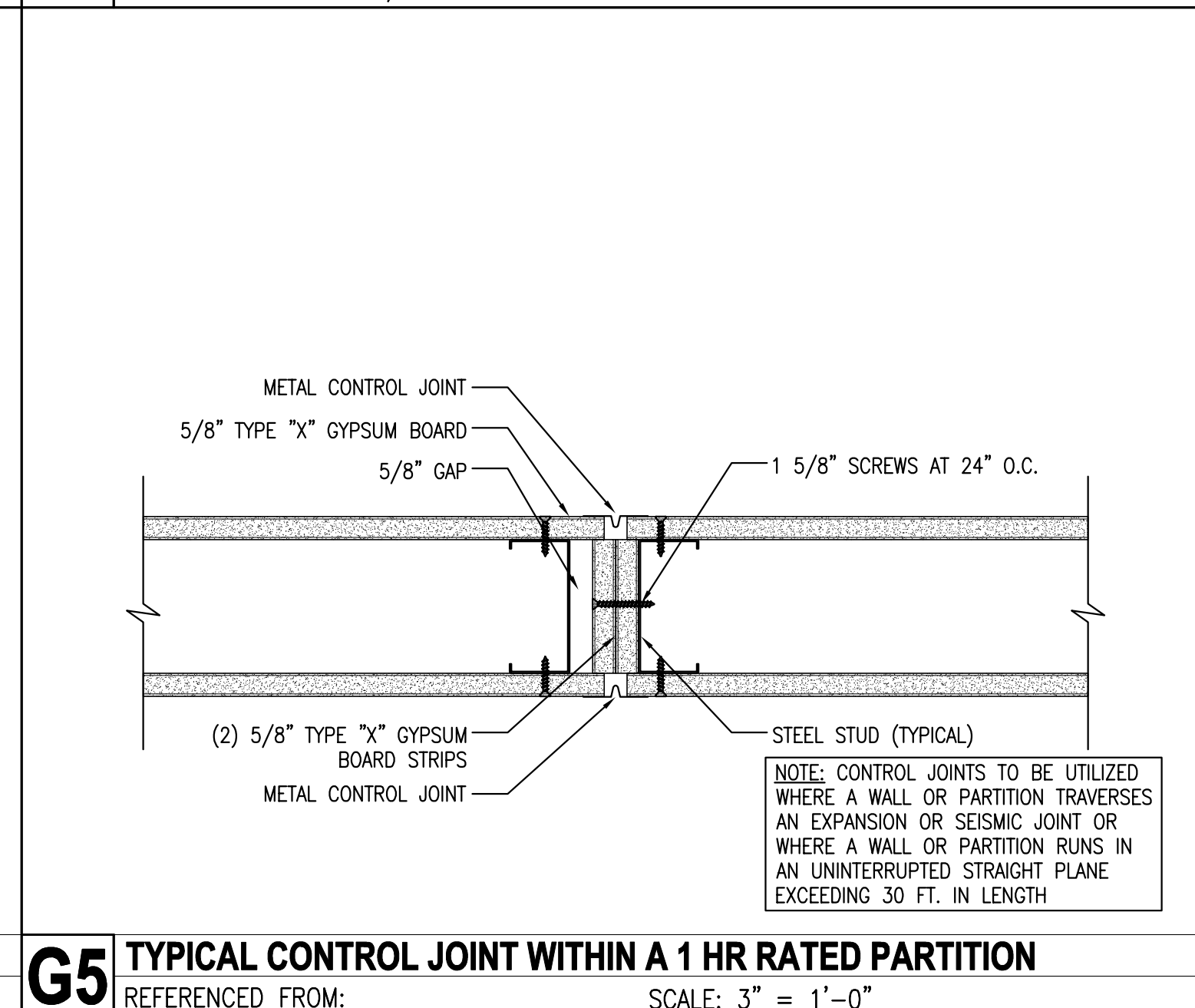
- FIRE SAFING AND FIRE STOPPING PENETRATIONS:**
 PROVIDE FIRE SAFING SYSTEM / MATERIAL AT ALL PENETRATIONS THRU FIRE-RATED ASSEMBLIES. UTILIZE ONLY AND CONFORM TO U.L. TESTED AND APPROVED DETAILING AND METHODS APPROPRIATE FOR THE CONDITION AT HAND. COORDINATE PROPOSED SAFING SYSTEMS AND MATERIALS FOR APPROPRIATENESS AND COMPATIBILITY WITH THE FIRE-RATING SYSTEM PENETRATED. REFERENCE SPECIFICATIONS FOR SUBMITTAL REVIEW AND APPROVAL REQUIREMENTS.
- FIRE SAFING AND FIRE STOPPING TOP OF FIRE-RATED WALL ASSEMBLIES AND JOINTS:**
 PROVIDE FIRE SAFING SYSTEM / MATERIAL, AS REQUIRED, TO PROPERLY SEAL ALL TOP OF FIRE RATED WALL ASSEMBLIES AND FLOOR / WALL JOINT CONDITIONS. UTILIZE ONLY AND CONFORM TO U.L. TESTED AND APPROVED DETAILING AND METHODS APPROPRIATE FOR THE CONDITION AT HAND. REFERENCE SPECIFICATIONS FOR SUBMITTAL REVIEW AND APPROVAL REQUIREMENTS.
- INAPPROPRIATE FIRE SEALANT / STOPPING MATERIAL USE:**
 THE CONTRACTOR SHALL NOT UTILIZE FIRE STOPPING / SEALANT AT ANY NON-FIRE-RATED CONDITIONS. UTILIZE FIRE STOPPING / SEALANT ONLY WHERE REQUIRED. FIRE STOPPING MATERIALS SHALL BE RED IN COLOR.
- FIRE STOPPING CONTRACTOR QUALIFICATIONS:**
 THE CONTRACTOR SHALL HIRE AND ENGAGE A FIRE STOPPING CONTRACTOR THAT REGULARLY ENGAGES IN THE APPLICATION OF FIRE STOPPING AND FIRE SAFING MATERIALS. THIS CONTRACTOR SHALL BE "CERTIFIED" IN THE USE AND APPLICATION OF ALL FIRE STOPPING AND SAFING MATERIAL AND THEIR INSTALLATION METHODS. FIRE STOPPING INSTALLATION "TRAINING" WILL NOT BE CONSIDERED A SUBSTITUTE FOR OBTAINING "CERTIFICATION".
- LABELING OF RATED ASSEMBLIES:**
 THE CONTRACTOR SHALL LABEL ALL RATED ASSEMBLIES AS SHOWN BELOW.



G2 1 HR RATED PARTITION AND NON-RATED PARTITION INTERSECTION
 REFERENCED FROM: A5/A1.10 SCALE: 3" = 1'-0"



G4 1 HR RATED GWB PART. AND 1 HR RATED CMU PART. INTERSECTION
 REFERENCED FROM: A5/A1.10 SCALE: 3" = 1'-0"



G5 TYPICAL CONTROL JOINT WITHIN A 1 HR RATED PARTITION
 REFERENCED FROM: SCALE: 3" = 1'-0"

CWS ARCHITECTS
 ARCHITECTURE | INTERIOR DESIGN
 264 US Route One Box 6, Suite 100-2A
 Scarborough ME 04074
 OFFICE: 207 774 4441 CWSARCH.COM

LICENSED ARCHITECT
 GUY T. LABRECQUE, JR.
 No. 2558
 STATE OF MAINE

CWS ARCHITECTS
 ARCHITECTURE | INTERIOR DESIGN
 264 US ROUTE ONE
 BOX 6, SUITE 100-2A
 SCARBOROUGH, MAINE 04074
 T: 207-774-4441
 WWW.CWSARCH.COM

DESIGNER

OWNER
FAIRPOINT COMMUNICATIONS
 1 DAVIS ROAD
 PORTLAND ME 04101

PROJECT
5 DAVIS FARM ROAD MERGER
 5 DAVIS FARM ROAD
 PORTLAND ME 04103

DRAWING
FIRE RATED PARTITION DETAILS
 CWS PROJECT NUMBER: 17048

REVISIONS

NO.	DATE	DESCRIPTION

DRAWING NUMBER
LS2.00

SCALE: AS NOTED
 DATE: 1-2-2018

ISSUED FOR PERMITTING