

CWS ARCHITECTS
ARCHITECTURE | INTERIOR DESIGN
264 US ROUTE ONE
BOX 6, SUITE 100-2A
SCARBOROUGH, MAINE 04074
T: 207.774.4441
WWW.CWSARCH.COM

OWNER
FAIRPOINT COMMUNICATIONS
1 DAVIS ROAD
PORTLAND ME 04101

PROJECT
5 DAVIS FARM ROAD MERGER
5 DAVIS FARM ROAD
PORTLAND ME 04103

DRAWING
FIRST FLOOR LIFE SAFETY PLAN

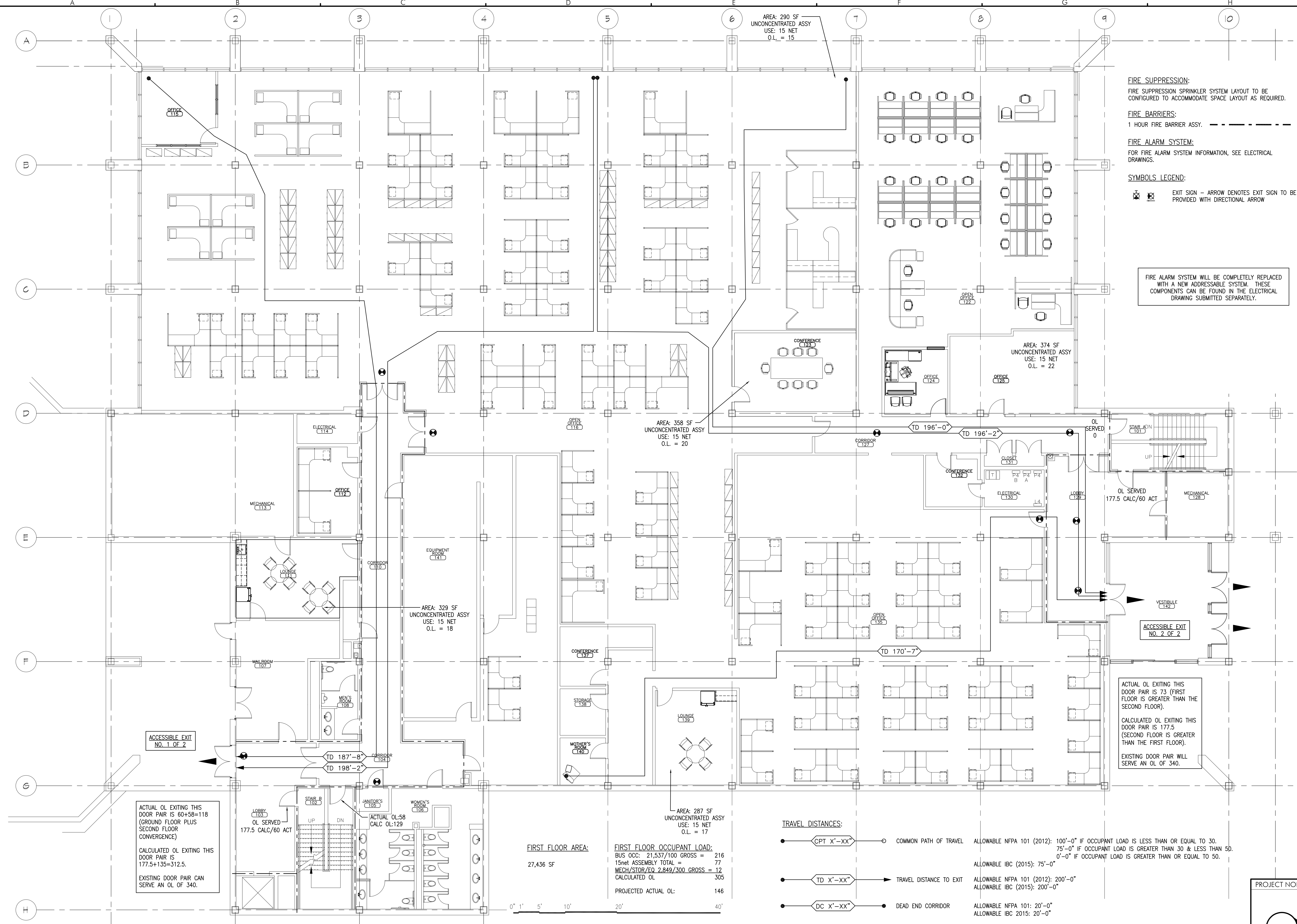
REVISIONS

NO.	DESCRIPTION

DRAWING NUMBER
LS1.01

SCALE: AS NOTED
DATE: 1-2-2018

ISSUED FOR PERMITTING



FIRE SUPPRESSION:
FIRE SUPPRESSION SPRINKLER SYSTEM LAYOUT TO BE CONFIGURED TO ACCOMMODATE SPACE LAYOUT AS REQUIRED.

FIRE BARRIERS:
1 HOUR FIRE BARRIER ASSY. - - - - -

FIRE ALARM SYSTEM:
FOR FIRE ALARM SYSTEM INFORMATION, SEE ELECTRICAL DRAWINGS.

SYMBOLS LEGEND:
EXIT SIGN - ARROW DENOTES EXIT SIGN TO BE PROVIDED WITH DIRECTIONAL ARROW

FIRE ALARM SYSTEM WILL BE COMPLETELY REPLACED WITH A NEW ADDRESSABLE SYSTEM. THESE COMPONENTS CAN BE FOUND IN THE ELECTRICAL DRAWING SUBMITTED SEPARATELY.

ACTUAL OL EXITING THIS DOOR PAIR IS 73 (FIRST FLOOR IS GREATER THAN THE SECOND FLOOR).
CALCULATED OL EXITING THIS DOOR PAIR IS 177.5 (SECOND FLOOR IS GREATER THAN THE FIRST FLOOR).
EXISTING DOOR PAIR WILL SERVE AN OL OF 340.

ACTUAL OL EXITING THIS DOOR PAIR IS 60+58=118 (GROUND FLOOR PLUS SECOND FLOOR CONVERGENCE)
CALCULATED OL EXITING THIS DOOR PAIR IS 177.5+135=312.5.
EXISTING DOOR PAIR CAN SERVE AN OL OF 340.

FIRST FLOOR AREA:
27,436 SF

FIRST FLOOR OCCUPANT LOAD:
BUS OCC: 21,537/100 GROSS = 216
15net ASSEMBLY TOTAL = 77
MECH/STOR/EO 2,849/300 GROSS = 12
CALCULATED OL = 305
PROJECTED ACTUAL OL: 146

TRAVEL DISTANCES:

- CPT X'-XX' COMMON PATH OF TRAVEL
- TD X'-XX' TRAVEL DISTANCE TO EXIT
- DC X'-XX' DEAD END CORRIDOR

ALLOWABLE NFPA 101 (2012): 100'-0" IF OCCUPANT LOAD IS LESS THAN OR EQUAL TO 30.
75'-0" IF OCCUPANT LOAD IS GREATER THAN 30 & LESS THAN 50.
0'-0" IF OCCUPANT LOAD IS GREATER THAN OR EQUAL TO 50.

ALLOWABLE IBC (2015): 75'-0"

ALLOWABLE NFPA 101 (2012): 200'-0"
ALLOWABLE IBC (2015): 200'-0"

ALLOWABLE NFPA 101: 20'-0"
ALLOWABLE IBC 2015: 20'-0"

PROJECT NORTH

