

CWS ARCHITECTS
ARCHITECTURE | INTERIOR DESIGN
264 US ROUTE ONE
BOX 6, SUITE 100-2A
SCARBOROUGH, MAINE 04074
T: 207-774-4441
WWW.CWSARCH.COM

OWNER
FAIRPOINT COMMUNICATIONS
1 DAVIS ROAD
PORTLAND ME 04101

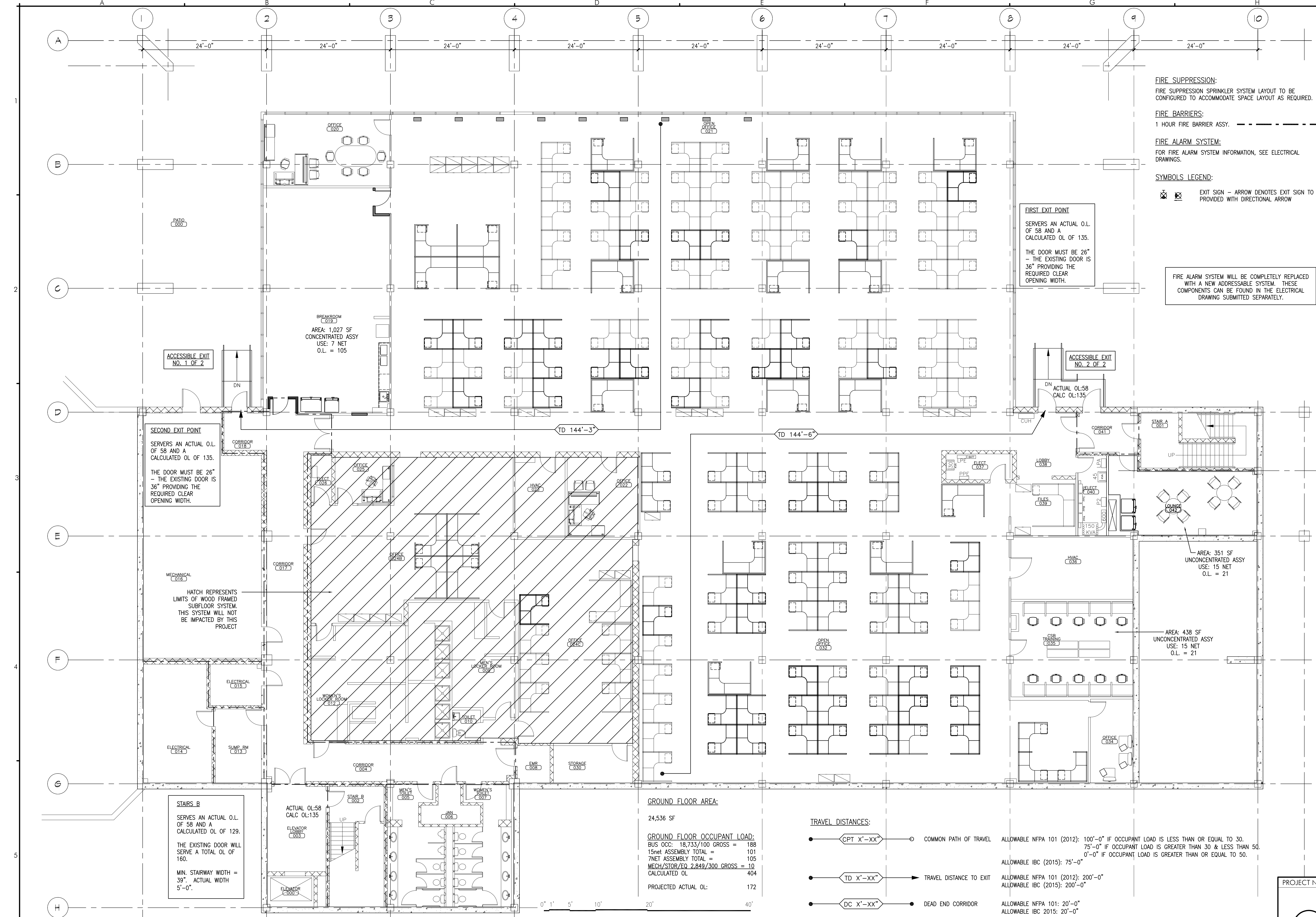
PROJECT
5 DAVIS FARM ROAD MERGER
5 DAVIS FARM ROAD
PORTLAND ME 04103

DRAWING
GROUND FLOOR LIFE SAFETY PLAN
CWS PROJECT NUMBER: 17048

REVISIONS

NO.	DESCRIPTION

DRAWING NUMBER
LS1.00
SCALE: AS NOTED
DATE: 1-2-2018
ISSUED FOR PERMITTING



FIRE SUPPRESSION:
FIRE SUPPRESSION SPRINKLER SYSTEM LAYOUT TO BE CONFIGURED TO ACCOMMODATE SPACE LAYOUT AS REQUIRED.

FIRE BARRIERS:
1 HOUR FIRE BARRIER ASSY. - - - - -

FIRE ALARM SYSTEM:
FOR FIRE ALARM SYSTEM INFORMATION, SEE ELECTRICAL DRAWINGS.

SYMBOLS LEGEND:
EXIT SIGN - ARROW DENOTES EXIT SIGN TO BE PROVIDED WITH DIRECTIONAL ARROW

FIRE ALARM SYSTEM WILL BE COMPLETELY REPLACED WITH A NEW ADDRESSABLE SYSTEM. THESE COMPONENTS CAN BE FOUND IN THE ELECTRICAL DRAWING SUBMITTED SEPARATELY.

FIRST EXIT POINT
SERVES AN ACTUAL O.L. OF 58 AND A CALCULATED O.L. OF 135.
THE DOOR MUST BE 26" - THE EXISTING DOOR IS 36" PROVIDING THE REQUIRED CLEAR OPENING WIDTH.

SECOND EXIT POINT
SERVES AN ACTUAL O.L. OF 58 AND A CALCULATED O.L. OF 135.
THE DOOR MUST BE 26" - THE EXISTING DOOR IS 36" PROVIDING THE REQUIRED CLEAR OPENING WIDTH.

STAIRS B
SERVES AN ACTUAL O.L. OF 58 AND A CALCULATED O.L. OF 129.
THE EXISTING DOOR WILL SERVE A TOTAL O.L. OF 160.
MIN. STAIRWAY WIDTH = 39". ACTUAL WIDTH 5'-0".

GROUND FLOOR AREA:
24,536 SF

GROUND FLOOR OCCUPANT LOAD:
BUS OCC: 18,733/100 GROSS = 188
15net ASSEMBLY TOTAL = 101
7NET ASSEMBLY TOTAL = 105
MECH/STOR/EQ 2,849/300 GROSS = 10
CALCULATED O.L. 404

PROJECTED ACTUAL O.L.: 172

TRAVEL DISTANCES:

- CPT X'-XX" COMMON PATH OF TRAVEL ALLOWABLE NFPA 101 (2012): 100'-0" IF OCCUPANT LOAD IS LESS THAN OR EQUAL TO 30. 75'-0" IF OCCUPANT LOAD IS GREATER THAN 30 & LESS THAN 50. 0'-0" IF OCCUPANT LOAD IS GREATER THAN OR EQUAL TO 50.
- TD X'-XX" TRAVEL DISTANCE TO EXIT ALLOWABLE NFPA 101 (2012): 200'-0" ALLOWABLE IBC (2015): 200'-0"
- DC X'-XX" DEAD END CORRIDOR ALLOWABLE NFPA 101: 20'-0" ALLOWABLE IBC 2015: 20'-0"

