

DESIGNER

CWS ARCHITECTS
ARCHITECTURE | INTERIOR DESIGN
264 US ROUTE ONE
BOX 6, SUITE 100-2A
SCARBOROUGH, MAINE 04074
T: 207-774-4441
WWW.CWSARCH.COM

OWNER

FAIRPOINT COMMUNICATIONS

1 DAVIS FARM ROAD
PORTLAND ME 04101

PROJECT

5 DAVIS FARM ROAD MERGER

5 DAVIS FARM ROAD
PORTLAND ME 04103

DRAWING

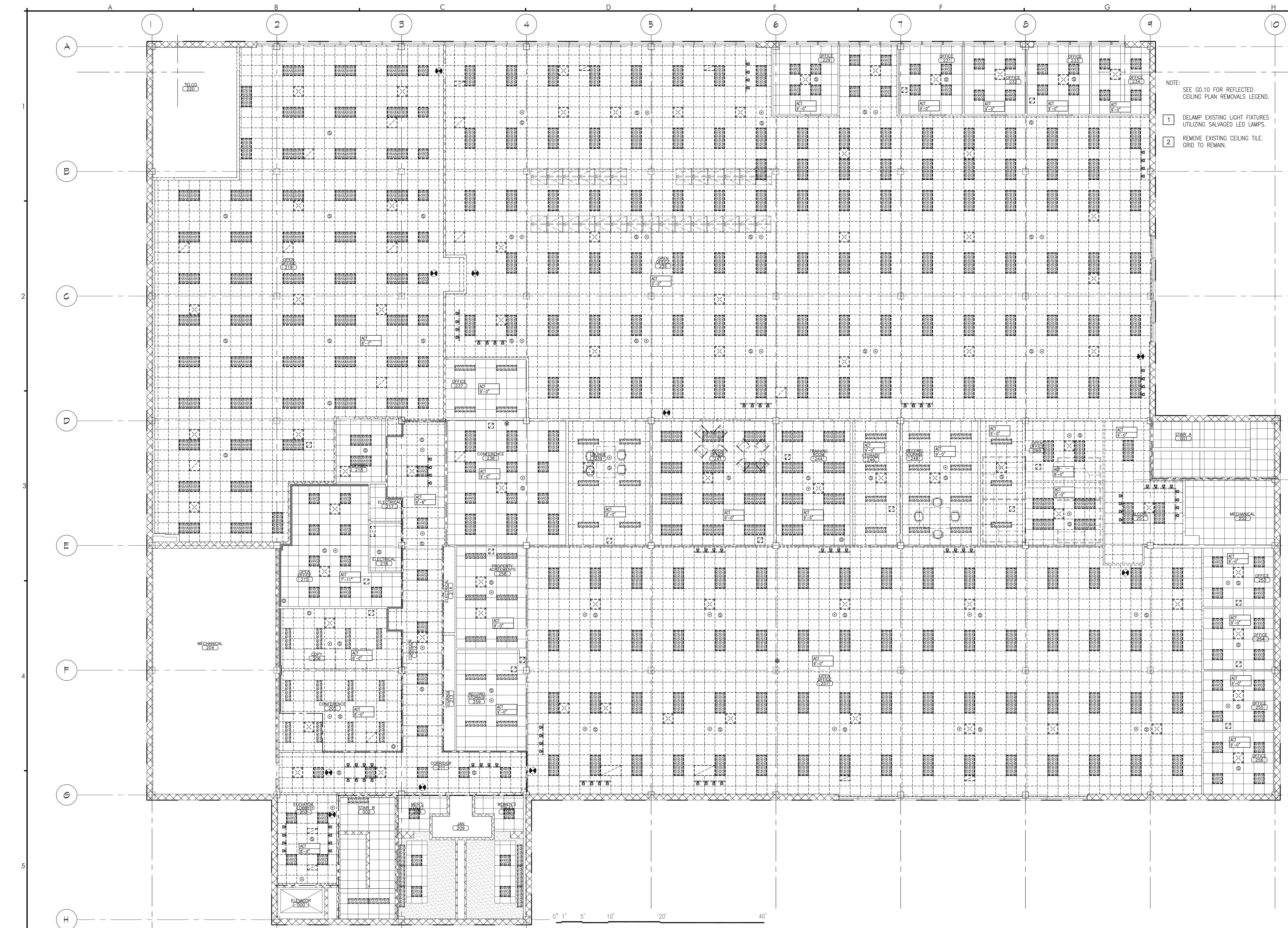
SECOND FLOOR REFLECTED CEILING REMOVALS PLAN

CWS PROJECT NUMBER: 17048

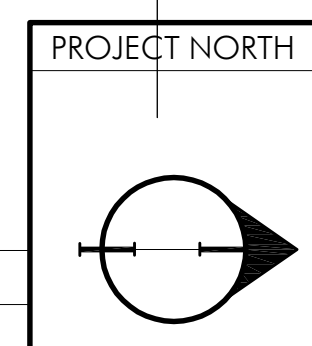
REVISIONS

REVISIONS

DRAWING NUMBER
AD2.02
SCALE: AS NOTED
DATE: 11-21-2017



- NOTE: SEE G0.10 FOR REFLECTED CEILING PLAN REMOVALS LEGEND.
- 1 DELAMP EXISTING LIGHT FIXTURES UTILIZING SALVAGED LED LAMPS.
 - 2 REMOVE EXISTING CEILING TILE. GRID TO REMAIN.



A5 SECOND FLOOR REFLECTED CEILING REMOVALS PLAN
REFERENCED FROM: SCALE: 1/8"=1'-0"