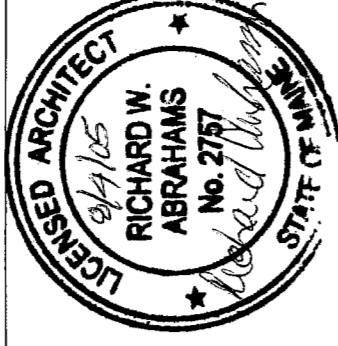


**RICHARD
ABRAHAMS
ASSOCIATES**
ARCHITECTS

5 IRS DRIVE
SCARBOROUGH, ME 04074
VOICE: FAX: (207) 885-0214
E-MAIL: LABRAHAMS@CARTHLINK.NET

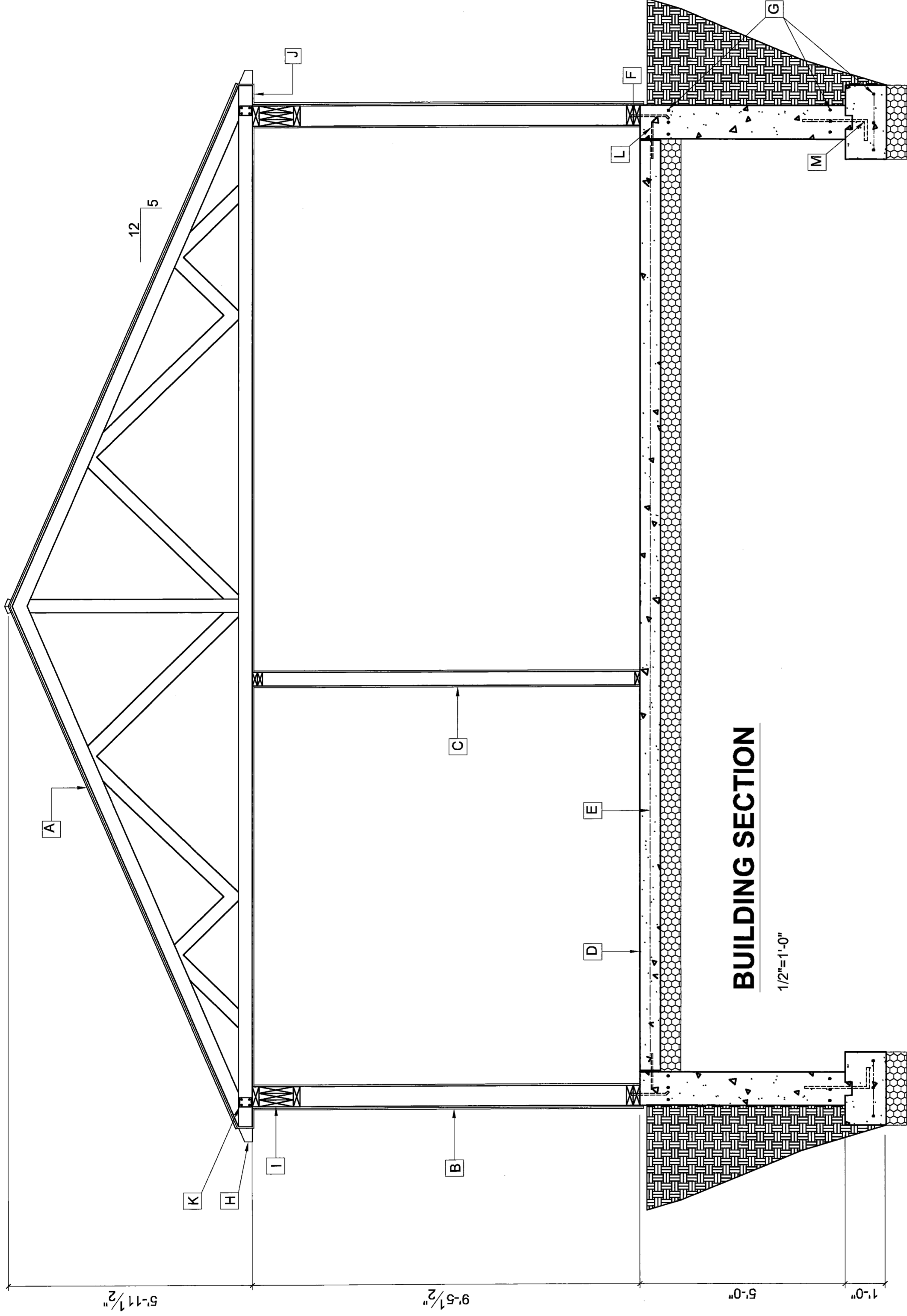


DATE	6-16-05
SCALE	SHOWN
DWN. BY	RWA
JOB NO.	
CHKD BY	
REV. 1	
REV. 2	

THE GROSSO COMPANY
PROPOSED STORAGE
BUILDING
980 RIVERSIDE STREET
PORTLAND, ME 04103

OWNER
THE GROSSO
COMPANY
980 RIVERSIDE ST.
PORTLAND, ME 04103

A-2



BUILDING SECTION

1/2"=1'-0"

KEYNOTES

- A** TYP. ROOF: ASPHALT SHINGLES ON BLDG PAPER ON 1/2" T&G PLYWD. SHEATHING ON WOOD ROOF TRUSS (DESIGNED BY TRUSS MANUF).
- B** TYP. EXTER. WALL: VINYL SIDING ON BUILDING WRAP ON 5/8" T&G PLYWD SHEATHING ON 2X6 @16" O.C. WD. STUDS.
- C** TYP. INTER. WALL: 1/2" OSB EACH SIDE OF 2X4 @16" O.C. WD. STUDS.
- D** TYP. FLOOR: 6" REINF. CONC. SLAB ON 6 MIL POLY VAPOR BARRIER ON 6" COMPACT GRAVEL.
- E** STEEL REINF: 6 X 6 / W1.4 X W1.4.
- F** 1/2" DIA. STEEL ANCHOR BOLT @ 4'-0" O.C. EMBED IN CONC. MIN. 7" (TYP).
- G** (3) # 5 BARS CONTINUOUS (BOTH WAYS @ FTGS) (TYP).
- H** CONT. ALUM. GUTTER AND LEADER (TYP).
- I** (3) 2 X 10 HEADER AT DOORS (TYP).
- J** CONT. VINYL SOFFIT VENT (TYP).
- K** STEEL HOLD DOWN ANCHORS TYP @ EA. TRUSS BOTH ENDS.
- L** 1/2" DIA. STEEL DOWEL @ 4'-0" O.C. EMBED MIN. 7" EA. END (TYP).
- M** # 5 BAR @ 4'-0" O.C. MIN. 4" COVER AND MIN. 12" FROM CORNERS (TYP).

CONNECTION	FASTENING	LOCATION
TOP PLATE TO STUD	(2) 16D COMMON NAILS	TOE NAIL
STUD TO SOLE PLATE	(2) 16D COMMON NAILS OR (4) 8D COMMON NAIL	END NAIL TOE NAIL
DOUBLE TOP PLATES	16D @ 16" O.C. COMMON NAIL	TYPICAL FACE NAIL
TOP PLATES LAPS & INTERSECTIONS	(2) 16D COMMON NAILS	FACE NAIL
CONTINUOUS HEADER TO STUD	(4) 8D COMMON NAILS	TOE NAIL
1/2" FIBERBOARD SHEATHING TO FRAMING	6D COMMON NAIL OR NO. 11 GA ROOFING NAIL OR NO. 16 GA. STAPLE	FACE NAIL OR STAPLE
1/2" WOOD STRUCTURAL PANELS & PARTICLE BOARD TO FRAMING	8D COMMON NAIL FOR ROOF 6D COMMON NAIL FOR WALL	FACE NAIL