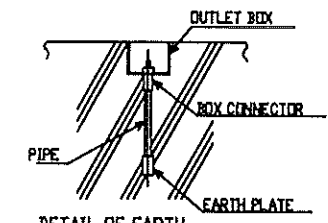
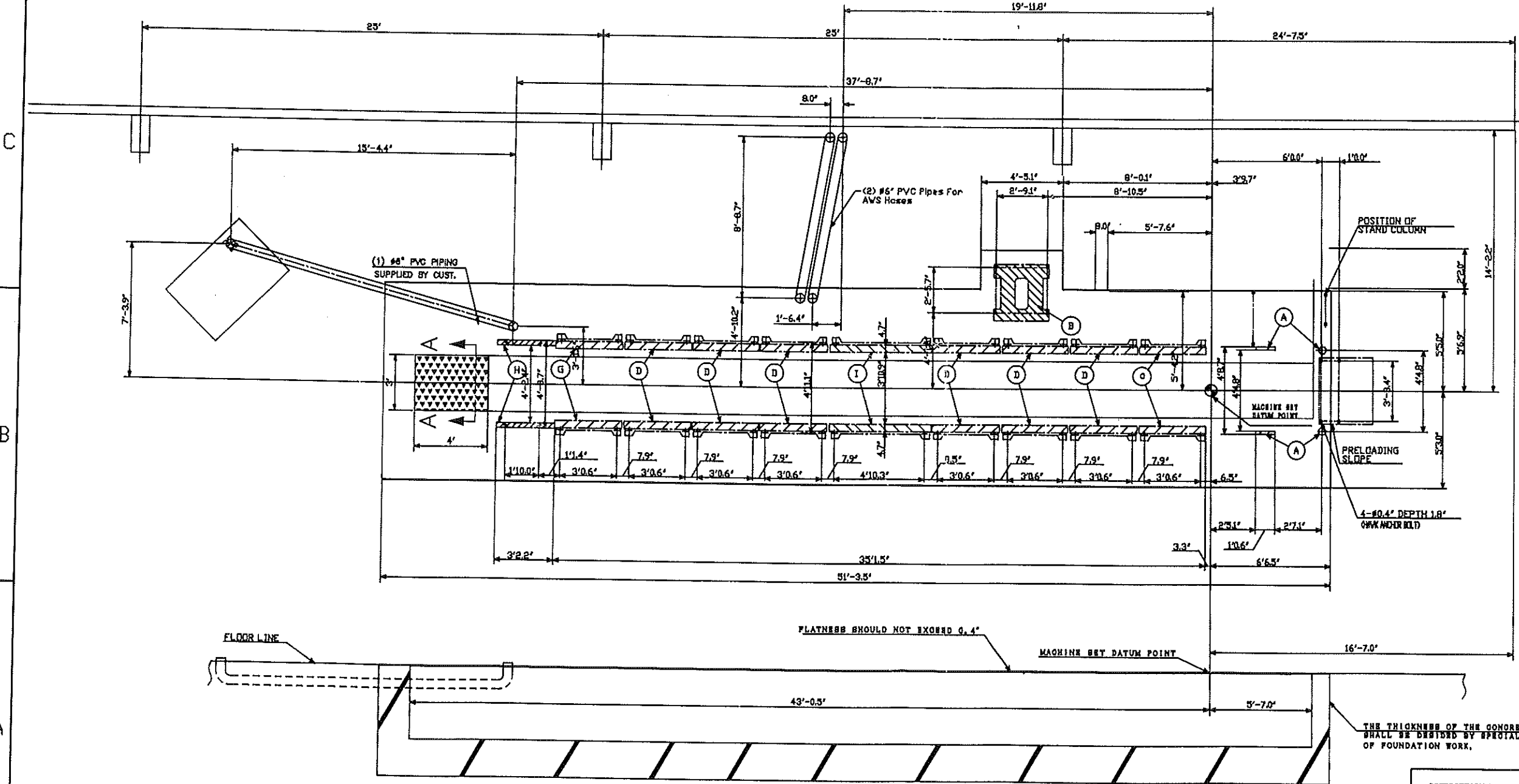
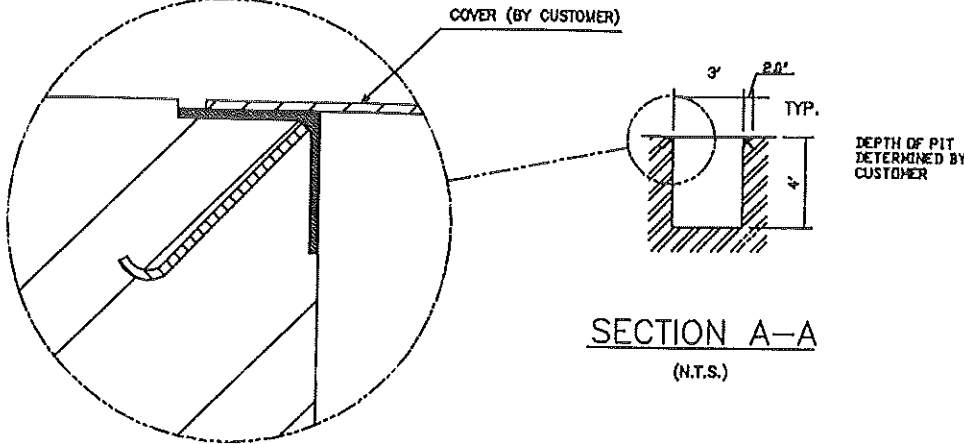


REV	DESCRIPTION	DATE	BY	CHK'D
2				

FOUNDATION WORK AND WIRING WORK WHICH ARE MENTIONED IN THIS DRAWING SHOULD BE CARRIED OUT BY CUSTOMER. FOUNDATION WORK

1. THE THICKNESS OF THE CONCRETE SHOULD BE ENOUGH TO BEAR THE MACHINE WEIGHT LISTED IN TABLE 1.
2. MACHINE TOTAL WEIGHT IS 127400lb.
3. THE MACHINE WEIGHTS ARE LOADED ON THE HATCHING SECTIONS WHICH ARE SHOWN IN THIS DRAWING.



DETAIL OF EARTH
THE MACHINE EARTH SHALL BE GROUNDED AN ELECTRIC WILL SEPARATE ANOTHER MACHINE TO PREVENT OPERATION ELECTRICAL ERROR.

TABLE 1

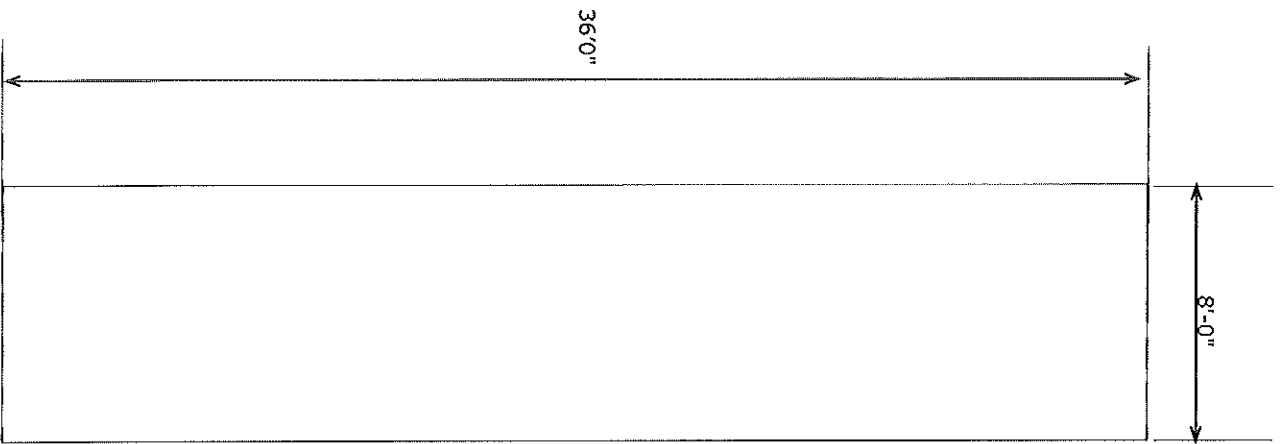
MARK	WEIGHT(lb)	NOTE
A	2400	FEEDER
B	2000	MOTOR
C	12400	UNIT (1 ST COLOR)
D	12600	UNIT (BESIDE 1 ST)
G	12600	UNIT (COATER)
H	5800	DELIVERY
I	16600	UNIT FOR REVERSING PAPER

PROPRIETARY NOTE
This drawing contains information that is confidential to MIP U.S.A., Inc. and is furnished in confidence for the sole purpose of supplying the recipient with required engineering data. The recipient shall not be disclosed or reproduced in any manner without the written consent of MIP U.S.A., Inc.

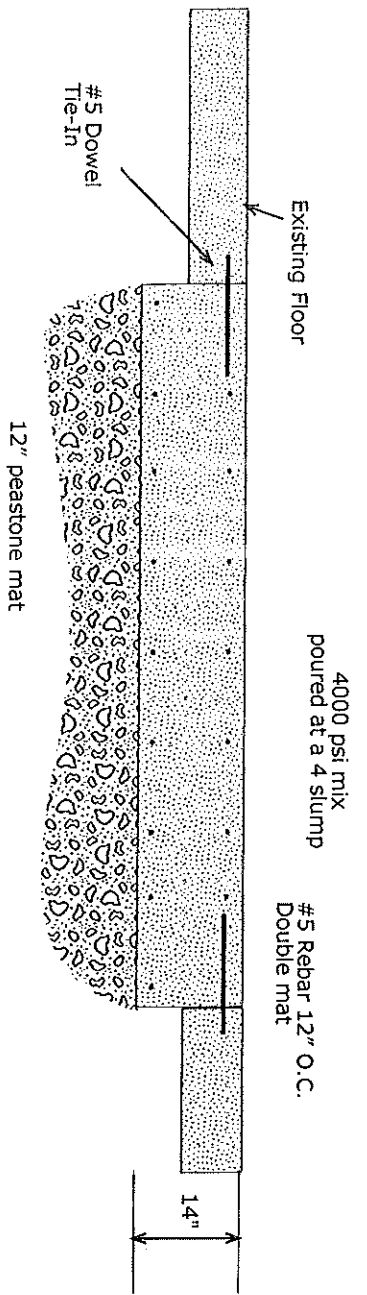
DATE: 8.28.03
SCALE: N.T.S.
SHEET 2

MIP U.S.A., Inc.
200 HAWAII BLVD., SUITE 200, HAWAII, HI 96720
TEL: 808/944-1111 FAX: 808/944-9999

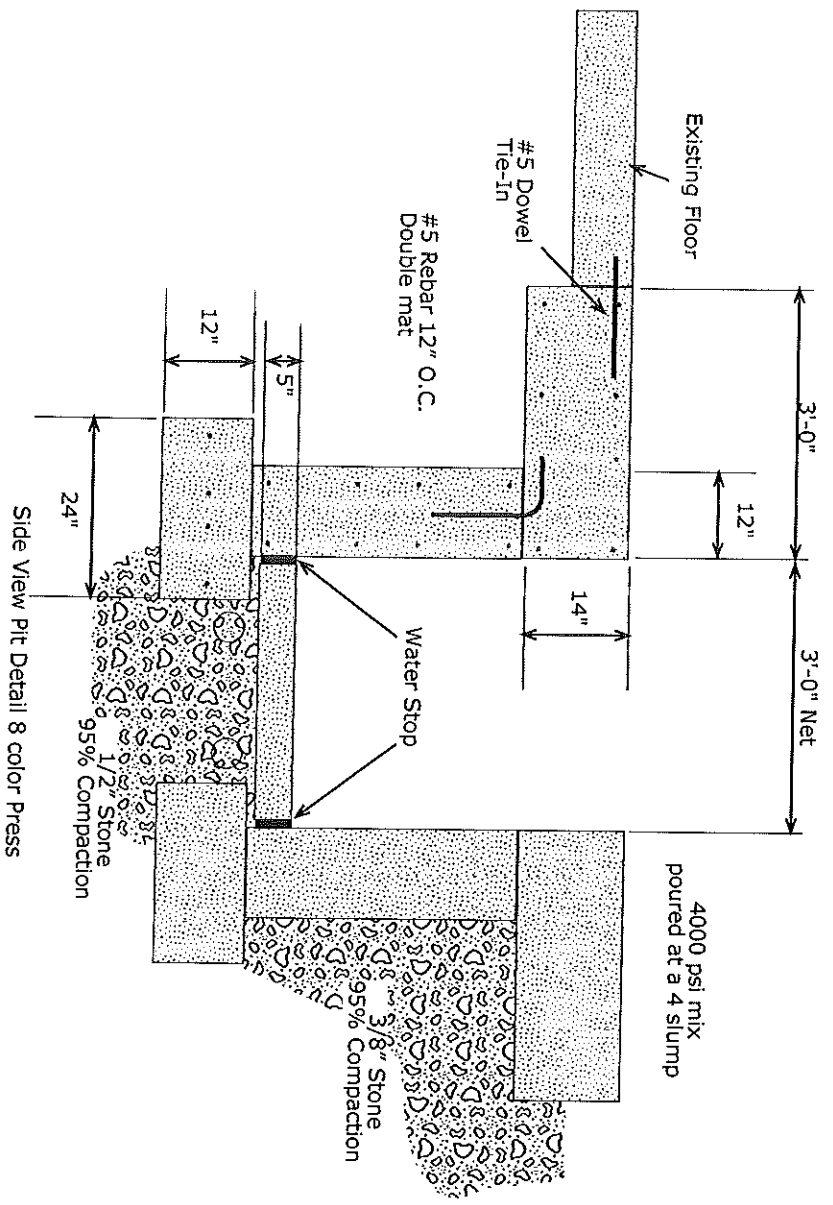
MITSUBISHI LITHOGRAPHIC PRESSES
TITLE: D3000R-8-C-DIS FOUNDATION INTERFACE DRAWING
SPECTRUM PRINTING & GRAPHICS



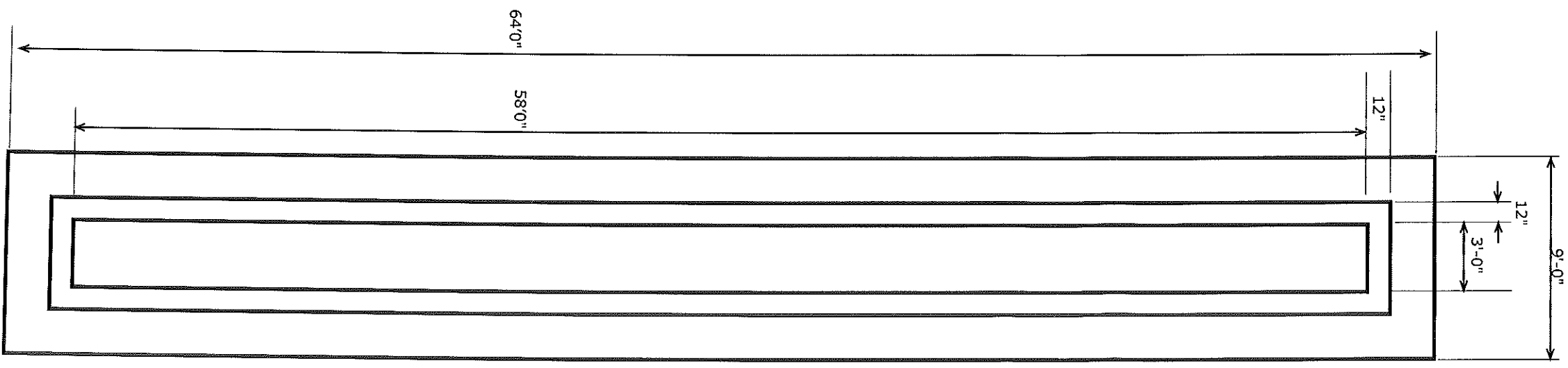
Top View Pad Detail 6 color Press



Side View Pad Detail 6 color Press



Side View Pit Detail 8 color Press



Top View Pit Detail 8 color Press