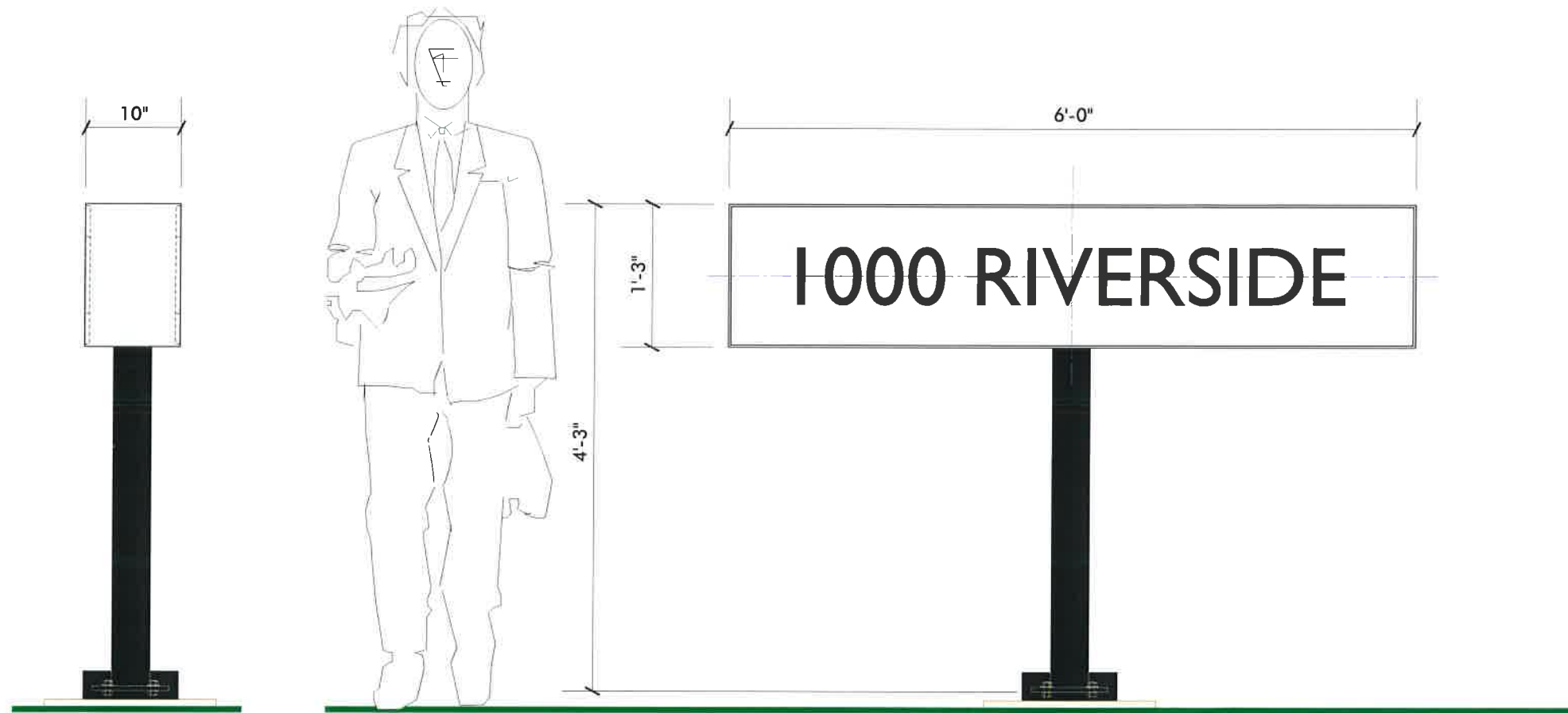


PLAN VIEW



END VIEW

DOUBLE FACE INTERNALLY ILLUMINATED ID  
 SCALE: 3/4" = 1'-0" (1) REQUIRED

FABRICATED ALUMINUM CABINET  
 (RECESSED FACE); SEE DWG. 2, PAINTED  
 MATTHEWS 'BRUSHED ALUMINUM' [41-342]

INTERNAL LED ILLUMINATION

3/16" WHITE TRANSLUCENT SG ACRYLIC  
 FACES, 1/2" THICK FLAT CUT-OUT BLACK  
 ACRYLIC COPY ADHERED TO FACE

4" SQ STL TUBE WITH WELDED 1/2" PLATE;  
 PAINTED BLACK (SLOTTED HOLES ROTATED  
 15°); FABRICATED ALUMINUM PLATE COVER,  
 PAINTED BLACK

MOUNT PLATE TO (4) EXISTING 1/2" ANCHOR  
 BOLTS IN CONCRETE BASE (SURVEYED)

**1000 Riverside  
 18707**

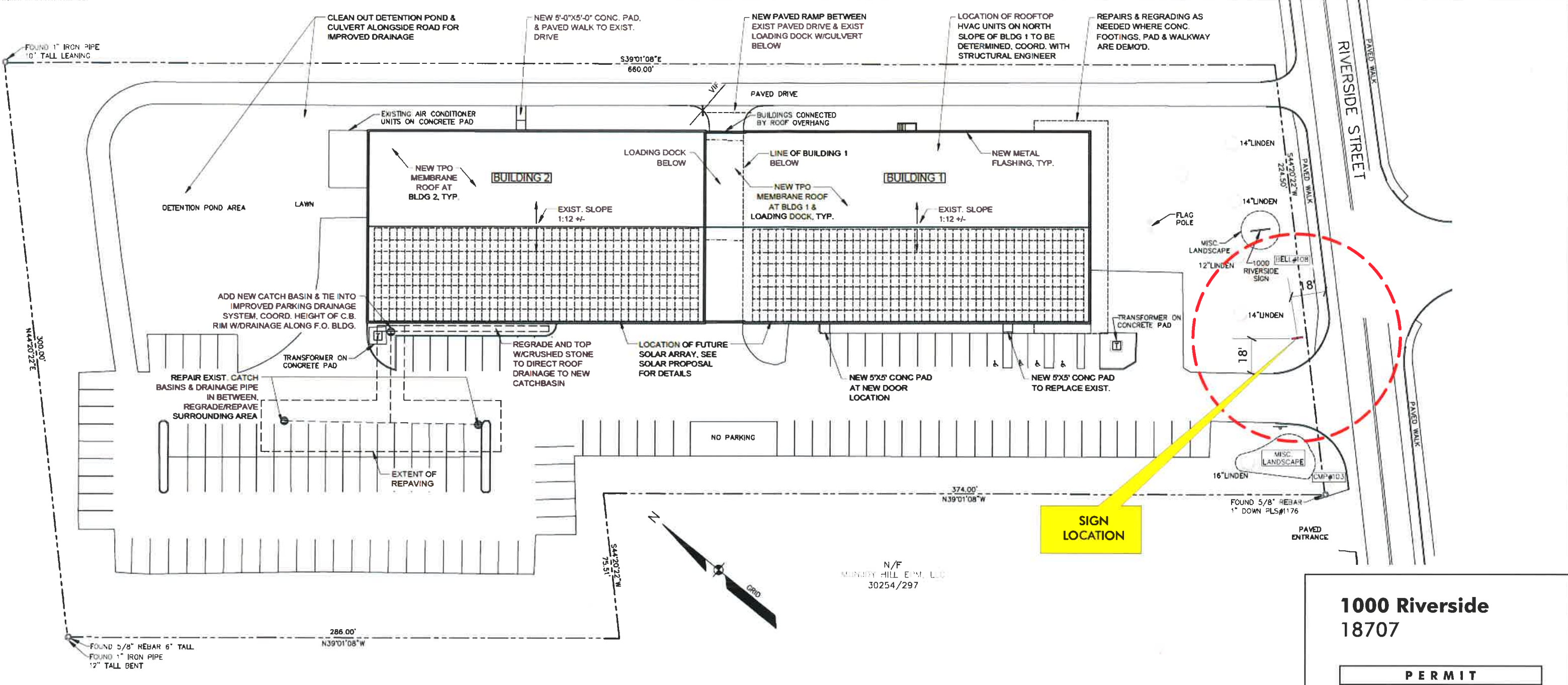
**PERMIT**

Location: Portland, ME  
 Drawing No.: 1 of 2  
 Drawn by: DS Rep.: RM  
 Date: 10.22.2014  
 Lead No.: ML021775  
 Gen Ref.:



Neokraft Signs Inc. <http://www.neokraft.com>  
 686 Main Street T:207.782.9654 F:782.0009  
 Lewiston, Maine 04240 1.800.339.2258

© COPYRIGHT 2014, BY NEOKRAFT SIGNS, INC.



**1 SITE PLAN/ROOF PLAN**  
 SCALE: 1/32" = 1'-0"

**1000 Riverside  
 18707**

**PERMIT**

Location: Portland, ME  
 Drawing No.: 2 of 2  
 Drawn by: DS Rep.: RM  
 Date: 10.22.2014  
 Lead No.: ML021775  
 Gen Ref.:



Neokraft Signs Inc. <http://www.neokraft.com>  
 686 Main Street T:207.782.9654 F:782.0009  
 Lewiston, Maine 04240 1.800.339.2258  
 © COPYRIGHT 2014, BY NEOKRAFT SIGNS, INC.