

GENERAL NOTES:

REV.	DESCRIPTION	DATE
1	DUCT MODIFICATIONS	3/11/14

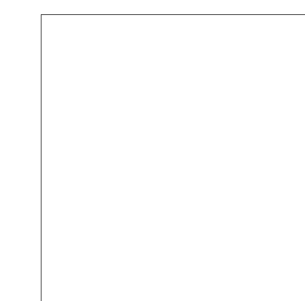
ISSUE STATUS:  
**ISSUED FOR CONSTRUCTION**

PROJECT:  
**MAINE HISTORICAL SOCIETY**  
PORTLAND, MAINE

SHEET TITLE:  
**MECHANICAL PLANS BUILDING # 1**

DATE: 2-28-2014	PROJECT # 13431
DRAWN: BSJ	CHECKED: FAM
SCALE: 1/8" = 1'-0"	

SHEET #  
**M-1**



GENERAL NOTES:


REV.	DESCRIPTION	DATE

ISSUE STATUS:  
**ISSUED FOR CONSTRUCTION**

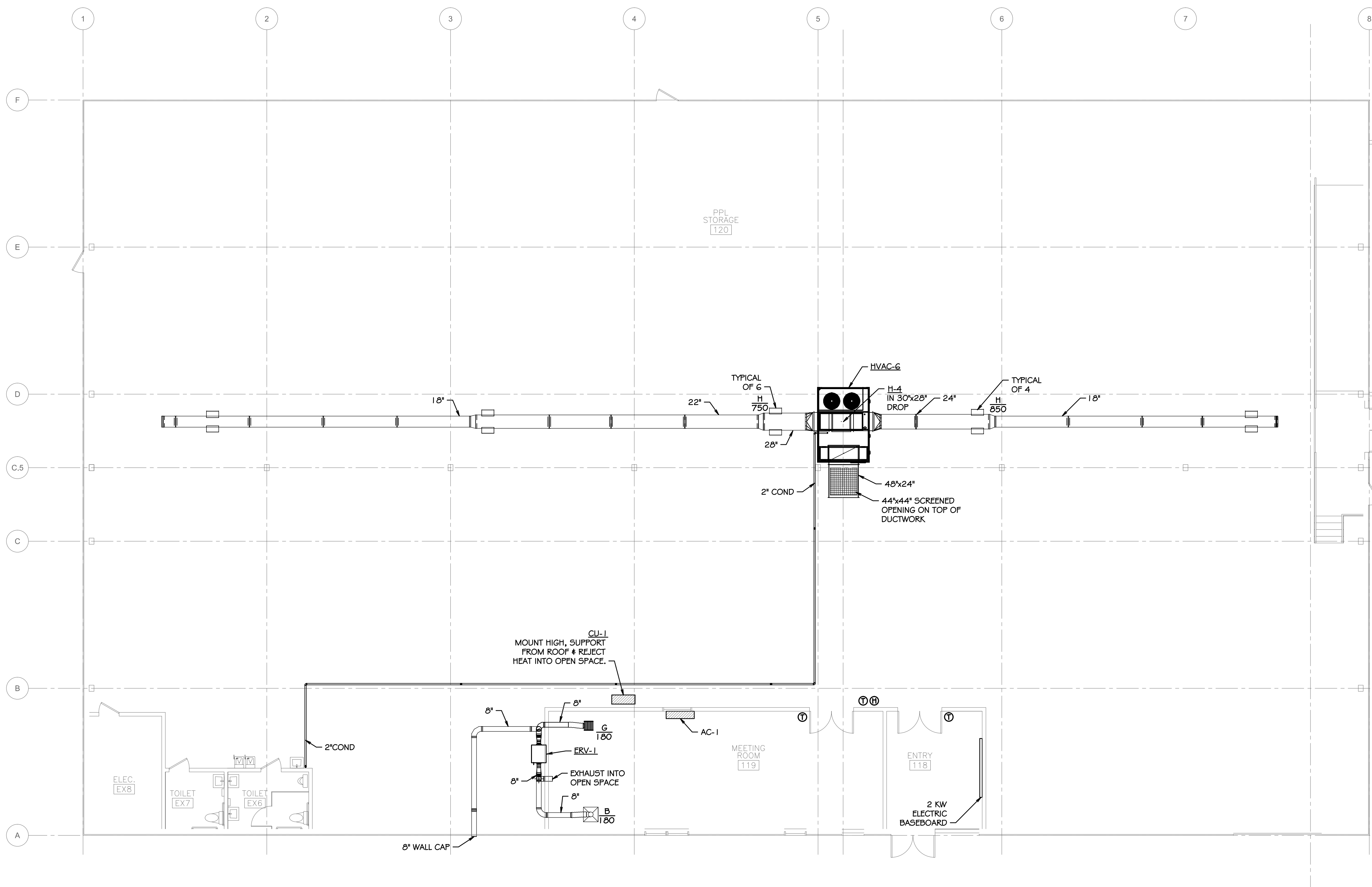
PROJECT:  
**MAINE HISTORICAL SOCIETY**  
PORTLAND, MAINE

SHEET TITLE:  
**MECHANICAL PLANS BUILDING #2**

DATE: 2-28-2014	PROJECT # 13431
DRAWN: BSJ	CHECKED: FAM
SCALE: 1/8" = 1'-0"	

SHEET #

**M-2**



**MINI-SPLIT AIR CONDITIONING UNIT**

AC-1: INDOOR SECTION: LG MODEL LS9307HV3, 30 MBH COOLING, 32 MBH HEATING, 20 LBS.  
CU-1: OUTDOOR SECTION: LG MODEL LS9307HV3, 209-230V/1, MCA 19, 30 AMP FUSE, 69 LBS, 3/8" LIQUID & 5/8" GAS CONN.

ERV SCHEDULE										
TAG	MFG. NO.	FAN PERFORMANCE				ELECTRICAL			APPROX. WEIGHT (LBS)	REMARKS
		CFM	ESP	HP	RPM	V/HZ/PH	FLA	MFA		
ERV-1	EV200	180	0.3	1.5	~	120/60/1	1.5	~	70	

BASED ON: RENEWAIRE

HVAC UNIT SCHEDULE													
TAG	MFG. NO.	CFM	S.P.	COOLING		HEATING		O.A. CFM	V/HZ/PH	MCA	FUSE	WEIGHT	OVERALL SIZE
				TOTAL	SENS.	INPUT	OUTPUT						
HVAC-1	YHC092F	3,000	1.0	92.0	66.63	150	120	300	208/60/3	41.9	50	1,180	63"x100"x52" HIGH
HVAC-2	YHC092F	3,000	0.5	92.0	66.63	150	120	500	208/60/3	41.9	50	1,064	63"x100"x52" HIGH
HVAC-3	YHC047C	1,600	0.5	50.5	37.22	80	64	375	208/60/3	29.4	40	725	53"x89"x41" HIGH
HVAC-4	YHC120E	4,000	0.5	117.47	92.29	200	160	900	208/60/3	50.3	60	1,369	63"x100"x52" HIGH
HVAC-5	YHC092F	3,000	1.0	92.0	66.63	150	120	300	208/60/3	41.9	50	1,180	63"x100"x52" HIGH
HVAC-6	YHD240F	8,000	0.75	246.14	168.4	400	324	1,000	460/60/3	50.0	60	2,434	84"x122"x64" HIGH

BASED ON: TRANE, COMPLETE WITH ECONOMIZERS, POWER EXHAUST OR BAROMETRIC DAMPER, ROOF CURBS, & VIBRATION RAILS  
OUTDOOR DESIGN - 95 DEG.F. DB / 72 DEG.F. WB  
AIR ENTERING COIL - 80 DEG.F. DB / 67 DEG.F. WB  
COOLING CAPACITIES SHOWN IN MBH.

GAS-FIRED UNIT HEATER SCHEDULE										
TAG	MFG. NO.	TYPE	CFM	HP	MBH INPUT	MBH OUTPUT	ΔT °F	V/HZ/PH	LOCATION	REMARKS
UH-1	GTNE03ATA	TUBULAR HEAT EXCHANGER	370	1/20	30	24.9	60	115/60/1	BOOKMOBILE PARKING 117	①

- ① PROVIDE CONCENTRIC VENT/COMBUSTION AIR TERMINATION KIT, BELT GUARD, CONDENSATE pH NEUTRALIZING KIT.
- ② PROVIDE CONCENTRIC VENT/COMBUSTION AIR TERMINATION KIT, BELT GUARD.
- ③ PROVIDE UNITS WITH 2 STAGE HEAT.

FAN SCHEDULE									
TAG	MFG. NO.	CFM	S.P.	HP/WATTS	RPM	V/HZ/PH	AREA SERVED	FAN LOCATION	REMARKS
EF-1	DX1GV	1,050	0.25	1/6	956	115/1/60	BOOKMOBILE PARKING	ROOF	① ② ③
EF-2	DX13R	839	0.36	1/6	1,549	115/1/60	WORKSHOP	ROOF	① ② ③
EF-3	DX11R	260	0.36	1/7	1,179	115/1/60	QUARANTINE	ROOF	① ② ③
EF-4	Z5H	120	0.25	79W	1,550	115/1/60	KITCHENETTE	CEILING	① ② ④

- BASED ON: PENNBARRY
- ① BACKDRAFT DAMPER
  - ② SPEED CONTROL
  - ③ NEMA 1 DISCONNECT
  - ④ WALL DISCHARGE CAP

**LOUVER SCHEDULE**

TAG	MFG. NO.	SIZE	CFM	FPM	REMARKS
L-1	ELC6375DAX	24"x36"	1,050	500	① ② ③ ④

- BASED ON: RUSKIN
- ① MILL FINISH
  - ② DRAINABLE BLADES
  - ③ BIRD SCREEN
  - ④ MOD

**VARIABLE AIR VOLUME (VAV) BOX SCHEDULE**

TAG	MFG. NO.	SIZE (IN)	CFM	REMARKS
BD1-1	VADB16	16	2,400	
CD1-1	VADB12	12	775	
CD1-2	VADB16	16	1,500	
CD1-3	VADBO6	6	125	
CD1-4	VADB10	10	450	
BD5-1	VADB16	16	2,400	
CD5-1	VADB12	12	800	
CD5-2	VADB10	10	450	
CD5-3	VADB16	16	1,570	

BASED ON: TRANE

**DIFFUSER, GRILLE & REGISTER SCHEDULE**

TAG	MFG. NO.	SIZE	CFM	NC	PD	THROW	CONN.	REMARKS
A	TMS-3	6" DIA.	0-100	<20	0.04	3-8	6" DIA.	
B	TMS-3	8" DIA.	101-180	<20	0.04	4-11	8" DIA.	
C	TMS-3	10" DIA.	181-320	<21	0.09	7-15	10" DIA.	
D	TMS-3	12" DIA.	321-550	<26	0.16	9-21	12" DIA.	
E	350FL	22"x22"	0-1884	<24	0.13	~	22"x22"	
F	350FL	12"x12"	0-616	<25	0.13	~	12"x12"	
G	350FL	14"x14"	0-854	<27	0.13	~	14"x14"	
H	DL-SV	20"x12"	0-800	<20	0.08	31-53	20"x12"	

BASED ON: TITUS

**HUMIDIFIER SCHEDULE**

TAG	MFG. NO.	FUEL	INPUT KW	RATED CAP #/HR.	ELECTRICAL		REMARKS
					V/HZ/PH	FLA	
H-1	CRUV-4	ELECTRICITY	4.0	11.02	208/60/3	16.7	
H-2	CRUV-6	ELECTRICITY	6.0	15.06	208/60/3	25.0	
H-3	CRUV-8	ELECTRICITY	8.0	23.96	208/60/3	33.3	
H-4	CRUV-16	ELECTRICITY	16	46.94	480/60/3	19.2	

BASED ON: DRI-STEEM

GENERAL NOTES:

REV.	DESCRIPTION	DATE
1	CHANGED VOLTAGE ON H-4	3/11/14
ISSUED FOR CONSTRUCTION		

PROJECT:

**MAINE HISTORICAL SOCIETY**  
PORTLAND, MAINE

SHEET TITLE:

SCHEDULES

DATE: 2-28-2014 PROJECT# 13431  
DRAWN: BSJ CHECKED: FAM SCALE: 1/8"=1'-0"

SHEET #

**M-3**