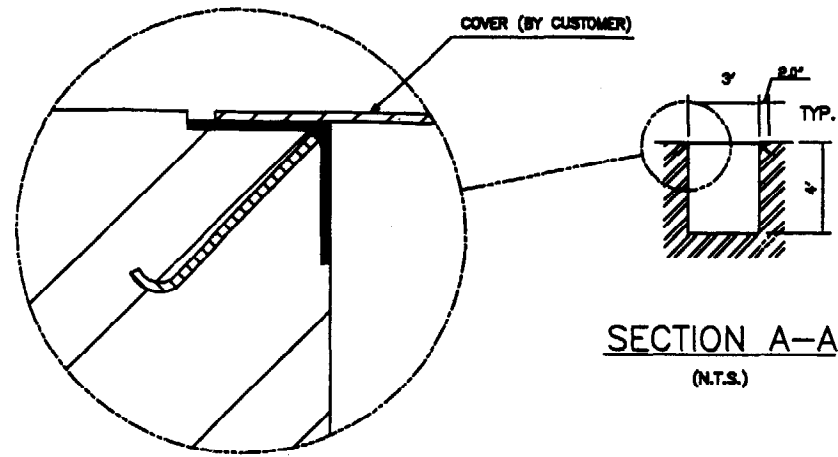


REV	DESCRIPTION	DATE	BY	CHK' D

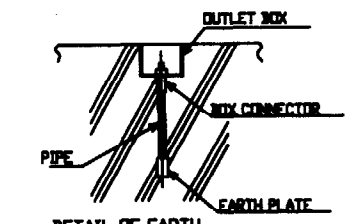
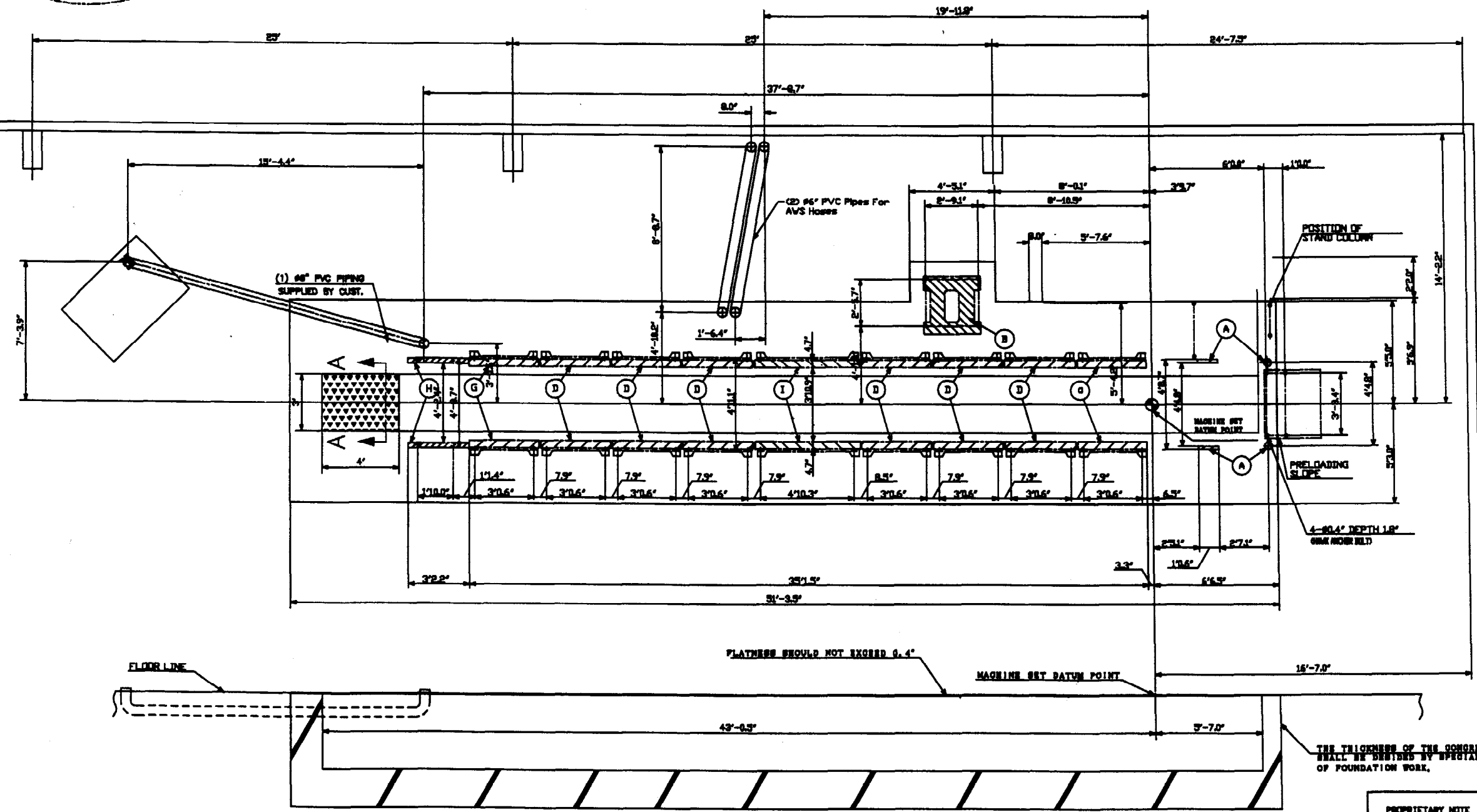
FOUNDATION WORK AND WIRING WORK WHICH ARE MENTIONED IN THIS DRAWING SHOULD BE CARRIED OUT BY CUSTOMER.

FOUNDATION WORK

1. THE THICKNESS OF THE CONCRETE SHOULD BE ENOUGH TO BEAR THE MACHINE WEIGHT LISTED IN TABLE 1.
2. MACHINE TOTAL WEIGHT IS 127400LB.
3. THE MACHINE WEIGHTS ARE LOADED ON THE HATCHING SECTIONS WHICH ARE SHOWN IN THIS DRAWING.



SECTION A-A
(N.T.S.)



DETAIL OF EARTH
THE MACHINE EARTH SHALL BE GROUNDED AN ELECTRIC VILL SEPARATE ANOTHER MACHINE TO PREVENT OPERATION ELECTRICAL ERROR.

TABLE 1

MARK	WEIGHT(LB)	NOTE
A	2400	FEEDER
B	2000	MOTOR
C	12400	UNIT (1 ST COLOR)
D	12600	UNIT (RESIDE 1 ST)
G	12600	UNIT (COATER)
H	5800	DELIVERY
I	16600	UNIT FOR REVERSING PAPER

THE THICKNESS OF THE CONCRETE SHALL BE DETERMINED BY SPECIALIST OF FOUNDATION WORK.

PROPRIETARY NOTE
This drawing contains information proprietary to MITSUBISHI LITHOGRAPHIC PRESSERS, INC. and is to be used only for the specific purpose of engineering the equipment shown. No other information shall be disclosed or reproduced in any manner without the written consent of MITSUBISHI LITHOGRAPHIC PRESSERS, INC.

DATE: 8.28.03
SCALE: N/A
SHEET: 2 OF 2

MITSUBISHI LITHOGRAPHIC PRESSERS
D300QR-8-C-DIS
FOUNDATION INTERFACE DRAWING
SPECTRUM PRINTING & GRAPHICS

