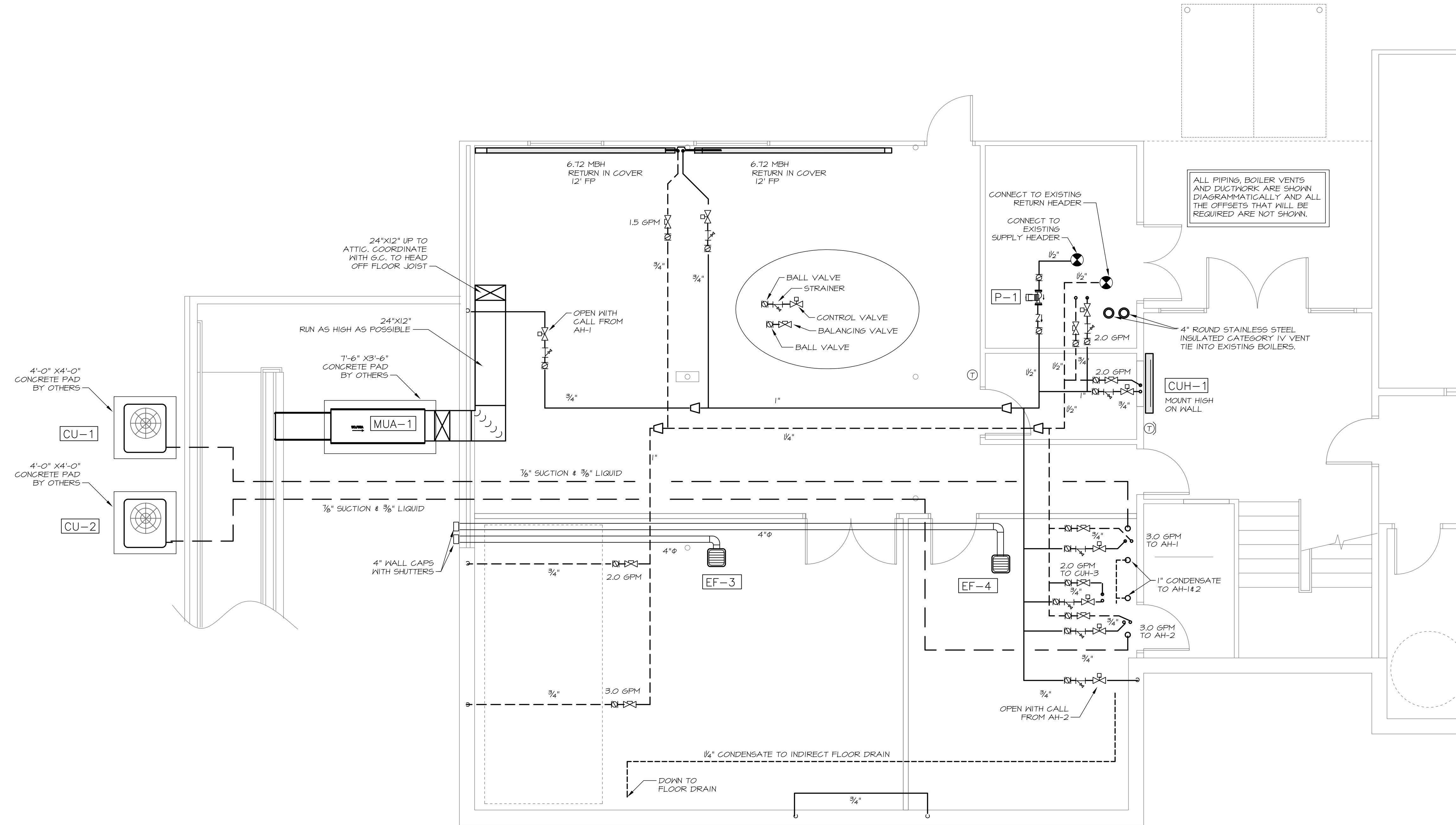




Winton Scott Architects
 5 Milk Street
 Portland, Maine 04101
 207 774 4811
 www.wintonsscott.com

Architecture / Planning
 Preservation Architecture
 Interior Architecture

REVIEW ONLY
 NOT FOR
 CONSTRUCTION



1 LOWER LEVEL MECHANICAL PLAN
 SCALE: 1/4" = 1'-0"

XXXXX

Riverside
 Clubhouse
 Renovations

Portland, Maine

Progress Print
 November 01, 2013

Mechanical
 Ductwork & Piping
 Plans

Scale: 1/4" = 1'-0"

MECHANICAL SYSTEMS ENGINEERS
 ROYAL RIVER CENTER, UNIT #10
 10 FOREST FALLS DRIVE
 YARMOUTH, MAINE 04096
 FACEBOOK: MECHANICAL SYSTEMS ENGINEERS
 207-846-1441
 M.S.E. Proj. 1334
 © COPYRIGHT 2013

M1