

EXHAUST FAN INFORMATION - Job#1943809

FAN UNIT NO.	TAG	FAN UNIT MODEL #	CFM	ESP.	RPM	H.P.	φ	VOLT	FLA	WEIGHT (LBS.)	SONES
1		NCA16FA	3000	1.000	1070	1.500	1	230	10.2	205	12.5
3	Dishwasher	DU30HFA	600	0.350	1119	0.250	1	115	4.0	98	6.7

MUA FAN INFORMATION - Job#1943809

FAN UNIT NO.	TAG	FAN UNIT MODEL #	BLOWER	HOUSING	CFM	ESP.	RPM	H.P.	φ	VOLT	FLA	WEIGHT (LBS.)	SONES
2		A1-D.250-G10	G10	A1-D.250	2700	0.400	1241	2.000	1	230	12.5	711	24

GAS FIRED MAKE-UP AIR UNIT(S)

FAN UNIT NO.	TAG	ACTUAL AIR DENSITY?	INPUT BTUs	OUTPUT BTUs	TEMP. RISE	REQUIRED INPUT GAS PRESSURE	GAS TYPE
2		YES	260433	239598	85 deg F	7 in. w.c. - 14 in. w.c.	Natural

FAN OPTIONS

FAN UNIT NO.	TAG	OPTION (Qty. - Descr.)
1		1 - Grease Box
		1 - Full Crating For Exhaust Fans
		1 - Fan Base Ceramic Seal - For Grease Ducts
		1 - Extra Set of Belts
		1 - 3 Year Extended Motor Warranty
2		1 - Motorized Backdraft Damper for A1-D Housing
		1 - AC Interlock Relay - 24VAC Coil
		1 - Low Fire Start
		1 - Inlet Pressure Gauge, 0-35"
		1 - Manifold Pressure Gauge, -5 to 15" wc
		1 - Full Crating For Commercial Heater
		1 - Extra Set of Belts
		1 - 3 Year Extended Motor Warranty
3	Dishwasher	1 - 1 15-BDD Damper
		1 - SCR-11 Bird Screen
		1 - Full Crating For Exhaust Fans
		1 - 3 Year Extended Motor Warranty

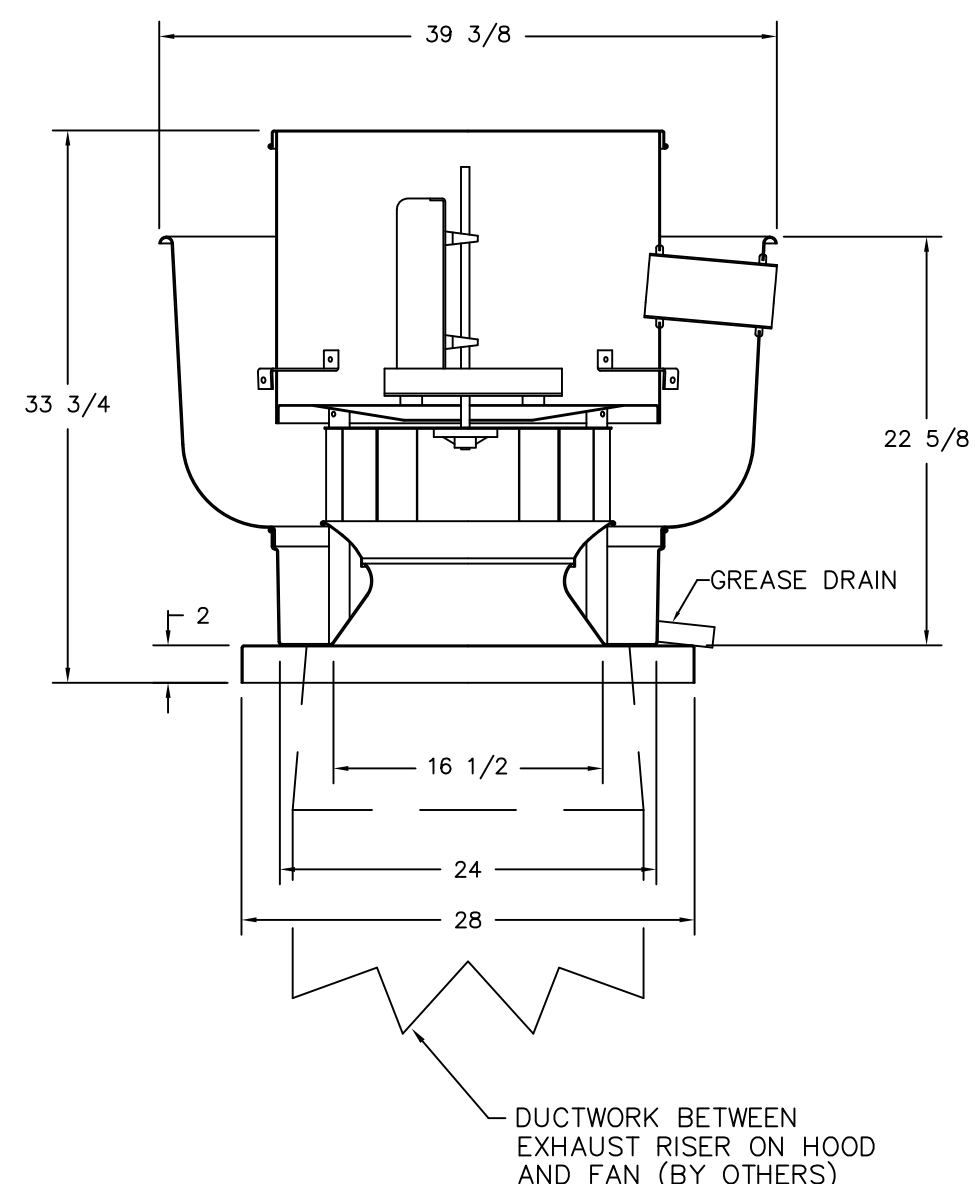
FAN ACCESSORIES

FAN UNIT NO.	TAG	EXHAUST				SUPPLY			
		GREASE CUP	GRAVITY DAMPER	WALL MOUNT	SIDE DISCHARGE	GRAVITY DAMPER	MOTORIZED DAMPER	WALL MOUNT	
1		YES							
2						YES			
3	Dishwasher								

CURB ASSEMBLIES

NO.	ON FAN	WEIGHT	ITEM	SIZE
1	# 1	41 LBS	Curb	26.500"W x 26.500"L x 20.000"H 3.000:12.000 Pitch Vented Hinged
2	# 2	63 LBS	Curb	21.000"W x 71.000"L x 20.000"H 3.000:12.000 Pitch Along Width, Right Insulated
3	# 3	34 LBS	Curb	19.500"W x 19.500"L x 22.000"H 3.000:12.000 Pitch Vented Hinged

FAN #1 NCA16FA - EXHAUST FAN



FEATURES:

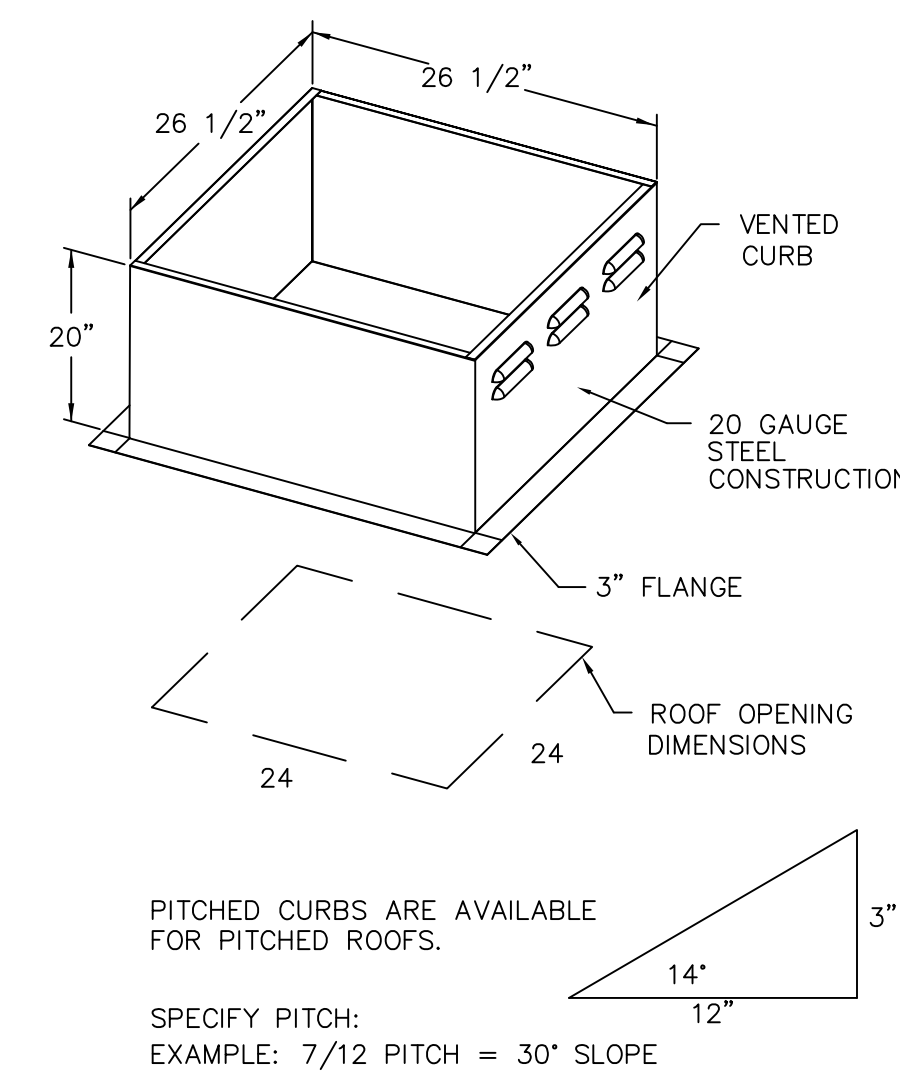
- ROOF MOUNTED FANS
- RESTAURANT MODEL
- UL705 AND UL762
- AMCA SOUND AND AIR CERTIFIED
- WIRING FROM MOTOR TO DISCONNECT SWITCH
- WEATHERPROOF DISCONNECT
- HIGH HEAT OPERATION 300°F (149°C)
- GREASE CLASSIFICATION TESTING

NORMAL TEMPERATURE TEST
EXHAUST FAN MUST OPERATE CONTINUOUSLY WHILE EXHAUSTING AIR AT 300°F (149°C) UNTIL ALL FAN PARTS HAVE REACHED THERMAL EQUILIBRIUM, AND WITHOUT ANY DETERIORATING EFFECTS TO THE FAN WHICH WOULD CAUSE UNSAFE OPERATION.

ABNORMAL FLARE-UP TEST
EXHAUST FAN MUST OPERATE CONTINUOUSLY WHILE EXHAUSTING BURNING GREASE VAPORS AT 600°F (316°C) FOR A PERIOD OF 15 MINUTES WITHOUT THE FAN BECOMING DAMAGED TO ANY EXTENT THAT COULD CAUSE AN UNSAFE CONDITION.

OPTIONS

- GREASE BOX
- FULL CRATING FOR EXHAUST FANS
- FAN BASE CERAMIC SEAL - FOR GREASE DUCTS
- EXTRA SET OF BELTS
- 3 YEAR EXTENDED MOTOR WARRANTY

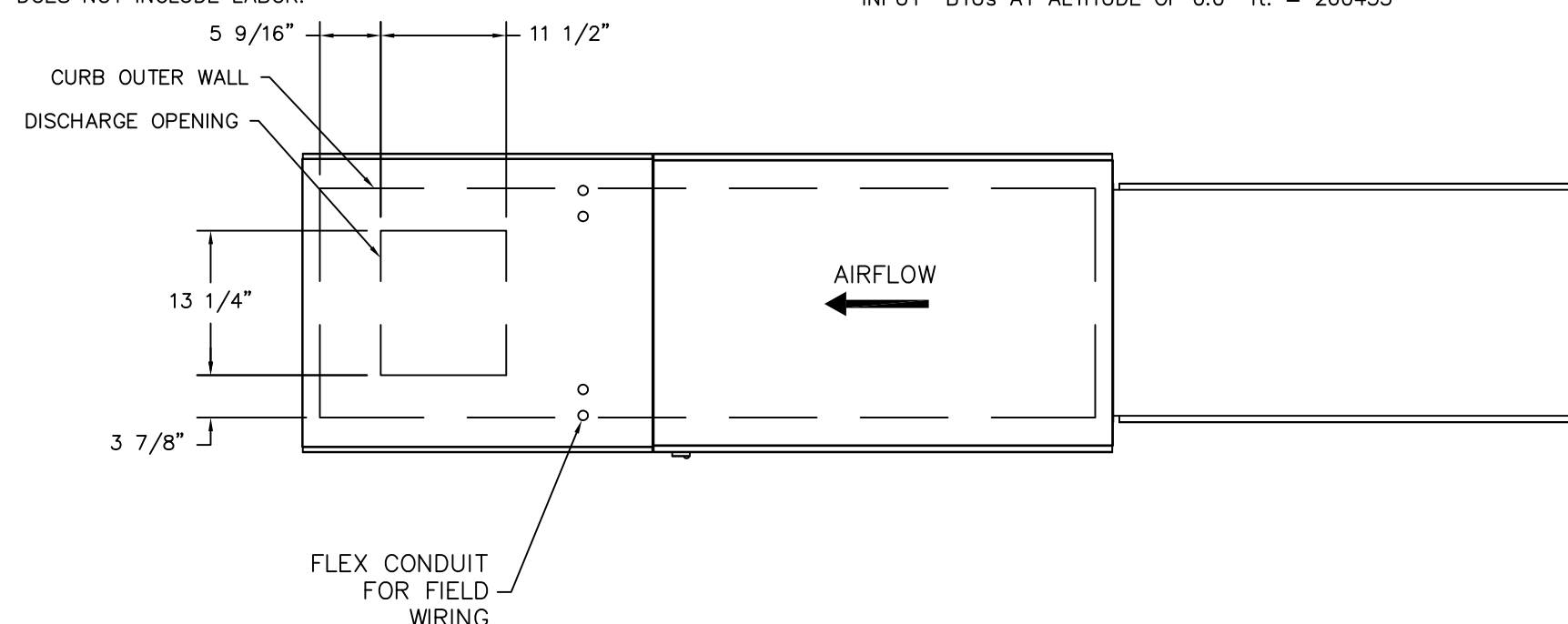


FAN #2 A1-D.250-G10 - HEATER

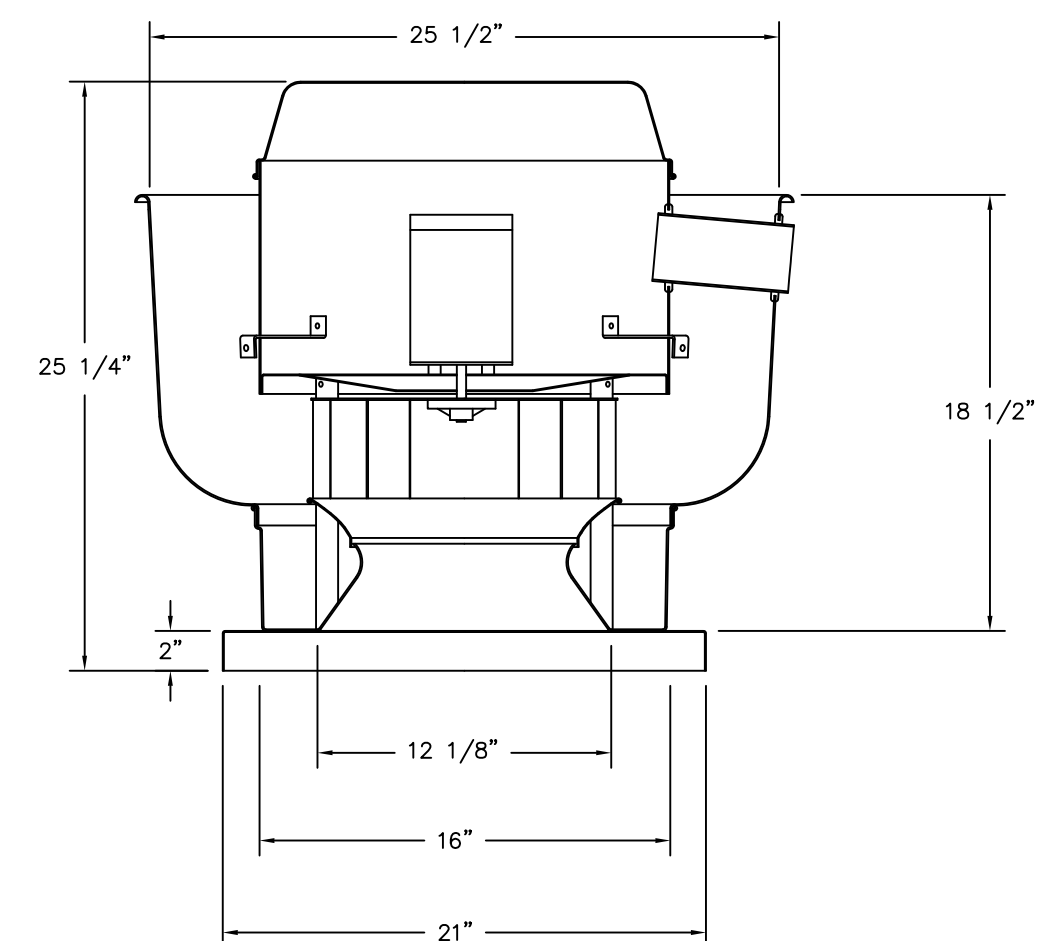
- DIRECT GAS FIRED HEATED MAKE UP AIR UNIT WITH 10" BLOWER
- INTAKE HOOD WITH EZ FILTERS
- DOWN DISCHARGE - AIR FLOW RIGHT -> LEFT
- MOTORIZED BACK DRAFT DAMPER 16" X 18" FOR SIZE 1 STANDARD & MODULAR DIRECT FIRED HEATERS W/EXTENDED SHAFT, STANDARD GALVANIZED CONSTRUCTION, 3/4" REAR FLANGE, LF120S ACTUATOR INCLUDED
- COOLING INTERLOCK RELAY, 24VAC COIL, 120V CONTACTS, LOCKS OUT BURNER CIRCUIT WHEN AC IS ENERGIZED.
- LOW FIRE START, ALLOWS THE BURNER CIRCUIT TO ENERGIZE WHEN THE MODULATION CONTROL IS IN A LOW FIRE POSITION.
- GAS PRESSURE GAUGE, 0-35", 2.5" DIAMETER, 1/4" THREAD SIZE
- GAS PRESSURE GAUGE, -5 TO +15 INCHES WC, 2.5" DIAMETER, 1/4" THREAD SIZE
- FULL CRATING FOR COMMERCIAL HEATERS FOR SHIPPING.
- EXTRA SET OF V-BELTS, ONLY TO BE ORDERED AS FAN OPTION AT TIME FAN IS ORDERED.
- 3 YEAR EXTENDED WARRANTY FOR FAN MOTOR. PARTS ONLY; DOES NOT INCLUDE LABOR.

SUPPLY SIDE HEATER INFORMATION:

WINTER TEMPERATURE = 0°F. TEMP. RISE = 85°F.
BTUs CALCULATED OFF ACTUAL AIR DENSITY
OUTPUT BTUs AT ALTITUDE OF 0.0 ft. = 239598
INPUT BTUs AT ALTITUDE OF 0.0 ft. = 260433



FAN #3 DU30HFA - EXHAUST FAN (DISHWASHER)

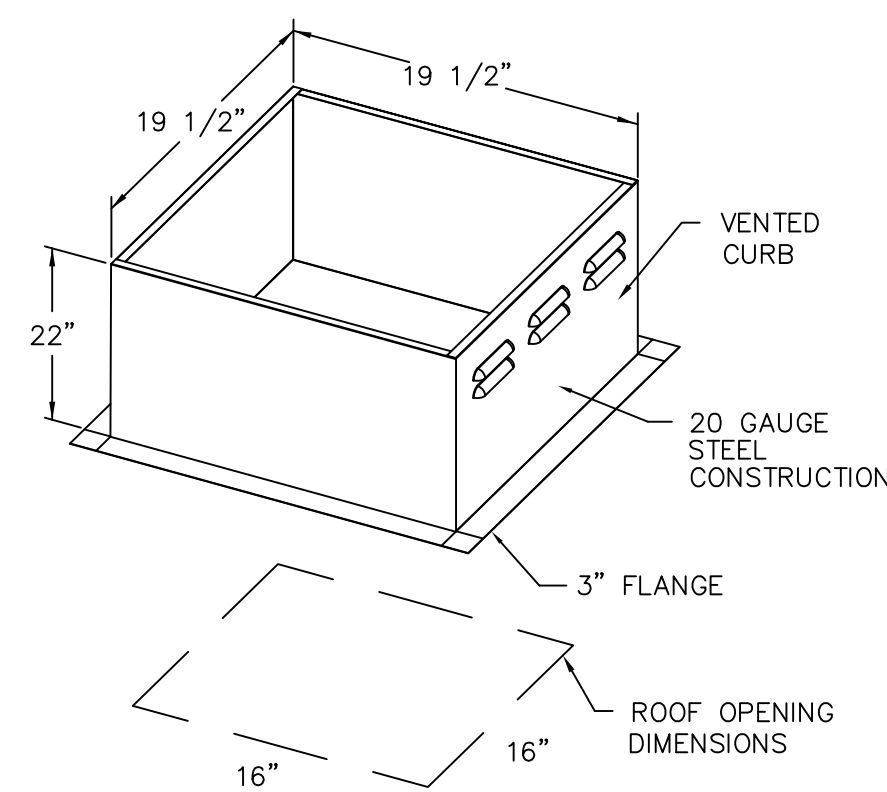


FEATURES:

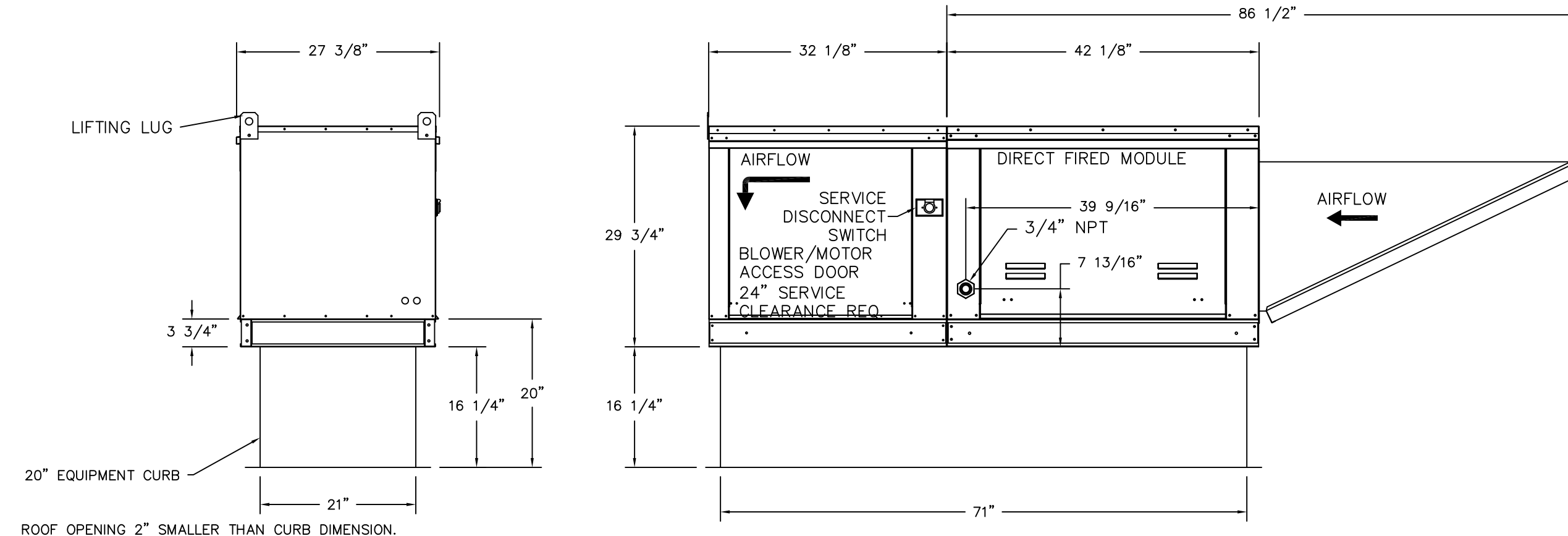
- ROOF MOUNTED FANS
- UL705
- VARIABLE SPEED CONTROL
- INTERNAL WIRING
- WEATHERPROOF DISCONNECT
- THERMAL OVERLOAD PROTECTION (SINGLE PHASE)

OPTIONS

- 1 15-BDD DAMPER
- SCR-11 BIRD SCREEN
- FULL CRATING FOR EXHAUST FANS
- 3 YEAR EXTENDED MOTOR WARRANTY



PITCHED CURBS ARE AVAILABLE FOR PITCHED ROOFS.
SPECIFY PITCH:
EXAMPLE: 7/12 PITCH = 30° SLOPE



REVISIONS

DESCRIPTION	DATE

CAPTIVE

MAINE OFFICE

Riverside Golf Course r1
PORTLAND, ME

DATE: 1/8/2014
DWG.#: 1943809
DRAWN BY: BFC-21
SCALE: 3/4" = 1'-0"
MASTER DRAWING

SHEET NO. 3

PO Box 86, 179 South Rd., Topsham, ME, 04480 PHONE: (207) 796-2590 FAX: (919) 227-5846 EMAIL: reg2@captiveware.com www.captiveware.com