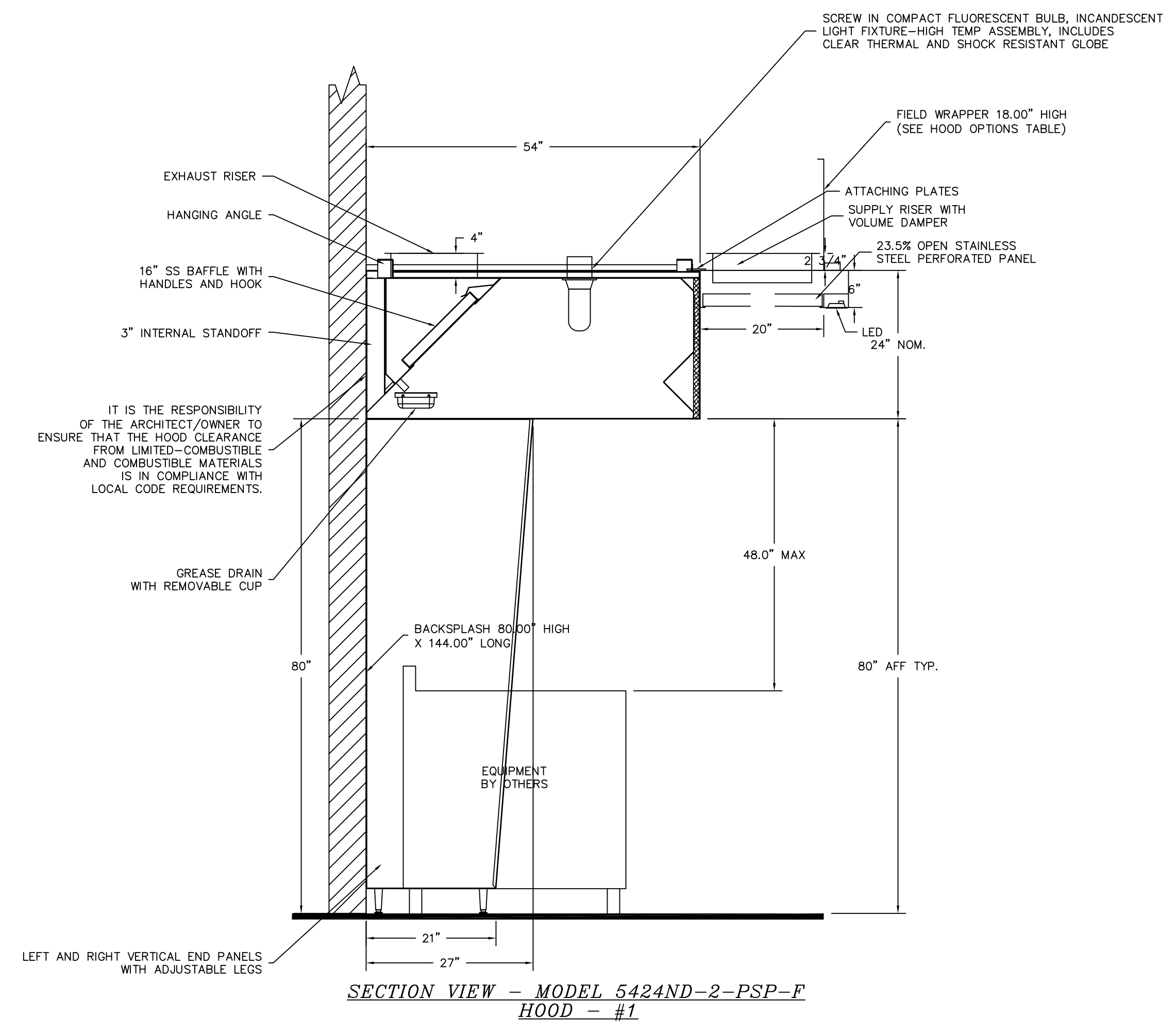
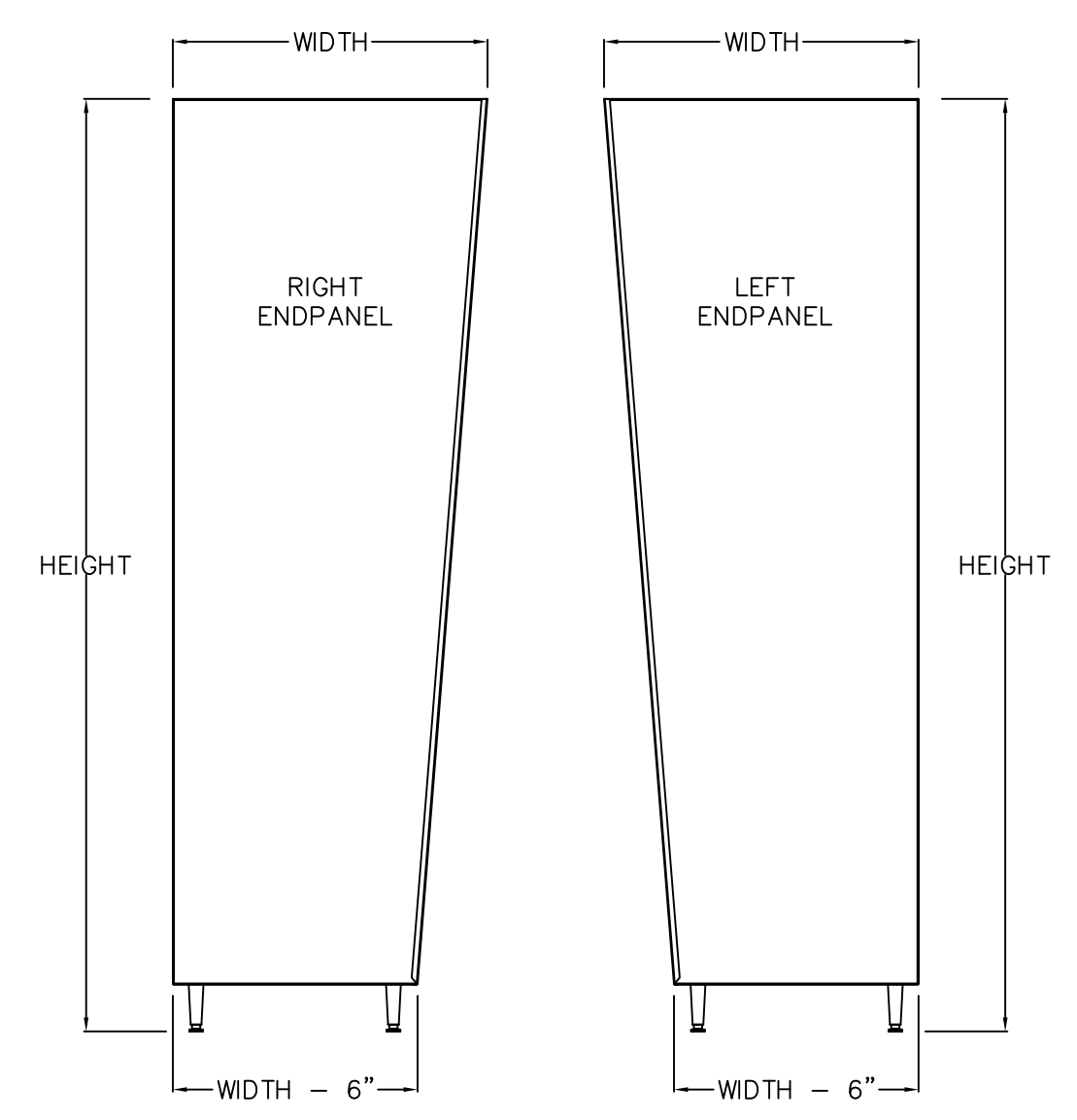
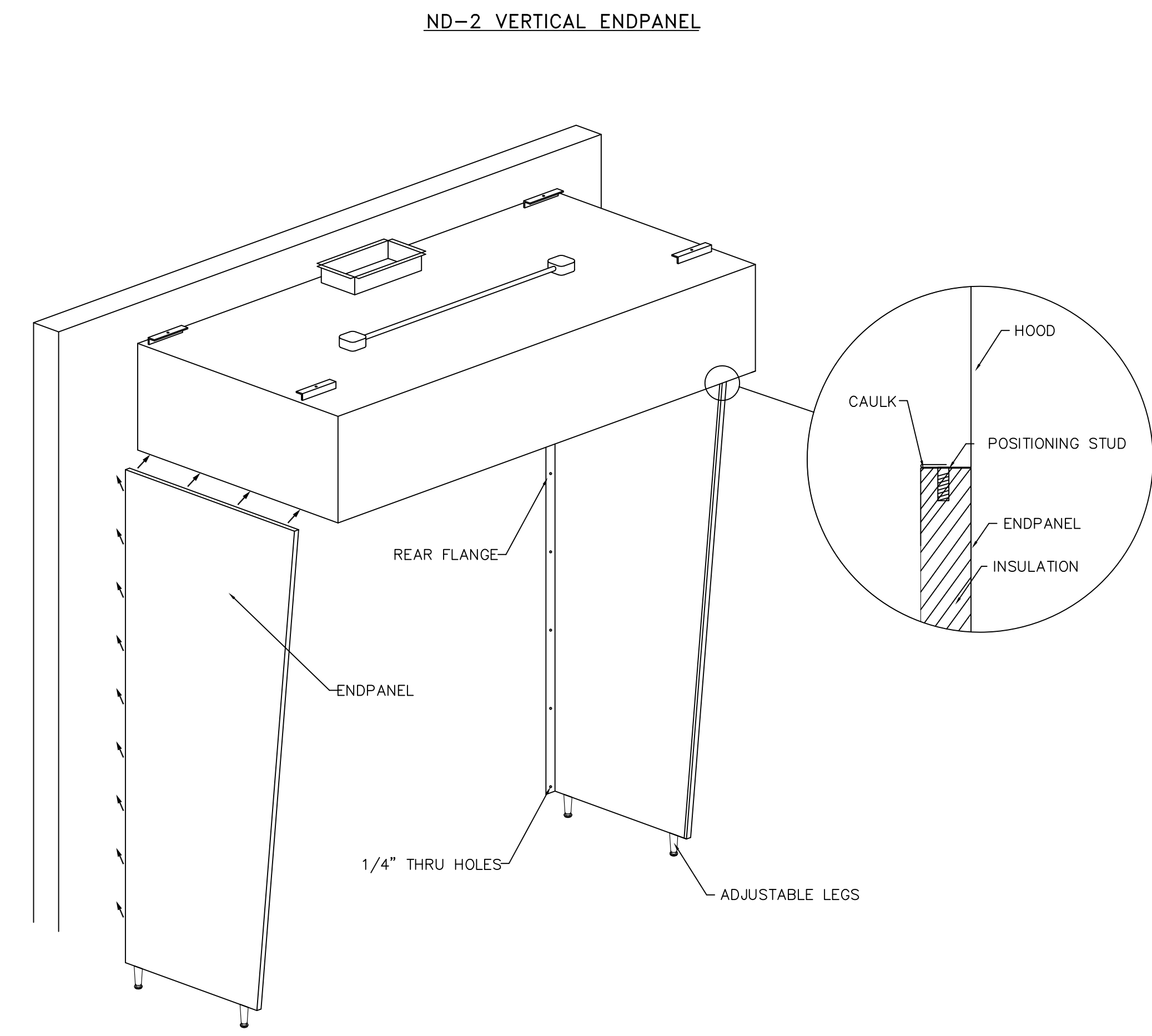


PLAN VIEW - Hood #1
12' 0.00" LONG 5424ND-2-PSP-F
NOTE: Additional hanging angles provided for hoods 12' and longer.

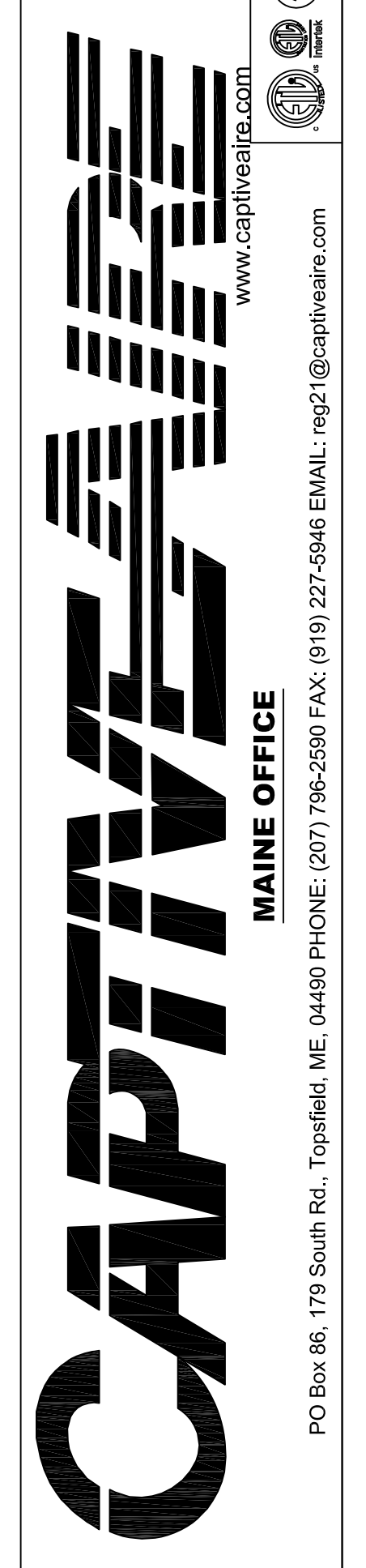
LIGHTING FOR ACPS Job # 1943809 - Hood #1
INPUT: 120V AC, 1 Phase, 50/60Hz, 3.5 Watts per light.
TO CONTROL LIGHTS WITH HOOD LIGHT SWITCH, WIRE PER HOOD ELECTRICAL CONTROL PANEL SCHEMATIC.
TO CONTROL LIGHTS WITH BUILDING LIGHT SWITCH, WIRE BLACK AND WHITE WIRE TO A 120VAC SERVICE.
END TO END ACPS REQUIRE 120VAC FIELD WIRING FROM J-BOX TO J-BOX. REPLACE LIGHTS WITH LED LIGHTS ONLY.



SECTION VIEW - MODEL 5424ND-2-PSP-F
HOOD - #1



REVISIONS	
DESCRIPTION	DATE



Riverside Golf Course r1
PORTLAND, ME

DATE: 1/8/2014
DWG.#: 1943809
DRAWN BY: BFC-21
SCALE: 3/4" = 1'-0"
MASTER DRAWING

SHEET NO. 2