

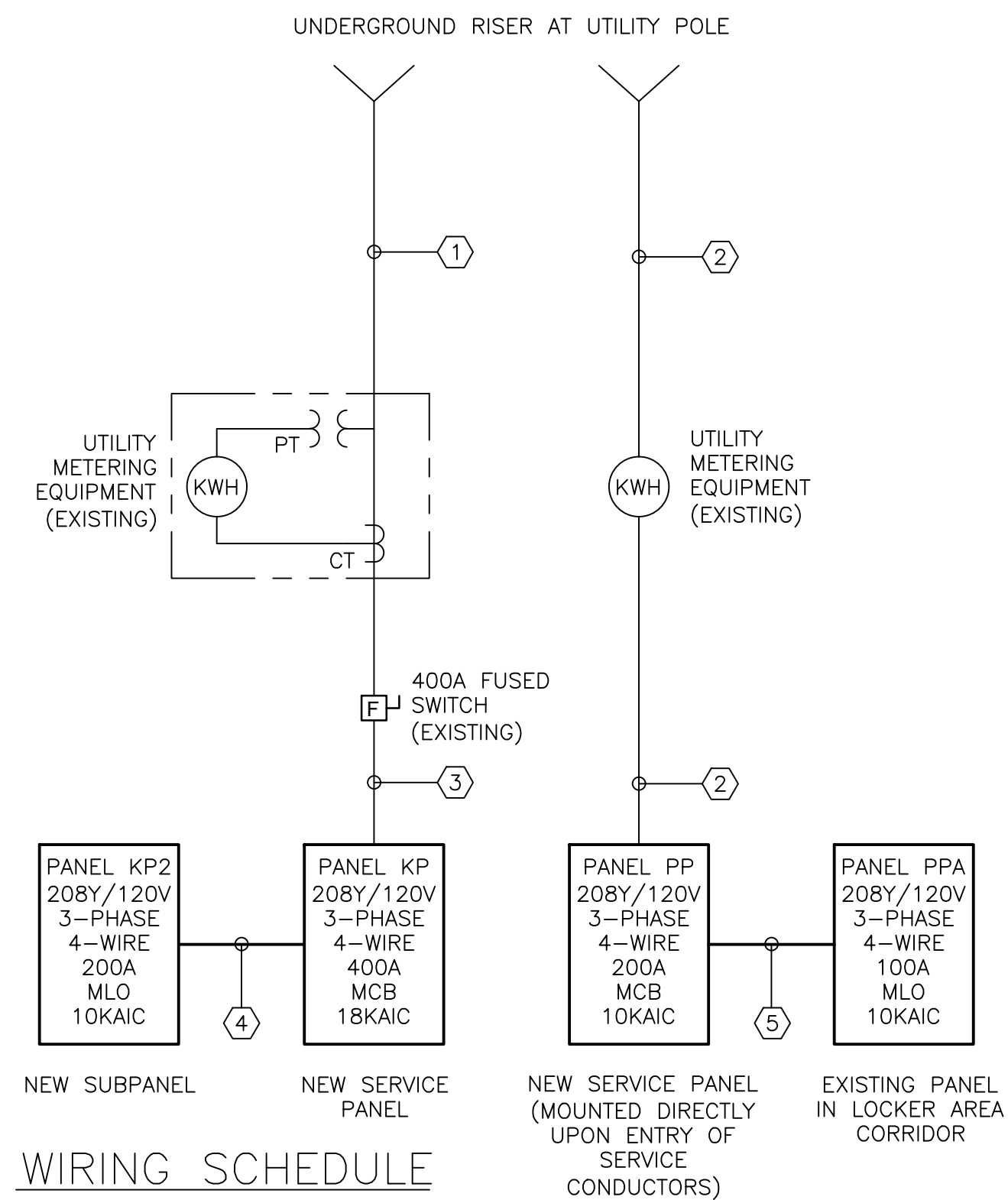
KITCHEN EQUIPMENT SCHEDULE								
EQUIPMENT TAG	QTY.	DESCRIPTION	FLAMPS	KW	HP	VOLTS	PHASE	CONNECTION
3	1	COFFEE BREWER	25.8	6.2	-	240	1	PLUG
5	1	BREWER STATION/DUMP SINK	15.0	1.8	-	120	1	DIRECT
13	1	DISHWASHER, UNDERCOUNTER	16.0	3.3	-	208	1	DIRECT
14	1	BACK BAR COOLER	7.0	0.8	-	120	1	PLUG
20	1	DISHWASHER W/ BOOSTER HEATER	62	22.3	-	208	3	DIRECT
23	1	REFRIGERATOR, 2-SECTION	9.1	1.1	-	120	1	PLUG
25	1	RANGE, 6-BURNER	1.7	0.2	-	120	1	PLUG
28	1	FREEZER, 1-SECTION	7.2	0.9	-	120	1	PLUG
30	1	REFRIGERATED PREP TABLE	8.6	1.0	-	120	1	PLUG
33	1	SLICER	5.4	0.6	-	120	1	PLUG
34	1	FOOD PROCESSOR	7.0	0.8	-	120	1	PLUG
35	1	FREEZER, 2-SECTION	11.0	1.3	-	120	1	PLUG
36	1	ICE MACHINE, W/BIN	11.7	1.4	-	120	1	PLUG
38A	1	BAG-IN-BOX SODA SYSTEM	15.0	1.8	-	120	1	PLUG
38B	1	BAG-IN-BOX SODA SYSTEM	15.0	1.8	-	120	1	PLUG
39	1	HEAT LAMP	6.7	0.8	-	120	1	PLUG
40	1	WALK-IN COOLER	1.5	0.2	-	120	1	DIRECT
41	1	EVAPORATOR COIL, COOLER	5	0.6	-	120	1	DIRECT
42	1	COMPRESSOR, COOLER	5.9	2.1	-	208	3	DIRECT
46	1	RANGE, CHAR-BROILER	8.0	1.0	-	120	1	PLUG
47	1	BOTTLE COOLER	6.3	0.8	-	120	1	PLUG
48	1	P.O.S. SYSTEM	10	1.2	-	120	1	PLUG

KITCHEN EQUIPMENT ELECTRICAL SCHEDULE  
NOT TO SCALE

FOR REVIEW  
NOT FOR CONSTRUCTION

NOTES:

- SEE E000 FOR LEGEND, ABBREVIATIONS AND GENERAL NOTES.
- THE CURRENT BUILDING HAS TWO METERED 120/208V, 3-PHASE SERVICES, THAT ARE INTENDED TO BE REUSED.
  - SERVICE #1 (200A) EXISTING SWITCHGEAR IN THE BUILDING WILL BE REMOVED AND THE EXISTING PANELBOARD WILL BE REPLACED WITH ONE WITH A MAIN SERVICE ENTRANCE BREAKER. THIS NEW PANEL WILL ALSO FEED EXISTING PANEL PPA IN THE CORRIDOR OUTSIDE OF THE LOCKER ROOMS.
  - SERVICE #2 (400A) EXISTING EXTERIOR SERVICE DISCONNECT TO REMAIN. INTERIOR DISCONNECTS TO BE REMOVED. NEW 400A PANEL TO BE INSTALLED IN THE KITCHEN. THIS WILL ALSO FEED NEW SUB PANEL IN KITCHEN STORAGE AREA.



WIRING SCHEDULE

- ① (2)-4#250KCM AL, (1)-3"C
- ② 4#250KCM AL, 2"C
- ③ 4#500KCM CU & #3GND, 4"C
- ④ 4#3/0AWG CU & #6GND, 2"C
- ⑤ 4#2AWG & #6GND, 1-1/2"C

ONE-LINE DIAGRAM  
NOT TO SCALE

Structural Engineering:  
BECKER STRUCTURAL ENGINEERS, INC.

HVAC & plumbing Engineering:  
MECHANICAL SYSTEMS ENGINEERS

Electrical Engineering:  
SWIFTCURRENT ENGINEERING

Food Service Design Consultant:  
TJM CONSULTING

**Riverside  
Golf Course -  
North Course  
Club House  
Design Study**

Riverside Street  
Portland, Maine

REVISIONS

PERMIT  
DOCUMENTS  
January 14, 2013

Kitchen Equipment  
Electrical Schedule &  
One-Line Diagram  
Scale: As Noted