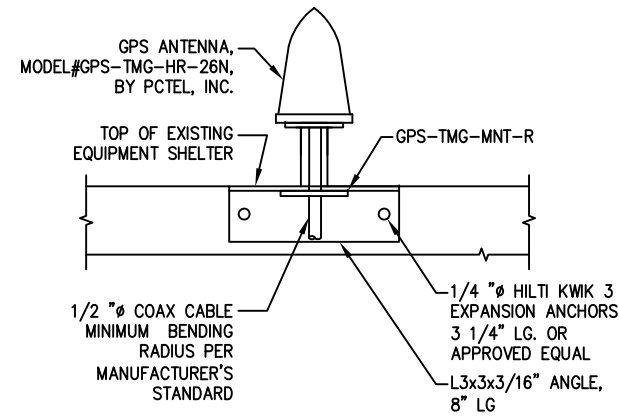


(P) ANTENNA TO PIPE MOUNT
(PER MANUFACTURER'S REQUIREMENTS)

HPA-65R-BUU-H8-K
MANUFACTURER: CCI
DIMENSIONS: (HxWxD)
92.4"x18.5"x7.4"
WEIGHT: 68 LBS.

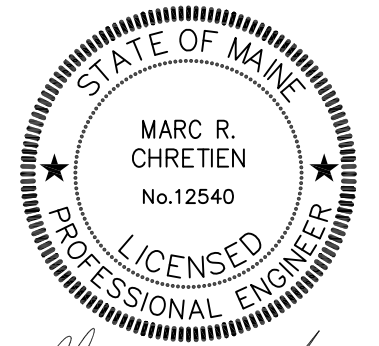
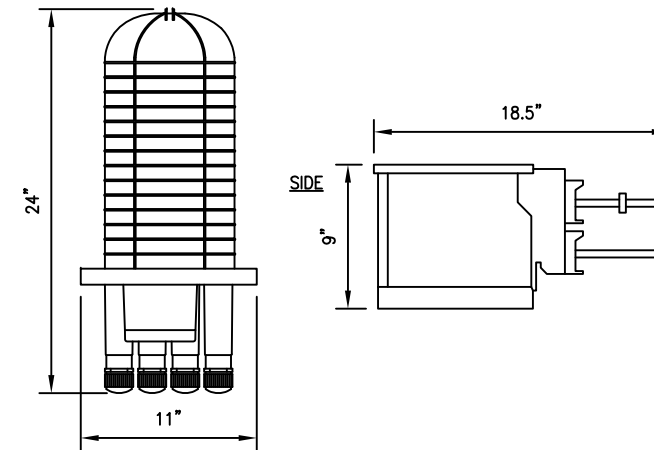
SBNHH-1D65A
MANUFACTURER: ANDREW-COMMScope
DIMENSIONS: (HxWxD)
55"x11.9"x7.1"
WEIGHT: 33.5 LBS.



RAYCAP DC6-48-60-18-8F

NUMBER OF RADIOS PROTECTED:
SUPPRESSION CONNECTION METHOD:
COPPER, #2-#12
ENVIRONMENTAL RATING:
WEIGHT:

6
COMPRESSION LUG, #2-#14 AWG
ALUMINUM
IP 68, 7M 72HRS
32.8 LBS (141.45 N)

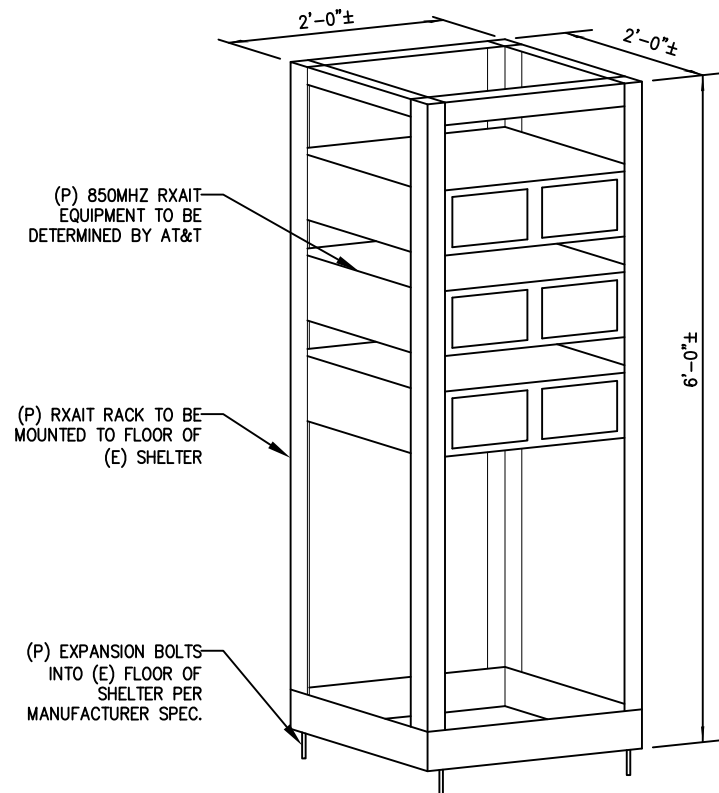


Marc R. Chretien

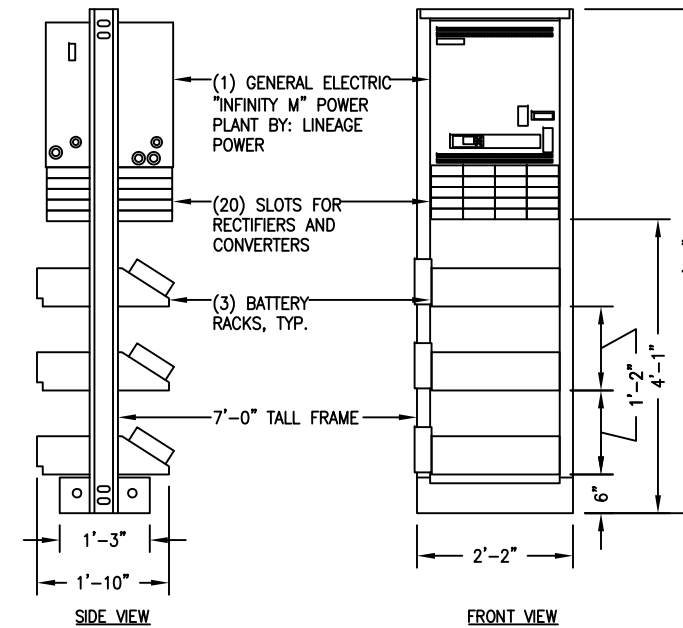
1 ANTENNA DETAILS
A-3 SCALE: N.T.S.

2 GPS ANTENNA MOUNTING DETAIL
A-3 SCALE: N.T.S.

3 SURGE ARRESTOR DETAIL
A-3 SCALE: N.T.S.



4 RXAIT DETAIL
A-3 SCALE: N.T.S.



5 POWER PLANT DETAIL
A-3 SCALE: N.T.S.

NO.	DATE	REVISIONS	BY	CHK	APP'D
1	1/23/14	ISSUED FOR CONSTRUCTION	MER	MRC	MRC
0	12/26/13	UPDATE	MER	MRC	MRC
A	11/27/13	LTE 2C ISSUED FOR REVIEW	MER	MRC	MRC
SCALE: AS SHOWN DESIGNED BY: MRC DRAWN BY: MER					

AT&T		
DETAILS		
JOB NUMBER	DRAWING NUMBER	REV
5015 LTE 2C	A-3	1