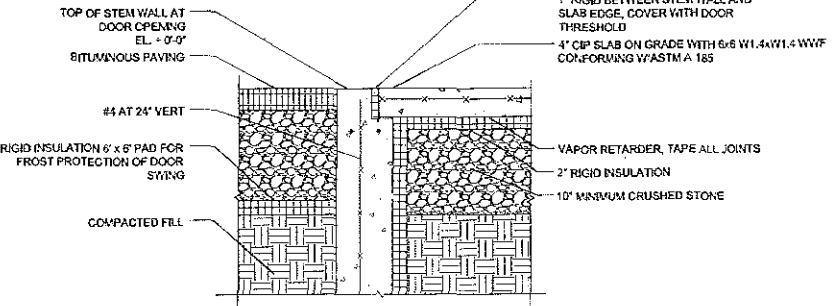
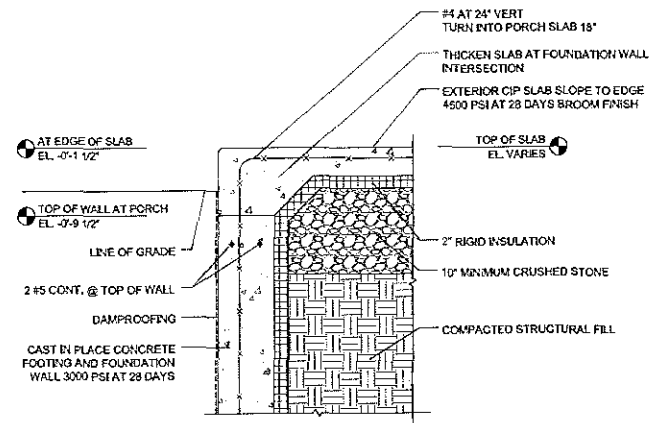


A Wall Section
1/4"=1'-0"

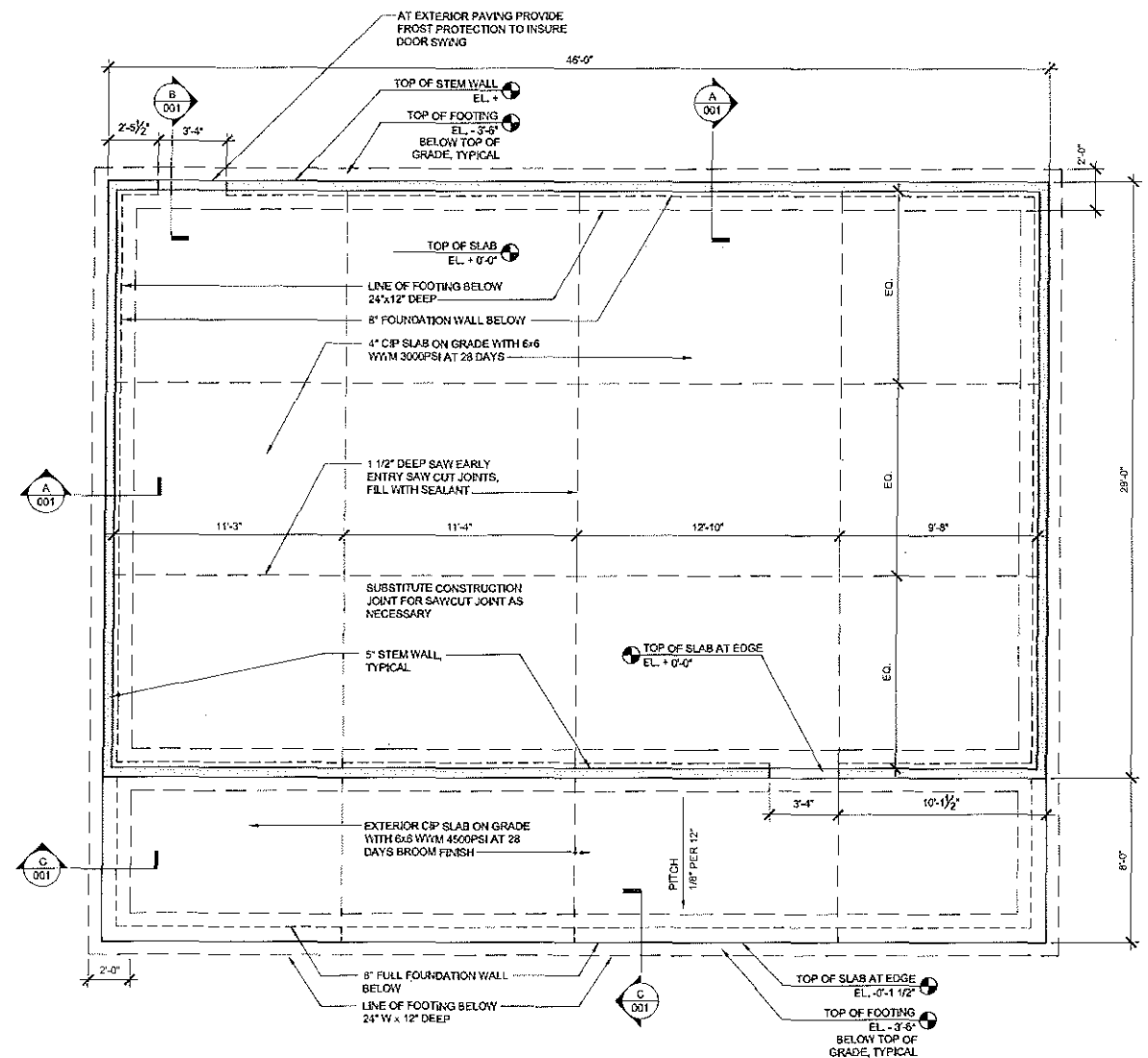


B TOW Detail at Door Threshold
1/4"=1'-0"

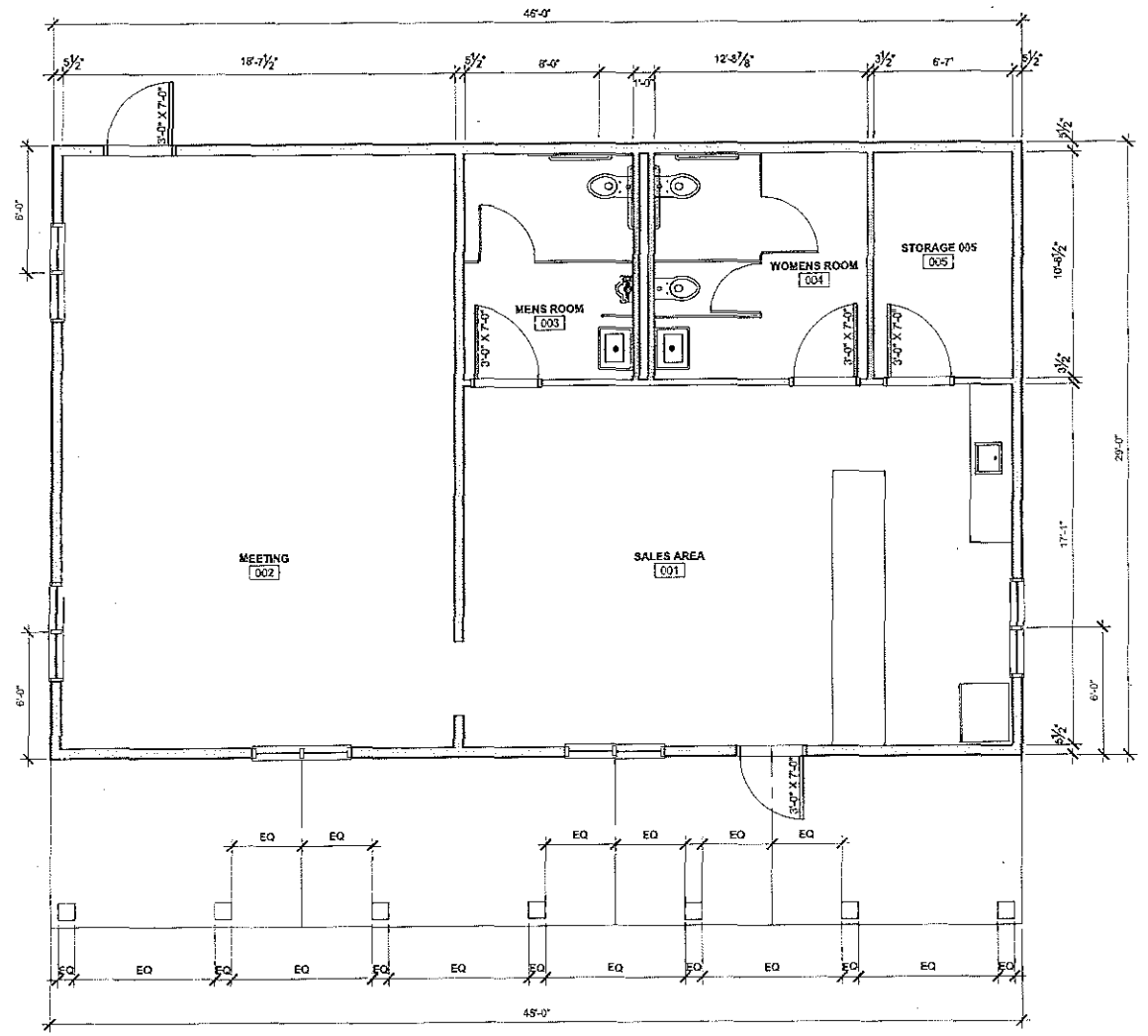


C Porch Edge Detail
1/4"=1'-0"

- GENERAL FOUNDATION NOTES:**
1. ALL FOOTINGS TO BEAR ON UNDISTURBED NATIVE SOIL. ADJUST ELEVATION ACCORDINGLY.
 2. CONCRETE SLAB TO CONFORM TO IBC 2009, SECTION 1905 CONCRETE MIX TO CONFORM TO IBC 2009, SECTION 1905.
 3. COORDINATE PLUMBING, WASTE, DRAINAGE BY OTHERS. PROVIDE ROUGH INS AND BOND OUTS AS NECESSARY.
 4. SEE DETAIL SECTIONS FOR INSULATION, REINFORCING, VAPOR BARRIERS, ANCHOR BOLTS, ETC.



1 Foundation Plan
1/4"=1'-0"



2 Plan
1/4"=1'-0"

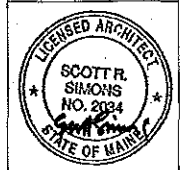
Scott Simons Architects
175 State Street, Suite 401
Portland, Maine 04101
www.scottrsimons.com
207.772.4855



LDD PROJECT NAME: N/A
DRAWING NAME: N/A
FIELD BOOK USED: N/A

REFERENCES:
RiversideSouthGolfCourse001_LDD_105.dwg

DESIGNED BY:	DRAWN BY:	CHECKED BY:	SCALE:	DATE:



RIVERSIDE SOUTH
GOLF COURSE PRO SHOP

CITY OF PORTLAND, MAINE
RECREATION AND FACILITIES
MANAGEMENT DEPARTMENT



SHEET #
001
PLAN NUMBER

FOR FOUNDATION PERMITTING
MARCH 29, 2013