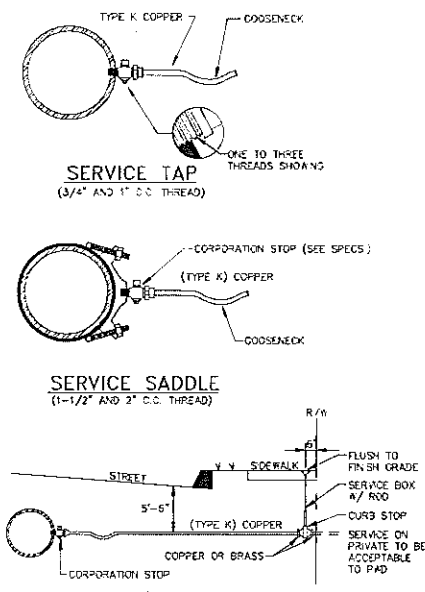


NOTE: ANY EXTENSION OF SERVICE BOX REQUIRES:  
 1) 1" FEMALE IRON PIPE COUPLING  
 2) 1" THREADED PIPE  
 (THIS IS TO BE A NON-WELDED, TWO PIECE ARRANGEMENT. SLP ON ADAPTERS ARE NOT FERM-SIBLE.)

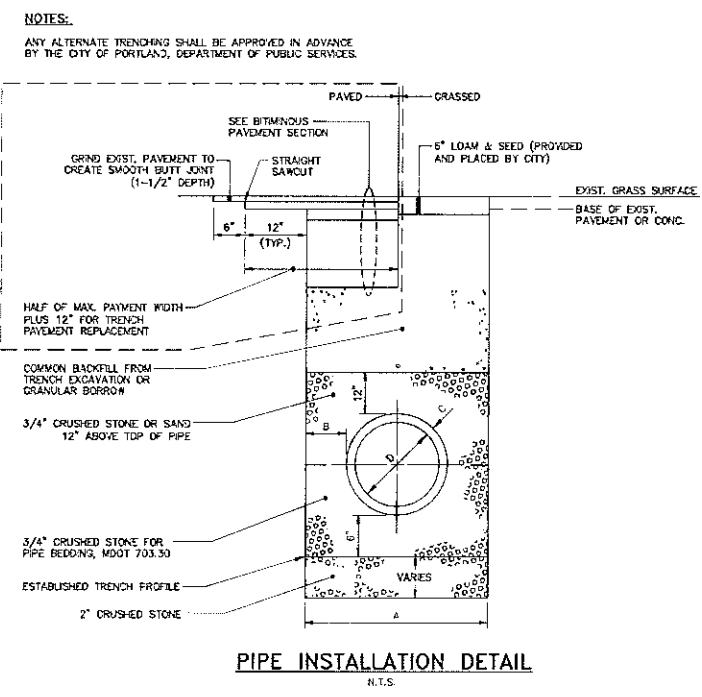


TYPICAL SERVICE CONNECTION  
N.T.S.

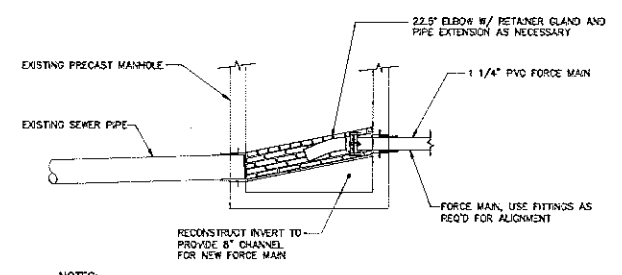
PIPE INSTALLATION DETAIL - NOTES

- ALTERNATIVE CONSTRUCTION METHODS OR PAYMENT METHODS SHALL BE APPROVED IN ADVANCE.
- IN PAVED AREAS, DEPTHS OF GRAVEL AND HOT MIX ASPHALT PAVEMENT SHALL MATCH THE GREATER OF EXISTING CONDITIONS OR THE REQUIREMENTS FOR THE CORRESPONDING STREET CLASSIFICATION.
- DIMENSION "B" SHALL BE SUFFICIENT TO ALLOW CRUSHED STONE BEDDING TO BE PLACED AND COMPACTED UNDER THE HAUNCHES OF THE PIPE; BUT IN ALL CASES "B" SHALL BE AT LEAST 9".
- DIMENSION "A" SHALL BE BASED ON PIPE DIAMETER, AS SET FORTH IN THE FOLLOWING TABLE.

PIPE DIAMETER, "D" (INCHES)	MAX. TRENCH WIDTH, "A" (FEET)
1	2.0
2	4.0
4	4.0
6	4.0
8	4.0
10	4.0
12	4.0
15	4.0
18	5.0
21	5.0
24	5.0
27	6.0
30	6.0
36	7.0
42	8.0
48	8.0

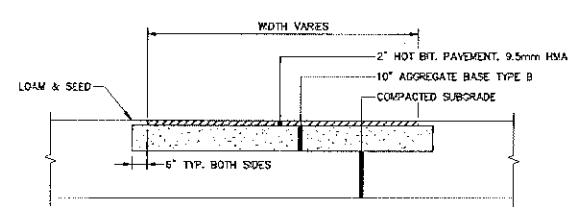


PIPE INSTALLATION DETAIL  
N.T.S.

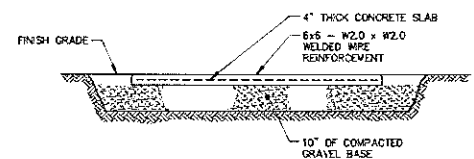
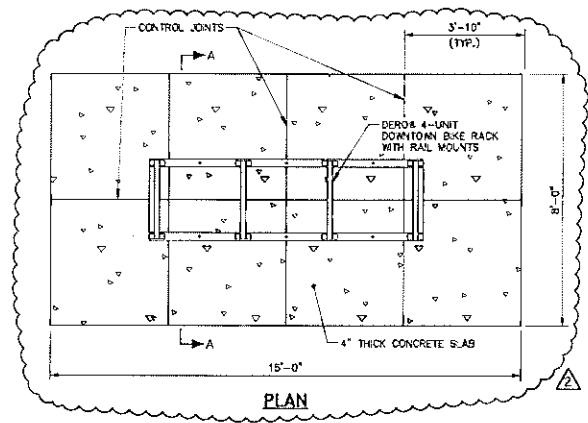


- NOTES:
- THE EXISTING SANITARY SEWER MANHOLE AT THE INTERSECTION OF RIVERSIDE STREET AND EVERGREEN DRIVE SHALL BE COPE DRILLED TO MAKE THE NEW SEWER FORCEMAIN CONNECTION TO THE PUBLIC SEWER SYSTEM.
  - A 22.5 DEGREE BEND SHALL BE PROVIDED INSIDE THE MANHOLE AT THE FORCEMAIN TERMINUS TO DIRECT FLOW FROM THE FORCEMAIN DOWN AND INTO THE EXISTING SEWER LEAVING THE MANHOLE.
  - ALL CONSTRUCTION DETAILS OF THE FORCEMAIN CONNECTION TO THE MANHOLE SHALL BE SUBJECT TO REVIEW AND APPROVAL BY THE CITY OF PORTLAND WASTEWATER DIVISION. CONTACT JOHN EMERSON (318-1234) TO COORDINATE REVIEW AND APPROVAL OF THE PROPOSED CONNECTION DETAILS AND TO ARRANGE FOR INSPECTION OF THIS WORK.

FORCE MAIN DISCHARGE MANHOLE  
N.T.S.



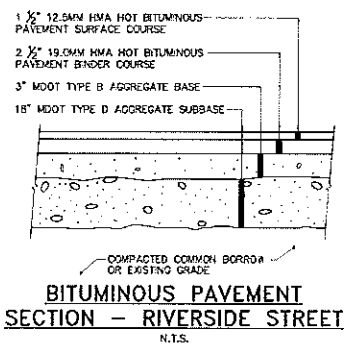
BITUMINOUS SIDEWALK DETAIL  
N.T.S.



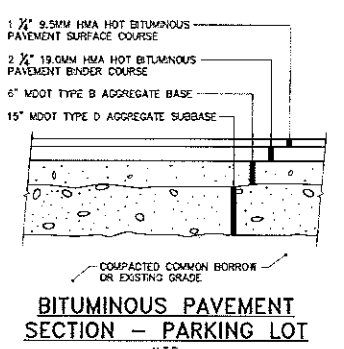
SECTION A-A

- NOTES:
- PROVIDE A DERO 4-UNIT DOWNTOWN BIKE RACK WITH RAIL MOUNTS. BIKE RACKS AND RAILS SHALL BE HOT-DIP GALVANIZED.
  - CONCRETE SLAB SHALL BE 4 INCHES THICK (MIN.) PLACED ON A 10 INCH THICK COMPACTED GRAVEL BASE. USE 4,500 PSI (MIN.) CONCRETE MIX. USE EDGING TOOL TO RADIUS EDGES AND SCORE JOINTS AS SHOWN. FINISH CONCRETE WITH A LIGHTLY BROOMED SURFACE.
  - DRILL CONCRETE SLAB AND ATTACH BIKE RACK RAILS WITH 3/8"x4" GALV. WEDGE ANCHOR BOLTS PER MANUFACTURER'S INSTRUCTIONS.

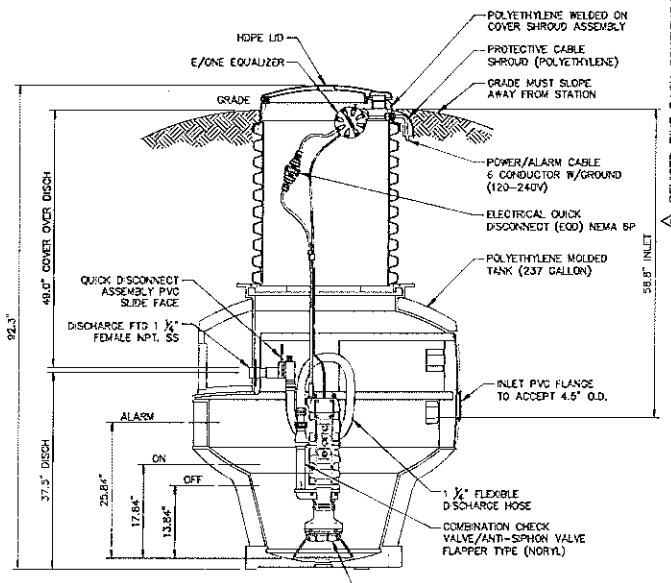
DERO 3-UNIT DOWNTOWN BIKE RACK AND CONCRETE PAD DETAIL  
N.T.S.



BITUMINOUS PAVEMENT SECTION - RIVERSIDE STREET  
N.T.S.



BITUMINOUS PAVEMENT SECTION - PARKING LOT  
N.T.S.



- NOTES:
- PUMP SHALL BE MODEL W4231-92 BY E/ONE SEWER SYSTEMS OR APPROVED EQUAL.
  - GRADE SHALL BE SLOPED AWAY FROM PUMP STATION LID.
  - CONTRACTOR SHALL PROVIDE CONCRETE ANTI-FLOATATION DEVICE AS NECESSARY. ANTI-FLOATATION DESIGN SHALL BE COMPLETED AS RECOMMENDED BY MANUFACTURER AND SHALL BE STAMPED BY A PROFESSIONAL ENGINEER.

SEWER PUMP DETAIL  
N.T.S.

41 HUTCHINS DRIVE  
 PORTLAND, MAINE 04102  
 800.426.4262 | www.woodardcurran.com

WOODARD & CURRAN  
 COMMITMENT & INTEGRITY DRIVE RESULTS

LDD PROJECT NAME: N/A  
 DRAWING NAME: 222804.77 C200A.DWG  
 FIELD BOOK USED: N/A

REFERENCES:  
 (www.woodardcurran.com)

DESIGNED BY: D.L.G.  
 DRAWN BY: J.B.C.  
 CHECKED BY: J.P.P.  
 SCALE: AS NOTED  
 DATE: 3/15/2013



RIVERSIDE SOUTH  
 GOLF COURSE PRO SHOP

CITY OF PORTLAND, MAINE  
 RECREATION AND FACILITIES  
 MANAGEMENT DEPARTMENT



SHEET # C003  
 PLAN NUMBER

V:\PORTLAND\Projects\222804\_Parkland-Corridor\222804.77 RIVERSIDE SOUTH CO. Proj\Shop Drawings\222804.77 C200A.dwg, Apr 03, 2013, 11:23am