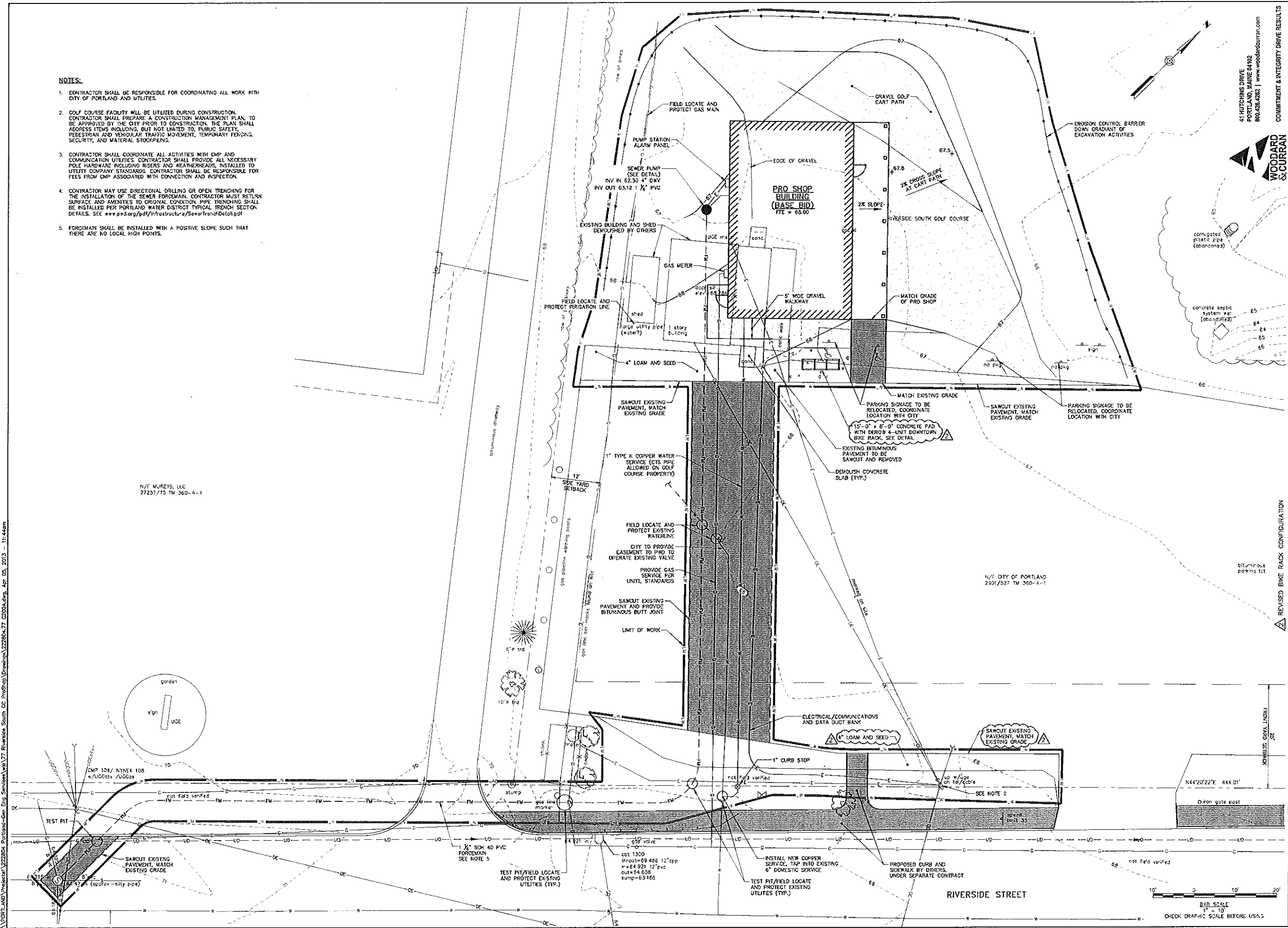


4/5/13

**NOTES:**

- CONTRACTOR SHALL BE RESPONSIBLE FOR COORDINATING ALL WORK WITH CITY OF PORTLAND AND UTILITIES.
- GOLF COURSE FACILITY WILL BE UTILIZED DURING CONSTRUCTION. CONTRACTOR SHALL PREPARE A CONSTRUCTION MANAGEMENT PLAN, TO BE APPROVED BY THE CITY PRIOR TO CONSTRUCTION. THE PLAN SHALL ADDRESS ITEMS INCLUDING, BUT NOT LIMITED TO, PUBLIC SAFETY, PEDESTRIAN AND VEHICULAR TRAFFIC MOVEMENT, TEMPORARY FENCING, SECURITY, AND MATERIAL STOCKPILING.
- CONTRACTOR SHALL COORDINATE ALL ACTIVITIES WITH CMP AND COMMUNICATION UTILITIES. CONTRACTOR SHALL PROVIDE ALL NECESSARY GOLF HARDWARE INCLUDING RISERS AND WEATHERHEADS, INSTALLED TO UTILITY COMPANY STANDARDS. CONTRACTOR SHALL BE RESPONSIBLE FOR FEES FROM CMP ASSOCIATED WITH CONNECTION AND INSPECTION.
- CONTRACTOR MAY USE DIRECTIONAL DRILLING OR OPEN TRENCHING FOR THE INSTALLATION OF THE SEWER FOREMAN. CONTRACTOR MUST RETURN SURFACE AND AMENITIES TO ORIGINAL CONDITION. PIPE TRENCHING SHALL BE INSTALLED PER PORTLAND WATER DISTRICT TYPICAL TRENCH SECTION DETAILS. SEE [www.pd.org/pdf/infrastructure/SewerTrenchDetail.pdf](http://www.pd.org/pdf/infrastructure/SewerTrenchDetail.pdf)
- FOREMAN SHALL BE INSTALLED WITH A POSITIVE SLOPE SUCH THAT THERE ARE NO LOCAL HIGH POINTS.

N/T MURETS, LLC  
27257/75 TM 350-A-4



47 HUTCHINS DRIVE  
PORTLAND, MAINE 04102  
800.626.6282 | www.woodardcurran.com



COMMITMENT & INTEGRITY DRIVE RESULTS

LOD PROJECT NAME: N/A  
DRAWING NAME: 222804-77 C200A.DWG  
FIELD BOOK USED: N/A

**REFERENCES:**

DESIGNED BY:	DDC
DRAWN BY:	BC
CHECKED BY:	PP
SCALE:	1" = 10'
DATE:	3/19/2013



REVISED BIKE RACK CONFIGURATION

RIVERSIDE SOUTH GOLF COURSE PRO SHOP  
SITE PLAN

CITY OF PORTLAND, MAINE  
RECREATION AND FACILITIES  
MANAGEMENT DEPARTMENT



SHEET # C002  
PLAN NUMBER

I:\PORTLAND\Portland-Cor\_Eng\_Servant\222804-77 Riverside South\_Cor\_ProShop\Drawings\222804-77\_C200A.dwg, Apr 03, 2013 - 11:44am