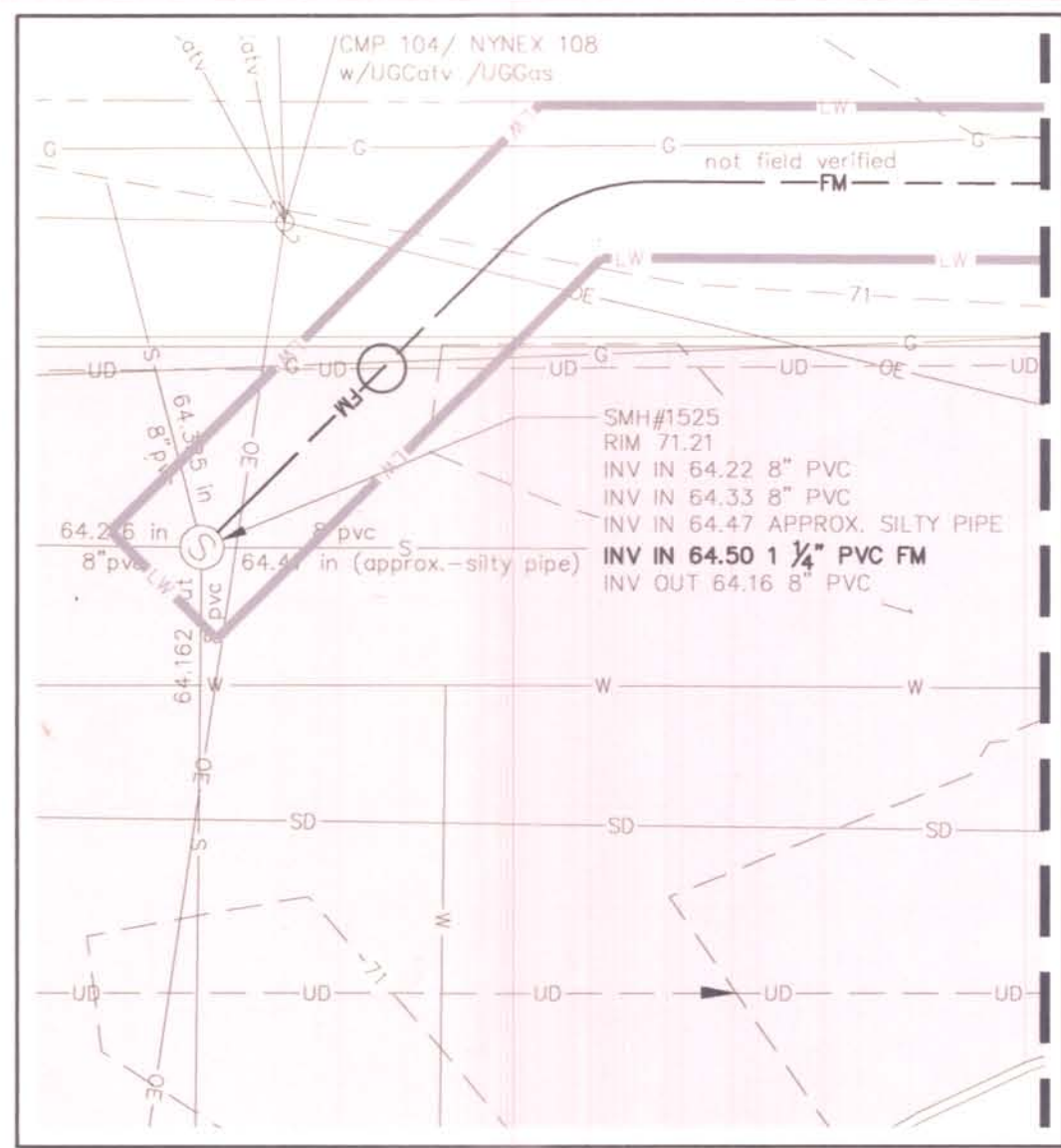


\\PORTLAND\Project\222804-Portland-Ben\_Eng\_Services\77-Riverside-South\_GC\_ProShop\_Design\Deliverables\2012.09.27\_Updated\_Site\_Plans\_for\_Riverside\_W&C\222804.77\_C200A.dwg\_Sep\_28\_2012\_2:35pm

LIC 360-A-4

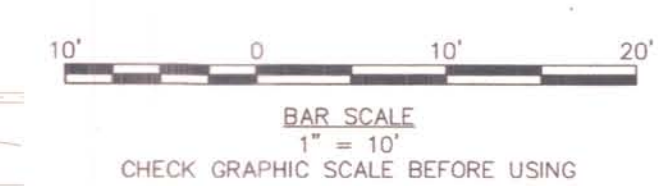


INSET A  
SCALE 1" = 10'

NOTES:

- CONTRACTOR MAY USE DIRECTIONAL DRILLING OR OPEN TRENCHING FOR THE INSTALLATION OF THE SEWER FORCEMAIN. CONTRACTOR MUST RETURN SURFACE AND AMENITIES TO ORIGINAL CONDITION. PIPE TRENCHING SHALL BE INSTALLED PER PORTLAND WATER DISTRICT TYPICAL TRENCH SECTION DETAILS. SEE [www.pwd.org/pdf/infrastructure/SewerTrenchDetail.pdf](http://www.pwd.org/pdf/infrastructure/SewerTrenchDetail.pdf)
- FORCEMAIN SHALL BE INSTALLED WITH A POSITIVE SLOPE SUCH THAT THERE ARE NO LOCAL HIGH POINTS.
- CONTRACTOR SHALL COORDINATE ALL WORK WITH CITY OF PORTLAND. GOLF COURSE FACILITY WILL BE UTILIZED DURING CONSTRUCTION. CONTRACTOR SHALL PREPARE A CONSTRUCTION MANAGEMENT PLAN, TO BE APPROVED BY THE CITY PRIOR TO CONSTRUCTION. THE PLAN SHALL ADDRESS ITEMS INCLUDING, BUT NOT LIMITED TO, PUBLIC SAFETY, PEDESTRIAN AND VEHICULAR TRAFFIC MOVEMENT, TEMPORARY FENCING, SECURITY, AND MATERIAL STOCKPILING.
- CONTRACTOR SHALL COORDINATE ALL ACTIVITIES WITH CMP AND COMMUNICATION UTILITIES. CONTRACTOR SHALL PROVIDE ALL NECESSARY POLE HARDWARE INCLUDING RISERS AND WEATHERHEADS, INSTALLED TO UTILITY COMPANY STANDARDS. SEE ELECTRICAL PLANS FOR ADDITIONAL INFORMATION.

SEE INSET A THIS SHEET



BAR SCALE  
1" = 10'  
CHECK GRAPHIC SCALE BEFORE USING

41 HUTCHINS DRIVE  
PORTLAND, MAINE 04102  
800.426.4262 | www.woodardcurran.com



COMMITMENT & INTEGRITY DRIVE RESULTS

LDD PROJECT NAME: N/A  
DRAWING NAME: 222804.77\_C200A.DWG  
FIELD BOOK USED: N/A

REFERENCES:  
RiversideSouthGolfCourse2011\_C201\_USJ.dwg

DESIGNED BY: DLG  
DRAWN BY: LBC  
CHECKED BY: DLG  
SCALE: 1" = 10'  
DATE: 09/28/2012



RIVERSIDE SOUTH  
GOLF COURSE PRO SHOP  
SITE PLAN

CITY OF PORTLAND, MAINE  
PUBLIC SERVICES DEPARTMENT  
ENGINEERING SECTION



SHEET #  
C003  
PLAN NUMBER

DECIDUOUS TREE

PROPOSED LANDSCAPE AREAS  
STONE DRIPEDGE/LANDSCAPING

GRASS