

LEGEND

-  *Vaccinium corymbosum* (high bush blueberry)
-  *Swida sericea* (red osier dogwood)
-  *Cornus racemosa* (gray dogwood)
-  *Spiraea alba* (meadowsweet)
-  *Spiraea tomentosa* (steepleshub)
-  *Rhododendron canadense* (rhodora)
-  *Amelanchier arborea* (downy serviceberry)
-  *Aronia melanocarpa* (black chokeberry)
-  *Ilex verticillata* (winterberry)
-  *Vaccinium angustifolium* (low bush blueberry)
-  *Lobelia cardinalis* (cardinal flower)
-  *Comptonia peregrina* (sweet fern)
-  *Athyrium filix-femina* (lady fern)
-  *Alnus incana* (speckled alder)
-  *Salix bebbiana* (long-beaked willow)
-  *Salix sericea* (silky willow)
-  *Salix discolor* (pussy willow)
-  *Salix nigra* (black willow)
-  *Salix petiolaris* (meadow willow)
-  *Clethra alnifolia* (summersweet)
- E** Existing Vegetation
-  Perennial Plantings
-  Willow Staking Area
-  25 foot Buffer
-  10 foot Buffer

Dole Brook Buffer Planting Enhancement Plan Layout

Portland, Maine

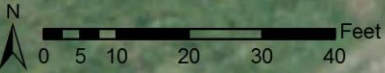


DOLE BROOK

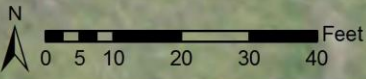
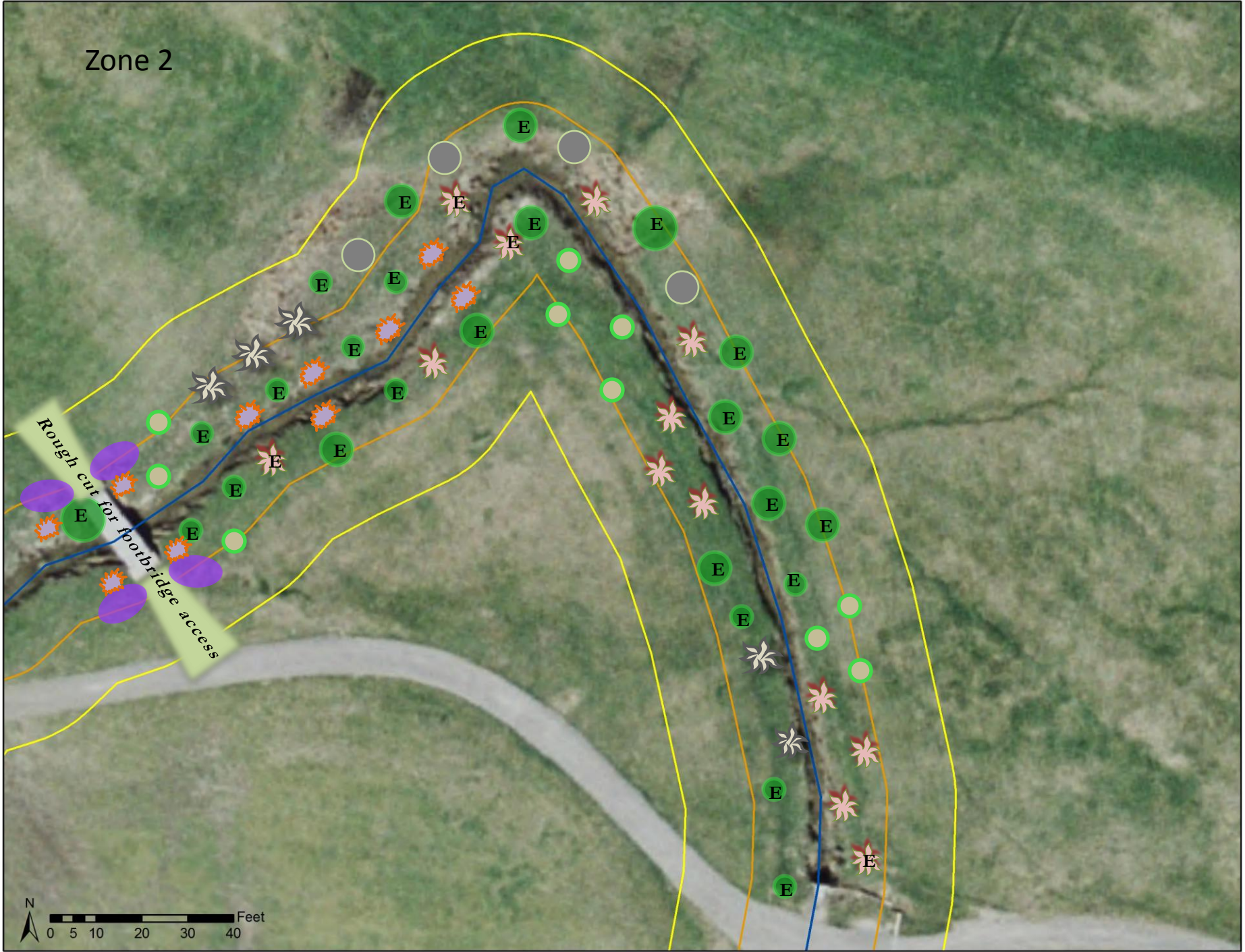
PLANTING ZONES 1-4



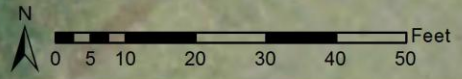
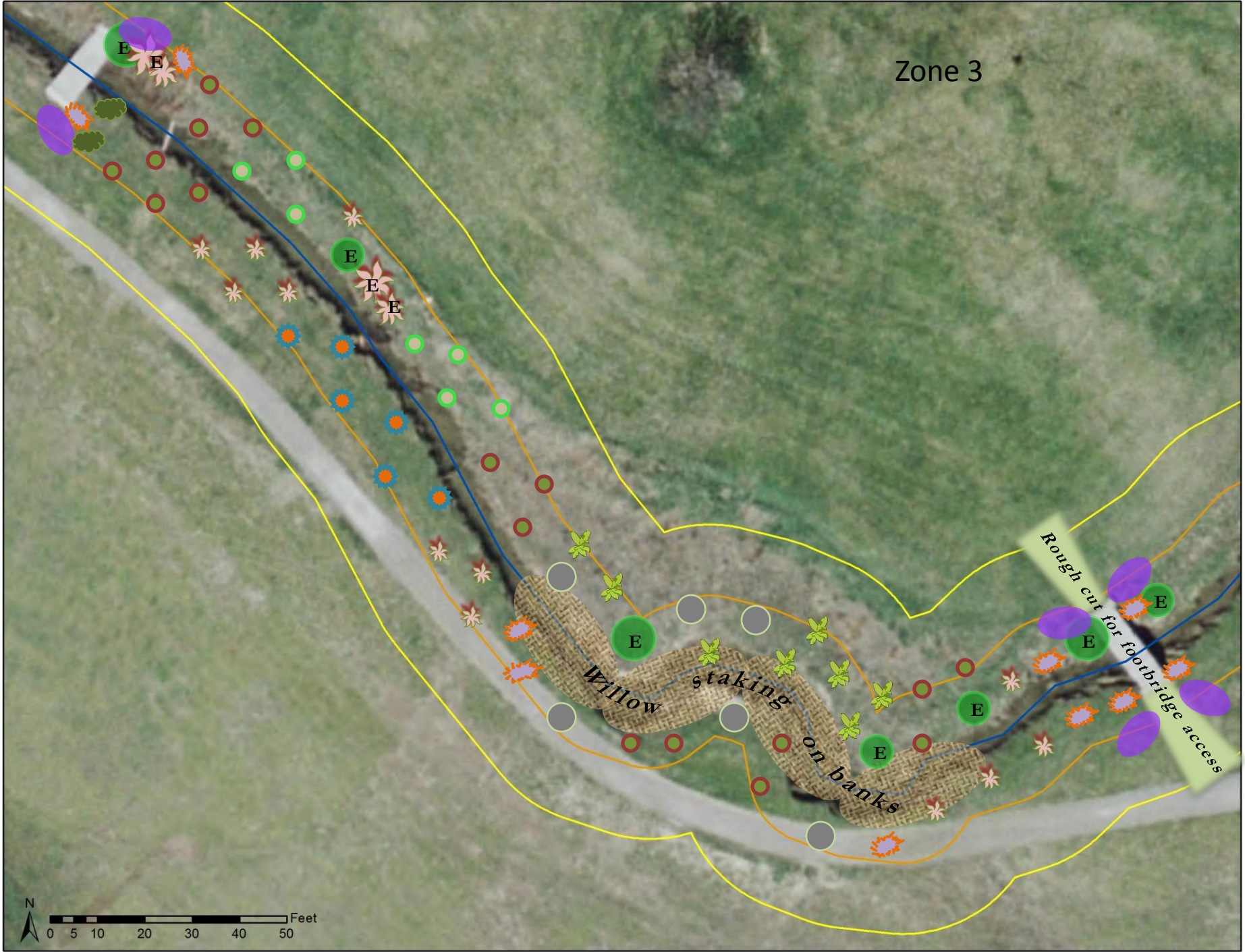
Zone 1



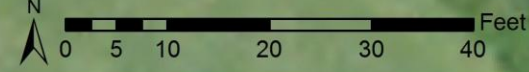
Zone 2



Zone 3



Zone 4



Rough cut for footbridge access

E E

