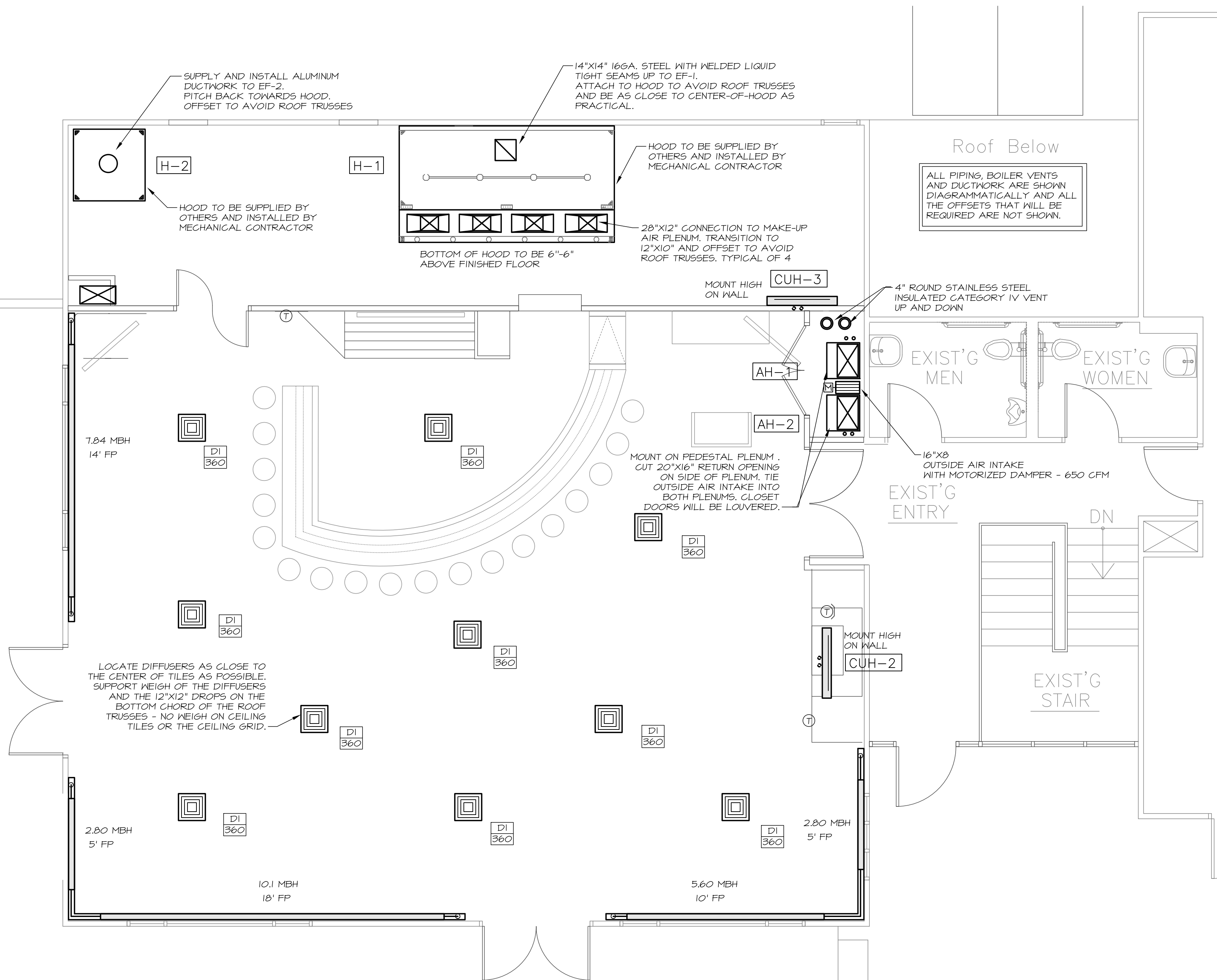


February 04, 2014 - 7:49 am  
 M:\Projects\1334 Riverside Clubhouse\Drawings\1334 M1-M6.dwg



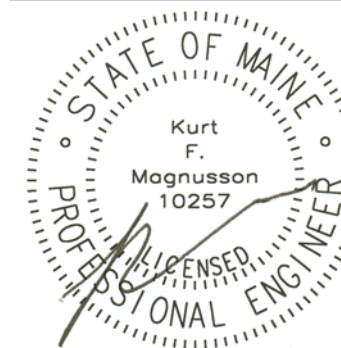
**1 UPPER LEVEL MECHANICAL PLAN**  
 SCALE: 1/4" = 1'-0"



**MECHANICAL SYSTEMS ENGINEERS**  
 ROYAL RIVER CENTER, UNIT #10  
 10 FOREST FALLS DRIVE  
 YARMOUTH, MAINE 04096  
 FACEBOOK: MECHANICAL SYSTEMS ENGINEERS  
 207-846-1441  
 M.S.E. Proj. 1334  
 © COPYRIGHT 2014



5 Milk Street  
 Portland, Maine 04101  
 207 774 4811  
 www.wintonscott.com



HVAC & plumbing Engineering:  
 MECHANICAL SYSTEMS ENGINEERS

Electrical Engineering:  
 SWIFT CURRENT ENGINEERING

Food Service Design Consultant:  
 TJM CONSULTING

**Riverside  
 Golf Course -  
 North Course  
 Club House  
 Renovations**

Riverside Street  
 Portland, Maine

REVISIONS

CONTRACT DOCUMENTS  
 February 03, 2014

Upper Level  
 Mechanical  
 Plan

Noted

**M2**