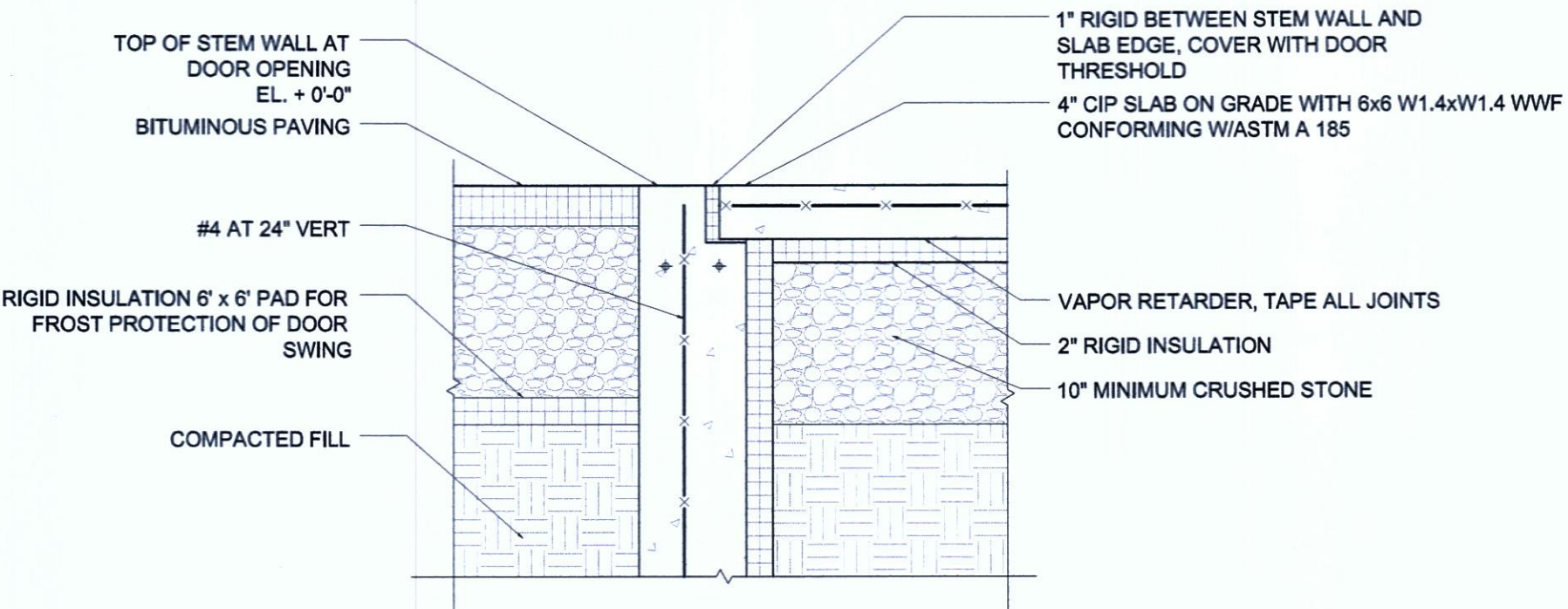
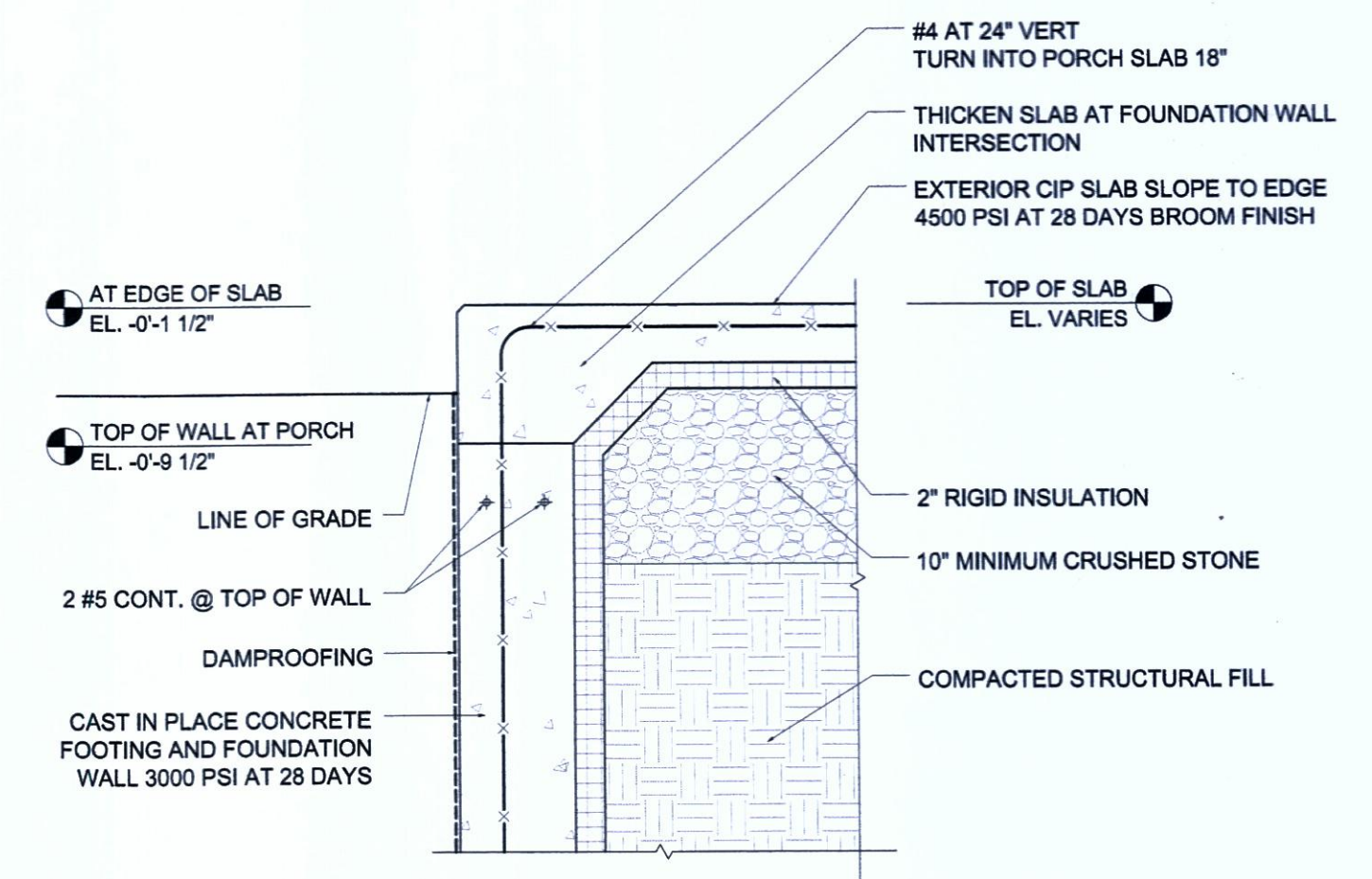


**A** Wall Section  
1/4"=1'-0"



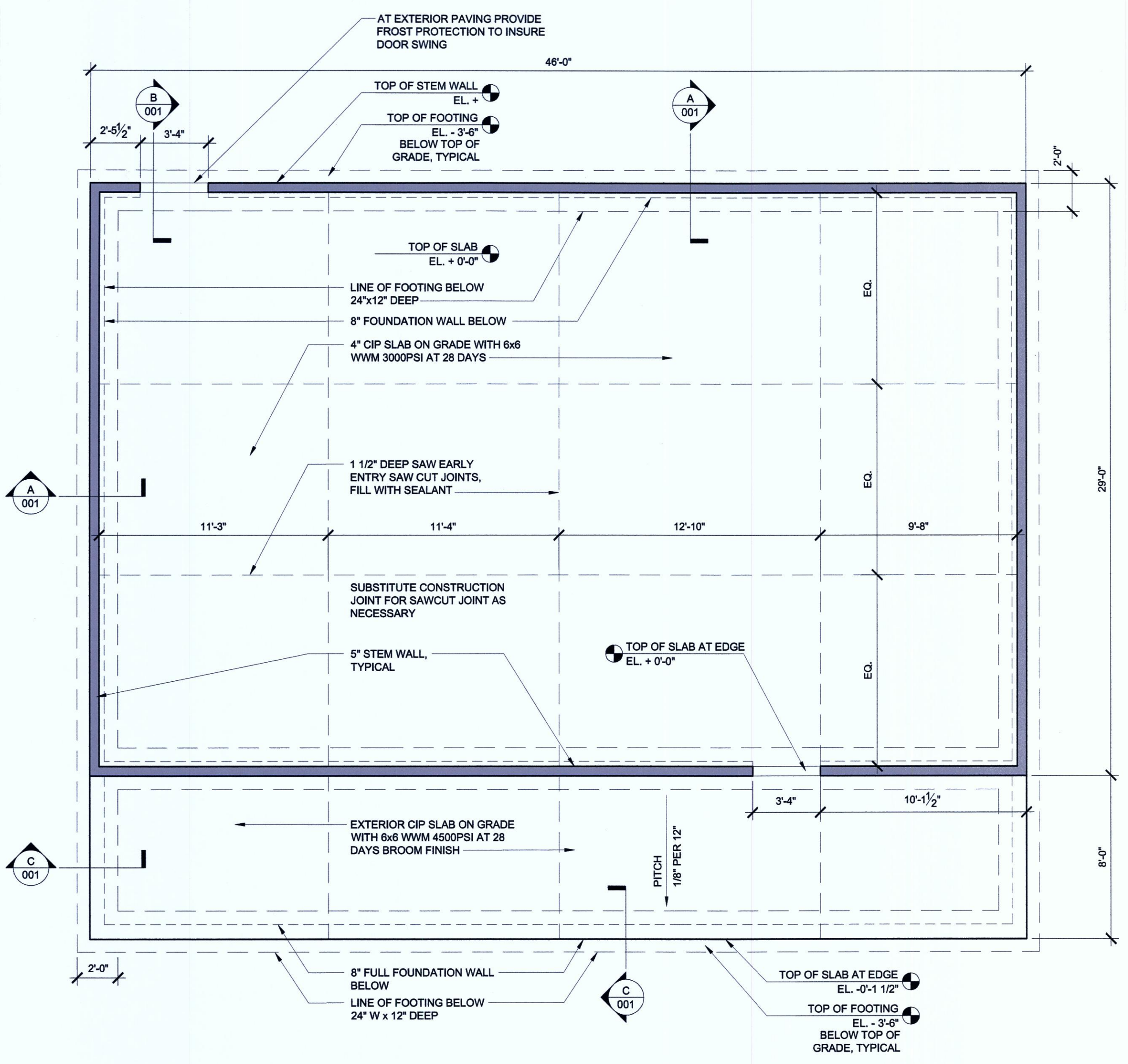
**B** TOW Detail at Door Threshold  
1/4"=1'-0"

- A = Annunciator
- K = Knox box
- P = Pull
- F = FACP
- D = horn strobe
- △ = strobe
- O = Smoke

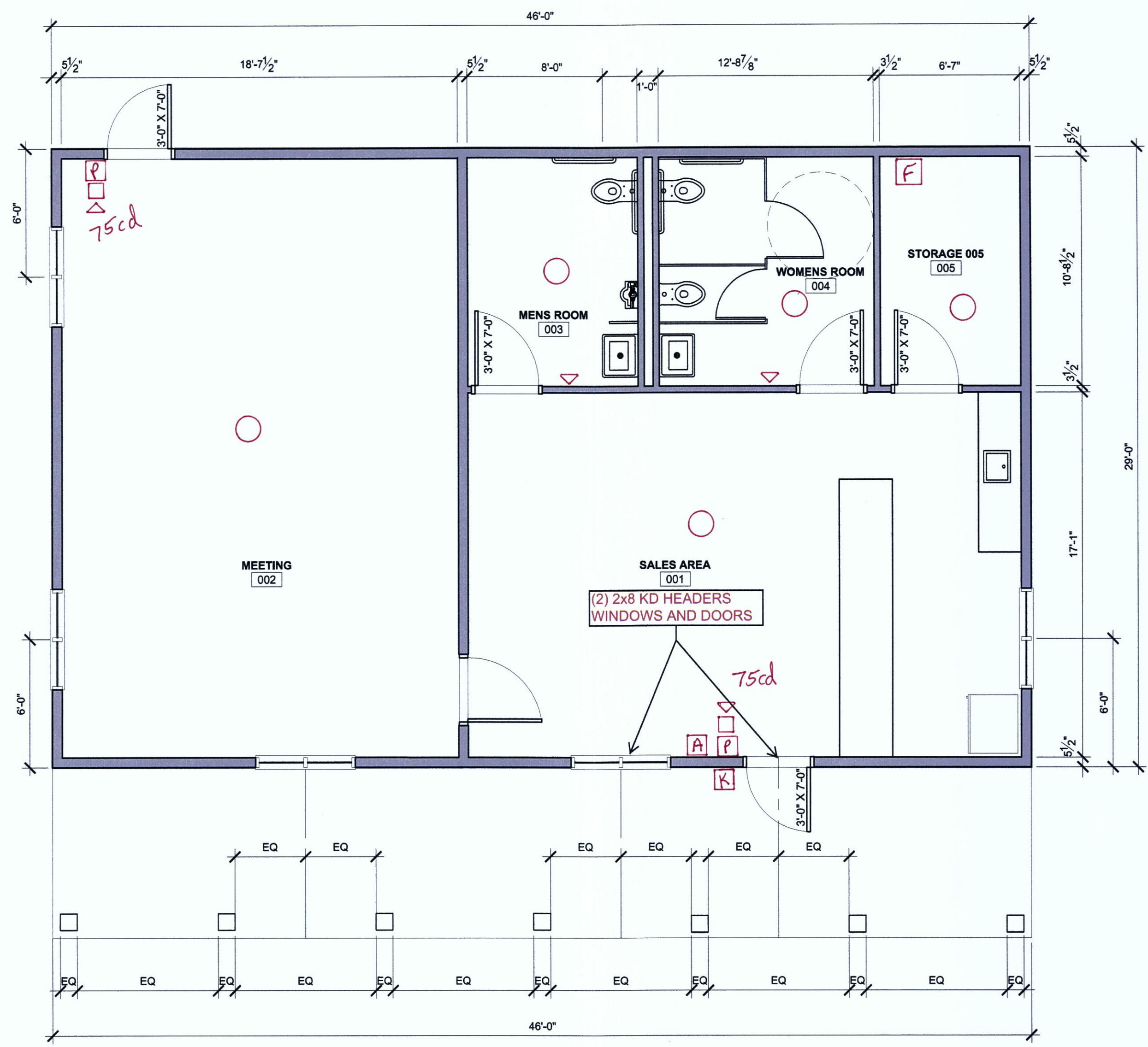


**C** Porch Edge Detail  
1/4"=1'-0"

- GENERAL FOUNDATION NOTES:
- ALL FOOTINGS TO BEAR ON UNDISTURBED NATIVE SOIL. ADJUST ELEVATION ACCORDINGLY.
  - CONCRETE SLAB TO CONFORM TO IBC 2009, SECTION 1905
  - CONCRETE MIX TO CONFORM TO IBC 2009, SECTION 1905
  - COORDINATE PLUMBING, WASTE, DRAINAGE BY OTHERS. PROVIDE ROUGH INS AND BOND OUTS AS NECESSARY.
  - SEE DETAIL SECTIONS FOR INSULATION, REINFORCING, VAPOR BARRIERS, ANCHOR BOLTS, ETC.



**1** Foundation Plan  
1/4"=1'-0"



**2** Plan  
1/4"=1'-0"

NOTE WELL: DESIGN LIMITED TO FOUNDATION PLAN, FLOOR PLAN, WALL SECTION. STRUCTURAL ENGINEERING, ELECTRICAL, LIGHTING, PLUMBING, HEATING, INTERIOR DETAILING BY OTHERS. ISSUED FOR PERMITTING, APRIL 12, 2013

Scott Simons Architects  
75 York Street, Portland, Maine 04101  
www.scotssimonsarchitects.com  
207.772.4656



LDD PROJECT NAME: N/A  
DRAWING NAME: N/A  
FIELD BOOK USED: N/A

REFERENCES:  
RiversideSouthCourse001\_LDD\_LUS.dwg

DESIGNED BY:	DRAWN BY:	CHECKED BY:	SCALE:	DATE:



RIVERSIDE SOUTH  
GOLF COURSE PRO SHOP

CITY OF PORTLAND, MAINE  
RECREATION AND FACILITIES  
MANAGEMENT DEPARTMENT



SHEET #  
**001**  
PLAN NUMBER