

Structural Engineering:  
BECKER STRUCTURAL  
ENGINEERS, INC.

HVAC & plumbing Engineering:  
MECHANICAL SYSTEMS  
ENGINEERS

Electrical Engineering:  
SWIFT CURRENT  
ENGINEERING

**Riverside  
Golf Course -  
North Course  
Club House  
Renovations  
PHASE II**

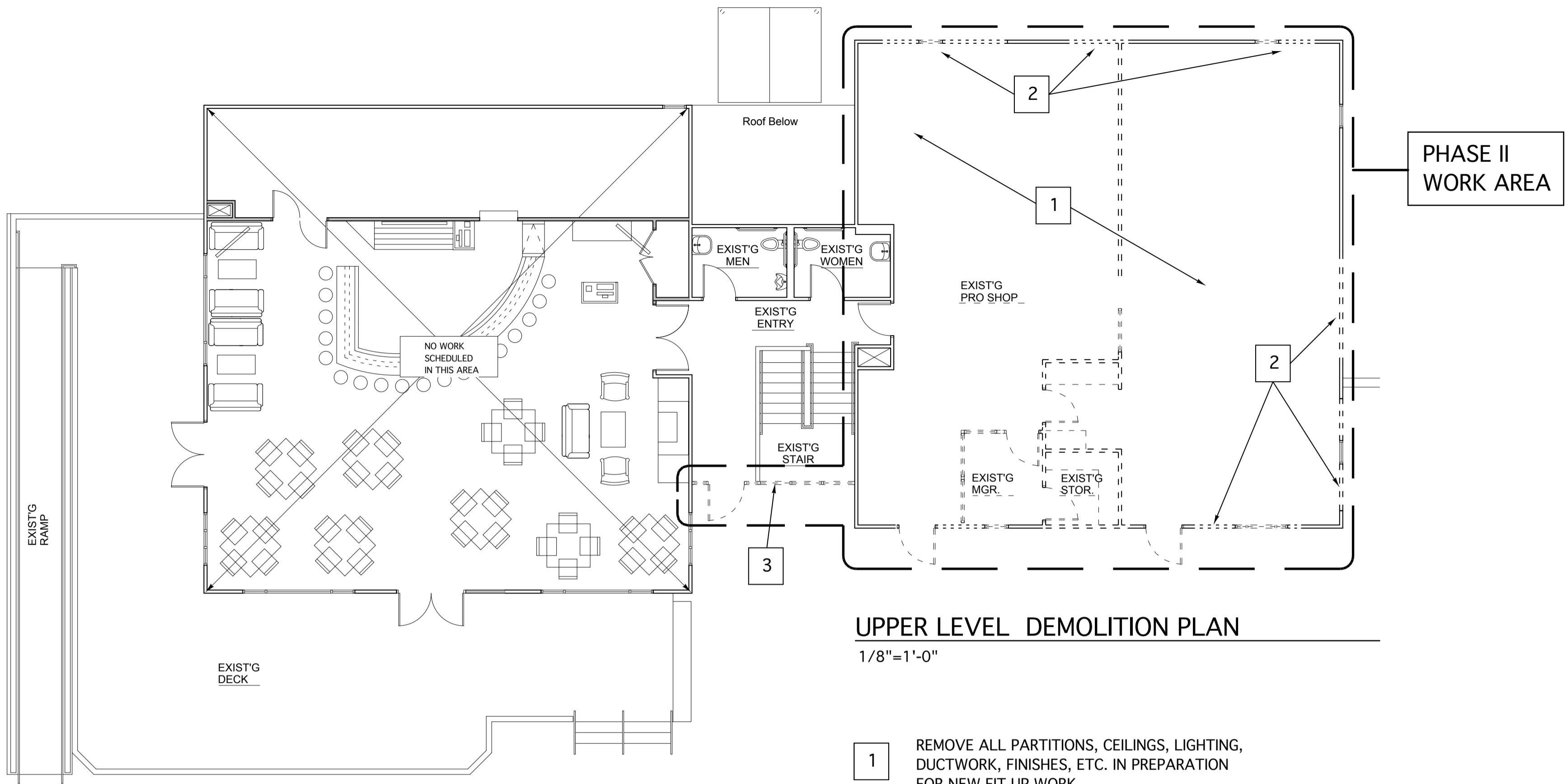
Riverside Street  
Portland, Maine

REVISIONS

PERMIT  
DOCUMENTS  
JANUARY 16, 2015

Demolition Plan

Scale: As Noted



**UPPER LEVEL DEMOLITION PLAN**

1/8"=1'-0"

- 1** REMOVE ALL PARTITIONS, CEILINGS, LIGHTING, DUCTWORK, FINISHES, ETC. IN PREPARATION FOR NEW FIT UP WORK
- 2** REMOVE PORTIONS OF EXTERIOR WALLS AS REQUIRED TO CREATE ROUGH OPENINGS FOR NEW WINDOW AND DOOR UNITS.
- 3** REMOVE EXISTING STOREFRONT FRAMING AND ENTRANCE IN PREPARATION FOR REPLACEMENT.