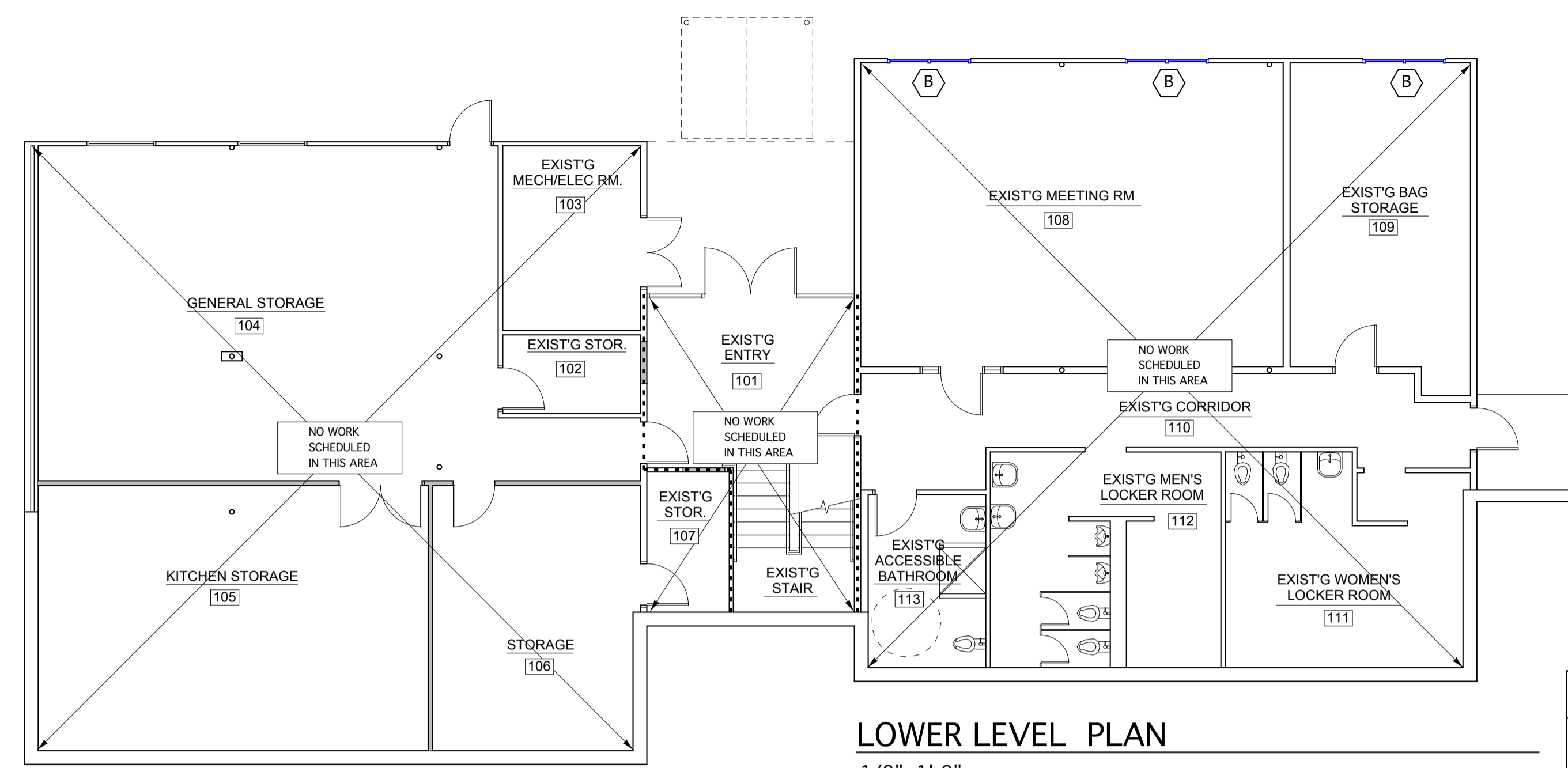


HVAC & plumbing Engineering:
MECHANICAL SYSTEMS ENGINEERS

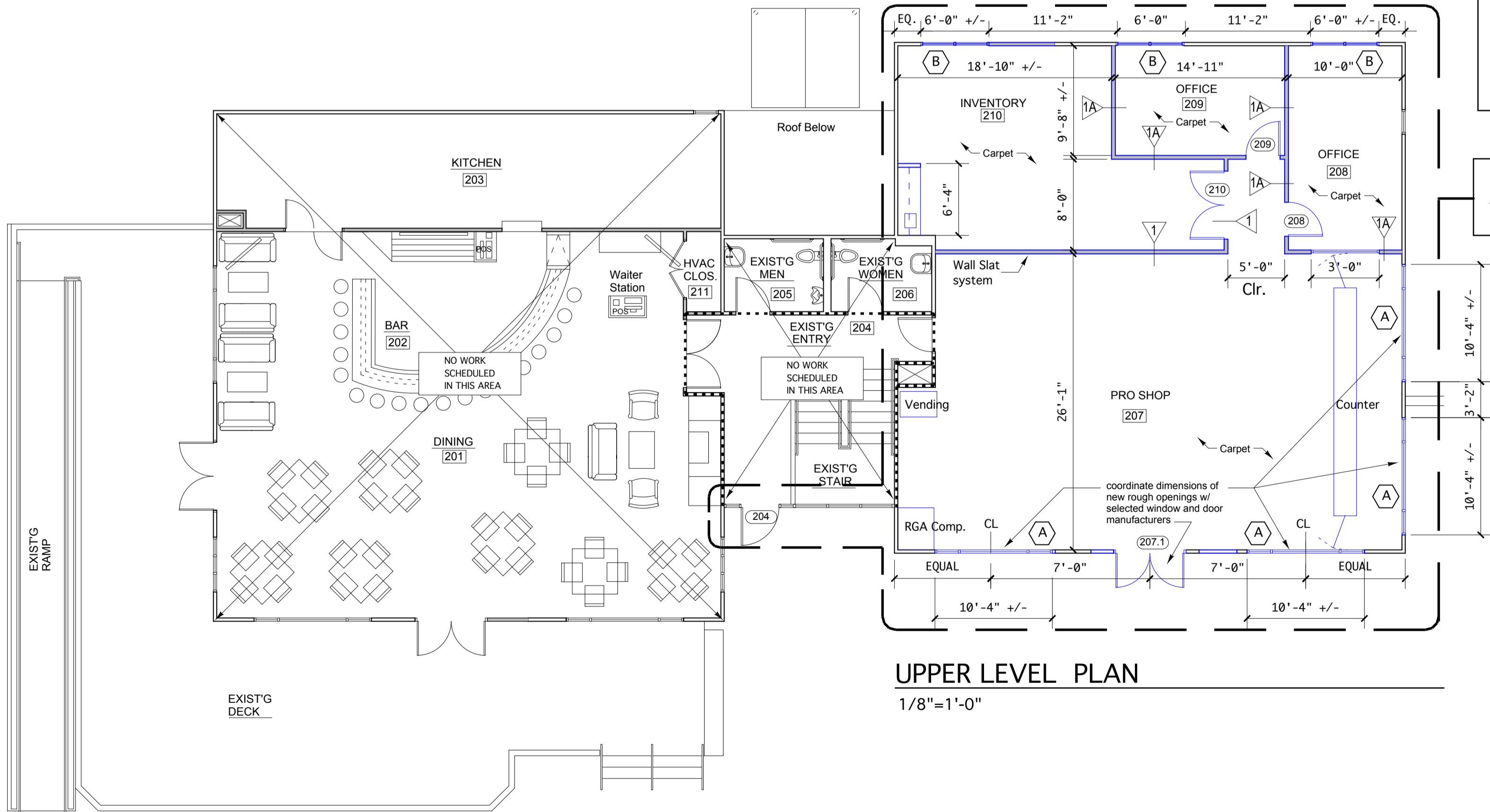
Electrical Engineering:
SWIFT CURRENT ENGINEERING



LOWER LEVEL PLAN

1/8"=1'-0"

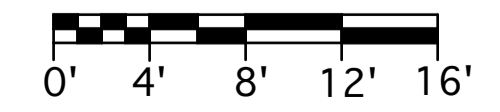
LEGEND	
	EXISTING PARTITION TO REMAIN
	NEW PARTITION AS SCHEDULED
	EXISTING 1 HOUR RATED PARTITION



UPPER LEVEL PLAN

1/8"=1'-0"

PHASE II WORK AREA



Riverside Golf Course - North Course Club House Renovations PHASE II

Riverside Street
Portland, Maine

REVISIONS

PERMIT DOCUMENTS
JANUARY 16, 2015

Layout Plans

Scale: As Noted