

**HOOD INFORMATION - Job#1978265**

HOOD NO.	TAG	MODEL	LENGTH	MAX. COOKING TEMP.	EXHAUST PLENUM RISER(S)					TOTAL SUPPLY CFM	HOOD CONSTRUCTION	HOOD CONFIG.		
					WIDTH	LENG.	DIA.	CFM	S.P.			END TO END	ROW	
1		5424 ND-2-PSP-F	12' 0.00'	600 Deg.	3000			14"	1500	-0.395"	2700	430 SS Where Exposed	ALONE	ALONE
2	Dishwasher	4824 VHB-G	4' 0.00'	700 Deg.	600			12"	600	-0.066"	0	304 SS 100%	ALONE	ALONE

**HOOD INFORMATION**

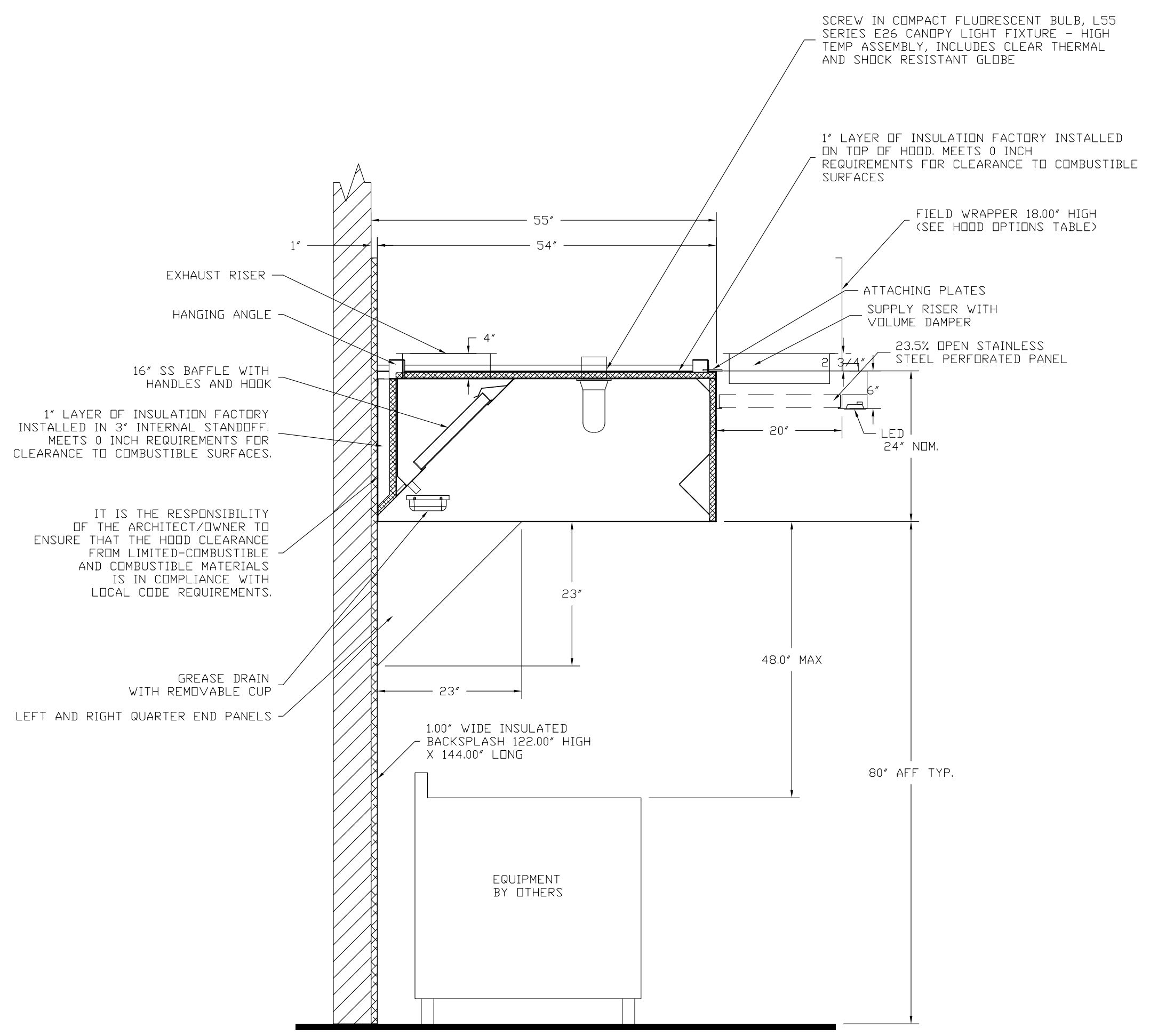
HOOD NO.	TAG	FILTER(S)				LIGHT(S)			UTILITY CABINET(S)				FIRE SYSTEM PIPING	HOOD HANGING WGT	
		TYPE	QTY.	HEIGHT	LENGTH	QTY.	TYPE	WIRE GUARD	LOCATION	FIRE SYSTEM TYPE	SIZE	ELECTRICAL MODEL #			SWITCHES QUANTITY
1		SS Baffle with Handles	4	16"	16"	4	Screw In Compact	ND						ND	755 LBS
2	Dishwasher					0								ND	178 LBS

**HOOD OPTIONS**

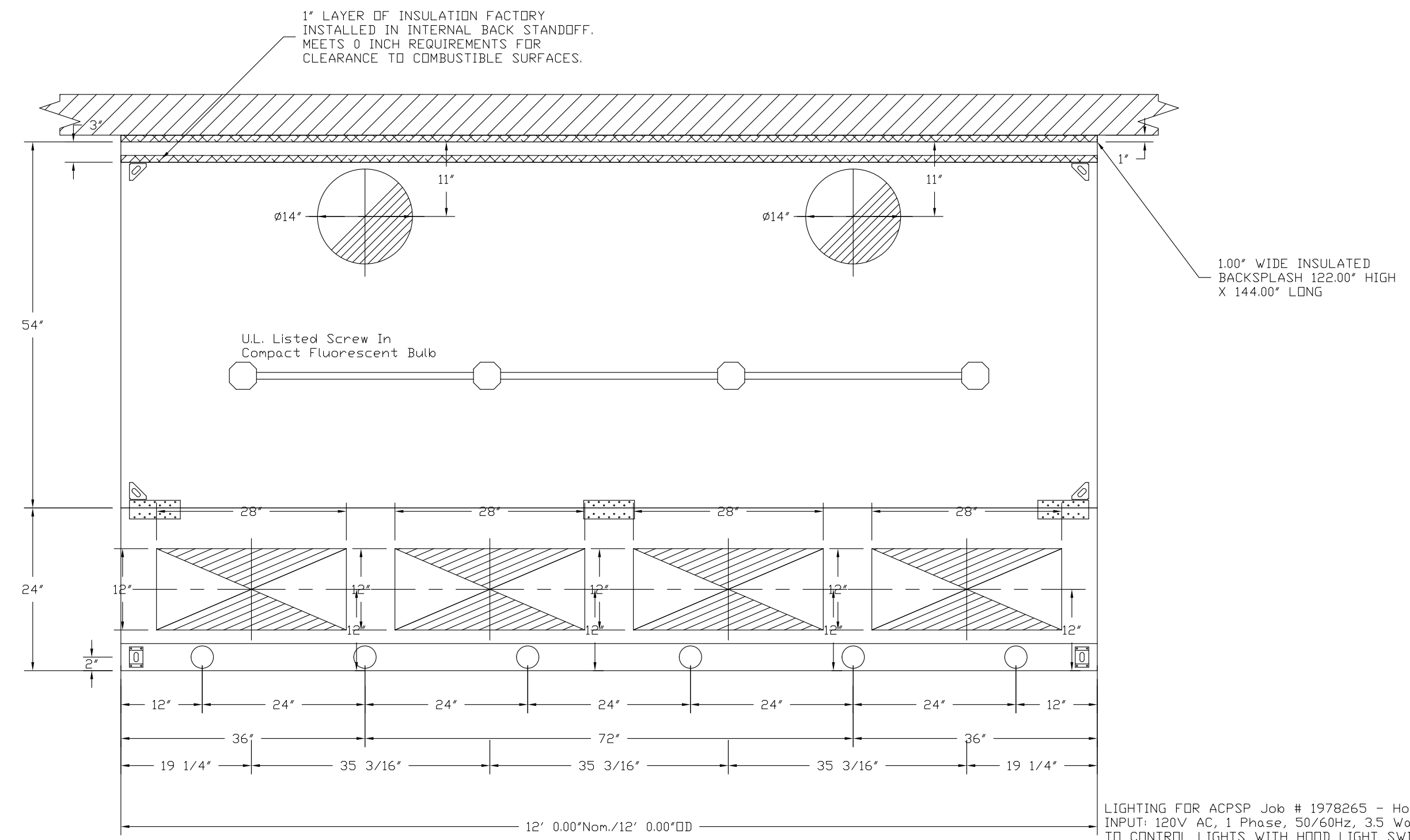
HOOD NO.	TAG	OPTION
1		FIELD WRAPPER 18.00' High Front, Left, Right
		BACKSPLASH 122.00' High X 144.00' Long X 1.00' Wide Insulated 430 SS
		RIGHT QUARTER END PANEL 23' Top Width, 0' Bottom Width, 23' High 430 SS
		LEFT QUARTER END PANEL 23' Top Width, 0' Bottom Width, 23' High 430 SS
		INSULATION FOR TOP OF HOOD
		INSULATION FOR BACK OF HOOD
2	Dishwasher	FIELD WRAPPER 18.00' High Front, Right
		BACKSPLASH 80.00' High X 48.00' Long 304 SS
		LEFT SIDESPLASH 80.00' High X 48.00' Long 304 SS
		BACKSPLASH - INSIDE CORNER 80.00' High X 2.00' Leg Length 304 SS

**PERFORATED SUPPLY PLENUM(S)**

HOOD NO.	TAG	POS.	LENGTH	WIDTH	HEIGHT	TYPE	RISER(S)			CFM	S.P.
							WIDTH	LENG.	DIA.		
1		Front	144'	24'	6'	MUA	12"	28"		675	0.173"
						MUA	12"	28"		675	0.173"
						MUA	12"	28"		675	0.173"
						MUA	12"	28"		675	0.173"



SECTION VIEW - MODEL 5424ND-2-PSP-F HOOD - #1



PLAN VIEW - Hood #1  
12' 0.00" LONG 5424ND-2-PSP-F  
NOTE: Additional hanging angles provided for hoods 12' and longer.

LIGHTING FOR ACPS Job # 1978265 - Hood #1  
INPUT: 120V AC, 1 Phase, 50/60Hz, 3.5 Watts per light.  
TO CONTROL LIGHTS WITH HOOD LIGHT SWITCH, WIRE PER HOOD ELECTRICAL CONTROL PANEL SCHEMATIC.  
TO CONTROL LIGHTS WITH BUILDING LIGHT SWITCH, WIRE BLACK AND WHITE WIRE TO A 120VAC SERVICE.  
END TO END ACSPS REQUIRE 120VAC FIELD WIRING FROM J-BOX TO J-BOX. REPLACE LIGHTS WITH LED LIGHTS ONLY.

REVISIONS	
DESCRIPTION	DATE

**CAPTIVE AIR**

MAINE OFFICE  
www.captiveair.com  
www.captiveair.com  
reg21@captiveair.com

Riverside Golf Course r1  
WINTHROP, ME

DATE: 2/26/2014  
DWG.#: 1978265  
DRAWN BY: BFC-21  
SCALE: 3/4" = 1'-0"  
MASTER DRAWING

SHEET NO.  
1