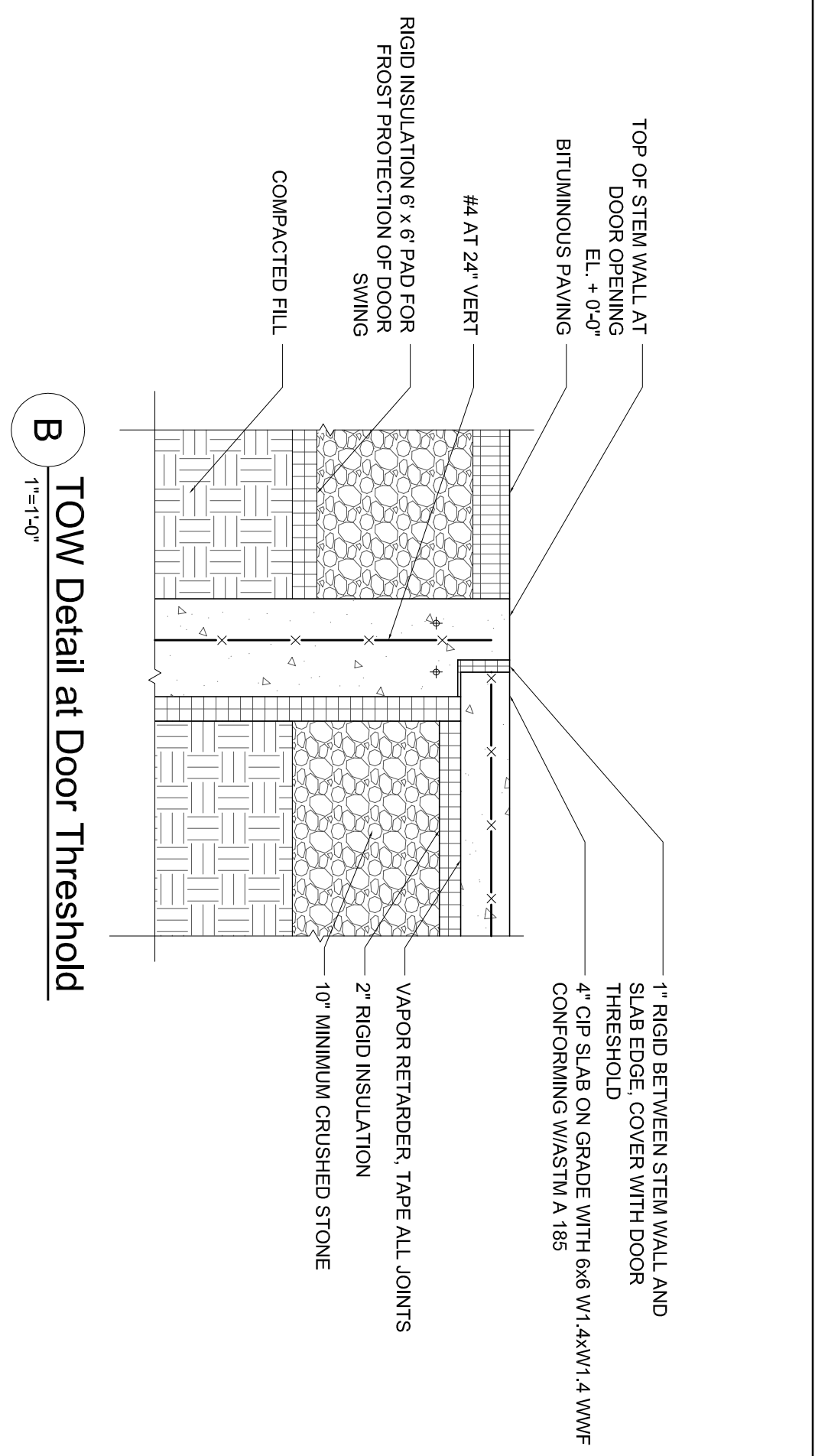
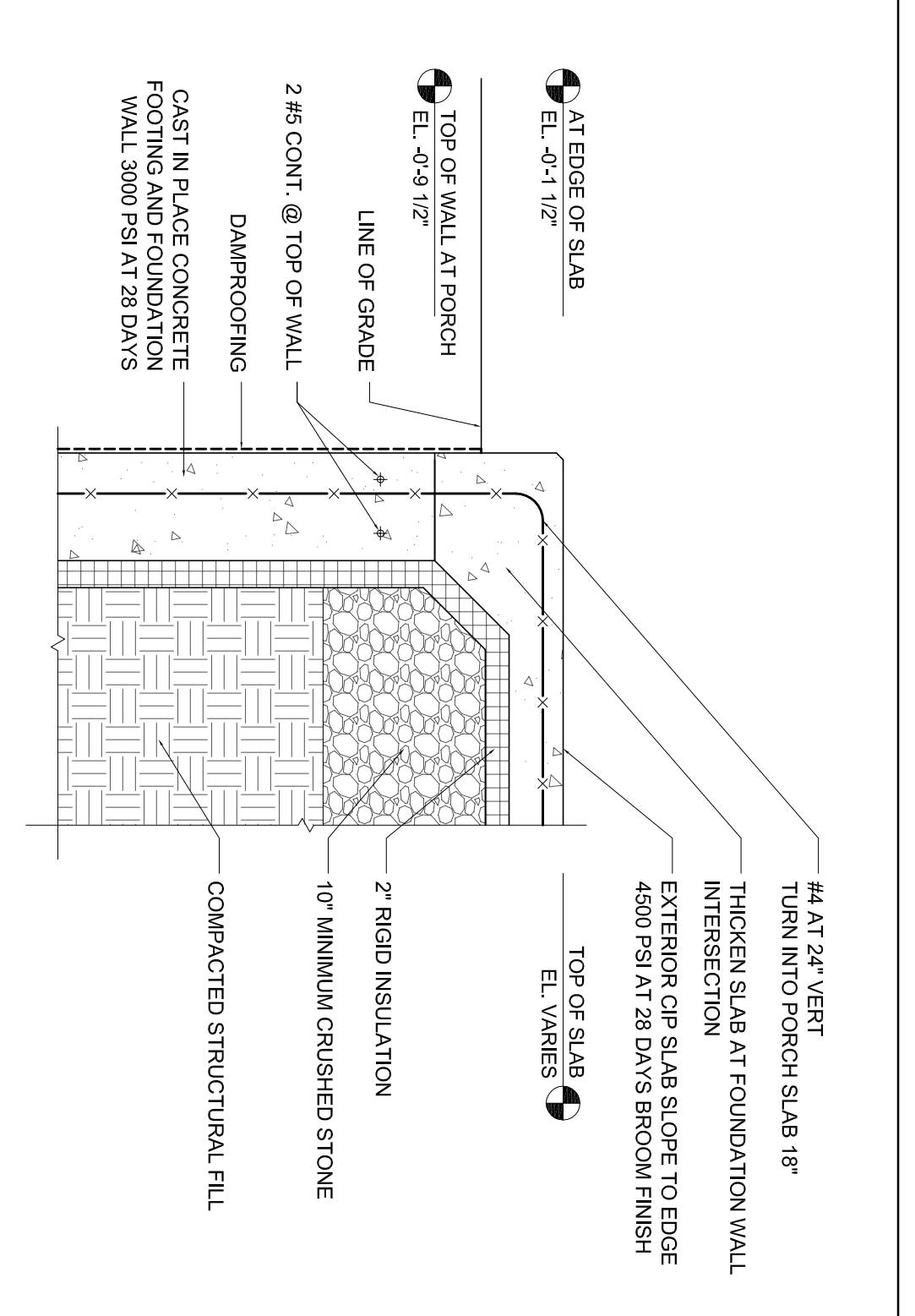


**A** Wall Section  
1/4"=1'-0"

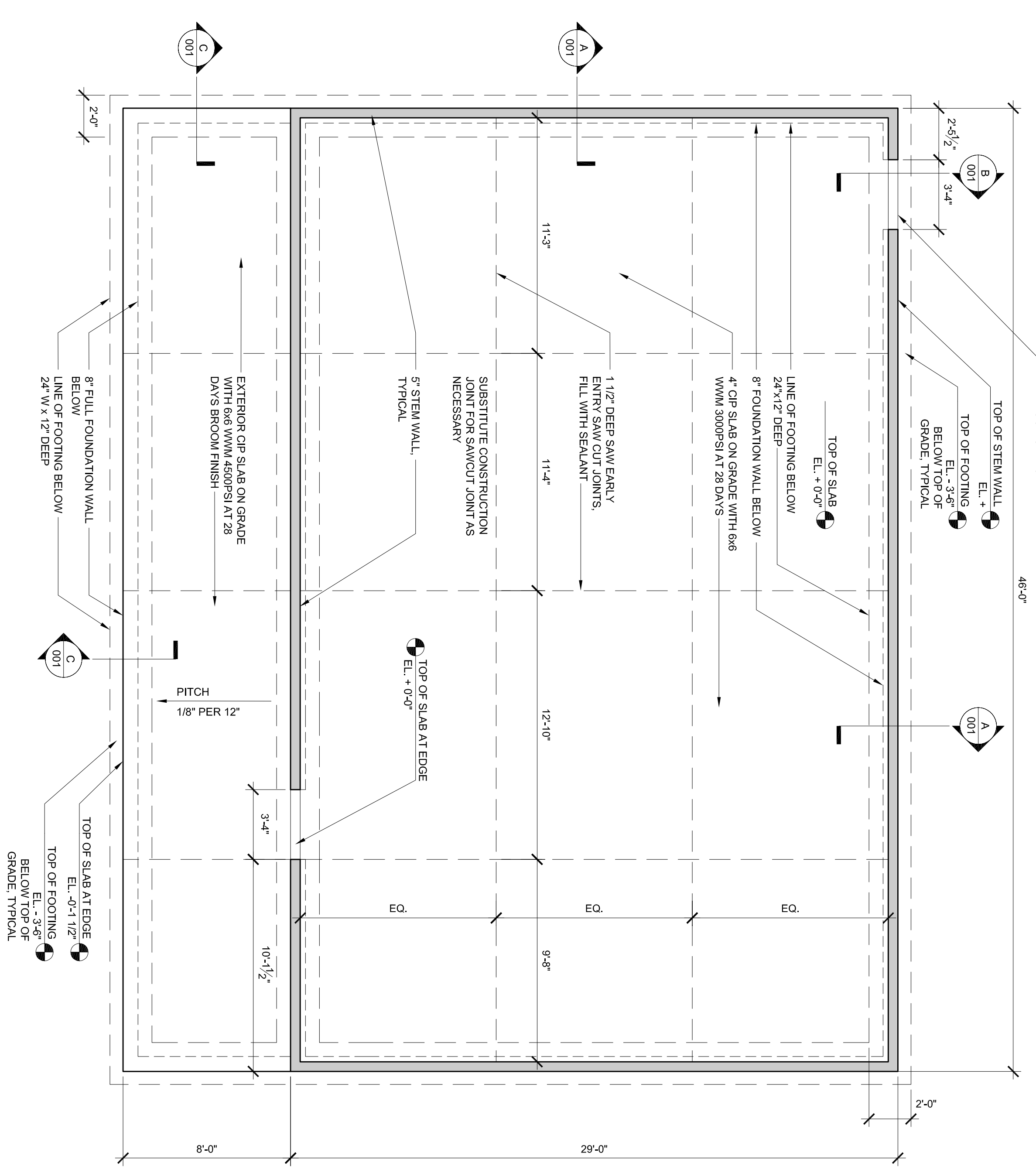


**B** TOW Detail at Door Threshold  
1/4"=1'-0"

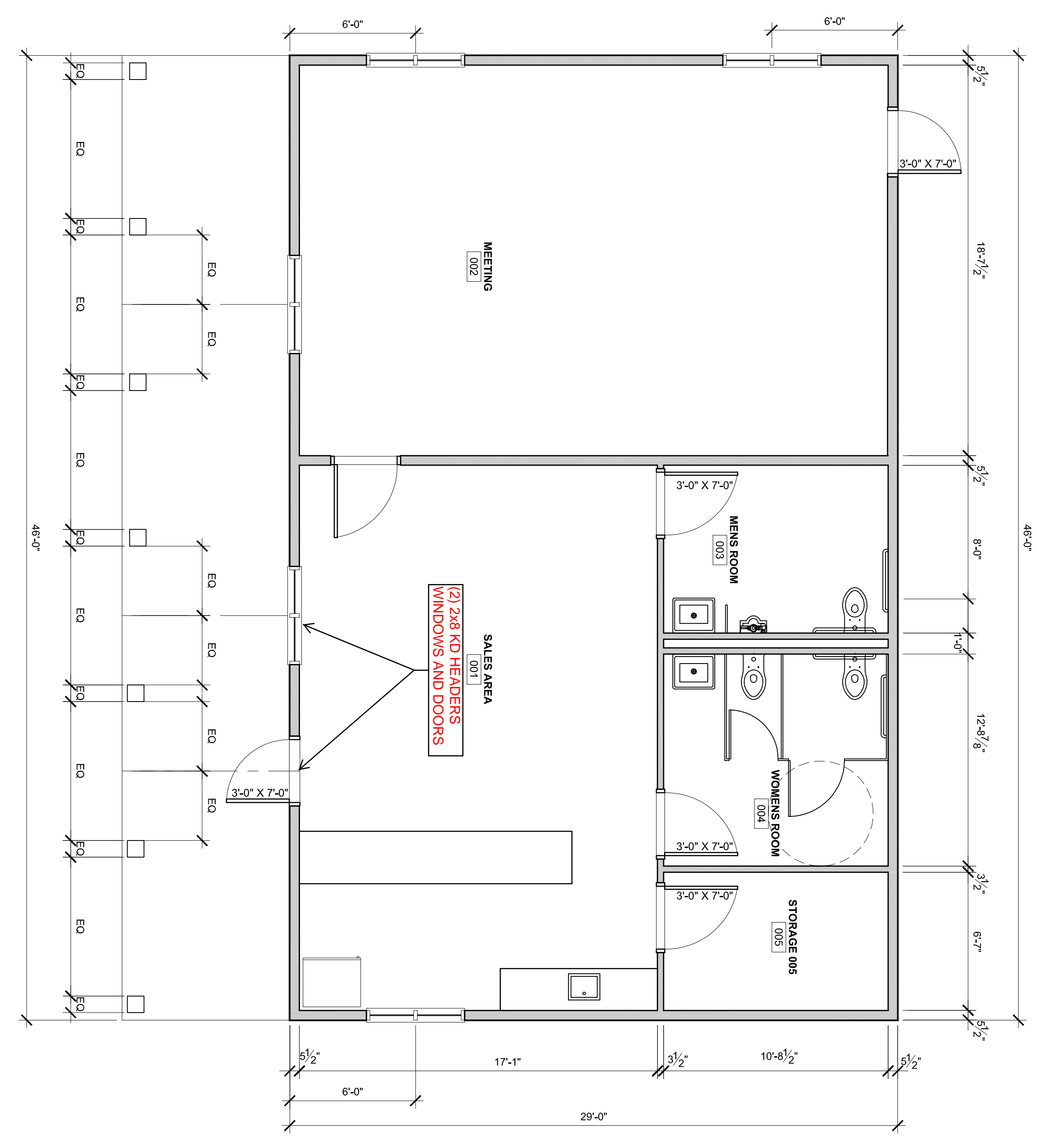


**C** Porch Edge Detail  
1/4"=1'-0"

- GENERAL FOUNDATION NOTES:
1. ALL FOOTINGS TO BEAR ON UNDISTURBED NATIVE SOIL. ADJUST ELEVATION ACCORDINGLY.
  2. CONCRETE SLAB TO CONFORM TO IRC 2009, SECTION 1905.
  3. CONCRETE PLUMBING AND WASTE DRAINING OTHERS. PROVIDE ROUGH INS AND BOND OUTS AS NECESSARY.
  4. SEE DETAIL SECTIONS FOR INSULATION, REINFORCING, VAPOR BARRIERS, ANCHOR BOLTS, ETC.



**1** Foundation Plan  
1/4"=1'-0"



**2** Plan  
1/4"=1'-0"

NOTE WELL: DESIGN LIMITED TO FOUNDATION PLAN, FLOOR PLAN, WALL SECTION, STRUCTURAL ENGINEERING, ELECTRICAL, LIGHTING, PLUMBING, HEATING, INTERIOR DETAILING BY OTHERS. ISSUED FOR PERMITTING, APRIL 12, 2013

