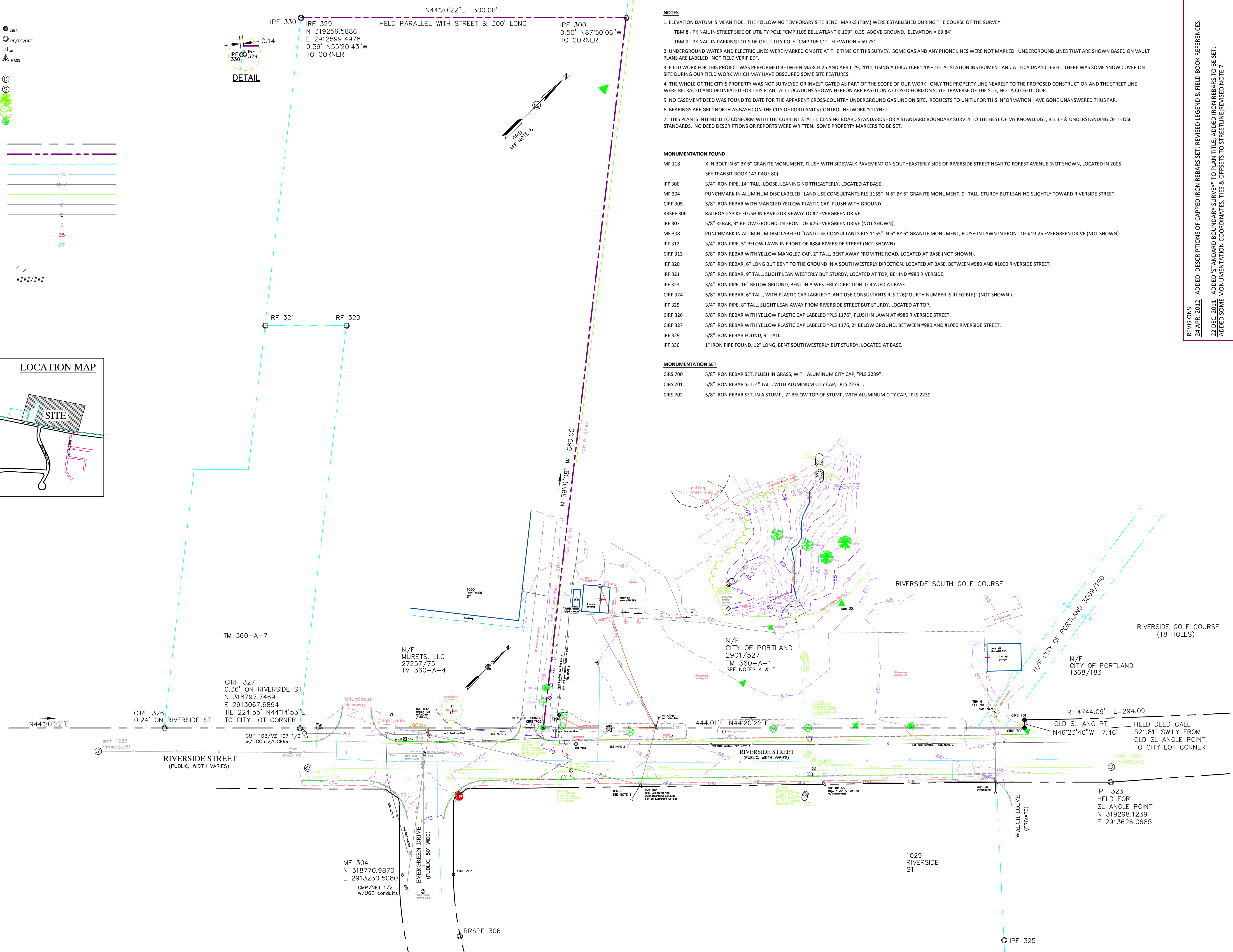
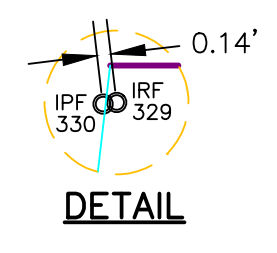
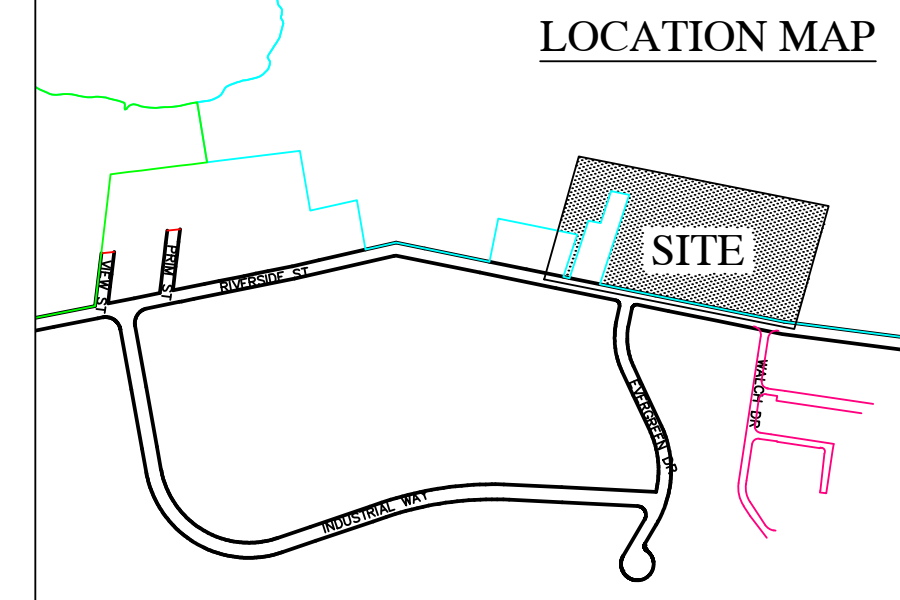


**LEGEND**

CAPPED 5/8" IRON REBAR SET	● CIR5
IRON PIPE/POD FOUND	○ IPF / IRF / CIRF
MONUMENT FOUND	□ MF
MAG NAIL SET	▲ MADS
DRAIN MANHOLE	Ⓧ
SEWER MANHOLE	Ⓢ
CONIFEROUS TREE	🌲
DECIDUOUS TREE	🌳
TREE STUMP	🪵
STREET LINE	—
PROPERTY LINE	—
PARCEL LINE	—
CHAIN LINK FENCE	—
OVERHEAD UTILITIES	—
DRAIN LINE	—
GAS LINE	—
ELECTRIC LINE	—
SEWER LINE	—
5' CONTOUR LINE	-65-
1' CONTOUR LINE	-67-
COMMON OWNERSHIP	⚡
REFERENCE TO RECORDED DEED	####/###



**NOTES**

- ELEVATION DATUM IS MEAN TIDE. THE FOLLOWING TEMPORARY SITE BENCHMARKS (TBM) WERE ESTABLISHED DURING THE COURSE OF THE SURVEY:  
TBM 8 - PK NAIL IN STREET SIDE OF UTILITY POLE "CMP J105 BELL ATLANTIC 109", 0.35' ABOVE GROUND. ELEVATION = 69.84'.  
TBM 9 - PK NAIL IN PARKING LOT SIDE OF UTILITY POLE "CMP 106.01". ELEVATION = 69.75'.
- UNDERGROUND WATER AND ELECTRIC LINES WERE MARKED ON SITE AT THE TIME OF THIS SURVEY. SOME GAS AND ANY PHONE LINES WERE NOT MARKED. UNDERGROUND LINES THAT ARE SHOWN BASED ON VAULT PLANS ARE LABELED "NOT FIELD VERIFIED".
- FIELD WORK FOR THIS PROJECT WAS PERFORMED BETWEEN MARCH 25 AND APRIL 29, 2011, USING A LEICA TCRP1205+ TOTAL STATION INSTRUMENT AND A LEICA DNA10 LEVEL. THERE WAS SOME SNOW COVER ON SITE DURING OUR FIELD WORK WHICH MAY HAVE OBSCURED SOME SITE FEATURES.
- THE WHOLE OF THE CITY'S PROPERTY WAS NOT SURVEYED OR INVESTIGATED AS PART OF THE SCOPE OF OUR WORK. ONLY THE PROPERTY LINE NEAREST TO THE PROPOSED CONSTRUCTION AND THE STREET LINE WERE RETRACED AND DELINEATED FOR THIS PLAN. ALL LOCATIONS SHOWN HEREON ARE BASED ON A CLOSED-HORIZON STYLE TRAVERSE OF THE SITE, NOT A CLOSED LOOP.
- NO EASEMENT DEED WAS FOUND TO DATE FOR THE APPARENT CROSS-COUNTRY UNDERGROUND GAS LINE ON SITE. REQUESTS TO UNITIL FOR THIS INFORMATION HAVE GONE UNANSWERED THUS FAR.
- BEARINGS ARE GRID NORTH AS BASED ON THE CITY OF PORTLAND'S CONTROL NETWORK "CITYNET".
- THIS PLAN IS INTENDED TO CONFORM WITH THE CURRENT STATE LICENSING BOARD STANDARDS FOR A STANDARD BOUNDARY SURVEY TO THE BEST OF MY KNOWLEDGE, BELIEF & UNDERSTANDING OF THOSE STANDARDS. NO DEED DESCRIPTIONS OR REPORTS WERE WRITTEN. SOME PROPERTY MARKERS TO BE SET.

**MONUMENTATION FOUND**

- MF 118 X IN BOLT IN 6" BY 6" GRANITE MONUMENT, FLUSH WITH SIDEWALK PAVEMENT ON SOUTHEASTERLY SIDE OF RIVERSIDE STREET NEAR TO FOREST AVENUE (NOT SHOWN, LOCATED IN 2005; SEE TRANSIT BOOK 142 PAGE 80).
- IPF 300 3/4" IRON PIPE, 14" TALL, LOOSE, LEANING NORTHEASTERLY, LOCATED AT BASE.
- MF 304 PUNCHMARK IN ALUMINUM DISC LABELED "LAND USE CONSULTANTS RLS 1155" IN 6" BY 6" GRANITE MONUMENT, 9" TALL, STURDY BUT LEANING SLIGHTLY TOWARD RIVERSIDE STREET.
- CIRF 305 5/8" IRON REBAR WITH MANGLED YELLOW PLASTIC CAP, FLUSH WITH GROUND.
- RRSPF 306 RAILROAD SPIKE FLUSH IN PAVED DRIVEWAY TO #2 EVERGREEN DRIVE.
- IRF 307 5/8" REBAR, 3" BELOW GROUND, IN FRONT OF #26 EVERGREEN DRIVE (NOT SHOWN).
- MF 308 PUNCHMARK IN ALUMINUM DISC LABELED "LAND USE CONSULTANTS RLS 1155" IN 6" BY 6" GRANITE MONUMENT, FLUSH IN LAWN IN FRONT OF #19-25 EVERGREEN DRIVE (NOT SHOWN).
- IPF 312 3/4" IRON PIPE, 5" BELOW LAWN IN FRONT OF #884 RIVERSIDE STREET (NOT SHOWN).
- CIRF 313 5/8" IRON REBAR WITH YELLOW MANGLED CAP, 2" TALL, BENT AWAY FROM THE ROAD, LOCATED AT BASE (NOT SHOWN).
- IRF 320 5/8" IRON REBAR, 6" LONG BUT BENT TO THE GROUND IN A SOUTHWESTERLY DIRECTION, LOCATED AT BASE, BETWEEN #980 AND #1000 RIVERSIDE STREET.
- IRF 321 5/8" IRON REBAR, 9" TALL, SLIGHT LEAN WESTERLY BUT STURDY, LOCATED AT TOP, BEHIND #980 RIVERSIDE.
- IPF 323 3/4" IRON PIPE, 16" BELOW GROUND, BENT IN A WESTERLY DIRECTION, LOCATED AT BASE.
- CIRF 324 5/8" IRON REBAR, 6" TALL, WITH PLASTIC CAP LABELED "LAND USE CONSULTANTS RLS 126(FOURTH NUMBER IS ILLEGIBLE)" (NOT SHOWN).
- IPF 325 3/4" IRON PIPE, 8" TALL, SLIGHT LEAN AWAY FROM RIVERSIDE STREET BUT STURDY, LOCATED AT TOP.
- CIRF 326 5/8" IRON REBAR WITH YELLOW PLASTIC CAP LABELED "PLS 1176", FLUSH IN LAWN AT #980 RIVERSIDE STREET.
- CIRF 327 5/8" IRON REBAR WITH YELLOW PLASTIC CAP LABELED "PLS 1176, 2" BELOW GROUND, BETWEEN #980 AND #1000 RIVERSIDE STREET.
- IRF 329 5/8" IRON REBAR FOUND, 9" TALL.
- IPF 330 1" IRON PIPE FOUND, 12" LONG, BENT SOUTHWESTERLY BUT STURDY, LOCATED AT BASE.

**MONUMENTATION SET**

- CIR5 700 5/8" IRON REBAR SET, FLUSH IN GRASS, WITH ALUMINUM CITY CAP, "PLS 2239".
- CIR5 701 5/8" IRON REBAR SET, 4" TALL, WITH ALUMINUM CITY CAP, "PLS 2239".
- CIR5 702 5/8" IRON REBAR SET, IN A STUMP, 2" BELOW TOP OF STUMP, WITH ALUMINUM CITY CAP, "PLS 2239".

REVISIONS:  
24 APR. 2012 - ADDED DESCRIPTIONS OF CAPPED IRON REBAR SET; REVISED LEGEND & FIELD BOOK REFERENCES.  
22 DEC. 2011 - ADDED STANDARD BOUNDARY SURVEY TO PLAN TITLE; ADDED IRON REBAR TO BE SET; ADDED SOME MONUMENTATION COORDINATES, TIES & OFFSETS TO STREETLINE; REVISED NOTE 7.

**REFERENCES:**

- VAULT PLANS:  
Civil 3D 2012 Drawing Name: "RiversideSouthGolfCourse2011\_CSD.dwg"  
TAX MAP 360  
STREET RECORDS BK 2 PG 386  
CITY PROPERTY PLAN BOOK SHEETS 132 & 238  
I & I SHEET 126  
CCRD 1997/1/14  
CMM ADJUSTMENT "RIVSGOLF"
- PROJECT FIELD BOOK:  
L 845 PP 28-54 T 151 PP 5-6  
OTHER FIELD BOOKS USED:  
SR 228 PG 155 TB 95 PG 122  
SR 228 PG 157 TB 95 PG 154  
SR 228 PG 158 TB 97 PG 154  
SR 228 PG 159 TB 97 PG 154  
SR 228 PG 160 TB 97 PG 154  
SR 228 PG 161 TB 97 PG 154  
SR 228 PG 162 TB 97 PG 154  
SR 228 PG 163 TB 97 PG 154  
SR 228 PG 164 TB 97 PG 154  
SR 228 PG 165 TB 97 PG 154  
SR 228 PG 166 TB 97 PG 154  
SR 228 PG 167 TB 97 PG 154  
SR 228 PG 168 TB 97 PG 154  
SR 228 PG 169 TB 97 PG 154  
SR 228 PG 170 TB 97 PG 154  
SR 228 PG 171 TB 97 PG 154  
SR 228 PG 172 TB 97 PG 154  
SR 228 PG 173 TB 97 PG 154  
SR 228 PG 174 TB 97 PG 154  
SR 228 PG 175 TB 97 PG 154  
SR 228 PG 176 TB 97 PG 154  
SR 228 PG 177 TB 97 PG 154  
SR 228 PG 178 TB 97 PG 154  
SR 228 PG 179 TB 97 PG 154  
SR 228 PG 180 TB 97 PG 154  
SR 228 PG 181 TB 97 PG 154  
SR 228 PG 182 TB 97 PG 154  
SR 228 PG 183 TB 97 PG 154  
SR 228 PG 184 TB 97 PG 154  
SR 228 PG 185 TB 97 PG 154  
SR 228 PG 186 TB 97 PG 154  
SR 228 PG 187 TB 97 PG 154  
SR 228 PG 188 TB 97 PG 154  
SR 228 PG 189 TB 97 PG 154  
SR 228 PG 190 TB 97 PG 154  
SR 228 PG 191 TB 97 PG 154  
SR 228 PG 192 TB 97 PG 154  
SR 228 PG 193 TB 97 PG 154  
SR 228 PG 194 TB 97 PG 154  
SR 228 PG 195 TB 97 PG 154  
SR 228 PG 196 TB 97 PG 154  
SR 228 PG 197 TB 97 PG 154  
SR 228 PG 198 TB 97 PG 154  
SR 228 PG 199 TB 97 PG 154  
SR 228 PG 200 TB 97 PG 154  
SR 228 PG 201 TB 97 PG 154  
SR 228 PG 202 TB 97 PG 154  
SR 228 PG 203 TB 97 PG 154  
SR 228 PG 204 TB 97 PG 154  
SR 228 PG 205 TB 97 PG 154  
SR 228 PG 206 TB 97 PG 154  
SR 228 PG 207 TB 97 PG 154  
SR 228 PG 208 TB 97 PG 154  
SR 228 PG 209 TB 97 PG 154  
SR 228 PG 210 TB 97 PG 154  
SR 228 PG 211 TB 97 PG 154  
SR 228 PG 212 TB 97 PG 154  
SR 228 PG 213 TB 97 PG 154  
SR 228 PG 214 TB 97 PG 154  
SR 228 PG 215 TB 97 PG 154  
SR 228 PG 216 TB 97 PG 154  
SR 228 PG 217 TB 97 PG 154  
SR 228 PG 218 TB 97 PG 154  
SR 228 PG 219 TB 97 PG 154  
SR 228 PG 220 TB 97 PG 154  
SR 228 PG 221 TB 97 PG 154  
SR 228 PG 222 TB 97 PG 154  
SR 228 PG 223 TB 97 PG 154  
SR 228 PG 224 TB 97 PG 154  
SR 228 PG 225 TB 97 PG 154  
SR 228 PG 226 TB 97 PG 154  
SR 228 PG 227 TB 97 PG 154  
SR 228 PG 228 TB 97 PG 154  
SR 228 PG 229 TB 97 PG 154  
SR 228 PG 230 TB 97 PG 154  
SR 228 PG 231 TB 97 PG 154  
SR 228 PG 232 TB 97 PG 154  
SR 228 PG 233 TB 97 PG 154  
SR 228 PG 234 TB 97 PG 154  
SR 228 PG 235 TB 97 PG 154  
SR 228 PG 236 TB 97 PG 154  
SR 228 PG 237 TB 97 PG 154  
SR 228 PG 238 TB 97 PG 154  
SR 228 PG 239 TB 97 PG 154  
SR 228 PG 240 TB 97 PG 154  
SR 228 PG 241 TB 97 PG 154  
SR 228 PG 242 TB 97 PG 154  
SR 228 PG 243 TB 97 PG 154  
SR 228 PG 244 TB 97 PG 154  
SR 228 PG 245 TB 97 PG 154  
SR 228 PG 246 TB 97 PG 154  
SR 228 PG 247 TB 97 PG 154  
SR 228 PG 248 TB 97 PG 154  
SR 228 PG 249 TB 97 PG 154  
SR 228 PG 250 TB 97 PG 154  
SR 228 PG 251 TB 97 PG 154  
SR 228 PG 252 TB 97 PG 154  
SR 228 PG 253 TB 97 PG 154  
SR 228 PG 254 TB 97 PG 154  
SR 228 PG 255 TB 97 PG 154  
SR 228 PG 256 TB 97 PG 154  
SR 228 PG 257 TB 97 PG 154  
SR 228 PG 258 TB 97 PG 154  
SR 228 PG 259 TB 97 PG 154  
SR 228 PG 260 TB 97 PG 154  
SR 228 PG 261 TB 97 PG 154  
SR 228 PG 262 TB 97 PG 154  
SR 228 PG 263 TB 97 PG 154  
SR 228 PG 264 TB 97 PG 154  
SR 228 PG 265 TB 97 PG 154  
SR 228 PG 266 TB 97 PG 154  
SR 228 PG 267 TB 97 PG 154  
SR 228 PG 268 TB 97 PG 154  
SR 228 PG 269 TB 97 PG 154  
SR 228 PG 270 TB 97 PG 154  
SR 228 PG 271 TB 97 PG 154  
SR 228 PG 272 TB 97 PG 154  
SR 228 PG 273 TB 97 PG 154  
SR 228 PG 274 TB 97 PG 154  
SR 228 PG 275 TB 97 PG 154  
SR 228 PG 276 TB 97 PG 154  
SR 228 PG 277 TB 97 PG 154  
SR 228 PG 278 TB 97 PG 154  
SR 228 PG 279 TB 97 PG 154  
SR 228 PG 280 TB 97 PG 154  
SR 228 PG 281 TB 97 PG 154  
SR 228 PG 282 TB 97 PG 154  
SR 228 PG 283 TB 97 PG 154  
SR 228 PG 284 TB 97 PG 154  
SR 228 PG 285 TB 97 PG 154  
SR 228 PG 286 TB 97 PG 154  
SR 228 PG 287 TB 97 PG 154  
SR 228 PG 288 TB 97 PG 154  
SR 228 PG 289 TB 97 PG 154  
SR 228 PG 290 TB 97 PG 154  
SR 228 PG 291 TB 97 PG 154  
SR 228 PG 292 TB 97 PG 154  
SR 228 PG 293 TB 97 PG 154  
SR 228 PG 294 TB 97 PG 154  
SR 228 PG 295 TB 97 PG 154  
SR 228 PG 296 TB 97 PG 154  
SR 228 PG 297 TB 97 PG 154  
SR 228 PG 298 TB 97 PG 154  
SR 228 PG 299 TB 97 PG 154  
SR 228 PG 300 TB 97 PG 154  
SR 228 PG 301 TB 97 PG 154  
SR 228 PG 302 TB 97 PG 154  
SR 228 PG 303 TB 97 PG 154  
SR 228 PG 304 TB 97 PG 154  
SR 228 PG 305 TB 97 PG 154  
SR 228 PG 306 TB 97 PG 154  
SR 228 PG 307 TB 97 PG 154  
SR 228 PG 308 TB 97 PG 154  
SR 228 PG 309 TB 97 PG 154  
SR 228 PG 310 TB 97 PG 154  
SR 228 PG 311 TB 97 PG 154  
SR 228 PG 312 TB 97 PG 154  
SR 228 PG 313 TB 97 PG 154  
SR 228 PG 314 TB 97 PG 154  
SR 228 PG 315 TB 97 PG 154  
SR 228 PG 316 TB 97 PG 154  
SR 228 PG 317 TB 97 PG 154  
SR 228 PG 318 TB 97 PG 154  
SR 228 PG 319 TB 97 PG 154  
SR 228 PG 320 TB 97 PG 154  
SR 228 PG 321 TB 97 PG 154  
SR 228 PG 322 TB 97 PG 154  
SR 228 PG 323 TB 97 PG 154  
SR 228 PG 324 TB 97 PG 154  
SR 228 PG 325 TB 97 PG 154  
SR 228 PG 326 TB 97 PG 154  
SR 228 PG 327 TB 97 PG 154  
SR 228 PG 328 TB 97 PG 154  
SR 228 PG 329 TB 97 PG 154  
SR 228 PG 330 TB 97 PG 154  
SR 228 PG 331 TB 97 PG 154  
SR 228 PG 332 TB 97 PG 154  
SR 228 PG 333 TB 97 PG 154  
SR 228 PG 334 TB 97 PG 154  
SR 228 PG 335 TB 97 PG 154  
SR 228 PG 336 TB 97 PG 154  
SR 228 PG 337 TB 97 PG 154  
SR 228 PG 338 TB 97 PG 154  
SR 228 PG 339 TB 97 PG 154  
SR 228 PG 340 TB 97 PG 154  
SR 228 PG 341 TB 97 PG 154  
SR 228 PG 342 TB 97 PG 154  
SR 228 PG 343 TB 97 PG 154  
SR 228 PG 344 TB 97 PG 154  
SR 228 PG 345 TB 97 PG 154  
SR 228 PG 346 TB 97 PG 154  
SR 228 PG 347 TB 97 PG 154  
SR 228 PG 348 TB 97 PG 154  
SR 228 PG 349 TB 97 PG 154  
SR 228 PG 350 TB 97 PG 154  
SR 228 PG 351 TB 97 PG 154  
SR 228 PG 352 TB 97 PG 154  
SR 228 PG 353 TB 97 PG 154  
SR 228 PG 354 TB 97 PG 154  
SR 228 PG 355 TB 97 PG 154  
SR 228 PG 356 TB 97 PG 154  
SR 228 PG 357 TB 97 PG 154  
SR 228 PG 358 TB 97 PG 154  
SR 228 PG 359 TB 97 PG 154  
SR 228 PG 360 TB 97 PG 154  
SR 228 PG 361 TB 97 PG 154  
SR 228 PG 362 TB 97 PG 154  
SR 228 PG 363 TB 97 PG 154  
SR 228 PG 364 TB 97 PG 154  
SR 228 PG 365 TB 97 PG 154  
SR 228 PG 366 TB 97 PG 154  
SR 228 PG 367 TB 97 PG 154  
SR 228 PG 368 TB 97 PG 154  
SR 228 PG 369 TB 97 PG 154  
SR 228 PG 370 TB 97 PG 154  
SR 228 PG 371 TB 97 PG 154  
SR 228 PG 372 TB 97 PG 154  
SR 228 PG 373 TB 97 PG 154  
SR 228 PG 374 TB 97 PG 154  
SR 228 PG 375 TB 97 PG 154  
SR 228 PG 376 TB 97 PG 154  
SR 228 PG 377 TB 97 PG 154  
SR 228 PG 378 TB 97 PG 154  
SR 228 PG 379 TB 97 PG 154  
SR 228 PG 380 TB 97 PG 154  
SR 228 PG 381 TB 97 PG 154  
SR 228 PG 382 TB 97 PG 154  
SR 228 PG 383 TB 97 PG 154  
SR 228 PG 384 TB 97 PG 154  
SR 228 PG 385 TB 97 PG 154  
SR 228 PG 386 TB 97 PG 154  
SR 228 PG 387 TB 97 PG 154  
SR 228 PG 388 TB 97 PG 154  
SR 228 PG 389 TB 97 PG 154  
SR 228 PG 390 TB 97 PG 154  
SR 228 PG 391 TB 97 PG 154  
SR 228 PG 392 TB 97 PG 154  
SR 228 PG 393 TB 97 PG 154  
SR 228 PG 394 TB 97 PG 154  
SR 228 PG 395 TB 97 PG 154  
SR 228 PG 396 TB 97 PG 154  
SR 228 PG 397 TB 97 PG 154  
SR 228 PG 398 TB 97 PG 154  
SR 228 PG 399 TB 97 PG 154  
SR 228 PG 400 TB 97 PG 154  
SR 228 PG 401 TB 97 PG 154  
SR 228 PG 402 TB 97 PG 154  
SR 228 PG 403 TB 97 PG 154  
SR 228 PG 404 TB 97 PG 154  
SR 228 PG 405 TB 97 PG 154  
SR 228 PG 406 TB 97 PG 154  
SR 228 PG 407 TB 97 PG 154  
SR 228 PG 408 TB 97 PG 154  
SR 228 PG 409 TB 97 PG 154  
SR 228 PG 410 TB 97 PG 154  
SR 228 PG 411 TB 97 PG 154  
SR 228 PG 412 TB 97 PG 154  
SR 228 PG 413 TB 97 PG 154  
SR 228 PG 414 TB 97 PG 154  
SR 228 PG 415 TB 97 PG 154  
SR 228 PG 416 TB 97 PG 154  
SR 228 PG 417 TB 97 PG 154  
SR 228 PG 418 TB 97 PG 154  
SR 228 PG 419 TB 97 PG 154  
SR 228 PG 420 TB 97 PG 154  
SR 228 PG 421 TB 97 PG 154  
SR 228 PG 422 TB 97 PG 154  
SR 228 PG 423 TB 97 PG 154  
SR 228 PG 424 TB 97 PG 154  
SR 228 PG 425 TB 97 PG 154  
SR 228 PG 426 TB 97 PG 154  
SR 228 PG 427 TB 97 PG 154  
SR 228 PG 428 TB 97 PG 154  
SR 228 PG 429 TB 97 PG 154  
SR 228 PG 430 TB 97 PG 154  
SR 228 PG 431 TB 97 PG 154  
SR 228 PG 432 TB 97 PG 154  
SR 228 PG 433 TB 97 PG 154  
SR 228 PG 434 TB 97 PG 154  
SR 228 PG 435 TB 97 PG 154  
SR 228 PG 436 TB 97 PG 154  
SR 228 PG 437 TB 97 PG 154  
SR 228 PG 438 TB 97 PG 154  
SR 228 PG 439 TB 97 PG 154  
SR 228 PG 440 TB 97 PG 154  
SR 228 PG 441 TB 97 PG 154  
SR 228 PG 442 TB 97 PG 154  
SR 228 PG 443 TB 97 PG 154  
SR 228 PG 444 TB 97 PG 154  
SR 228 PG 445 TB 97 PG 154  
SR 228 PG 446 TB 97 PG 154  
SR 228 PG 447 TB 97 PG 154  
SR 228 PG 448 TB 97 PG 154  
SR 228 PG 449 TB 97 PG 154  
SR 228 PG 450 TB 97 PG 154  
SR 228 PG 451 TB 97 PG 154  
SR 228 PG 452 TB 97 PG 154  
SR 228 PG 453 TB 97 PG 154  
SR 228 PG 454 TB 97 PG 154  
SR 228 PG 455 TB 97 PG 154  
SR 228 PG 456 TB 97 PG 154  
SR 228 PG 457 TB 97 PG 154  
SR 228 PG 458 TB 97 PG 154  
SR 228 PG 459 TB 97 PG 154  
SR 228 PG 460 TB 97 PG 154  
SR 228 PG 461 TB 97 PG 154  
SR 228 PG 462 TB 97 PG 154  
SR 228 PG 463 TB 97 PG 154  
SR 228 PG 464 TB 97 PG 154  
SR 228 PG 465 TB 97 PG 154  
SR 228 PG 466 TB 97 PG 154  
SR 228 PG 467 TB 97 PG 154  
SR 228 PG 468 TB 97 PG 154  
SR 228 PG 469 TB 97 PG 154  
SR 228 PG 470 TB 97 PG 154  
SR 228 PG 471 TB 97 PG 154  
SR 228 PG 472 TB 97 PG 154  
SR 228 PG 473 TB 97 PG 154  
SR 228 PG 474 TB 97 PG 154  
SR 228 PG 475 TB 97 PG 154  
SR 228 PG 476 TB 97 PG 154  
SR 228 PG 477 TB 97 PG 154  
SR 228 PG 478 TB 97 PG 154  
SR 228 PG 479 TB 97 PG 154  
SR 228 PG 480 TB 97 PG 154  
SR 228 PG 481 TB 97 PG 154  
SR 228 PG 482 TB 97 PG 154  
SR 228 PG 483 TB 97 PG 154  
SR 228 PG 484 TB 97 PG 154  
SR 228 PG 485 TB 97 PG 154  
SR 228 PG 486 TB 97 PG 154  
SR 228 PG 487 TB 97 PG 154  
SR 228 PG 488 TB 97 PG 154  
SR 228 PG 489 TB 97 PG 154  
SR 228 PG 490 TB 97 PG 154  
SR 228 PG 491 TB 97 PG 154  
SR 228 PG 492 TB 97 PG 154  
SR 228 PG 493 TB 97 PG 154  
SR 228 PG 494 TB 97 PG 154  
SR 228 PG 495 TB 97 PG 154  
SR 228 PG 496 TB 97 PG 154  
SR 228 PG 497 TB 97 PG 154  
SR 228 PG 498 TB 97 PG 154  
SR 228 PG 499 TB 97 PG 154  
SR 228 PG 500 TB 97 PG 154  
SR 228 PG 501 TB 97 PG 154  
SR 228 PG 502 TB 97 PG 154  
SR 228 PG 503 TB 97 PG 154  
SR 228 PG 504 TB 97 PG 154  
SR 228 PG 505 TB 97 PG 154  
SR 228 PG 506 TB 97 PG 154  
SR 228 PG 507 TB 97 PG 154  
SR 228 PG 508 TB 97 PG 154  
SR 228 PG 509 TB 97 PG 154  
SR 228 PG 510 TB 97 PG 154  
SR 228 PG 511 TB 97 PG 154  
SR 228 PG 512 TB 97 PG 154  
SR 228 PG 513 TB 97 PG 154  
SR 228 PG 514 TB 97 PG 154  
SR 228 PG 515 TB 97 PG 154  
SR 228 PG 516 TB 97 PG 154  
SR 228 PG 517 TB 97 PG 154  
SR 228 PG 518 TB 97 PG 154  
SR 228 PG 519 TB 97 PG 154  
SR 228 PG 520 TB 97 PG 154  
SR 228 PG 521 TB 97 PG 154  
SR 228 PG 522 TB 97 PG 154  
SR 228 PG 523 TB 97 PG 154  
SR 228 PG 524 TB 97 PG 154  
SR 228 PG 525 TB 97 PG 154  
SR 228 PG 526 TB 97 PG 154  
SR 228 PG 527 TB 97 PG 154  
SR 228 PG 528 TB 97 PG 154  
SR 228 PG 529 TB 97 PG 154  
SR 228 PG 530 TB 97 PG 154  
SR 228 PG 531 TB 97 PG 154  
SR 228 PG 532 TB 97 PG 154  
SR 228 PG 533 TB 97 PG 154  
SR 228 PG 534 TB 97 PG 154  
SR 228 PG 535 TB 97 PG 154  
SR 228 PG 536 TB 97 PG 154  
SR 228 PG 537 TB 97 PG 154  
SR 228 PG 538 TB 97 PG 154  
SR 228 PG 539 TB 97 PG 154  
SR 228 PG 540 TB 97 PG 154  
SR 228 PG 541 TB 97 PG 154  
SR 228 PG 542 TB 97 PG 154  
SR 228 PG 543 TB 97 PG 154  
SR 228 PG 544 TB 97 PG 154  
SR 228 PG 545 TB 97 PG 154  
SR 228 PG 546 TB 97 PG 154  
SR 228 PG 547 TB 97 PG 154  
SR 228 PG 548 TB 97 PG 154  
SR 228 PG 549 TB 97 PG 154  
SR 228 PG 550 TB 97 PG 154  
SR 228 PG 551 TB 97 PG 154  
SR 228 PG 552 TB 97 PG 154  
SR 228 PG 553 TB 97 PG 154  
SR 228 PG 554 TB 97 PG 154  
SR 228 PG 555 TB 97 PG 154  
SR 228 PG 556 TB 97 PG 154  
SR 228 PG 557 TB 97 PG 154  
SR 228 PG 558 TB 97 PG 154  
SR 228 PG 559 TB 97 PG 154  
SR 228 PG 560 TB 97 PG 154  
SR 228 PG 561 TB 97 PG 154  
SR 228 PG 562 TB 97 PG 154  
SR 228 PG 563 TB 97 PG 154  
SR 228 PG 564 TB 97 PG 154  
SR 228 PG 565 TB 97 PG 154  
SR 228 PG 566 TB 97 PG 154  
SR 228 PG 567 TB 97 PG 154  
SR 228 PG 568 TB 97 PG 154  
SR 228 PG 569 TB 97 PG 154  
SR 228 PG 570 TB 97 PG 154  
SR 228 PG 571 TB 97 PG 154  
SR 228 PG 572 TB 97 PG 154  
SR 228 PG 573 TB 97 PG 154  
SR 228 PG 574 TB 97 PG 154  
SR 228 PG 575 TB 97 PG 154  
SR 228 PG 576 TB 97 PG 154  
SR 228 PG 577 TB 97 PG 154  
SR 228 PG 578 TB 97 PG 154  
SR 228 PG 579 TB 97 PG 154  
SR 228 PG 580 TB 97 PG 154  
SR 228 PG 581 TB 97 PG 154  
SR 228 PG 582 TB 97 PG 154  
SR 228 PG 583 TB 97 PG 154  
SR 228 PG 584 TB 97 PG 154  
SR 228 PG 585 TB 97 PG 154  
SR 228 PG 586 TB 97 PG 154  
SR 228 PG 587 TB 97 PG 154  
SR 228 PG 588 TB 97 PG 154  
SR 228 PG 589 TB 97 PG 154  
SR 228 PG 590 TB 97 PG 154  
SR 228 PG 591 TB 97 PG 154  
SR 228 PG 592 TB 97 PG 154  
SR 228 PG 593 TB 97 PG 154  
SR 228 PG 594 TB 97 PG 154  
SR 228 PG 595 TB 97 PG 154