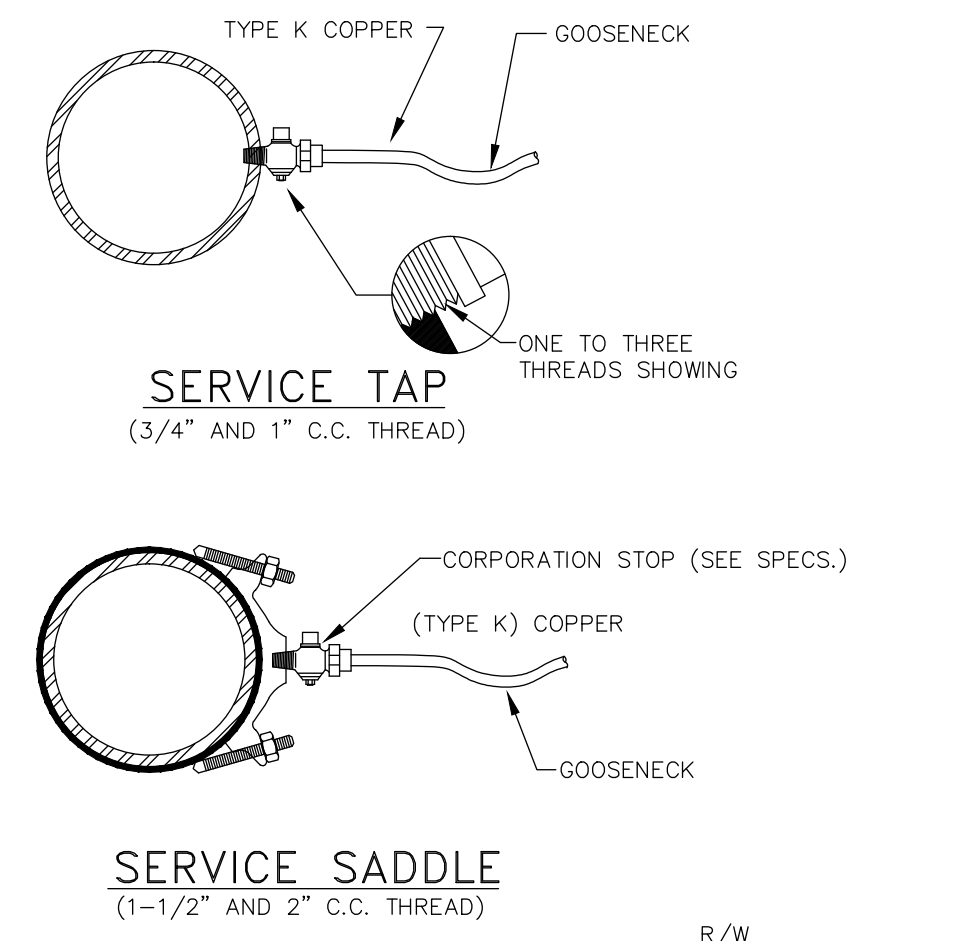


SERVICE BOX
N.T.S.

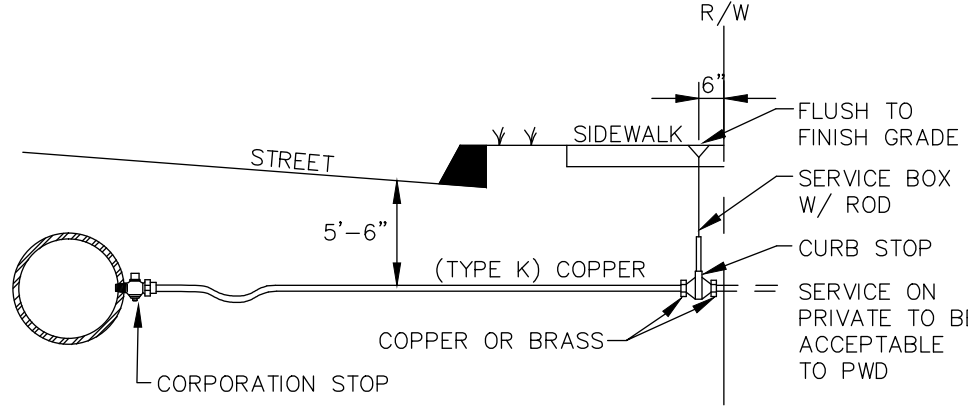
FOOT PIECE
N.T.S.

NOTE: ANY EXTENSION OF SERVICE BOX REQUIRES:
1) 1" FEMALE IRON PIPE COUPLING
2) 1" THREADED PIPE
(THIS IS TO BE A NON-WELDED, TWO PIECE ARRANGEMENT. SLIP ON ADAPTERS ARE NOT PERMISSIBLE.)



SERVICE TAP
(3/4" AND 1" C.C. THREAD)

SERVICE SADDLE
(1-1/2" AND 1" C.C. THREAD)

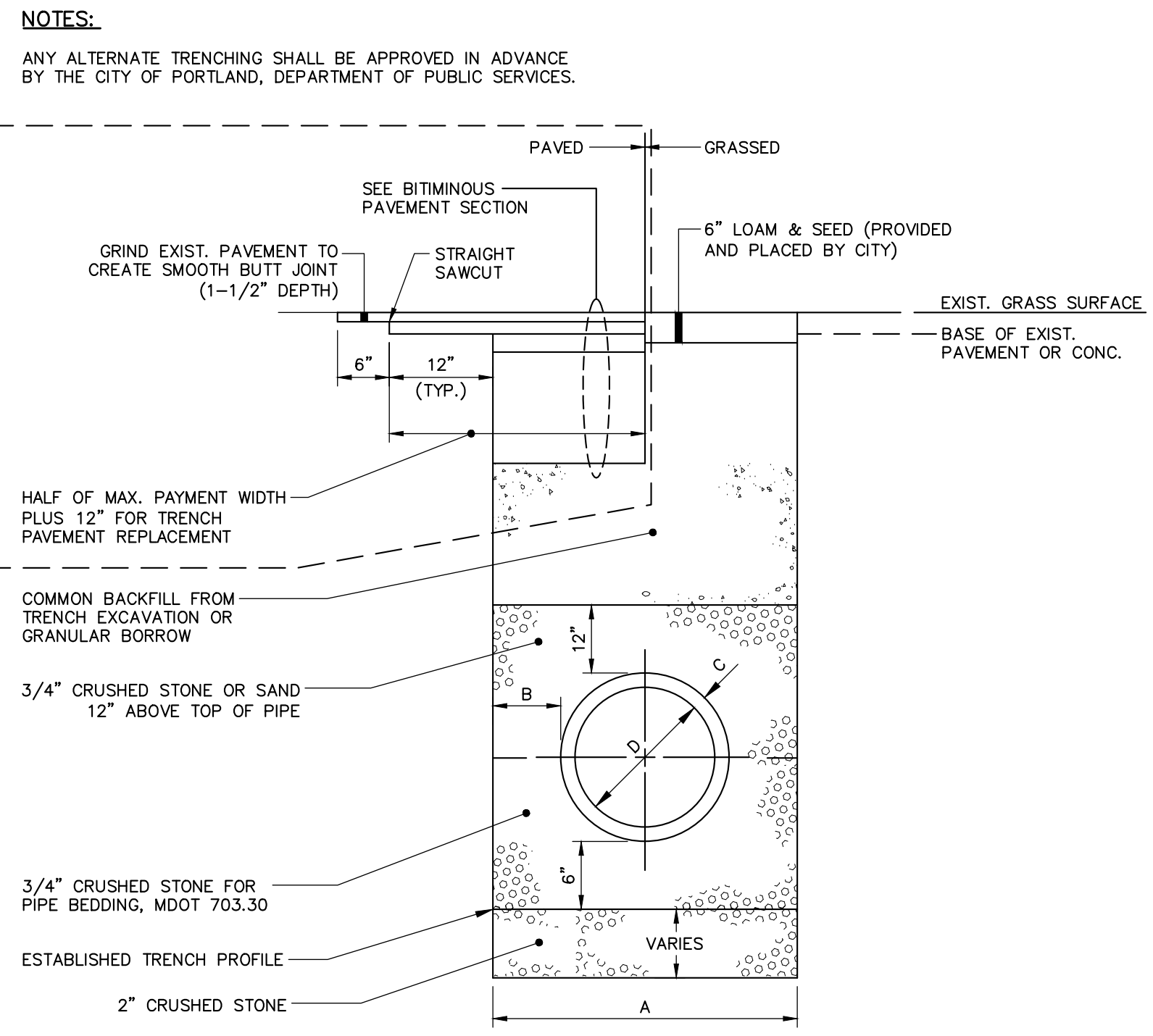


TYPICAL SERVICE CONNECTION
N.T.S.

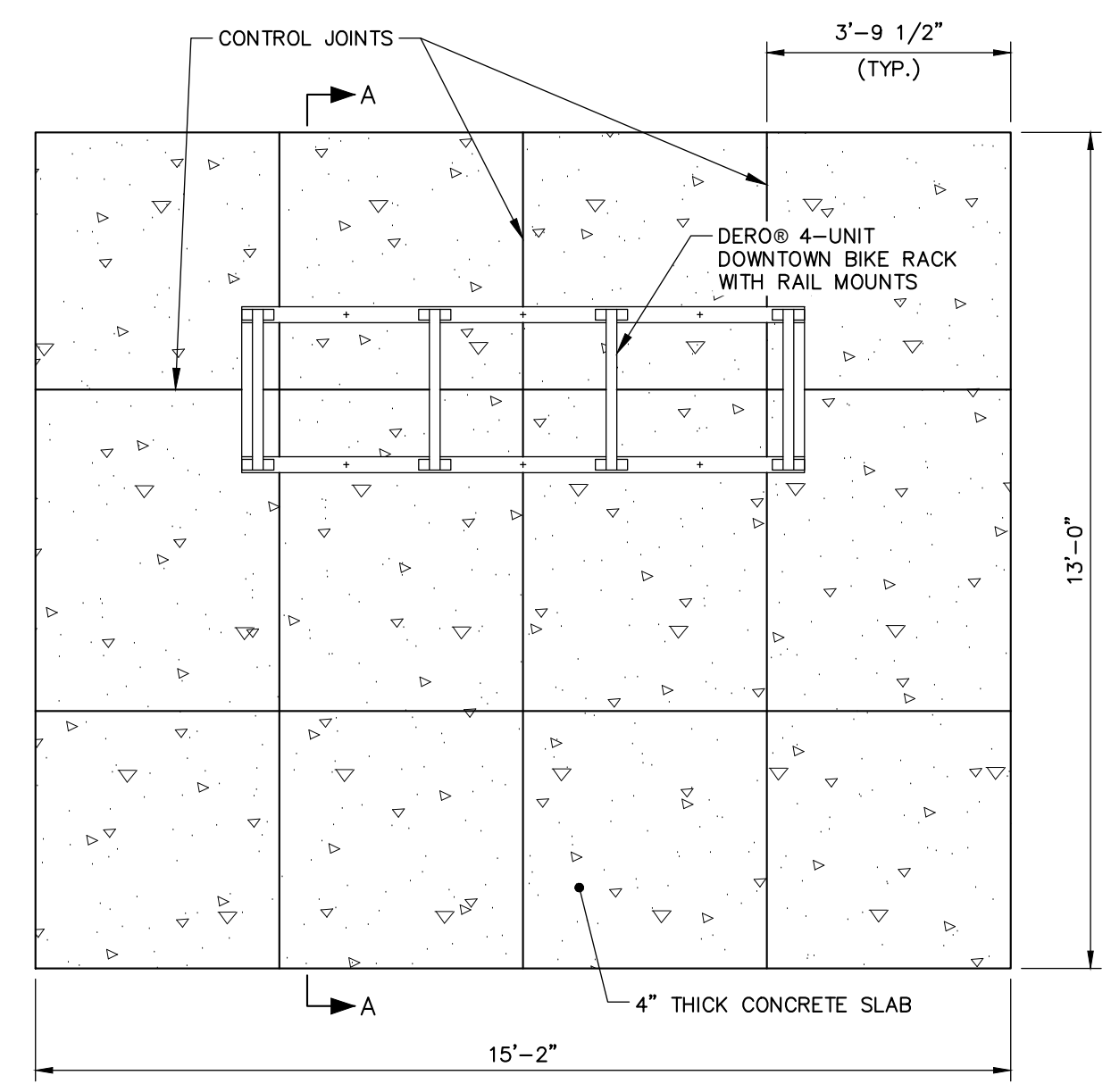
PIPE INSTALLATION DETAIL - NOTES

- ALTERNATIVE CONSTRUCTION METHODS OR PAYMENT METHODS SHALL BE APPROVED IN ADVANCE.
- IN PAVED AREAS, DEPTHS OF GRAVEL AND HOT MIX ASPHALT PAVEMENT SHALL MATCH THE GREATER OF EXISTING CONDITIONS OR THE REQUIREMENTS FOR THE CORRESPONDING STREET CLASSIFICATION.
- DIMENSION "B" SHALL BE SUFFICIENT TO ALLOW CRUSHED STONE BEDDING TO BE PLACED AND COMPACTED UNDER THE HAUNCHES OF THE PIPE, BUT IN ALL CASES "B" SHALL BE AT LEAST 9".
- DIMENSION "A" SHALL BE BASED ON PIPE DIAMETER, AS SET FORTH IN THE FOLLOWING TABLE.

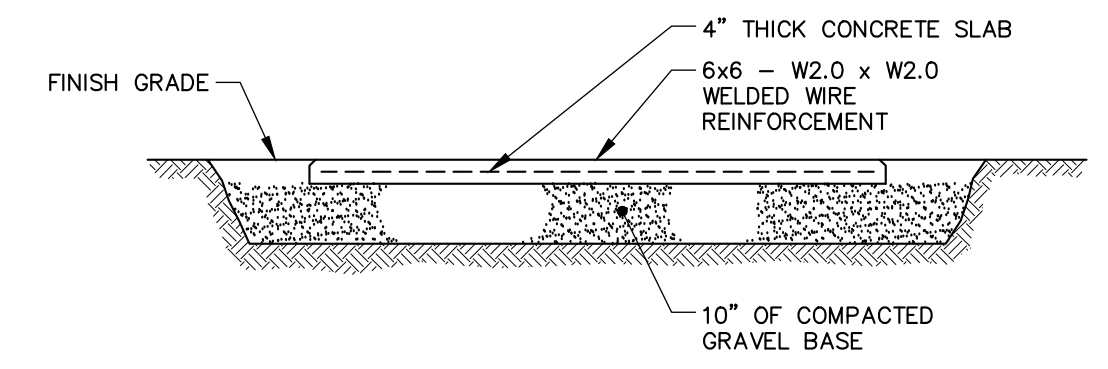
PIPE DIAMETER, "D" (INCHES)	MAX. TRENCH WIDTH, "A" (FEET)
1	2.0
6	4.0
8	4.0
10	4.0
12	4.0
15	4.0
18	5.0
21	5.0
24	5.5
27	6.0
30	6.0
36	7.0
42	8.0
48	8.0



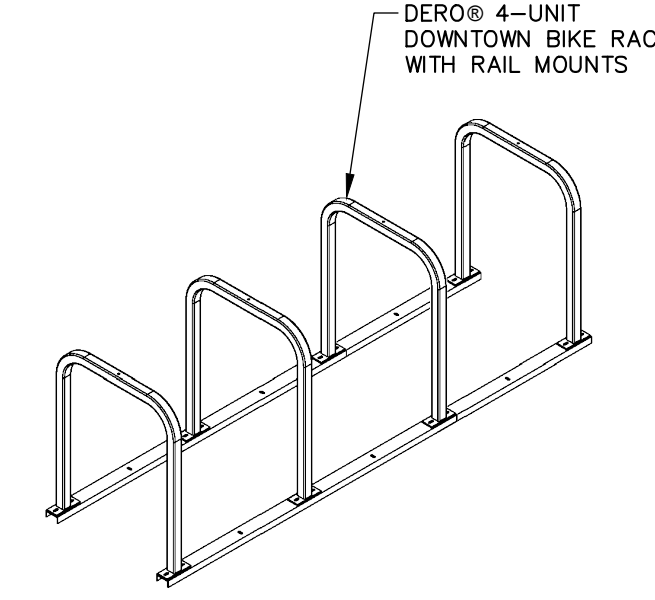
PIPE INSTALLATION DETAIL
N.T.S.



PLAN



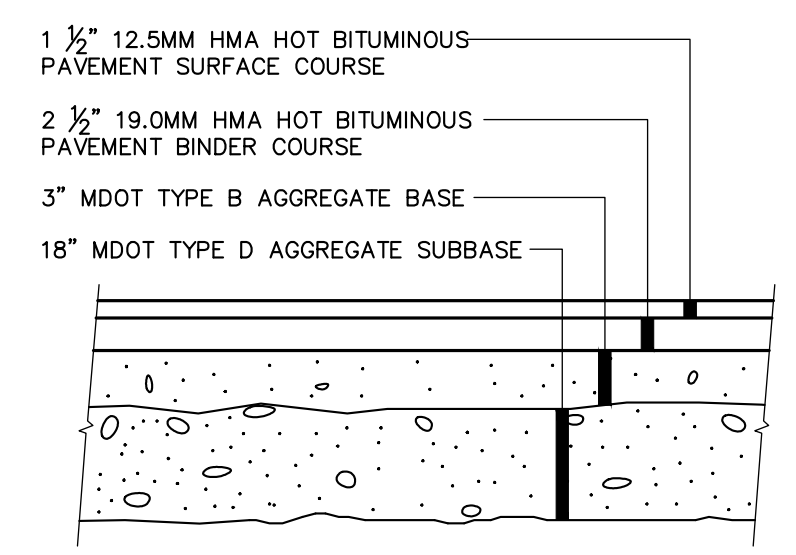
SECTION A-A



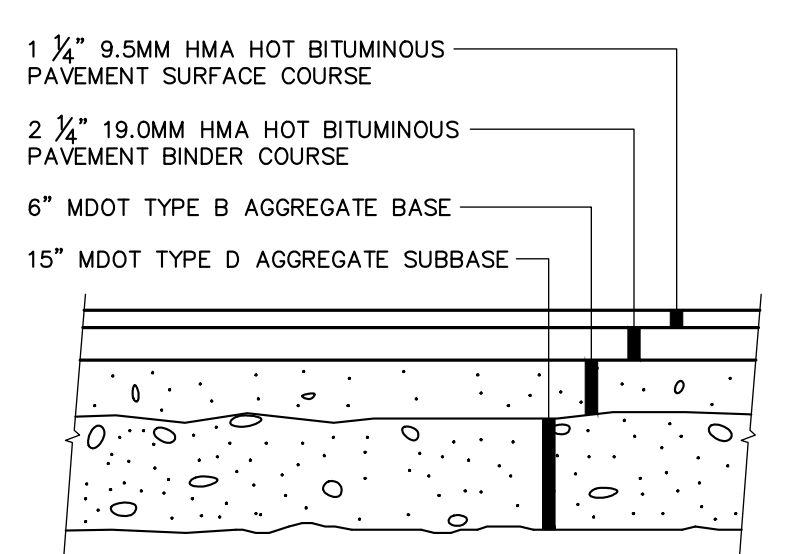
BIKE RACK

- NOTES:**
- PROVIDE A DERO® 4-UNIT DOWNTOWN BIKE RACK WITH RAIL MOUNTS. BIKE RACKS AND RAILS SHALL BE HOT-DIP GALVANIZED.
 - CONCRETE SLAB SHALL BE 4 INCHES THICK (MIN.) PLACED ON A 10 INCH THICK COMPACTED GRAVEL BASE. USE 4,500 PSI (MIN.) CONCRETE MIX. USE EDGING TOOL TO RADIUS EDGES AND SCORE JOINTS AS SHOWN. FINISH CONCRETE WITH A LIGHTLY BROOMED SURFACE.
 - DRILL CONCRETE SLAB AND ATTACH BIKE RACK RAILS WITH 3/16"x4" GALV. WEDGE ANCHOR BOLTS PER MANUFACTURER'S INSTRUCTIONS.

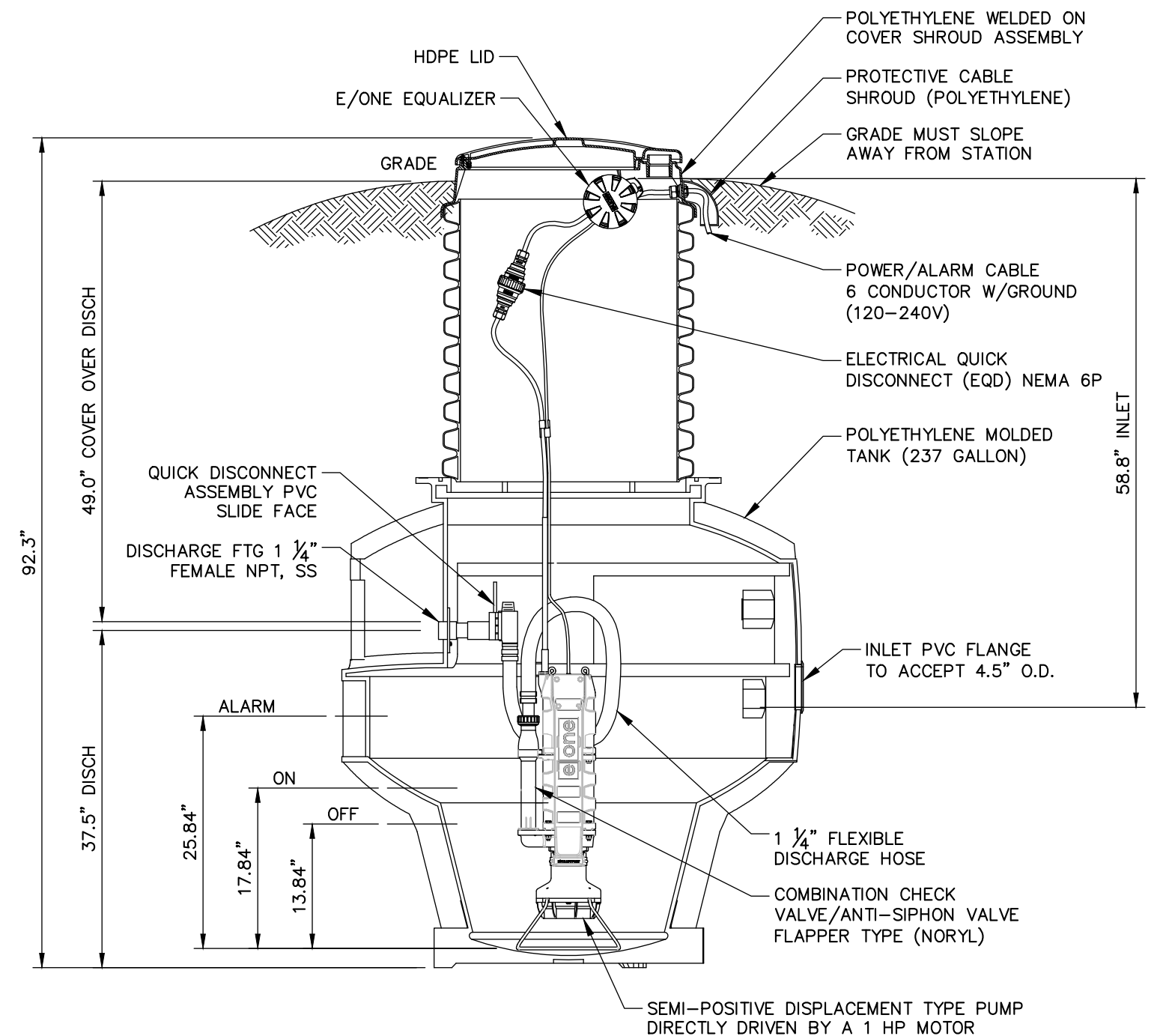
DERO 3-UNIT DOWNTOWN BIKE RACK AND CONCRETE PAD DETAIL
N.T.S.



BITUMINOUS PAVEMENT SECTION - RIVERSIDE STREET
N.T.S.

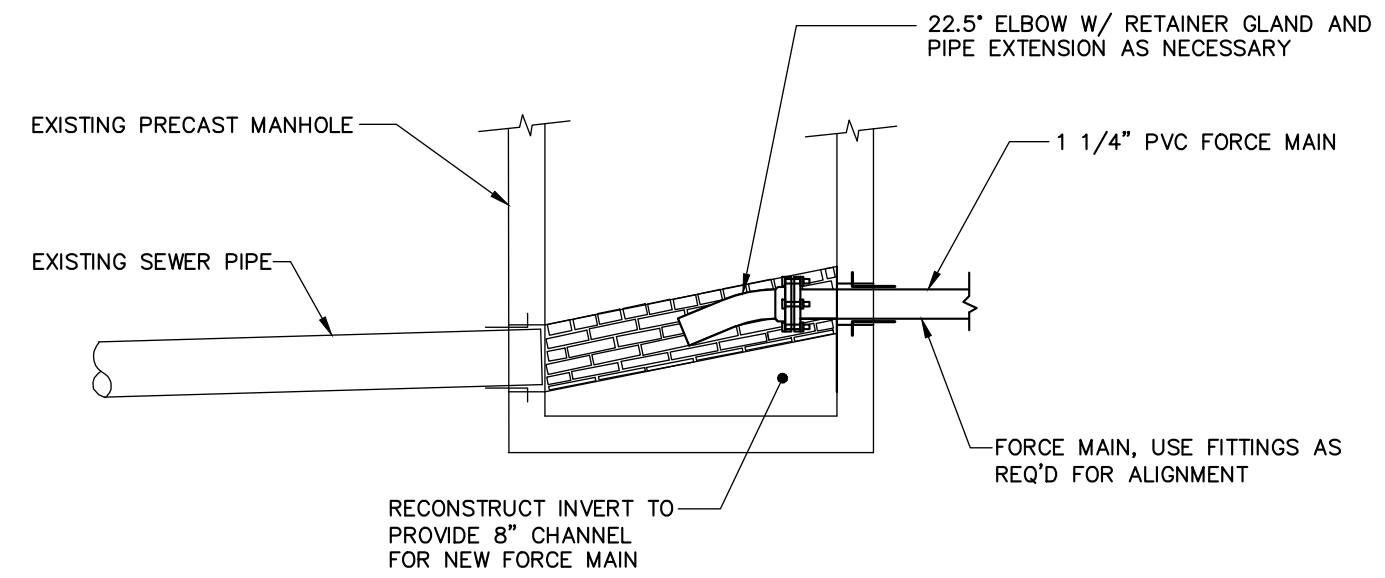


BITUMINOUS PAVEMENT SECTION - PARKING LOT
N.T.S.



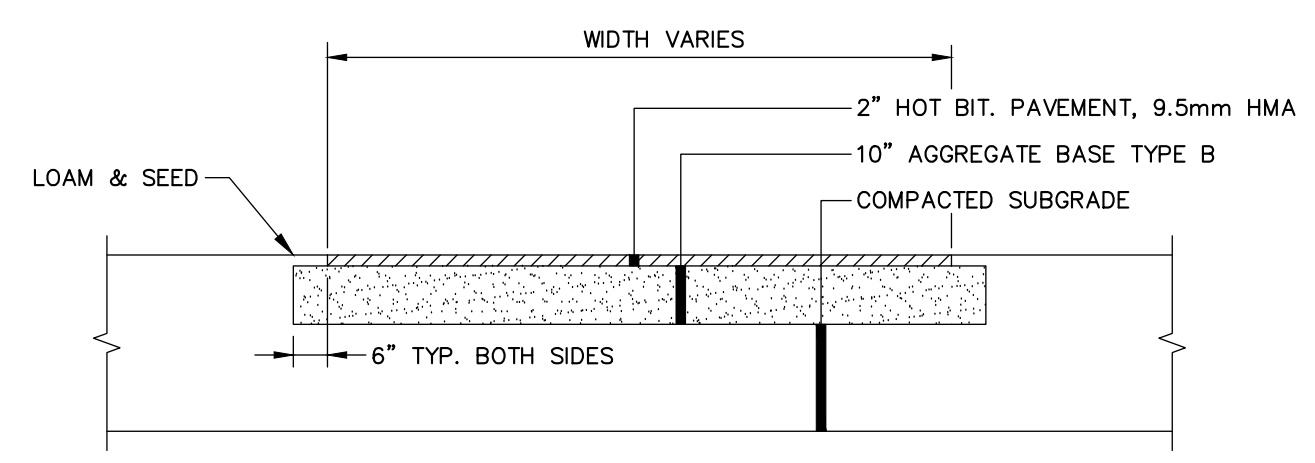
- NOTES:**
- PUMP SHALL BE MODEL WH231-92 BY E/ONE SEWER SYSTEMS OR APPROVED EQUAL.
 - GRADE SHALL BE SLOPED AWAY FROM PUMP STATION LID.
 - CONTRACTOR SHALL PROVIDE CONCRETE ANTI-FLOATATION DEVICE AS NECESSARY. ANTI-FLOATATION DESIGN SHALL BE COMPLETED AS RECOMMENDED BY MANUFACTURER AND SHALL BE STAMPED BY A PROFESSIONAL ENGINEER.

SEWER PUMP DETAIL
N.T.S.



FORCE MAIN DISCHARGE MANHOLE
N.T.S.

- NOTES:**
- THE EXISTING SANITARY SEWER MANHOLE AT THE INTERSECTION OF RIVERSIDE STREET AND EVERGREEN DRIVE SHALL BE CORE DRILLED TO MAKE THE NEW SEWER FORCEMAIN CONNECTION TO THE PUBLIC SEWER SYSTEM.
 - A 22.5 DEGREE BEND SHALL BE PROVIDED INSIDE THE MANHOLE AT THE FORCEMAIN TERMINUS TO DIRECT FLOW FROM THE FORCEMAIN DOWN AND INTO THE EXISTING SEWER LEAVING THE MANHOLE.
 - ALL CONSTRUCTION DETAILS OF THE FORCEMAIN CONNECTION TO THE MANHOLE SHALL BE SUBJECT TO REVIEW AND APPROVAL BY THE CITY OF PORTLAND WASTEWATER DIVISION. CONTACT JOHN EMERSON (318-1239) TO COORDINATE REVIEW AND APPROVAL OF THE PROPOSED CONNECTION DETAILS AND TO ARRANGE FOR INSPECTION OF THIS WORK.



BITUMINOUS SIDEWALK DETAIL
N.T.S.

- NOTE:**
- AGGREGATE TYPES PER MDOT SECTION 304.02

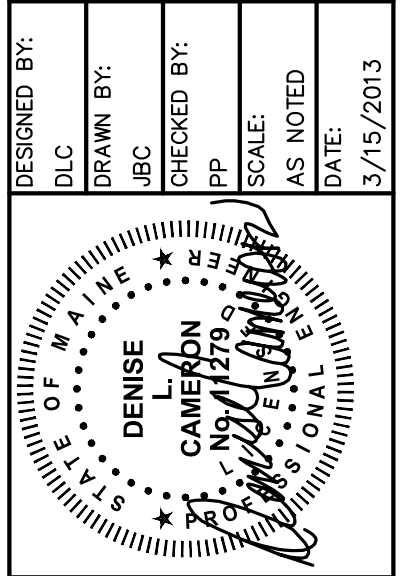
41 HUTCHINS DRIVE
PORTLAND, MAINE 04102
800.426.4262 | www.woodardcurran.com



COMMITMENT & INTEGRITY DRIVE RESULTS

LDD PROJECT NAME:
N/A
DRAWING NAME:
222804.77 C200A.DWG
FIELD BOOK USED:
N/A

DESIGNED BY:
DLC
DRAWN BY:
JBC
CHECKED BY:
JPP
SCALE:
AS NOTED
DATE:
3/15/2013



RIVERSIDE SOUTH
GOLF COURSE PRO SHOP

CITY OF PORTLAND, MAINE
RECREATION AND FACILITIES
MANAGEMENT DEPARTMENT



SHEET #
C003
PLAN NUMBER

\\PORTLAND\Projects\222804.77 Riverside South - Civil Services\Wip\77 Riverside South - CC ProShop Drawings\222804.77 C200A.dwg, Mar 22, 2013 - 12:54pm