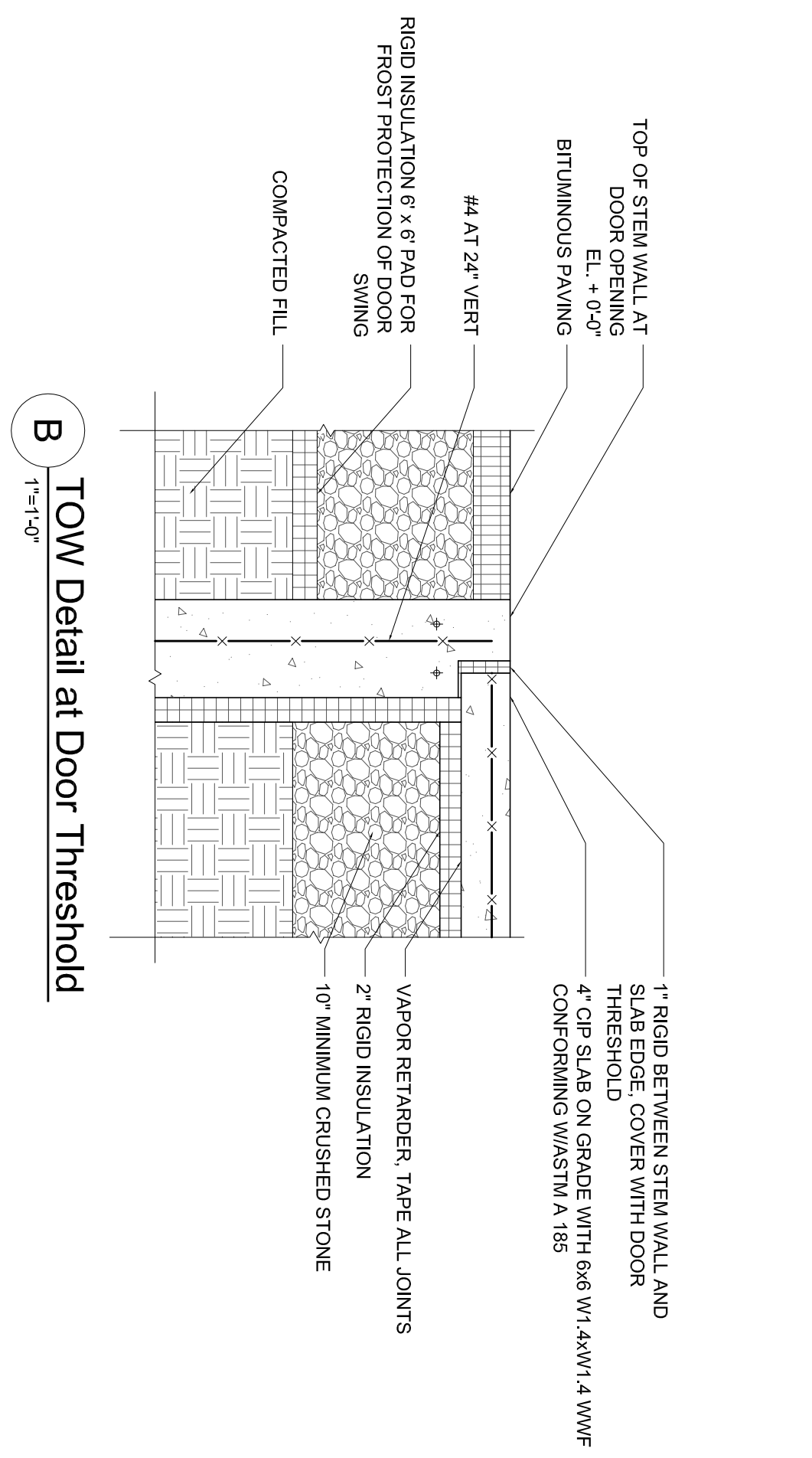
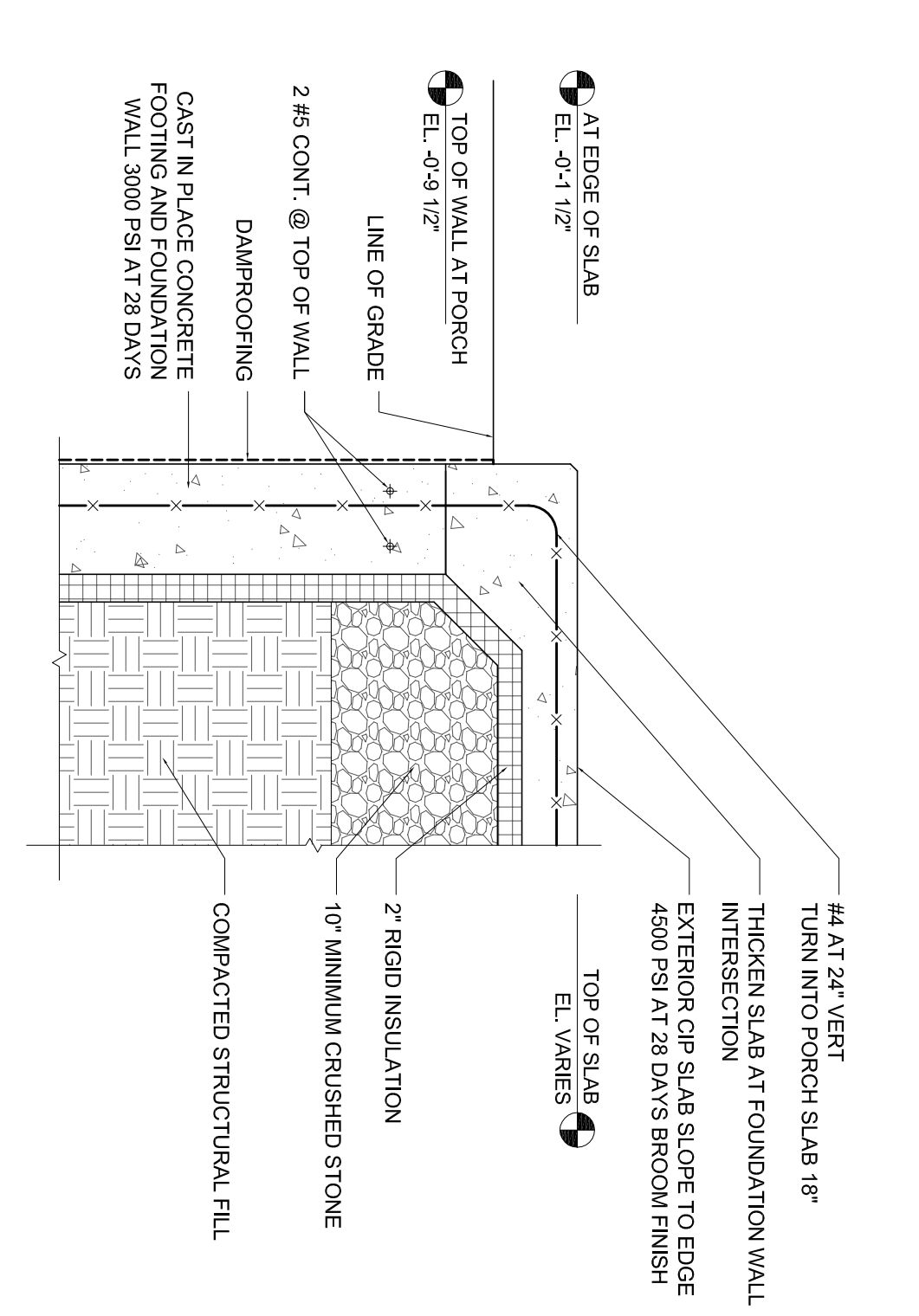


A Wall Section
1/4"=1'-0"

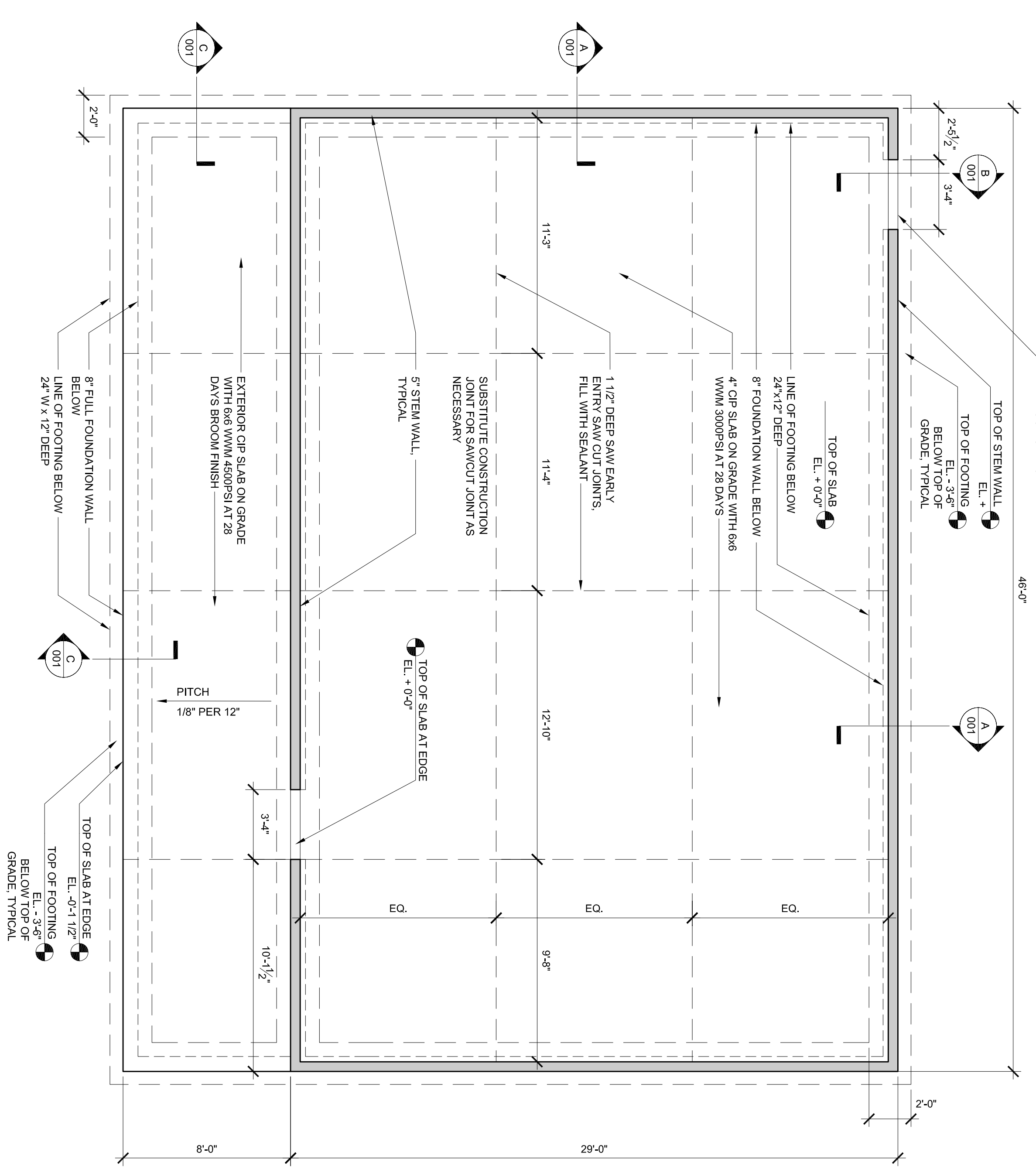


B TOW Detail at Door Threshold
1/4"=1'-0"

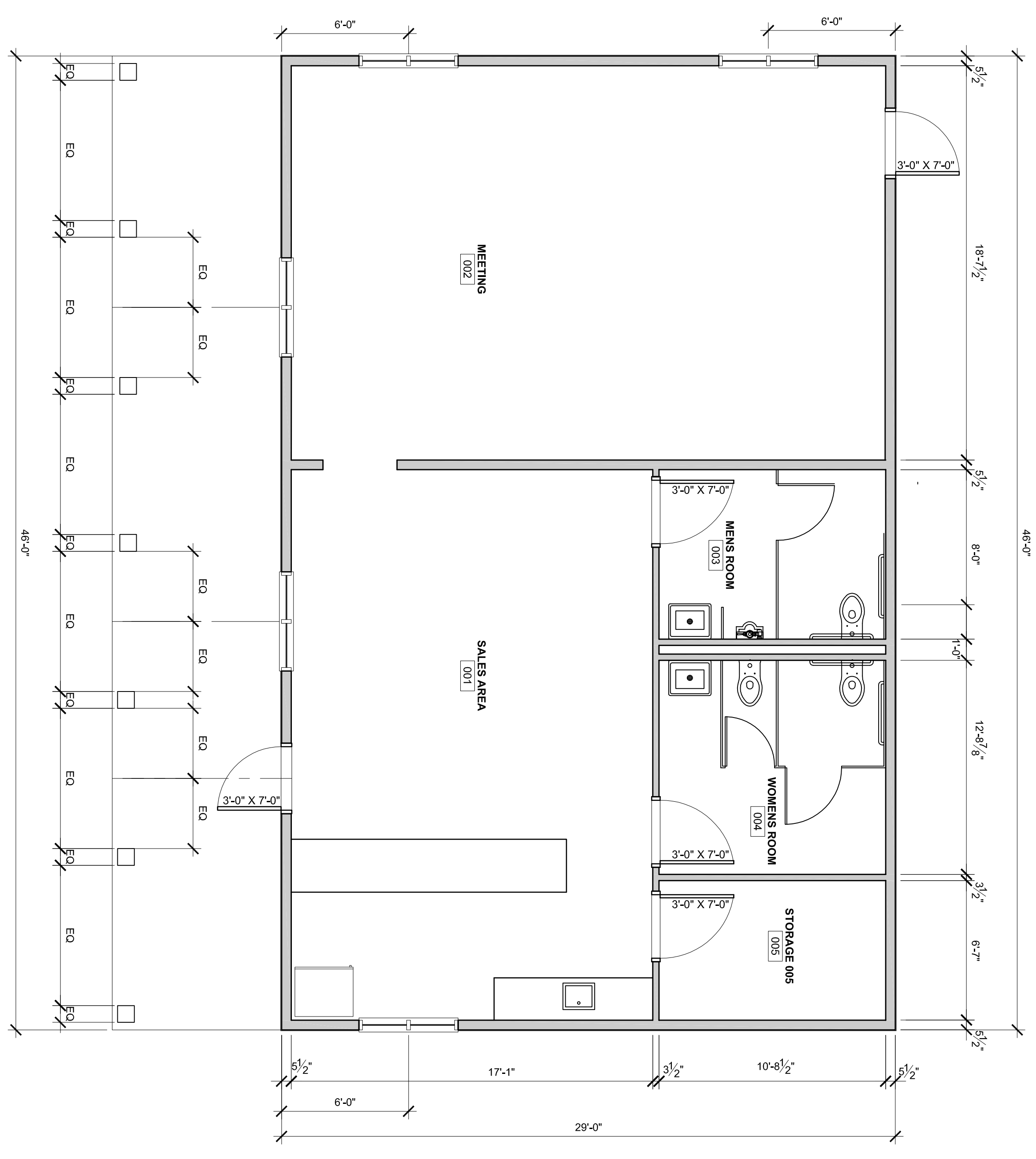


C Porch Edge Detail
1/4"=1'-0"

- GENERAL FOUNDATION NOTES:
1. ALL FOOTINGS TO BEAR ON UNDISTURBED NATIVE SOIL. ADJUST ELEVATION ACCORDINGLY.
 2. CONCRETE SLAB TO CONFORM TO IRC 2009, SECTION 1905.
 3. CONCRETE PILING SHALL BE MADE BY OTHERS. PROVIDE COORDINATE PILING VISIT DRAWINGS.
 4. SEE DETAIL SECTIONS FOR INSULATION, REINFORCING, VAPOR BARRIERS, ANCHOR BOLTS, ETC.



1 Foundation Plan
1/4"=1'-0"

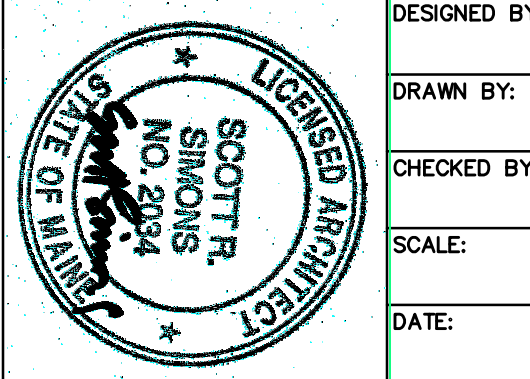


2 Plan
1/4"=1'-0"

LDD PROJECT NAME:
N/A
DRAWING NAME:
FIELD BOOK USED:
N/A

Scott Simons Architects
75 York Street, Portland, Maine 04101
www.simonsarchitects.com
207.772.4656

DESIGNED BY:
DRAWN BY:
CHECKED BY:
SCALE:
DATE:



RIVERSIDE SOUTH
GOLF COURSE PRO SHOP

CITY OF PORTLAND, MAINE
RECREATION AND FACILITIES
MANAGEMENT DEPARTMENT



SHEET #
001
PLAN NUMBER

FOR FOUNDATION PERMITTING
MARCH 29, 2013