

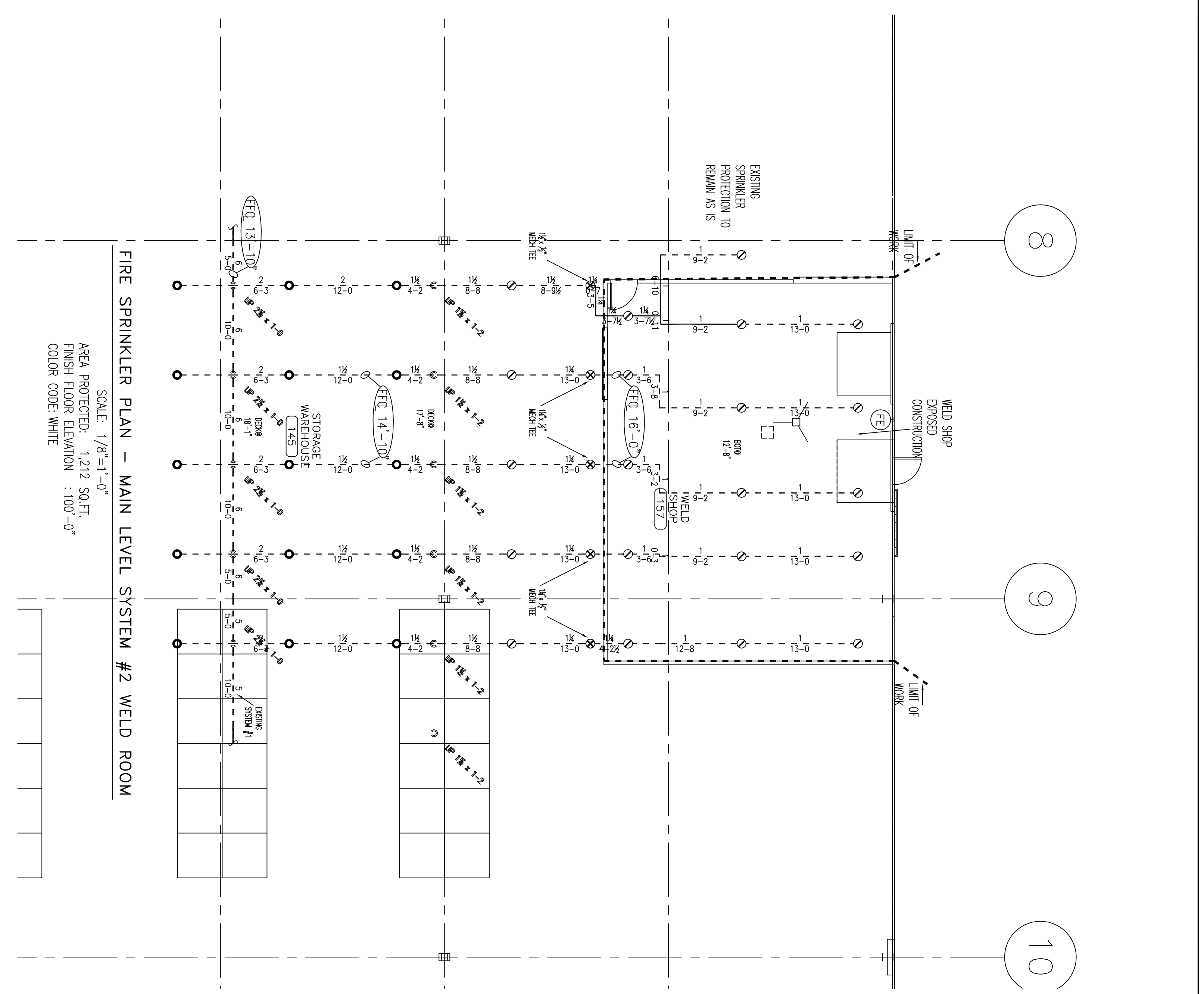
NOTE: AREA PROTECTED AND HEAD COUNT FOR SYSTEM #2 SECOND FLOOR ONLY TO LIMIT OF WORK LINE

Symbol	Count	Thread	K-Factor	Description	Note
⊙	29	1/2"	5.6	NEW 200" TPO T-8 BRASS PENDENT 200" SIM #17323	on Drop
○	75	3/4"	8.0	EXISTING T-8 BRASS UPRIGHTS	on Line

25 = Total Number of Heads this floor



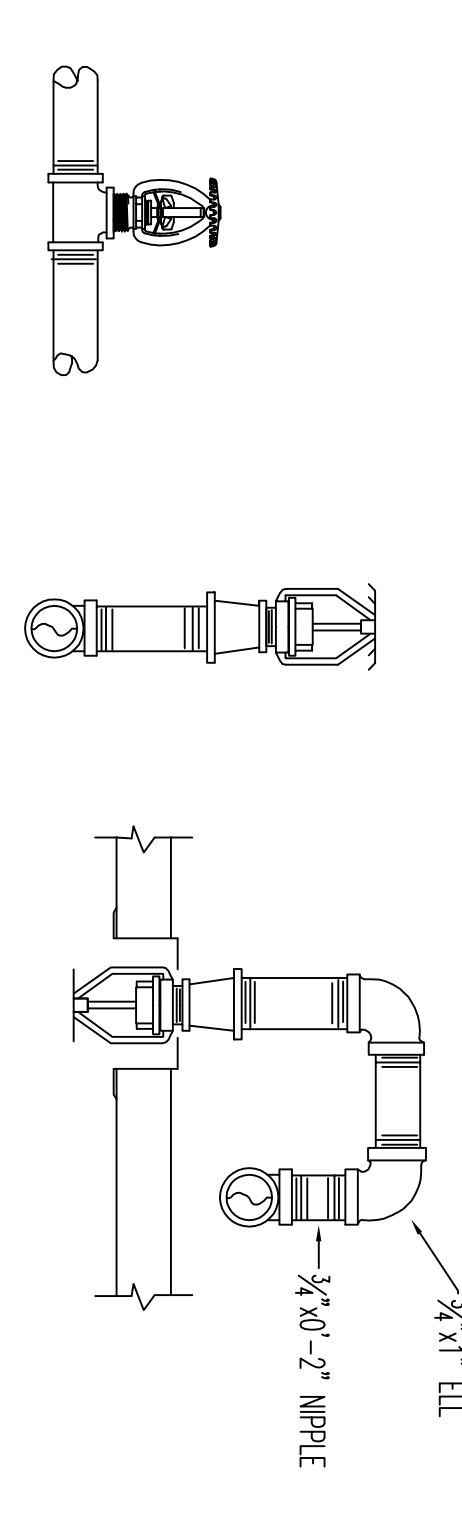
**HANGER DETAILS**  
 NOT TO SCALE  
 HANGER # 11  
 3/8" WIDE WOOD BEAM CLAMP TO ACCOMMODATE BUTLER GRW JOISTS  
 MACHINE THREAD ROD  
 ADJUSTABLE SWIVEL RING  
 HANGER # 11  
 3/8" WIDE WOOD BEAM CLAMP TO ACCOMMODATE BUTLER GRW JOISTS  
 MACHINE THREAD ROD  
 ADJUSTABLE SWIVEL RING  
 HANGER # 11  
 ALL HANGERS TO BE PROVIDED AND INSTALLED AS PER NFPA # 13  
 3/8" ROD FOR 1" TO 4" PIPE



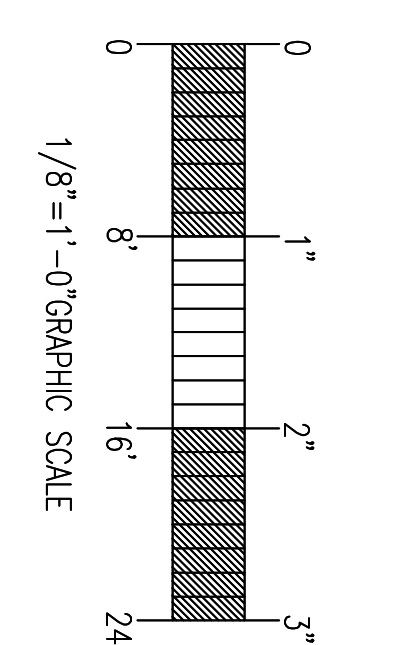
NOTE: AREA PROTECTED AND HEAD COUNT FOR SYSTEM #1 FIRST FLOOR WELD ROOM ONLY TO LIMIT OF WORK LINE

Symbol	Count	Thread	K-Factor	Description	Note
⊙	5	1/2"	5.6	NEW 200" TPO T-8 BRASS UPRIGHT SIM #17315	on Drop
○	21	1/2"	5.6	EXISTING BRASS UPRIGHT	on Line
○	15	1/2"	5.6	EXISTING BRASS UPRIGHT	on Sprig

41 = Total Number of Heads this floor

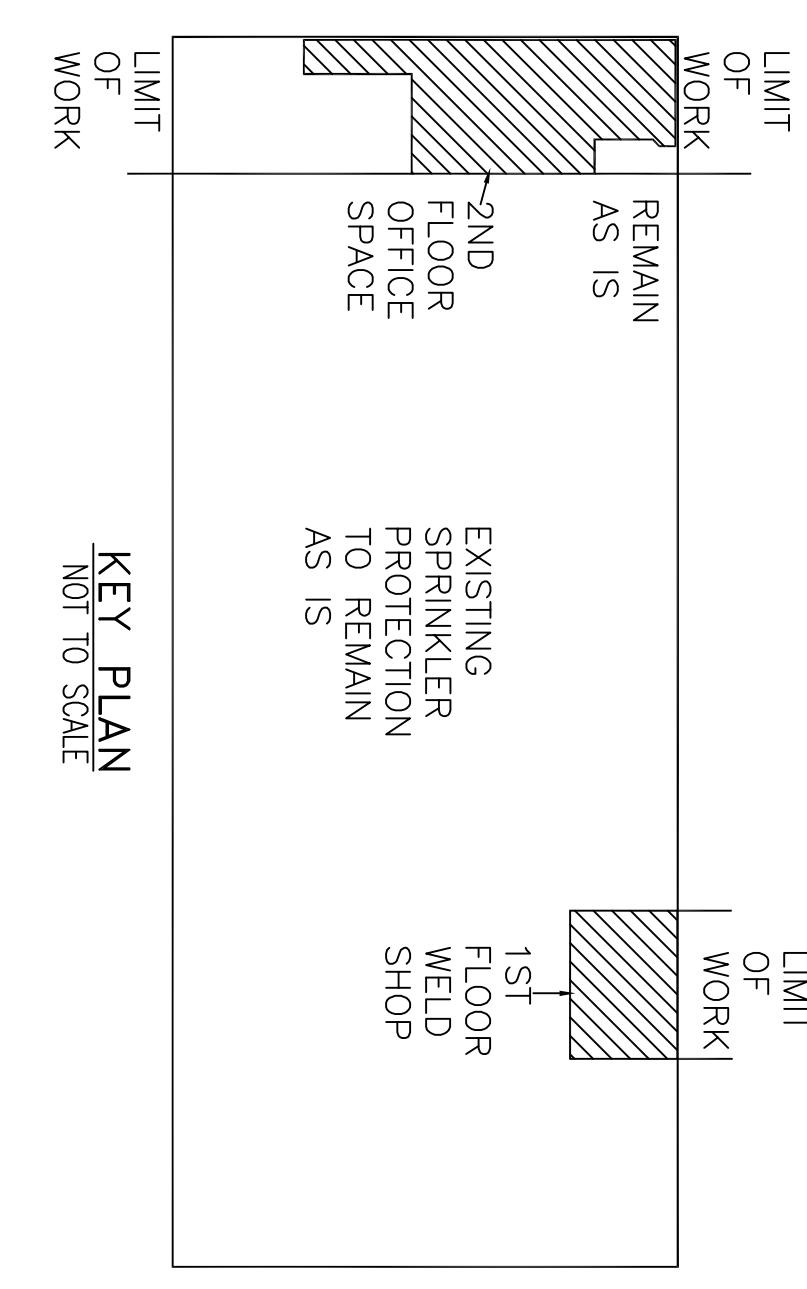


**SPRINKLER HEAD DETAILS**  
 NOT TO SCALE



**GENERAL NOTES**

- SCOPE OF WORK: RENOVATE EXISTING WET SPRINKLER SYSTEM TO ACCOMMODATE 2ND SYSTEM #1, AND #2 TO REMAIN AS IS.
- ALL WIRING TO BE DONE BY OTHERS
- ALTHOUGH NOT SPECIFIED, SOME SPRINKLER HEADS HAVE BEEN SHOWN @ CENTERLINE OF TILE. ACTUAL ORIENTATION OF HEADS WITH RESPECT TO CEILING COMPONENTS WILL VARY ACCORDING TO FIELD CONDITIONS.
- SPRINKLER SYSTEM INSTALLATION TO COMPLY WITH NFPA PAMPHLET # 13 (2007)
- ALL DIMENSIONS ARE SHOWN FOR GENERAL LOCATION OF SPRINKLER HEADS. PIPING MAY VARY TO SUIT ACTUAL FIELD CONDITIONS.
- ACOUSTICAL CEILING TILE (ACT) TO BE LISTED NON-COMBUSTIBLE WITH UL FLAME SPREAD OF LESS THAN 25.
- STORAGE OF MATERIALS SHALL NOT EXCEED 8'-0" IN HEIGHT.
- OCCUPANCY DESCRIPTION AND CLASSIFICATION: SECOND FLOOR OF OFFICE AREA, LIGHT HAZARD FIRST FLOOR WELDING SHOP, ORDINARY GROUP II
- F.F. ( ) INDICATES FINISH FLOOR UP TO CENTERLINE OF PIPE.
- D ( ) INDICATES DECK DOWN TO CENTERLINE OF PIPE.
- INDICATES EXISTING SPRINKLER PIPE
- INDICATES NEW SPRINKLER PIPE



**KEY PLAN**  
 NOT TO SCALE

GENERAL NOTES	DATE	REVISIONS	REQUIRED APPROVALS
SPRINKLER SYSTEM RENOVATION TO COMPLY WITH NFPA PAMPHLET # 13(2007)			OWNER / ARCHITECT STATE FIRE MARSHAL PORTLAND FIRE DEPARTMENT
NEW BRANCH LINE PIPING TO BE BLACK SCHEDULE 40 JOINED BY THREADED DUCTILE IRON FITTINGS			DRAWN BY: D.C. GERT#
NEW MAIN PIPING TO BE SCHEDULE #10 BLACK WITH GROOVED ENDS & WELDED JOINTS JOINED BY MECHANICAL COUPLINGS			CHECKED BY: WAE GERT# 093514
OWNER TO PROVIDE SUFFICIENT HEAT THROUGHOUT BUILDING TO PREVENT FREEZING OF WATER FILLED SPRINKLER PIPING AND EQUIPMENT. (MIN 40° F)			CONTRACTOR LICENSE # 101
			CONTRACTOR INS # 368
<b>NORTHERN UTILITIES</b> <b>UNITIL SPRINKLER RENO.</b> 400 RIVERSIDE INDUSTRIAL PARKWAY PORTLAND, ME			
<b>EASTERN FIRE PROTECTION</b> CONTRACT WITH: ORIELLE ASSOCIATES AUBURN / LEWISTON INDUSTRIAL AIRPARK, AUBURN, MAINE 04210			
FIRE SPRINKLER PLANS & DETAILS DWG. NO. 1 OF 1 JOB NUMBER: AU-5223-15 SCALE: AS NOTED DATE: 06/23/2015			