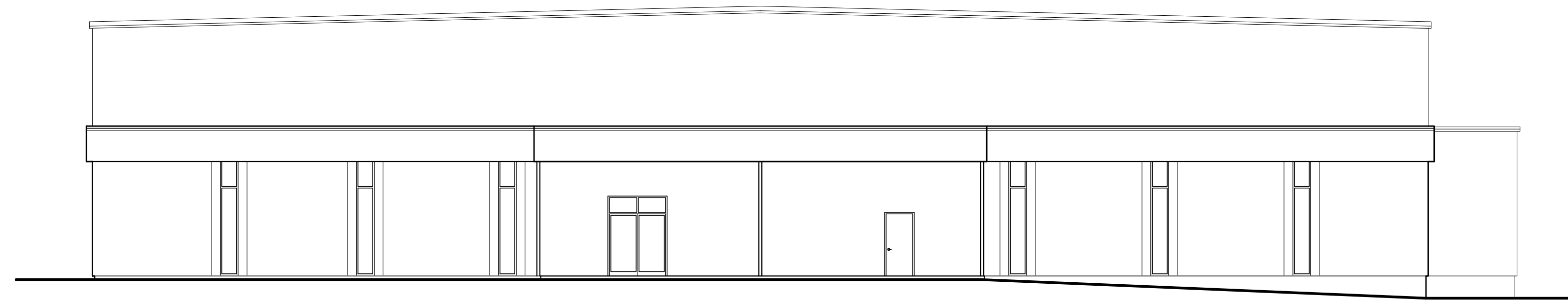


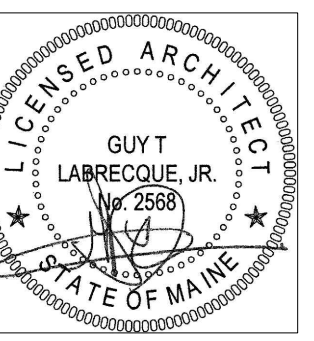
UNITIL GAS OPERATIONS TRAINING AND TESTING ROOM

376 RIVERSIDE INDUSTRIAL PARKWAY
PORTLAND, MAINE 04101



CWS ARCHITECTS
ARCHITECTURE | INTERIOR DESIGN

264 US Route One Box 6, Suite 100-2A
Scarborough ME 04074
OFFICE: 207.774.4441 CWSARCH.COM



DESIGNER

CWS ARCHITECTS
ARCHITECTURE | INTERIOR DESIGN
264 US ROUTE ONE
BOX 6, SUITE 100-2A
SCARBOROUGH, MAINE 04074
T: 207.774.4441
WWW.CWSARCH.COM

OWNER

UNITIL

6 LIBERTY LANE WEST
HAMPTON, NEW HAMPSHIRE 03842

PROJECT

UNITIL GAS
OPERATIONS TRAINING
AND TESTING ROOM

376 RIVERSIDE INDUSTRIAL PARKWAY
PORTLAND, MAINE 04101

DRAWING

COVER PAGE

CWS PROJECT NUMBER: 17027

REVISIONS

BUILDING OWNER:



UNITIL
6 LIBERTY LANE WEST
HAMPTON, NEW HAMPSHIRE 03842

ARCHITECT:



CWS ARCHITECTS
264 US ROUTE 1, BOX 6, SUITE 100-2A
SCARBOROUGH, MAINE 04074

CONSTRUCTION MANAGER:



OUELLET CONSTRUCTION
56 BIBBER PARKWAY
BRUNSWICK, MAINE 04011

STRUCTURAL ENGINEER:

XXXXXXXXXXXXXXXX
XXXXXXXXXXXXXXXX
XXXXXXXXXXXXXXXX

CIVIL ENGINEER/LANDSCAPE
ARCHITECT:

XXXXXXXXXXXXXXXX
XXXXXXXXXXXXXXXX
XXXXXXXXXXXXXXXX

MECHANICAL/PLUMBING
ENGINEER:



TITAN MECHANICAL, INC.
232 RIVERSIDE INDUSTRIAL PARKWAY
PORTLAND, ME 04103

ELECTRICAL ENGINEER:

MILLIKEN BROTHERS, INC.
474 RIVERSIDE INDUSTRIAL PARKWAY #1
PORTLAND, ME 04103

DRAWING NUMBER

CP

SCALE: N.T.S.
DATE: 08/14/2017

ISSUED FOR CONSTRUCTION